

# Mobile Coverage Programme Discussion Paper

## Submission Cover Sheet

### Submission Information

This cover sheet should be attached to submissions made to the Department of Communications in relation to the Mobile Coverage Programme Discussion Paper.

#### Contact Details

<b>Name of respondent:</b>	Hon. John Cobb MP
<b>Name of organisation:</b>	Federal Member - CALARE
<b>Phone:</b>	02 6361 7138
<b>Email:</b>	john.cobb.mp@aph.gov.au
<b>Website (if applicable):</b>	www.johncobb.com.au
<b>Date:</b>	28/02/14

#### Confidentiality and privacy

All submissions and comments, or parts thereof, will be treated as non-confidential information unless specifically requested, and acceptable reasons should accompany each request. Email disclaimers will not be considered sufficient confidentiality requests.

Respondents lodging a submission should be aware that submissions (excluding any information agreed to be treated as confidential information) will be made publicly available, including on the Department of Communications' website. Submissions and comments will be subject to freedom of information provisions. Despite a submission being identified as confidential or sensitive, submissions may be disclosed where authorised or required by law, or for the purpose of parliamentary processes.

Do you want all or parts of the submission to be treated as confidential? **Yes**  **No**

*If yes, identify below which parts of the submission are to be treated as confidential (and provide a reason):*

If the submission contains personal information of any third party individual, indicate on this Submission Cover Sheet if that third party individual has not consented to the publication of his or her personal information:

#### Submission Instructions

Submissions are to be made by **5:00pm (AEST) Friday 28 February 2014**.

Where possible, submissions should be lodged electronically, preferably in Microsoft Word or other text-based formats via the email address [mobilecoverage@communications.gov.au](mailto:mobilecoverage@communications.gov.au)

Alternatively, submissions can be sent to the postal address below (to arrive by the due date):

The Manager  
Mobile Coverage Programme  
Department of Communications  
GPO Box 2154  
CANBERRA ACT 2615

All submissions lodged will be acknowledged by the Department of Communications by email (or by letter if no email is provided). Respondents lodging a submission who do not receive acknowledgement of their submission should contact the Department. Submissions which are not acknowledged by the Department as being received may not be considered. Respondents should be aware that emails greater than 10Mb may not be successfully delivered.



28/02/14

## Mobile Coverage Programme – Discussion Paper

### Submission - The Hon. John Cobb MP

The electorate of Calare is serviced by Telstra, Optus and in a limited capacity Vodaphone. While I acknowledge that these providers enable a fair level of access to the electorate of Calare, there remain substantial areas that have extremely poor or black spot mobile reception.

Calare covers an area of approximately 30,526 sq km from Lithgow in the east to Tullamore in the west, Parkes Shire, Cabonne, Bathurst Regional and Lithgow City councils in the north to Forbes Shire, Blayney Shire and Oberon councils in the south. The main cities and towns include Bathurst, Blayney, Canowindra, Eugowra, Forbes, Lithgow, Molong, Oberon, Orange, Parkes, Peak Hill, Portland, Wallerawang and Yeoval.

The electorate is predominantly a region based on agriculture, manufacturing, food processing, mining, timber, tourism and energy production, all of which require access to adequate mobile reception and broadband capacity.

Calare consists of large distances and difficult terrain, and poor or black spot mobile coverage is predominantly hampered by the mountainous terrain in the eastern area of Calare and the large distances in the western area. However, there is still a significant shortfall in mobile reception access (and broadband access) in relatively populated areas.

Improved access to mobile services would certainly enable further business development, increase tourism opportunities and access to and operation of the emergency services.

This submission identifies locations that experience poor or black spot mobile reception and is based on direct constituent correspondence with my office. Whilst, I do not have access to the technical capacities currently provided by Telstra and Optus, I believe existing communications infrastructure needs to be reviewed and areas most 'in need' identified for future infrastructure improvements.

In addition to mobile coverage issues, I further add that this often directly corresponds with poor and limited broadband access. In my opinion, both issues must be examined in tandem and where possible the roll-out of the NBN and its subsequent infrastructure must be used where possible to overcome mobile coverage issues.

I am aware that terrain and distances make access to mobile reception difficult and realistically I don't expect that hand held mobile phones in black spot/poor reception locations will, in the near future, access excellent reception. However, I do expect that an adequate level of coverage can be provided through the use of an antenna, thus overcoming the existence of mobile black spots.

I have identified a number of locations where mobile reception is poor or non-existent and provided a series of maps from both Telstra (Data and Voice) and Optus as appendices.

**Please note;** when viewing the maps, the main towns listed, ie: Trundle/Oberon – while the towns generally have some level of coverage, though patchy, it is the outlying farms/rural properties that experience the lack of mobile reception. The range of reception beyond the towns appears to be quite limited, either hampered by terrain and/or distance.

Should you require any further details, please do not hesitate to contact my office: 02 6361 7138.

Kind regards,



### **Locations in Calare experiencing poor/black spot mobile reception**

#### **Lithgow LGA**

- Castlereagh HWY north of Cullen Bullen to Mudgee
- Capertee Valley
- Wolgan Valley
- Kanimbla Valley/Ganbenang
- Duckamaloi
- Hampton
- Hartley

#### **Oberon LGA**

- Burruga
- Black Springs
- Shooters' Hill
- Rockley
- Oberon
- O'Connell
- Trunkey
- Jenolan Caves/Jenolan

#### **Parkes LGA**

- Tullamore
- Trundle
- Bogan Gate

#### **Cabonne LGA**

- Obley

#### **Forbes LGA**

- Bedgerabong and Waroo

#### **Orange LGA**

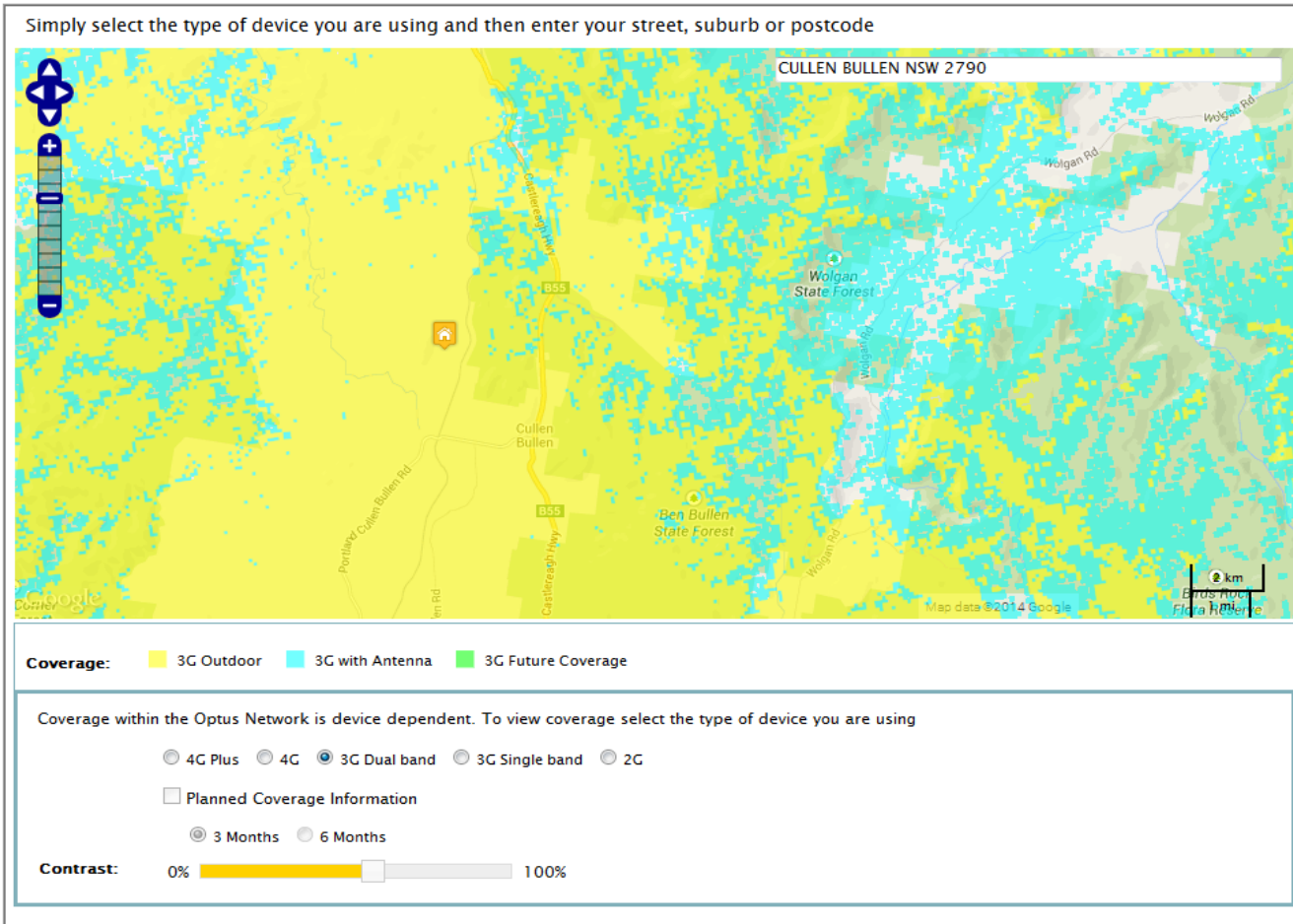
- Windera Estate

# Map of Calare Electorate

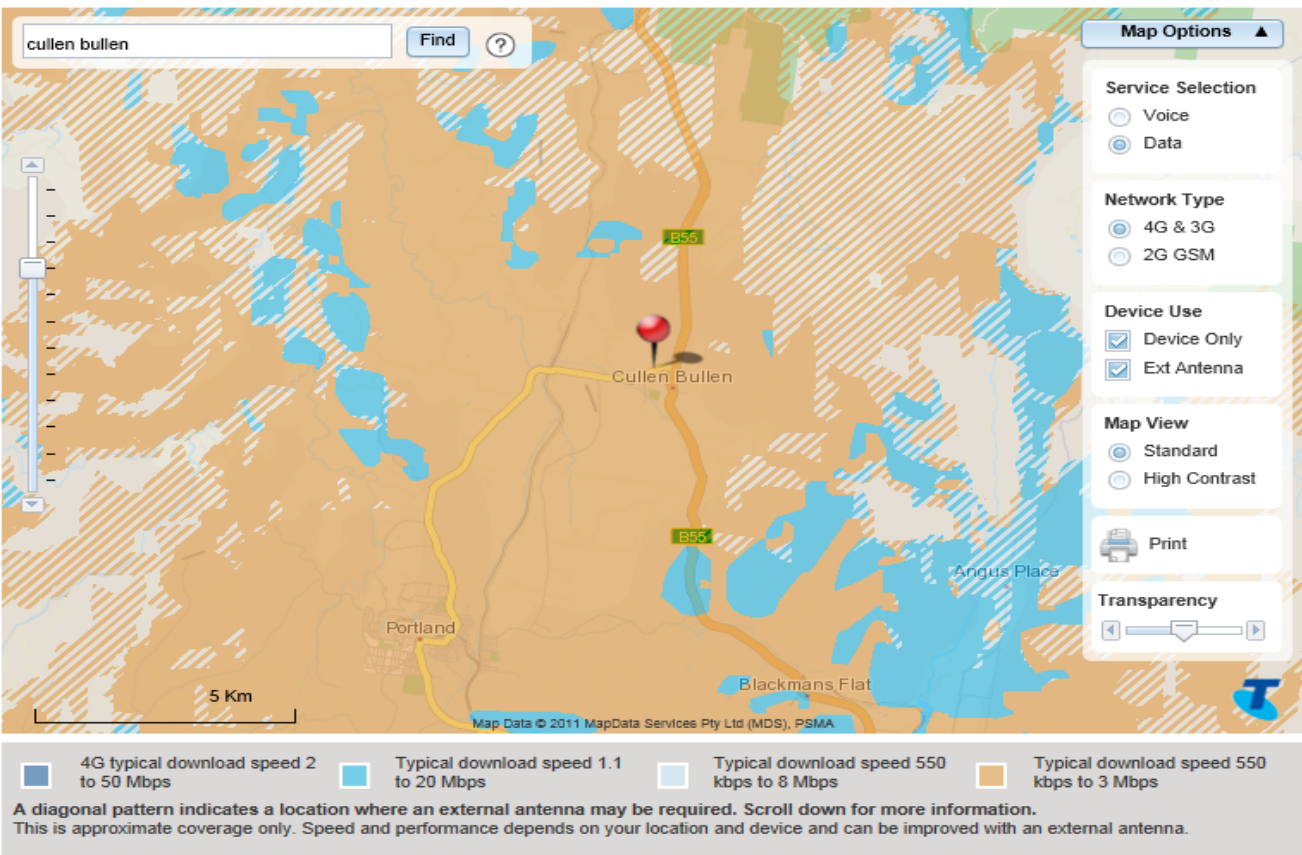


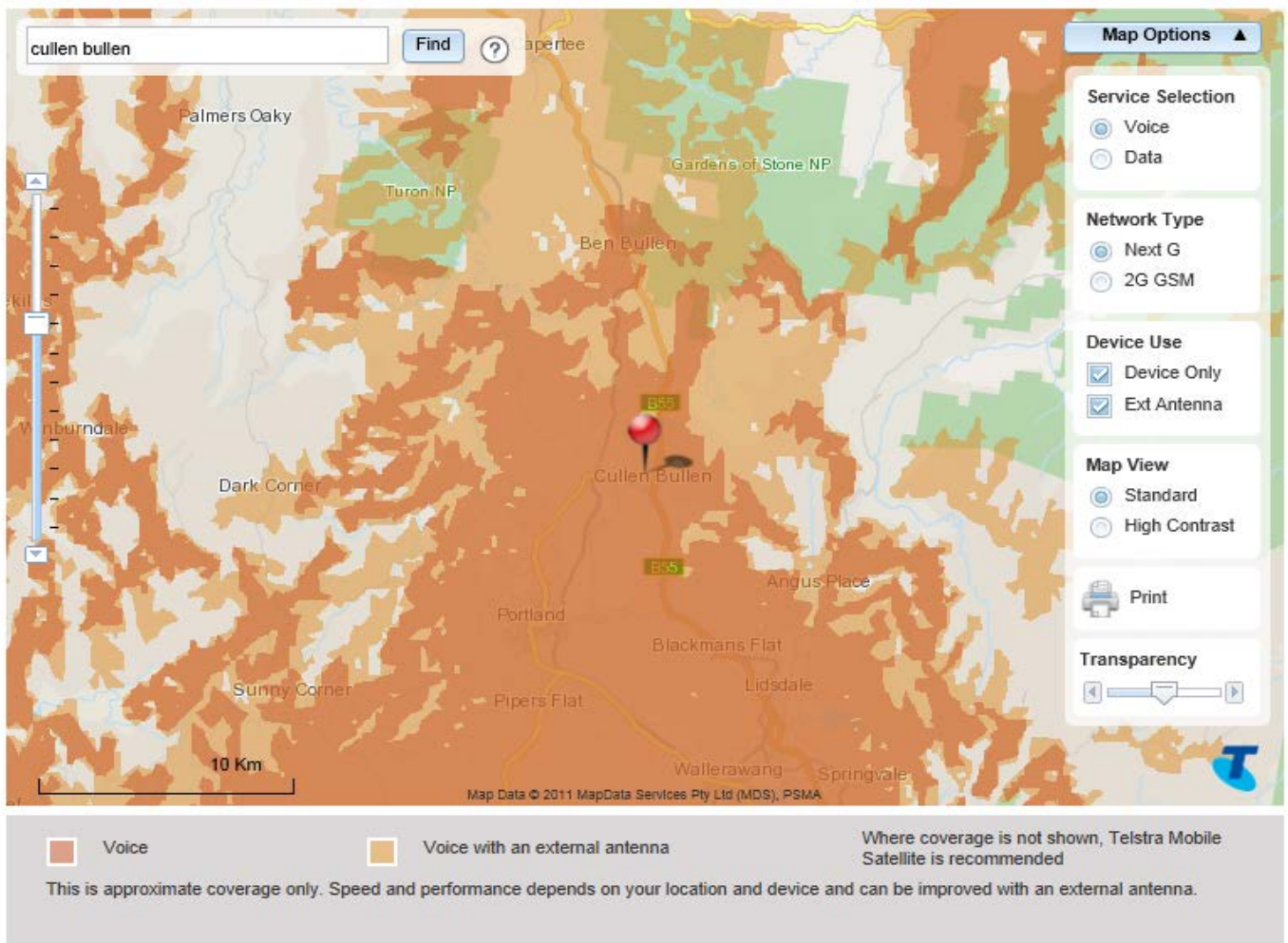
Castlereagh HWY north of Cullen Bullen to Mudgee

Optus



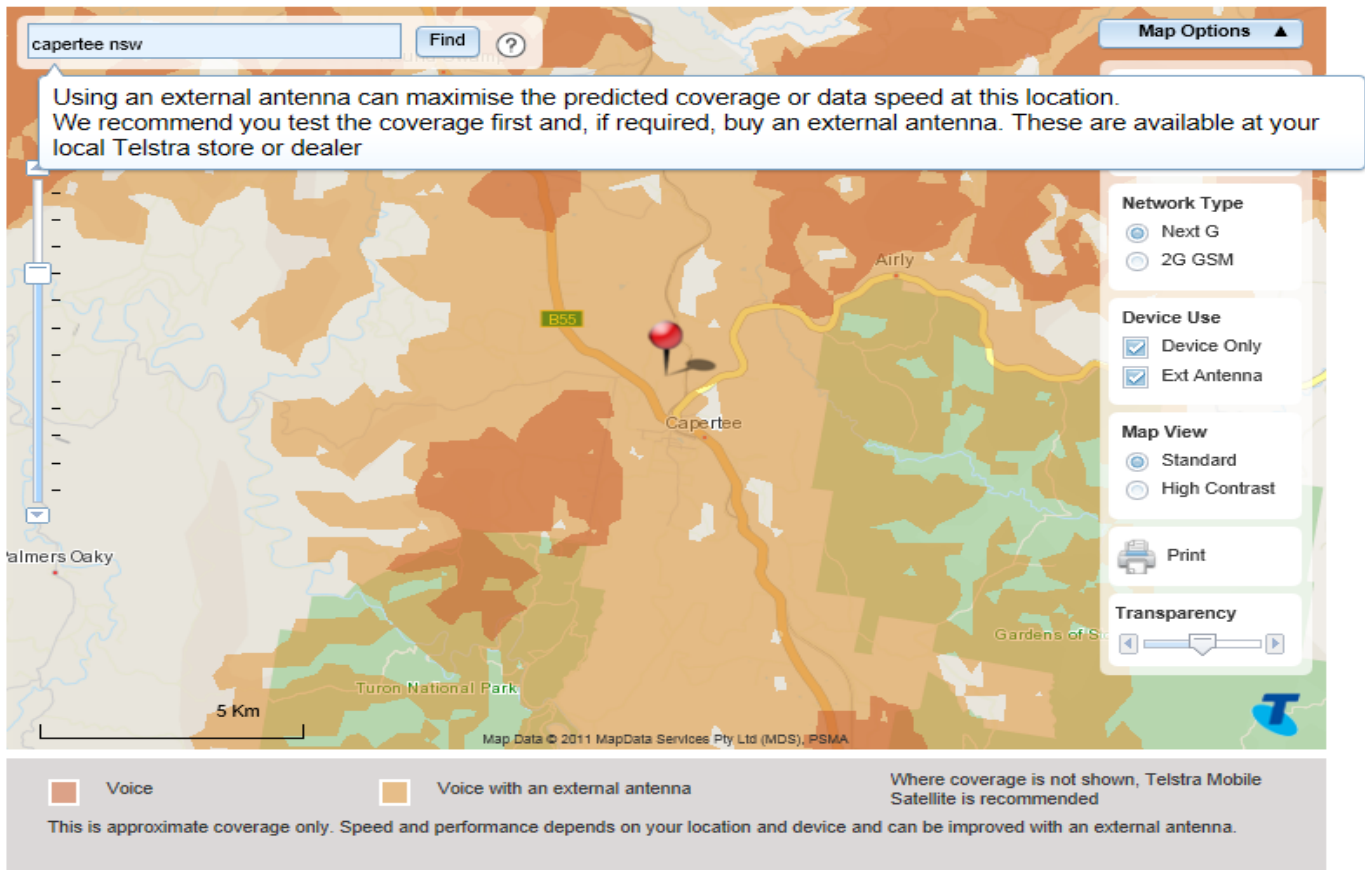
Telstra

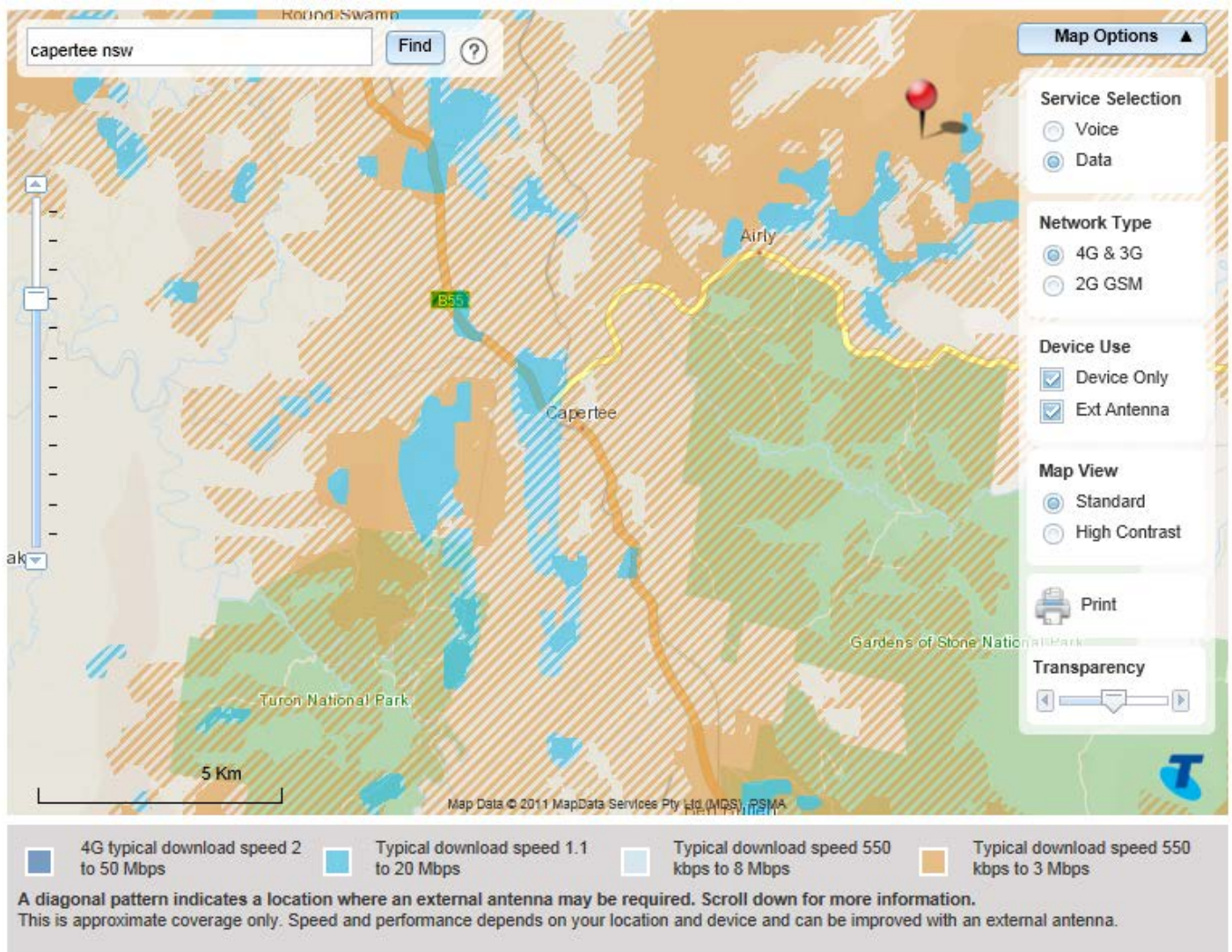




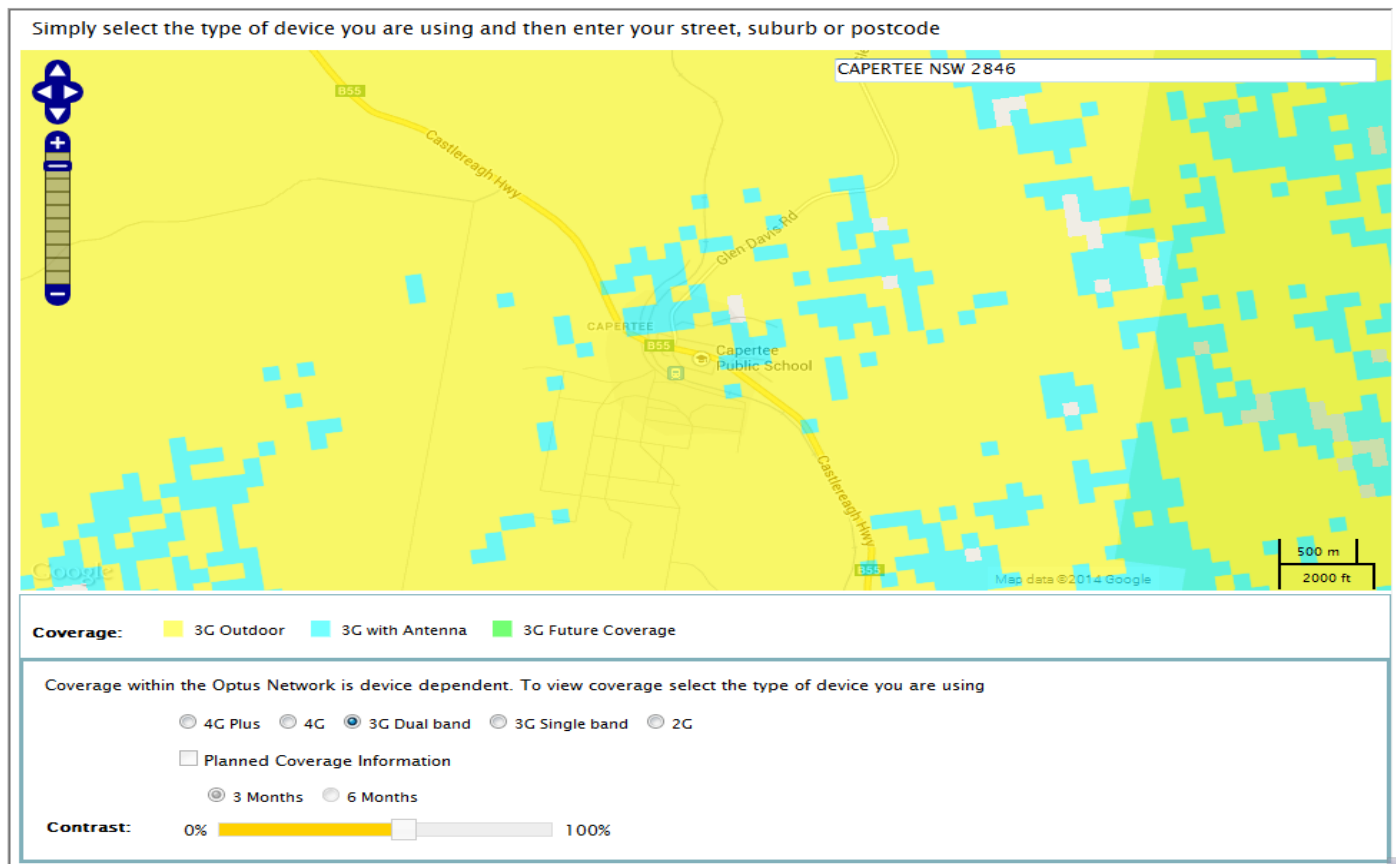
## Capertee Valley

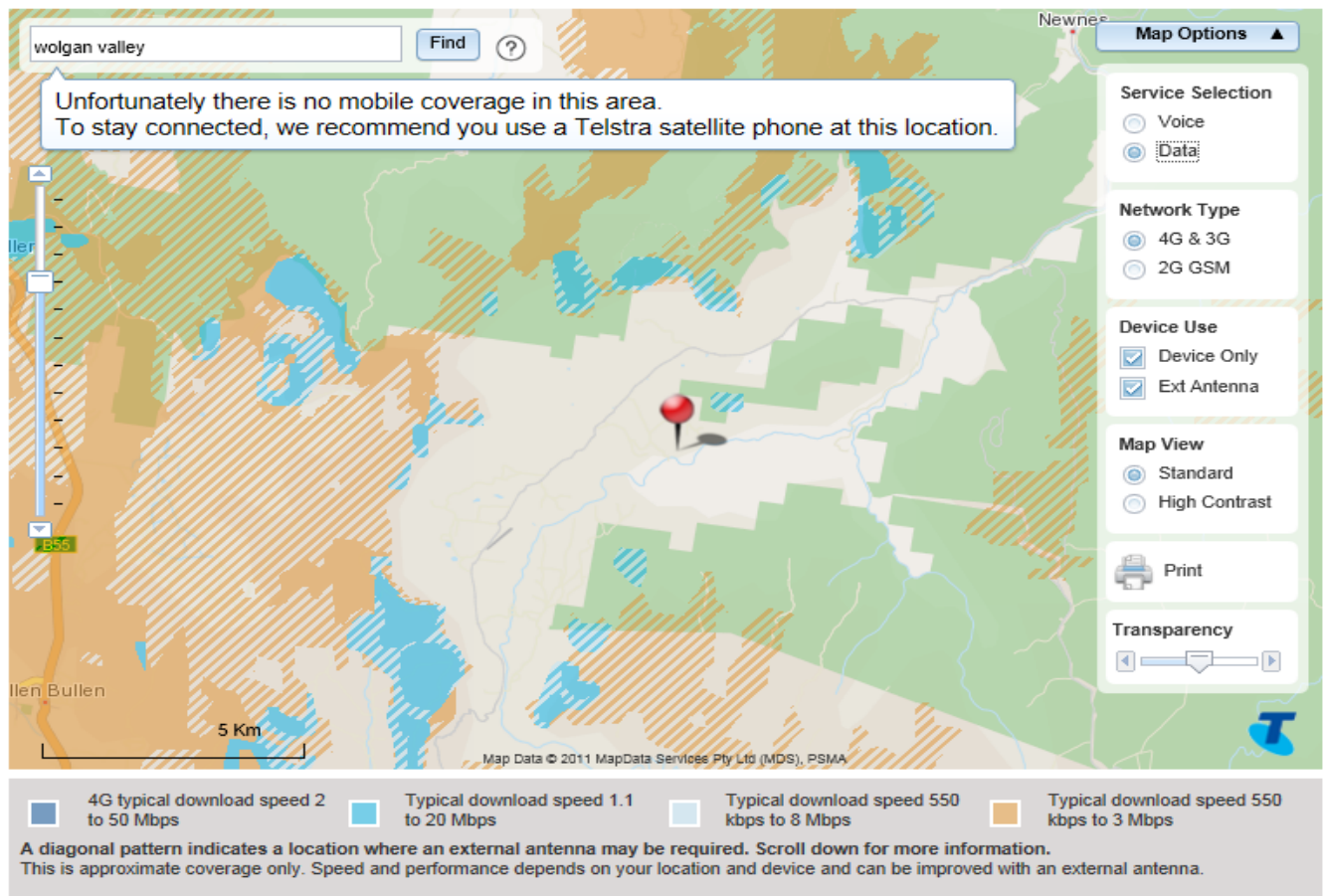
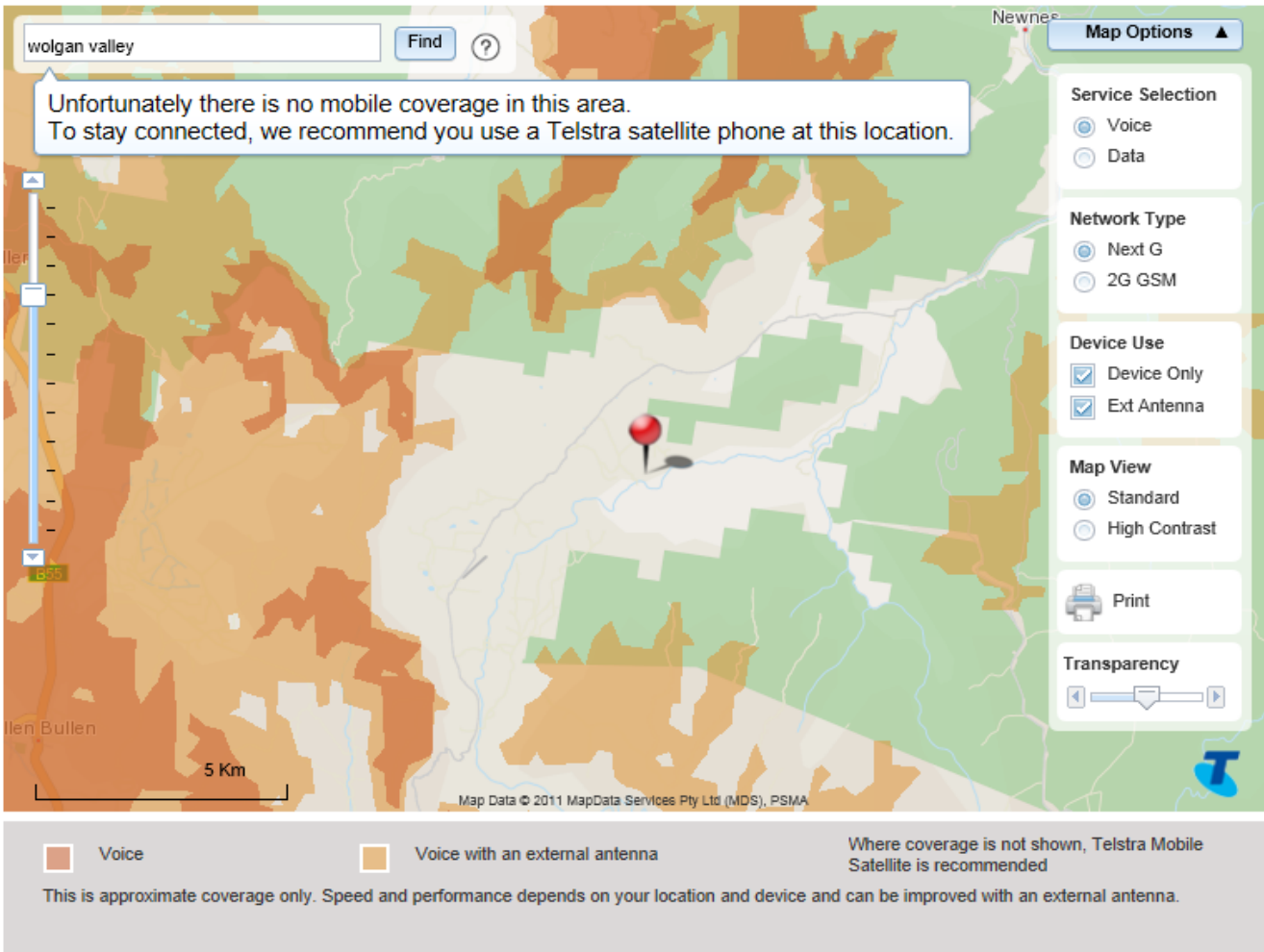
Telstra



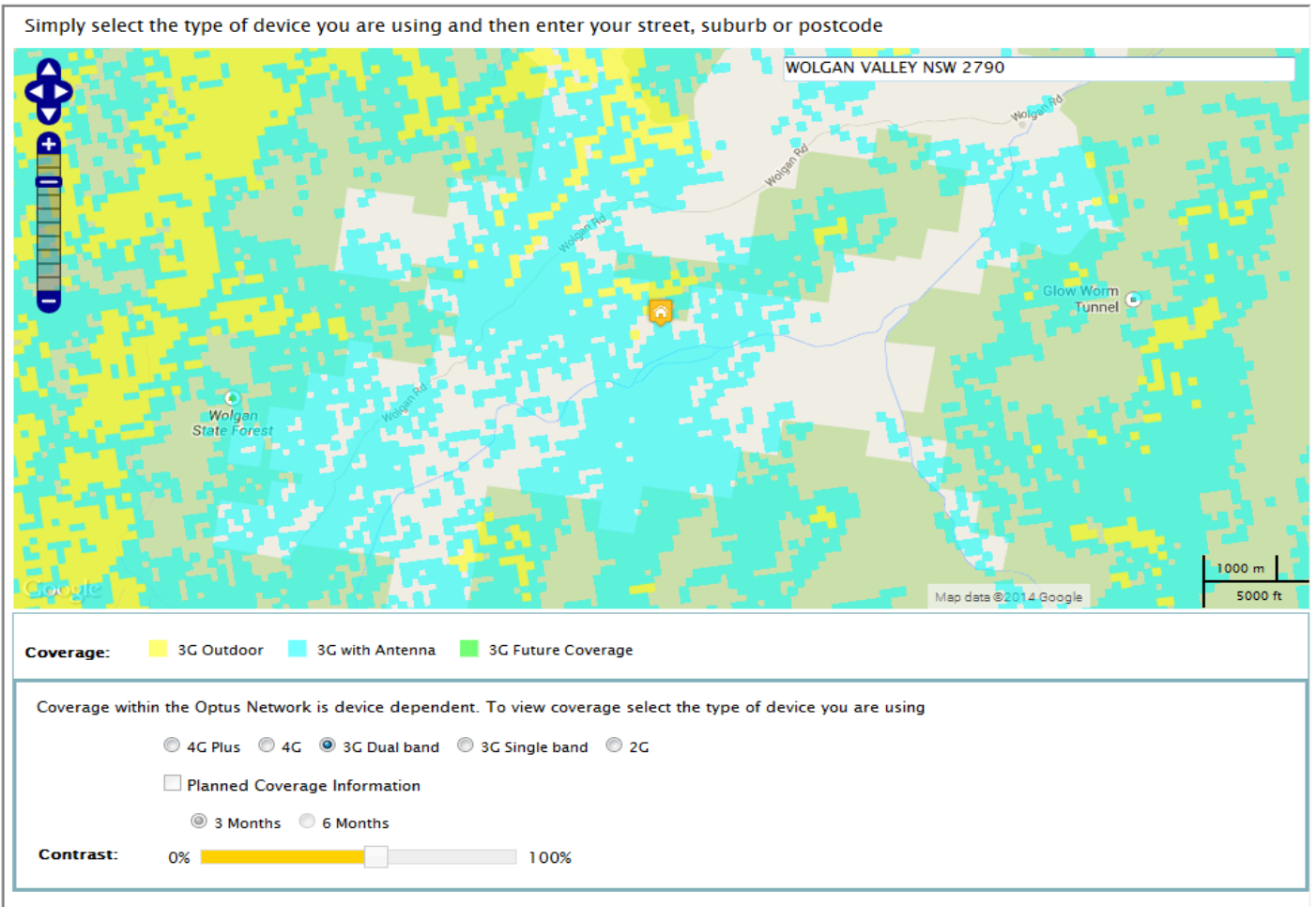


## Optus



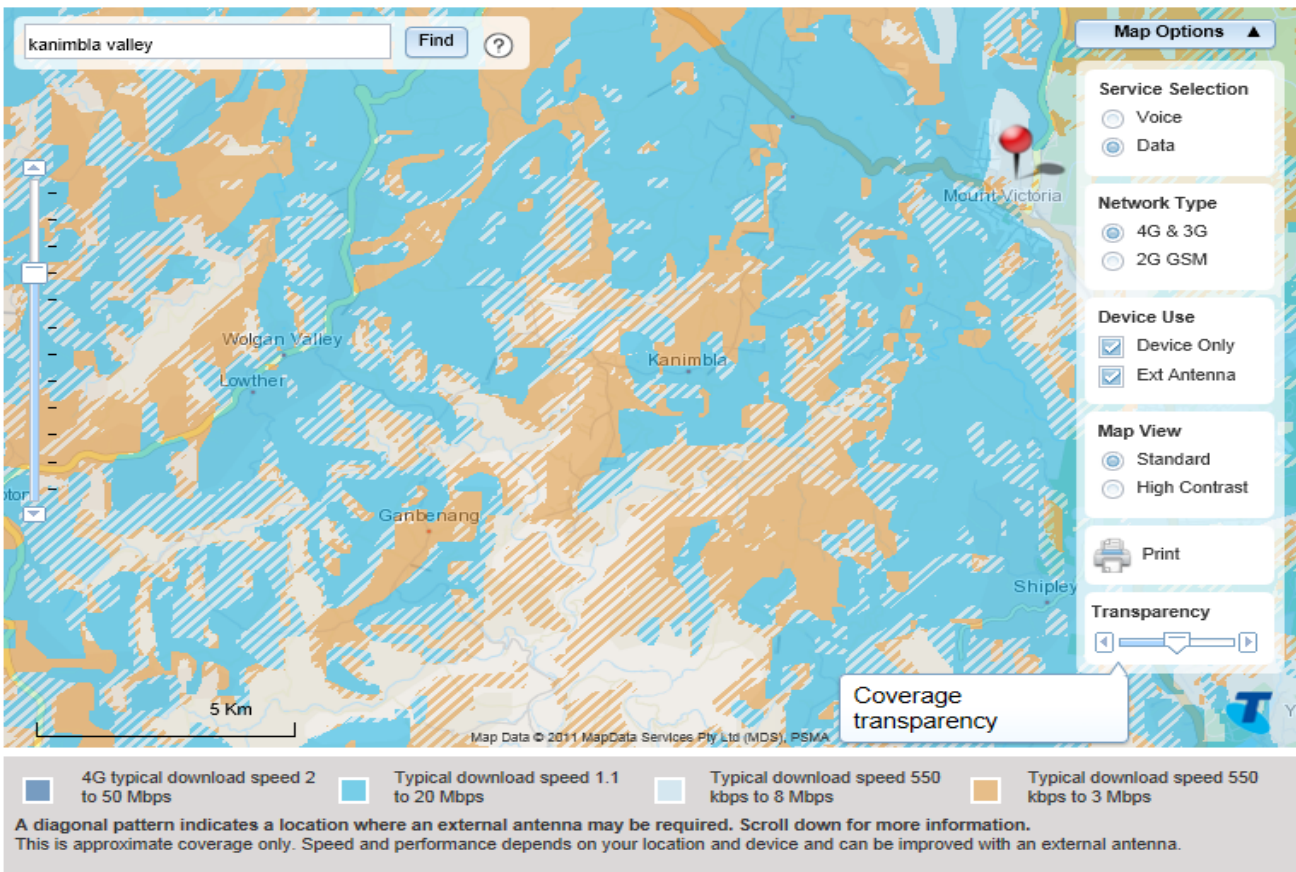


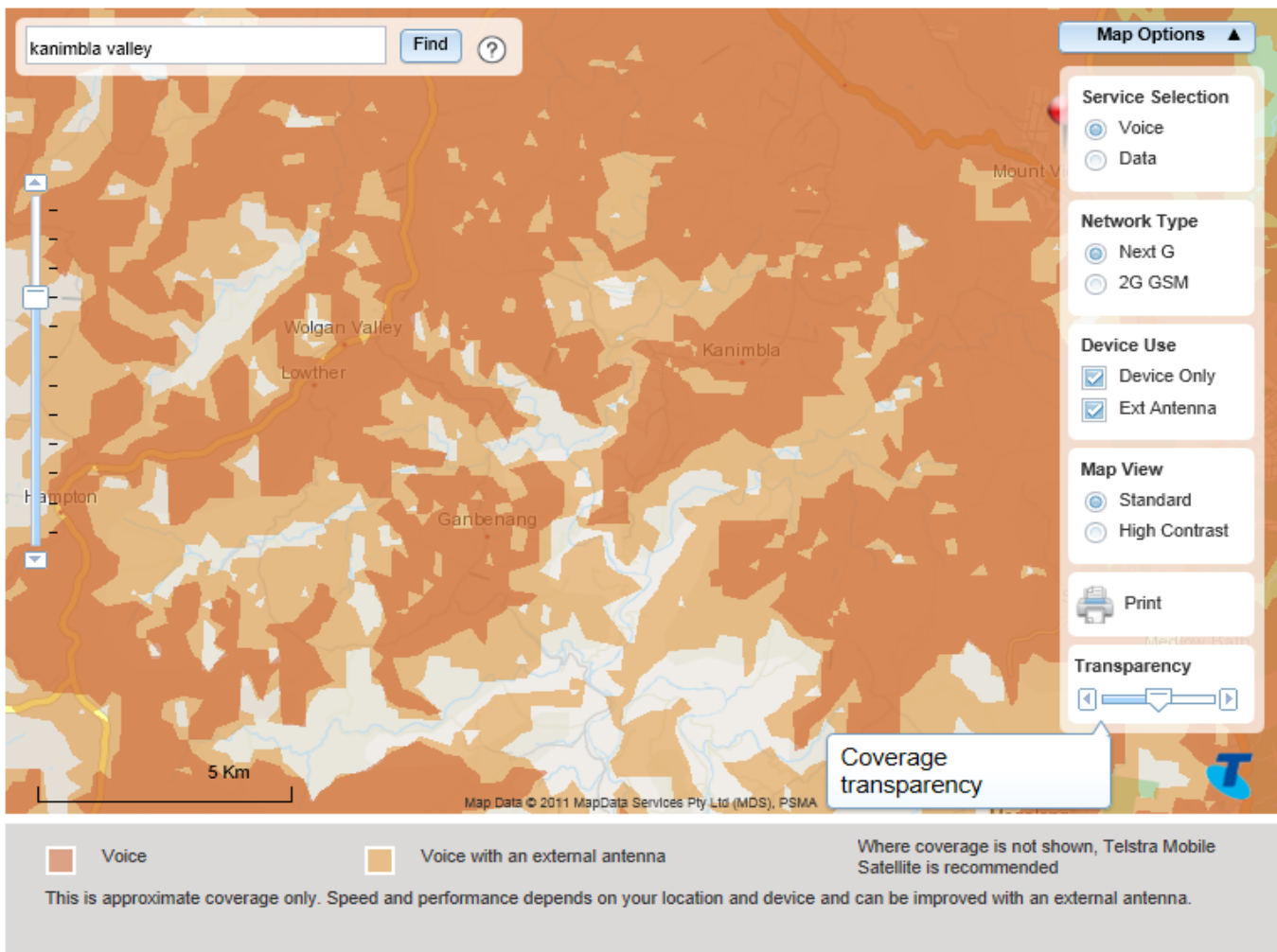




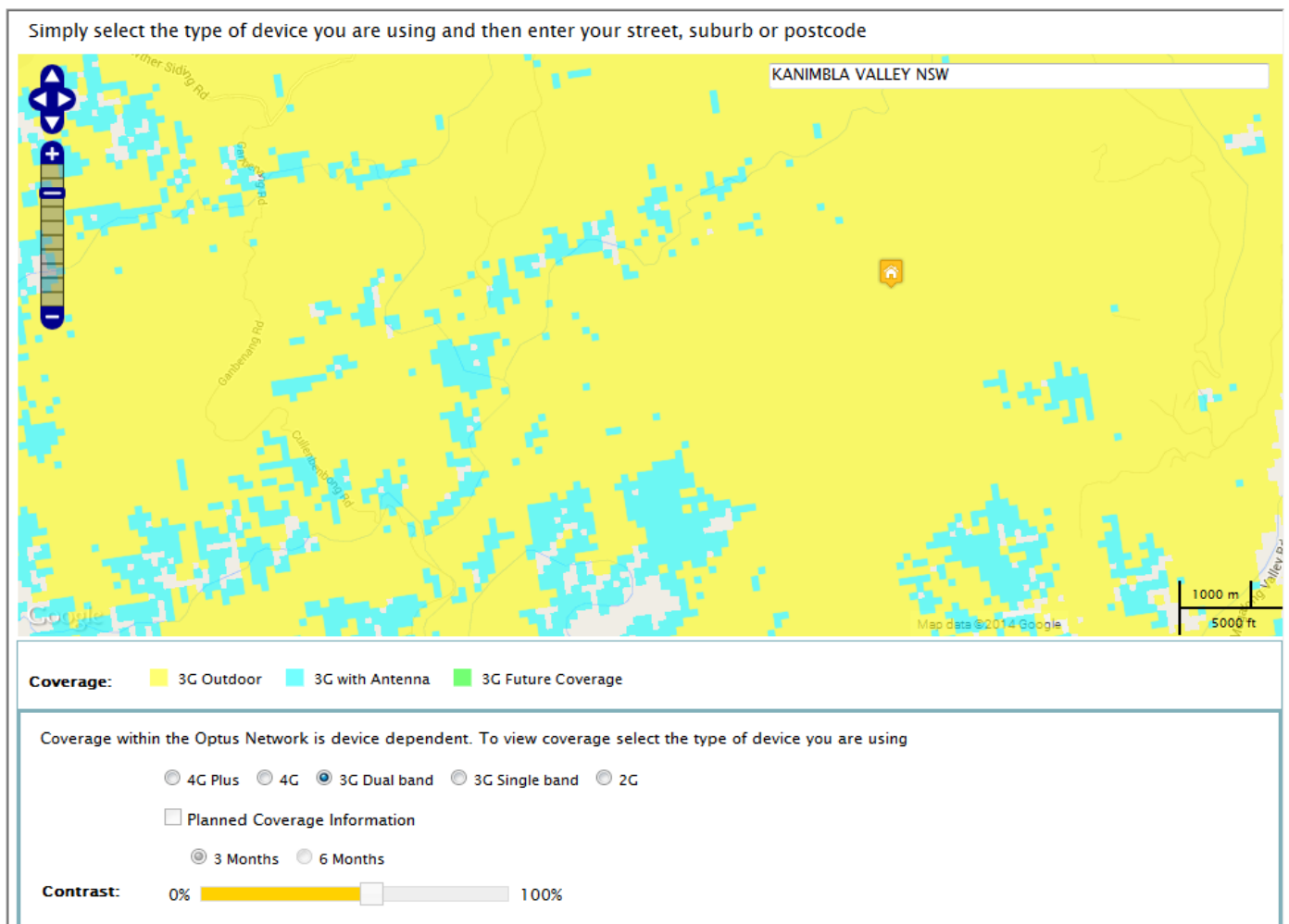
### Kanimbla Valley/Ganbenang

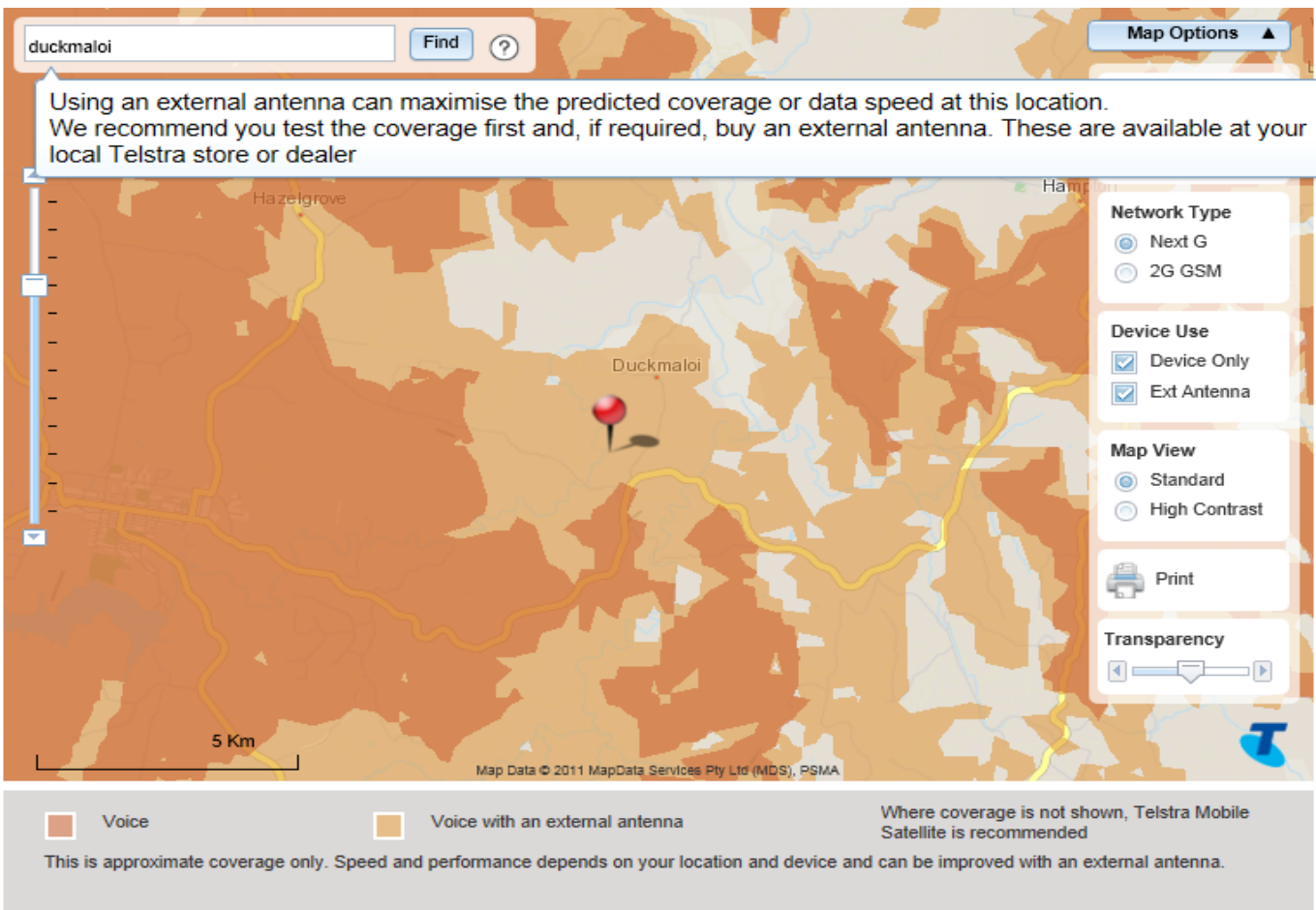
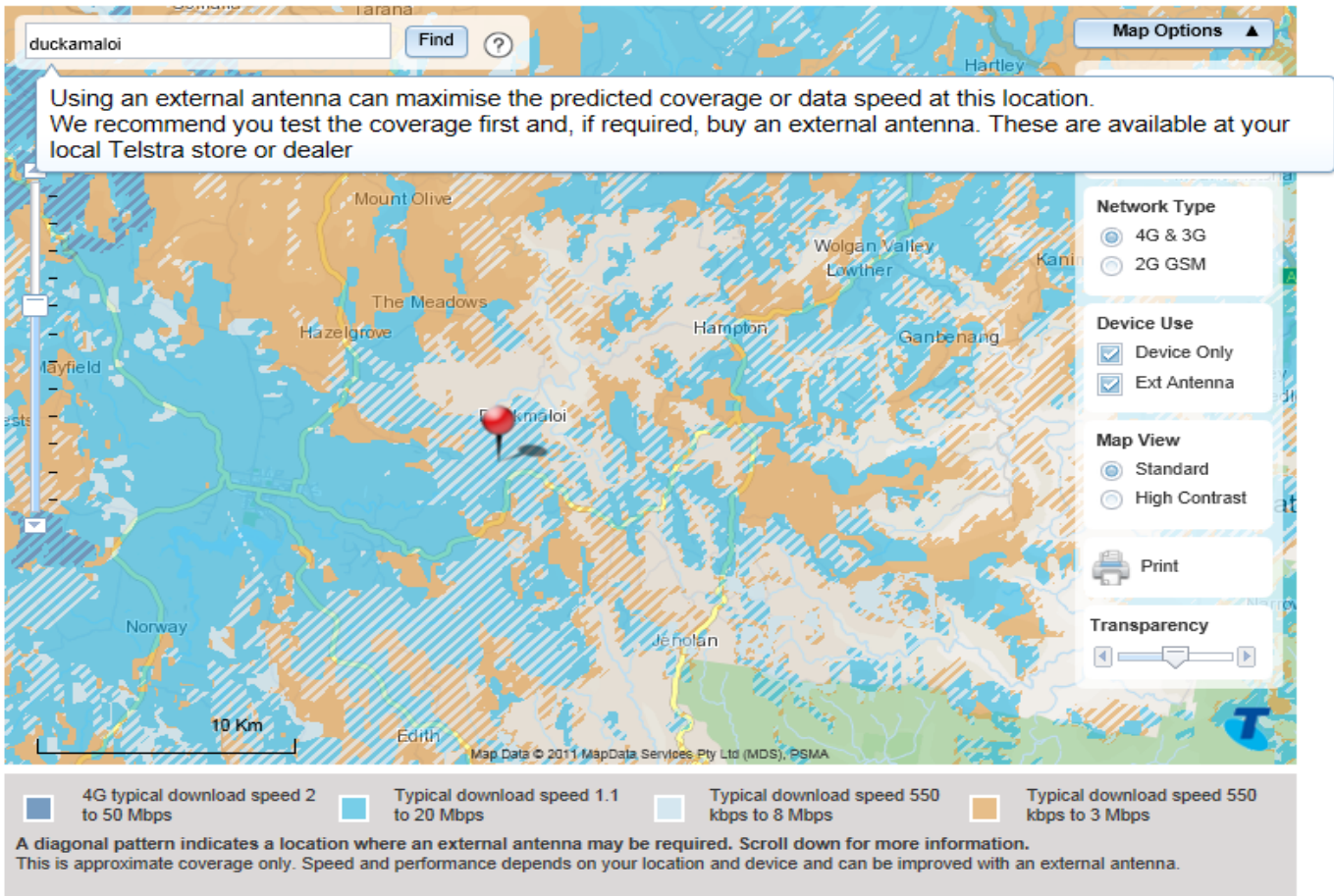
Telstra





## Optus





Simply select the type of device you are using and then enter your street, suburb or postcode

**Coverage:** ■ 3G Outdoor ■ 3G with Antenna ■ 3G Future Coverage

Coverage within the Optus Network is device dependent. To view coverage select the type of device you are using

4G Plus  4G  3G Dual band  3G Single band  2G  
 Planned Coverage Information  
 3 Months  6 Months

**Contrast:** 0%  100%

**Hampton**

Optus

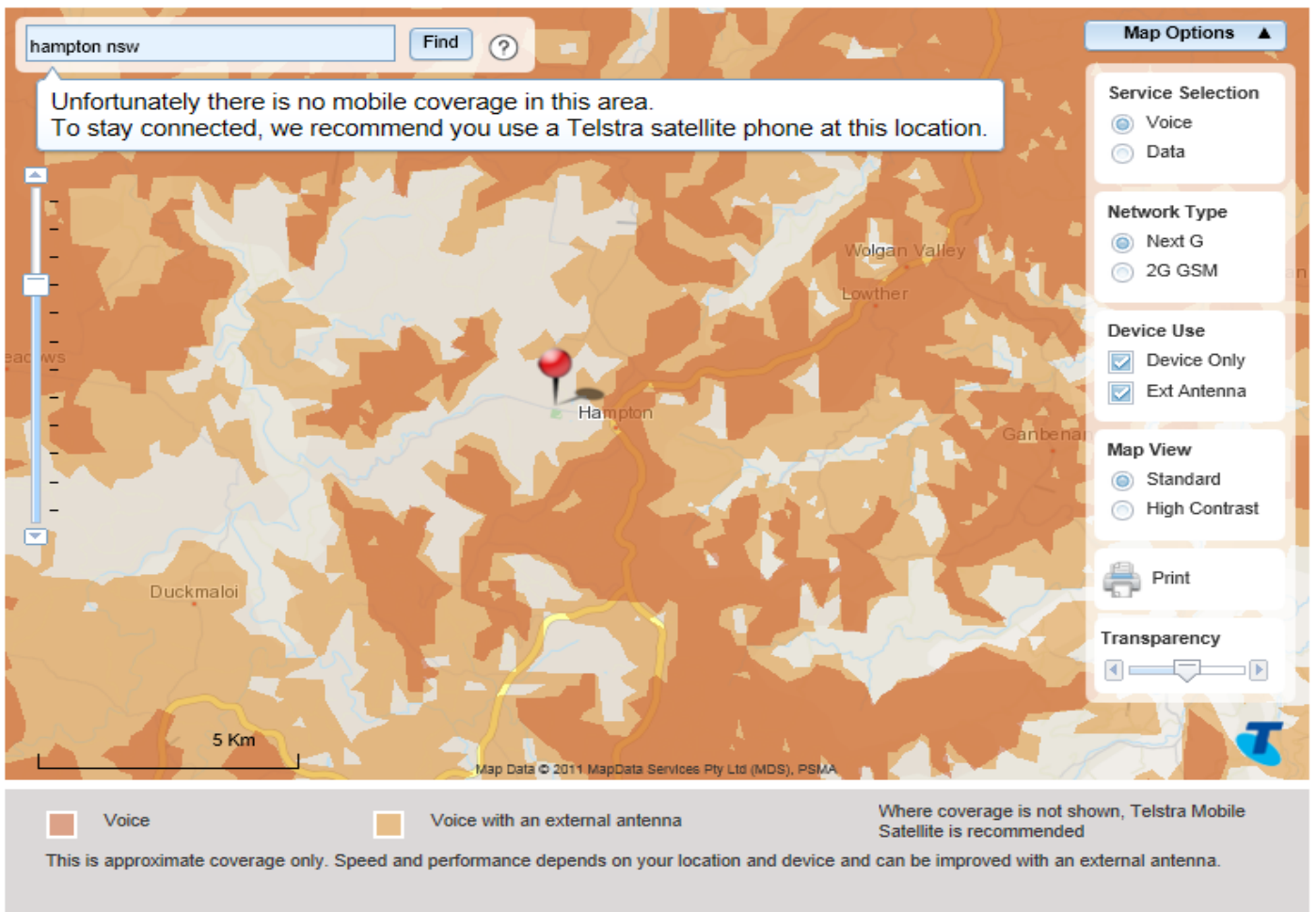
Simply select the type of device you are using and then enter your street, suburb or postcode

**Coverage:** ■ 3G Outdoor ■ 3G with Antenna ■ 3G Future Coverage

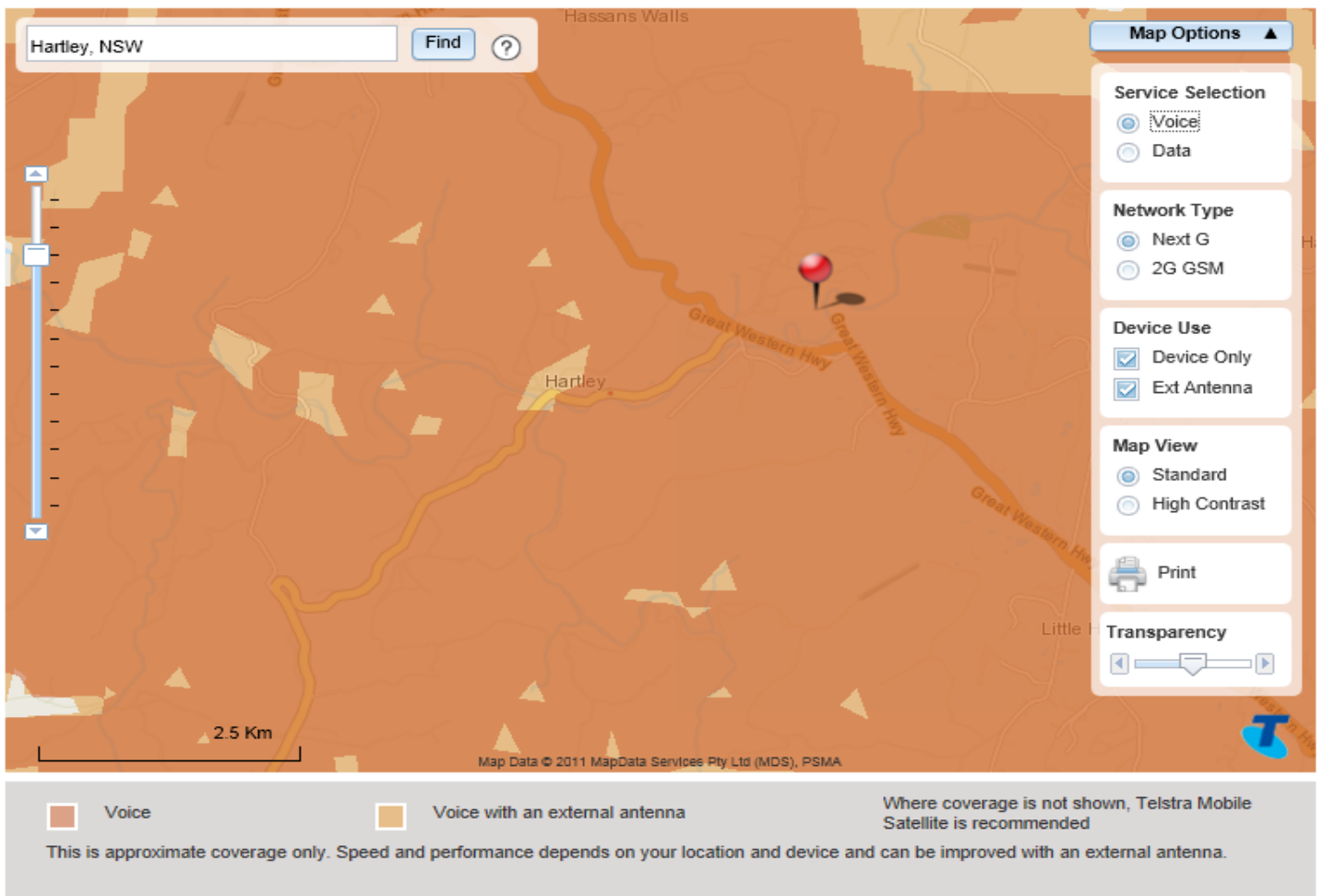
Coverage within the Optus Network is device dependent. To view coverage select the type of device you are using

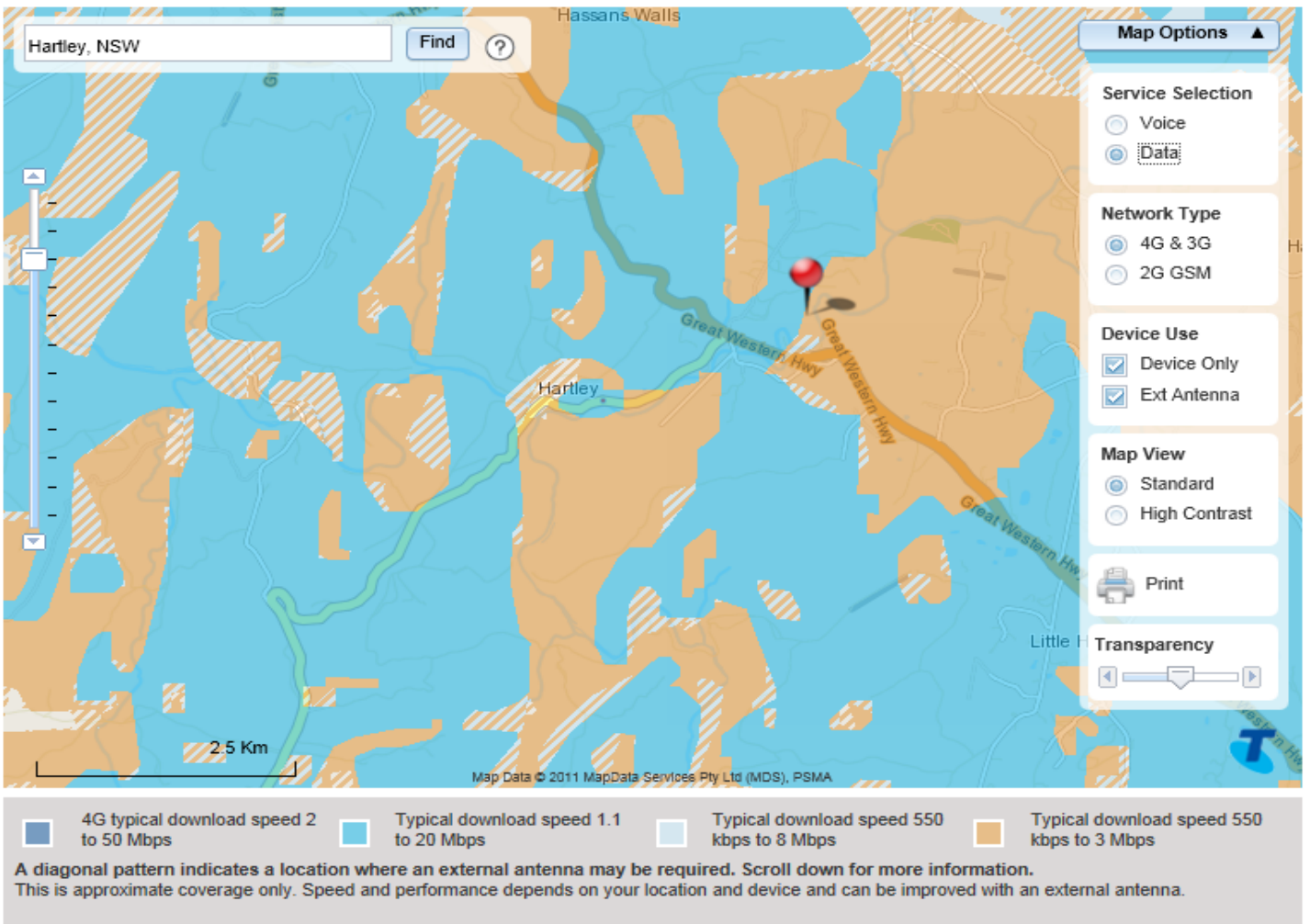
4G Plus  4G  3G Dual band  3G Single band  2G  
 Planned Coverage Information  
 3 Months  6 Months

**Contrast:** 0%  100%

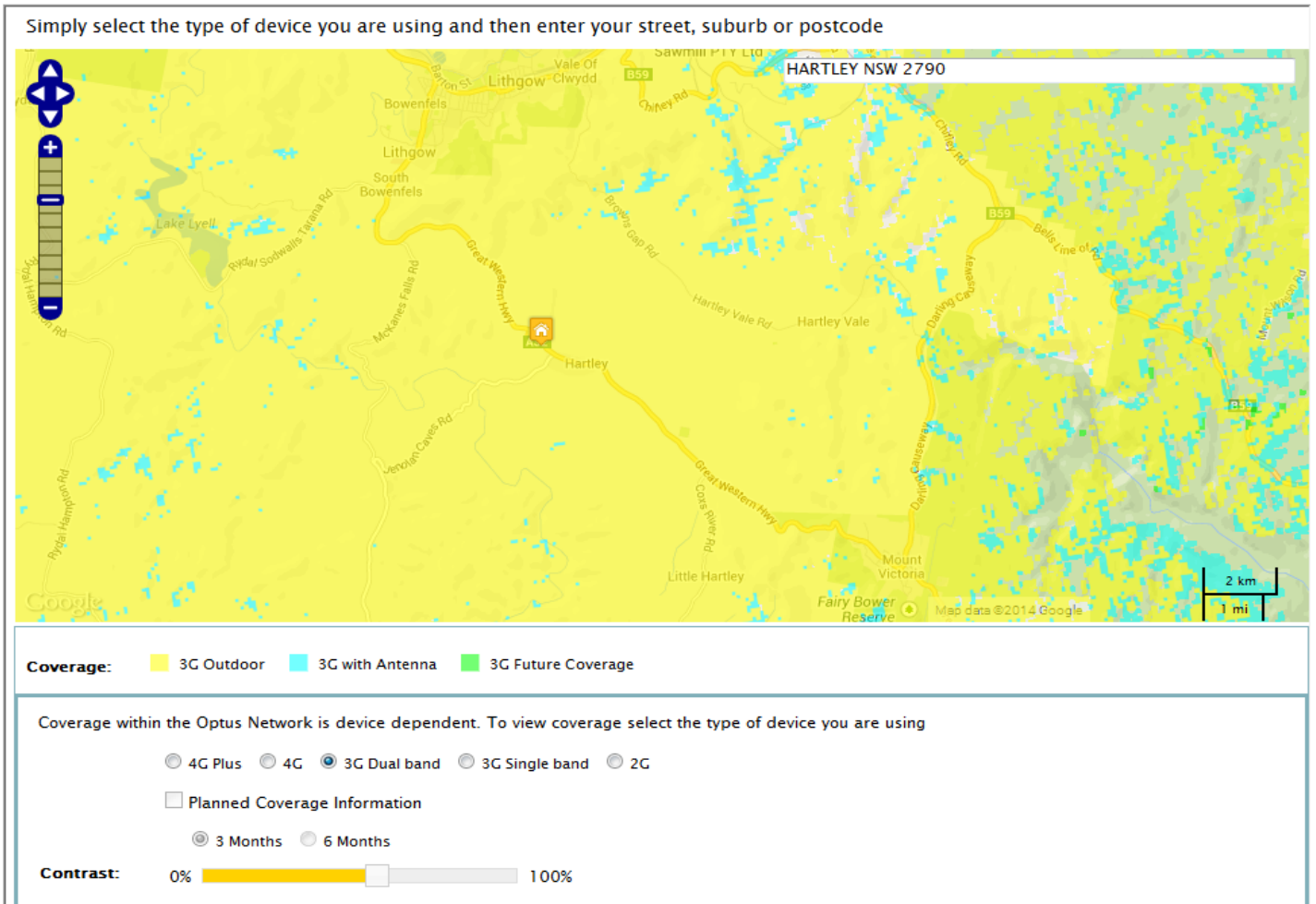


**Hartley**





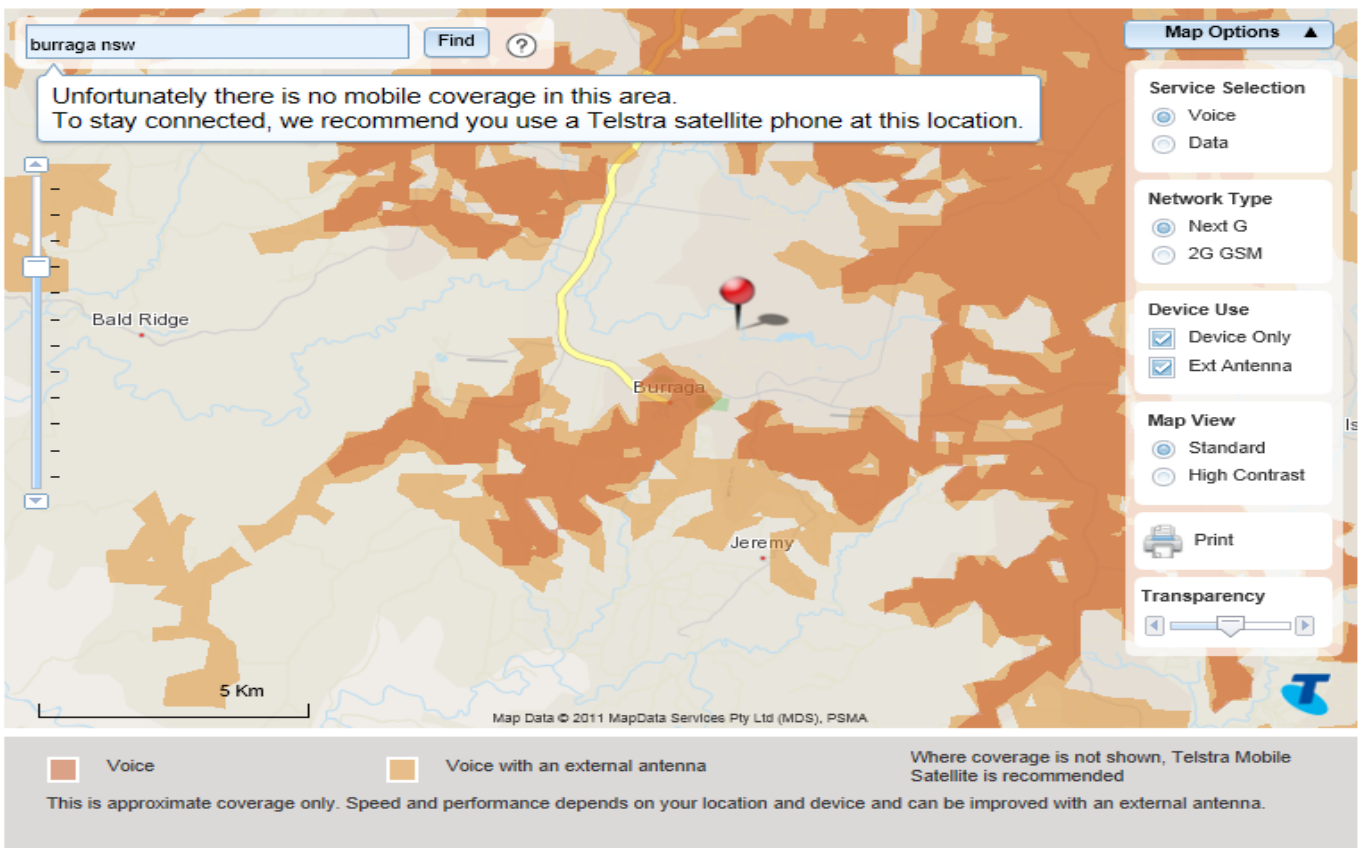
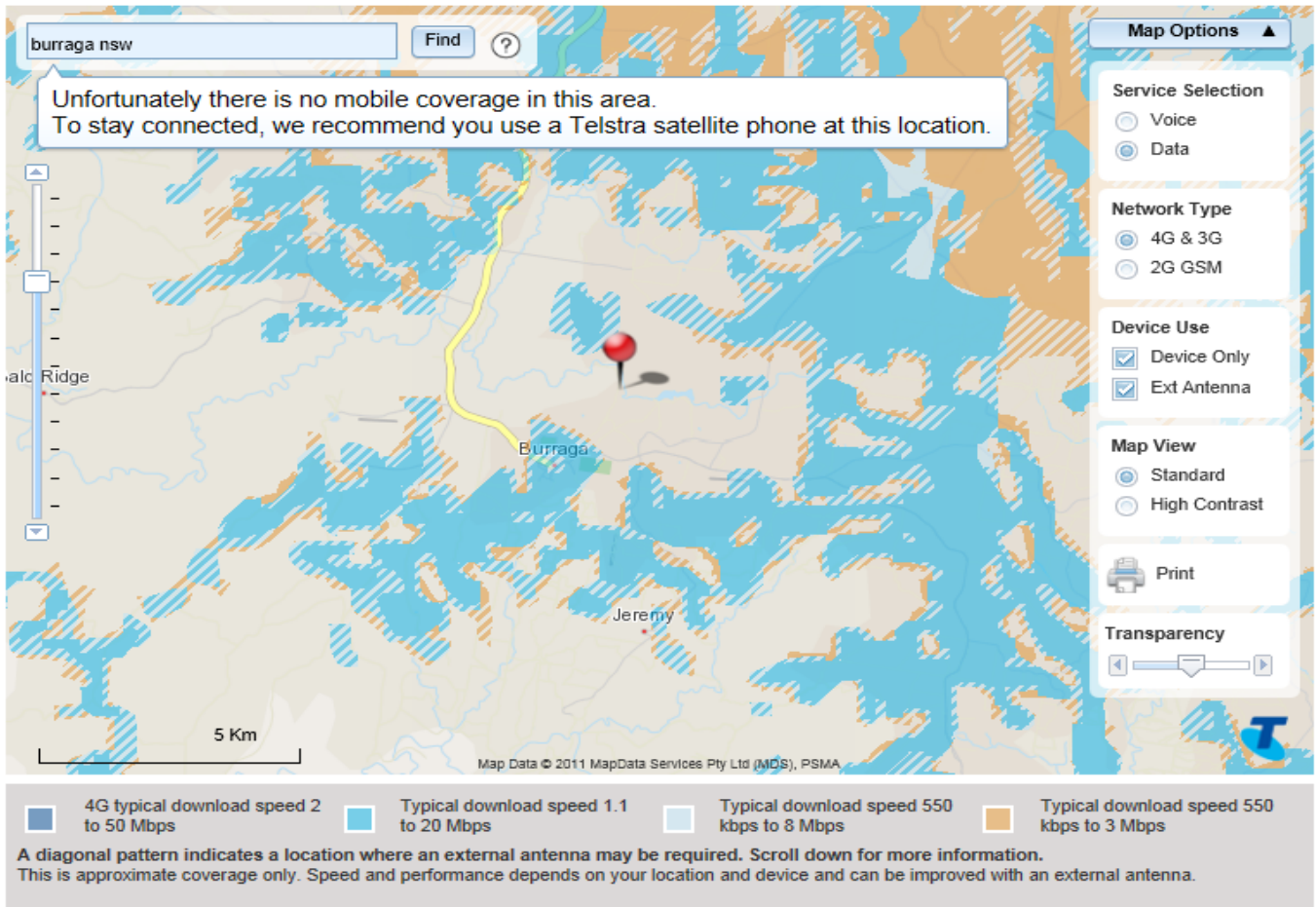
Optus

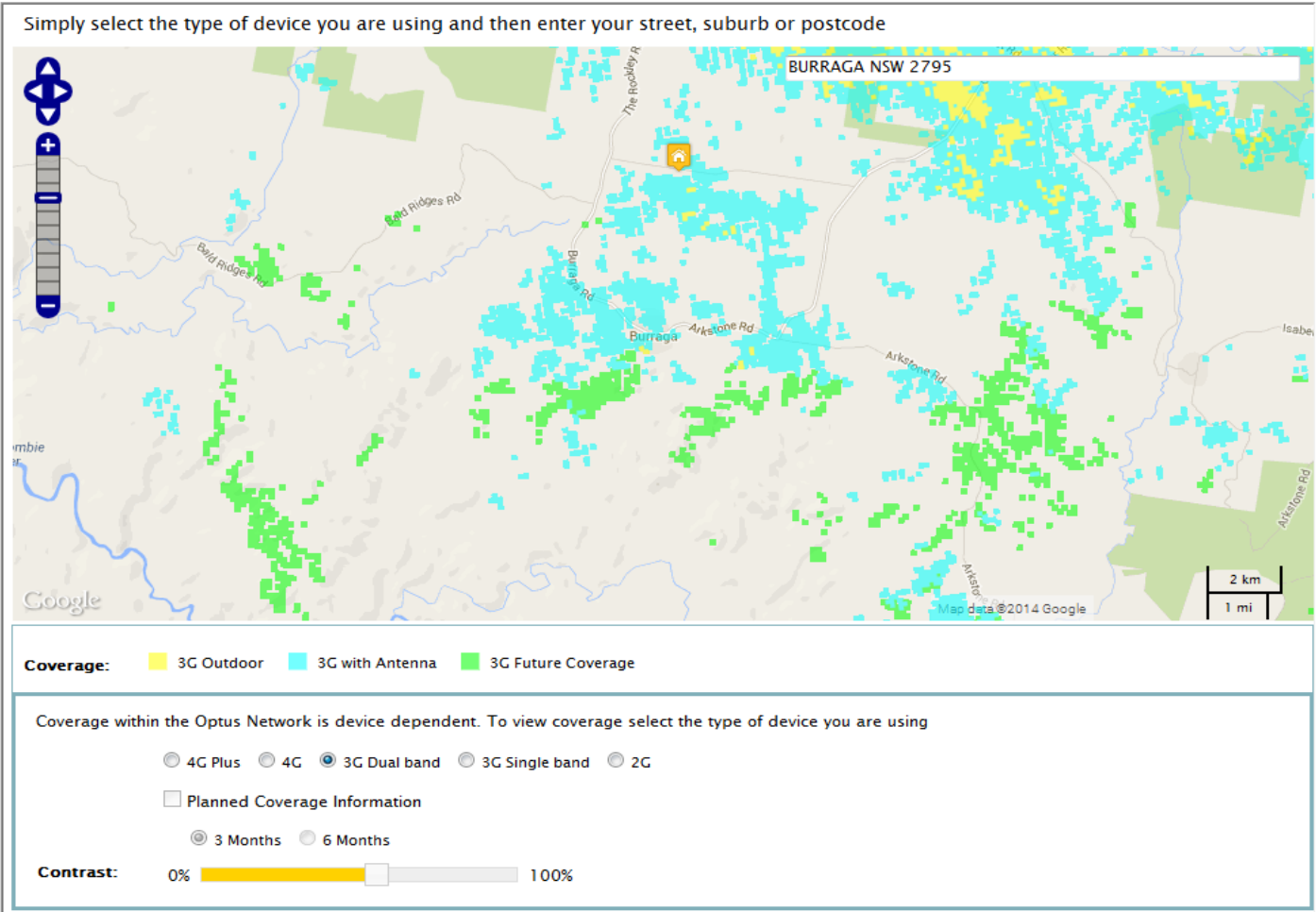


# OBERON LGA

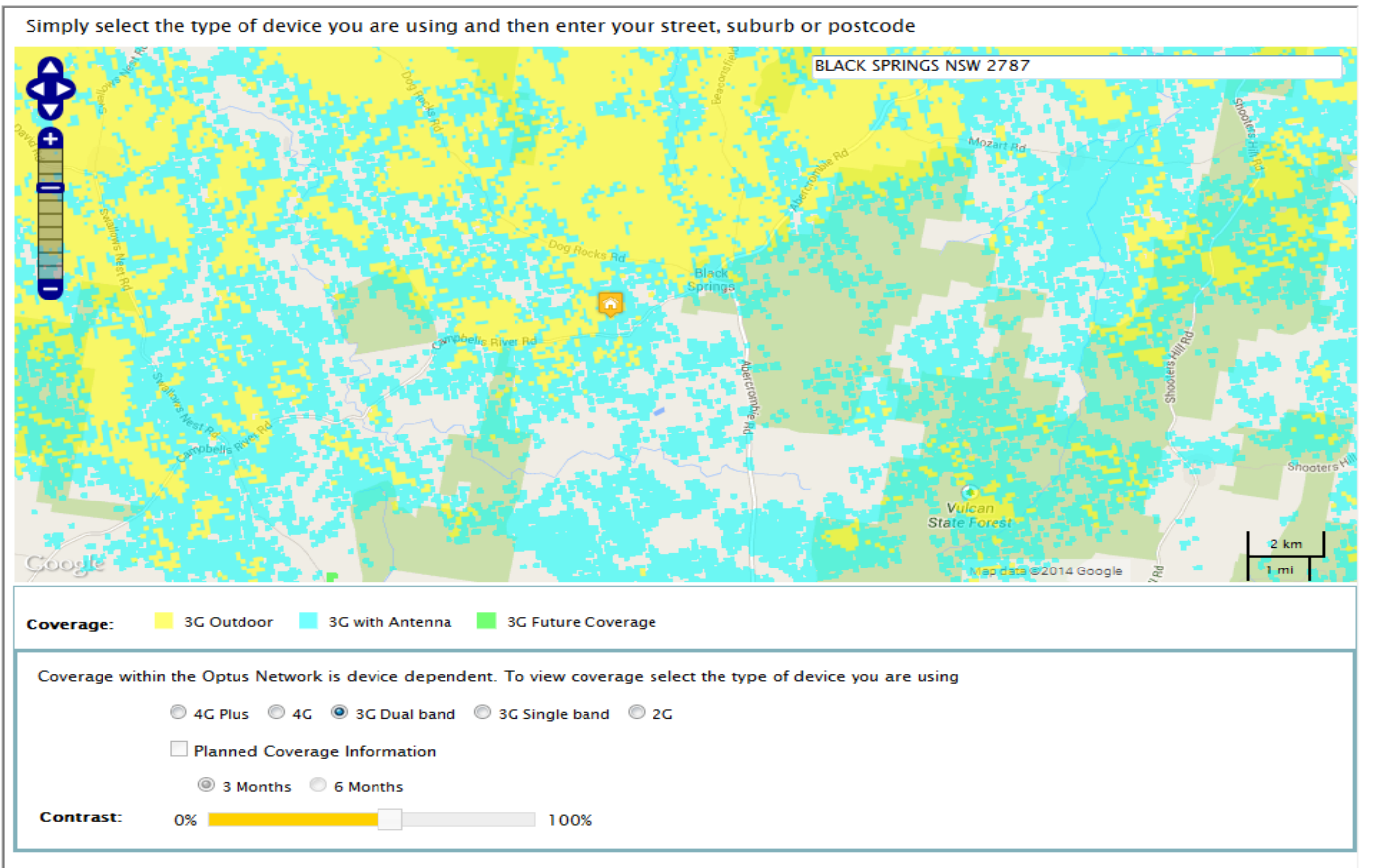
## Burruga

Telstra

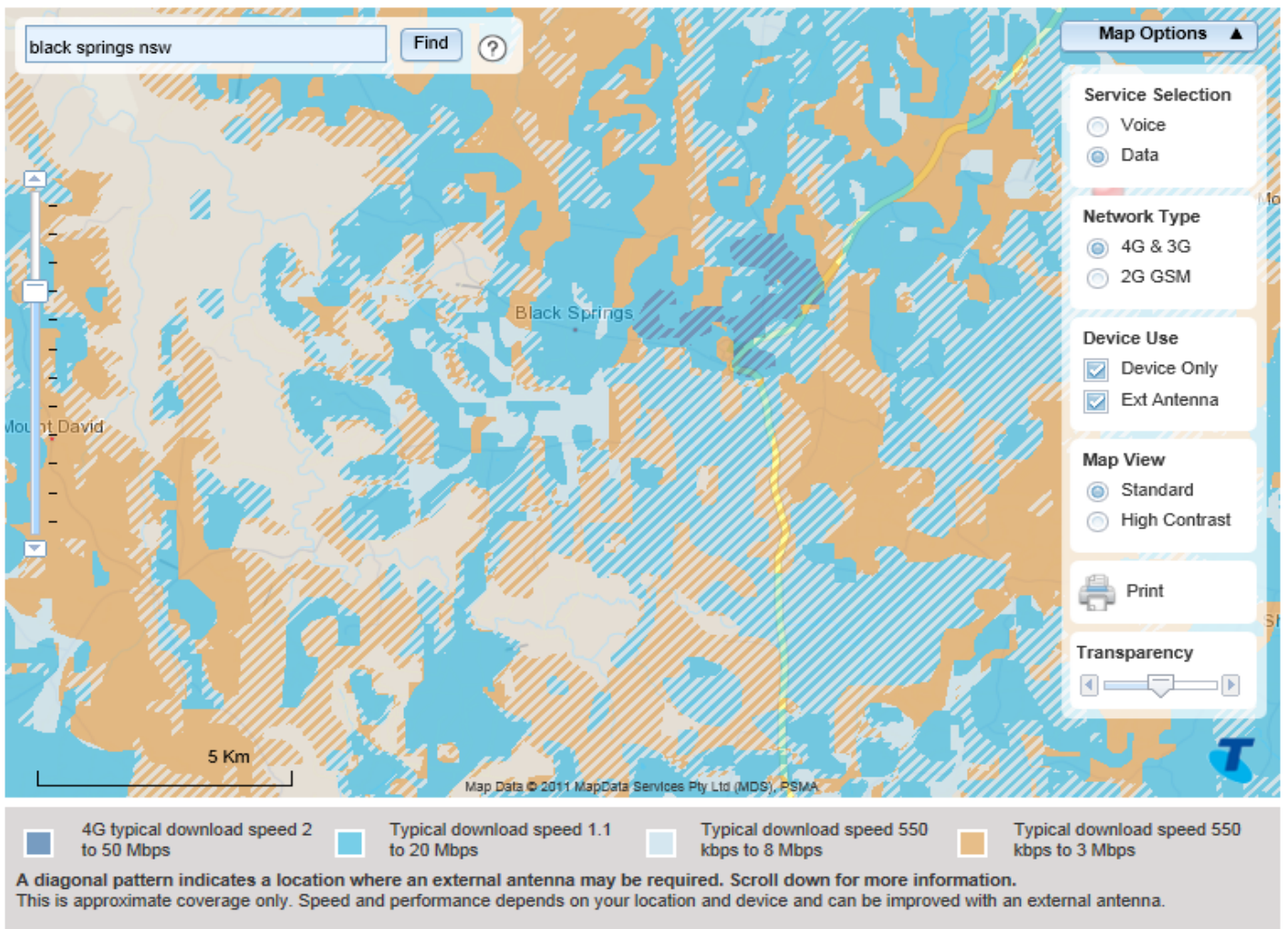
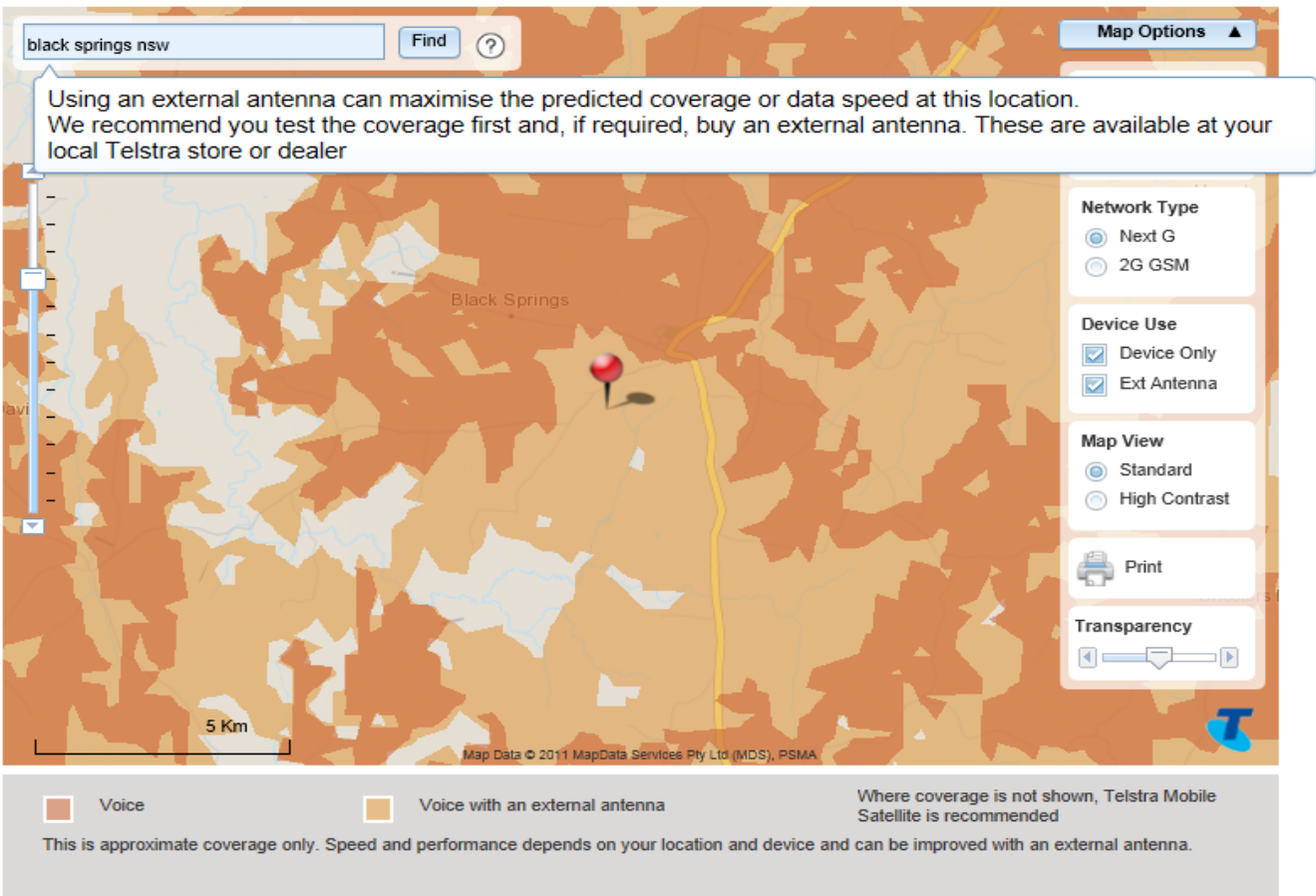




**Black Springs**

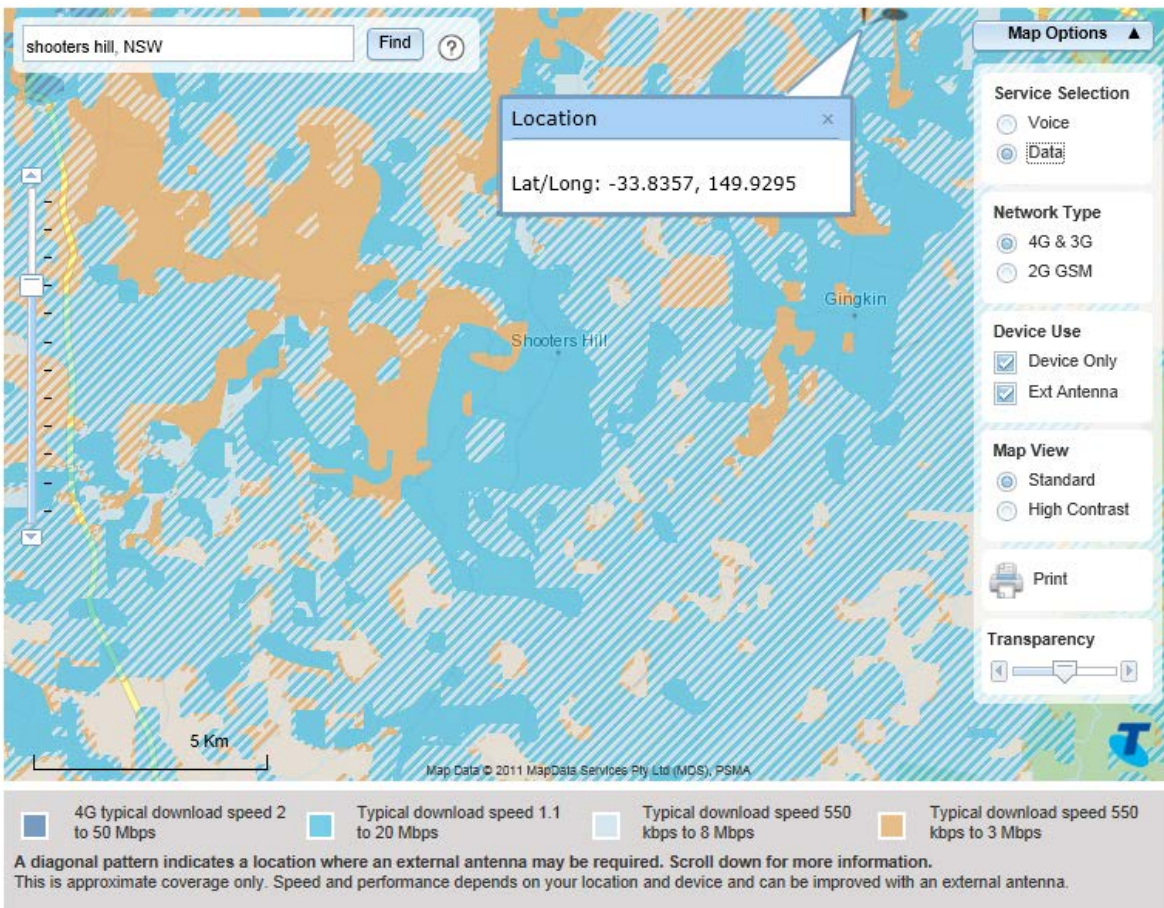
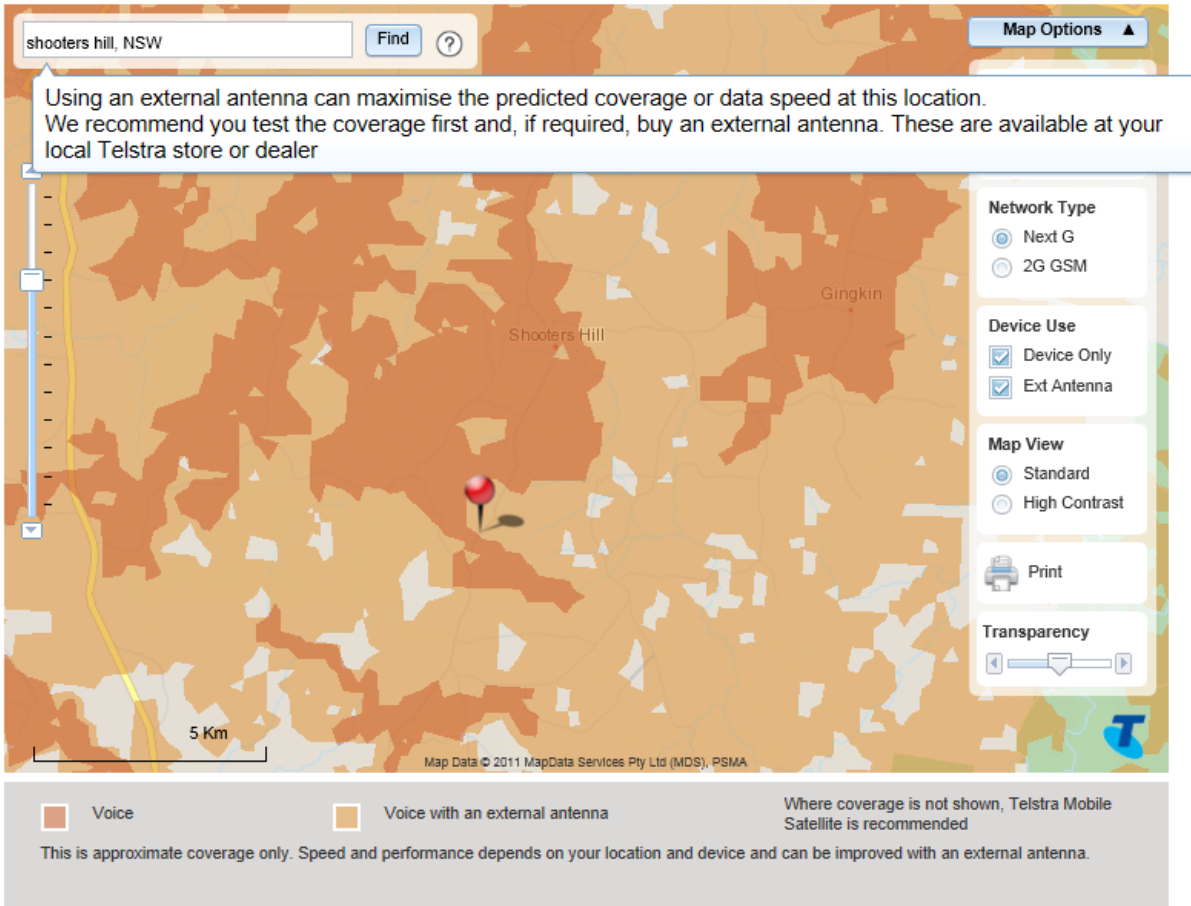


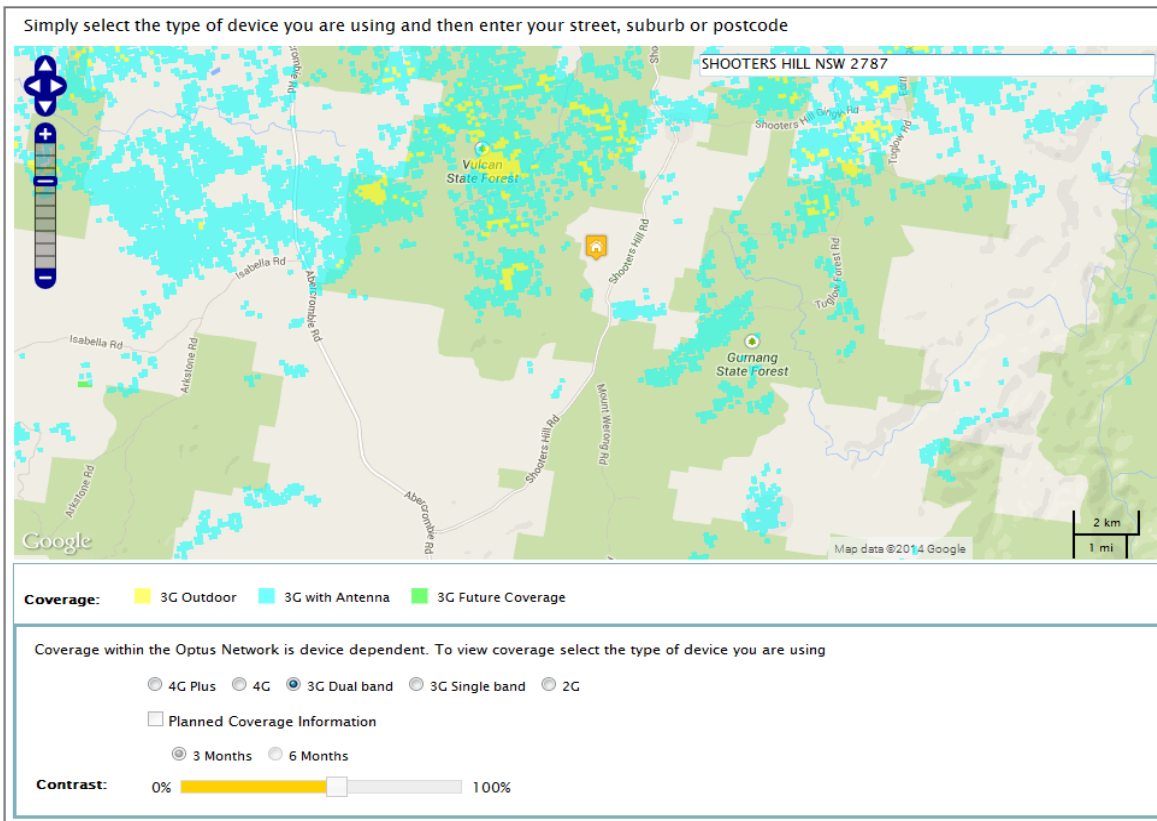




# Shooters Hill

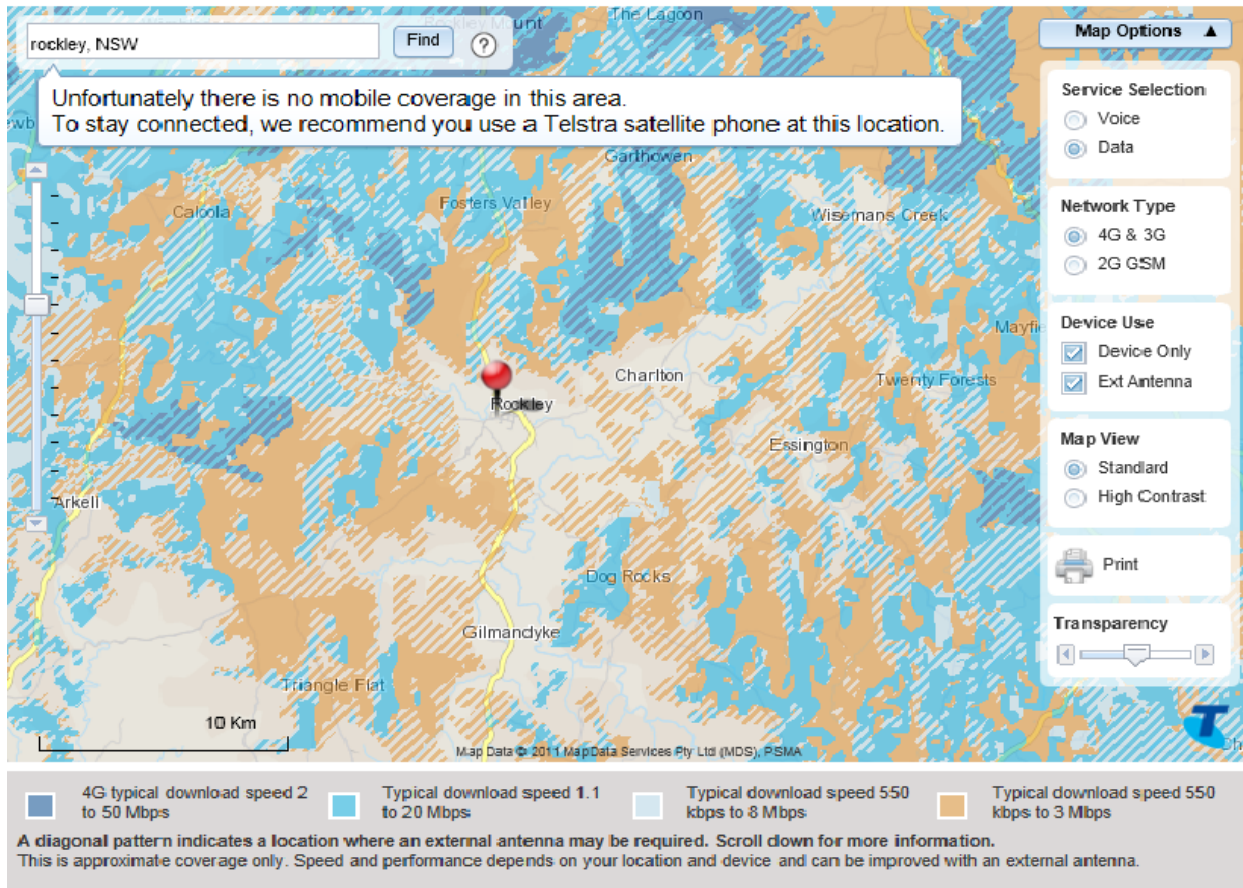
Telstra

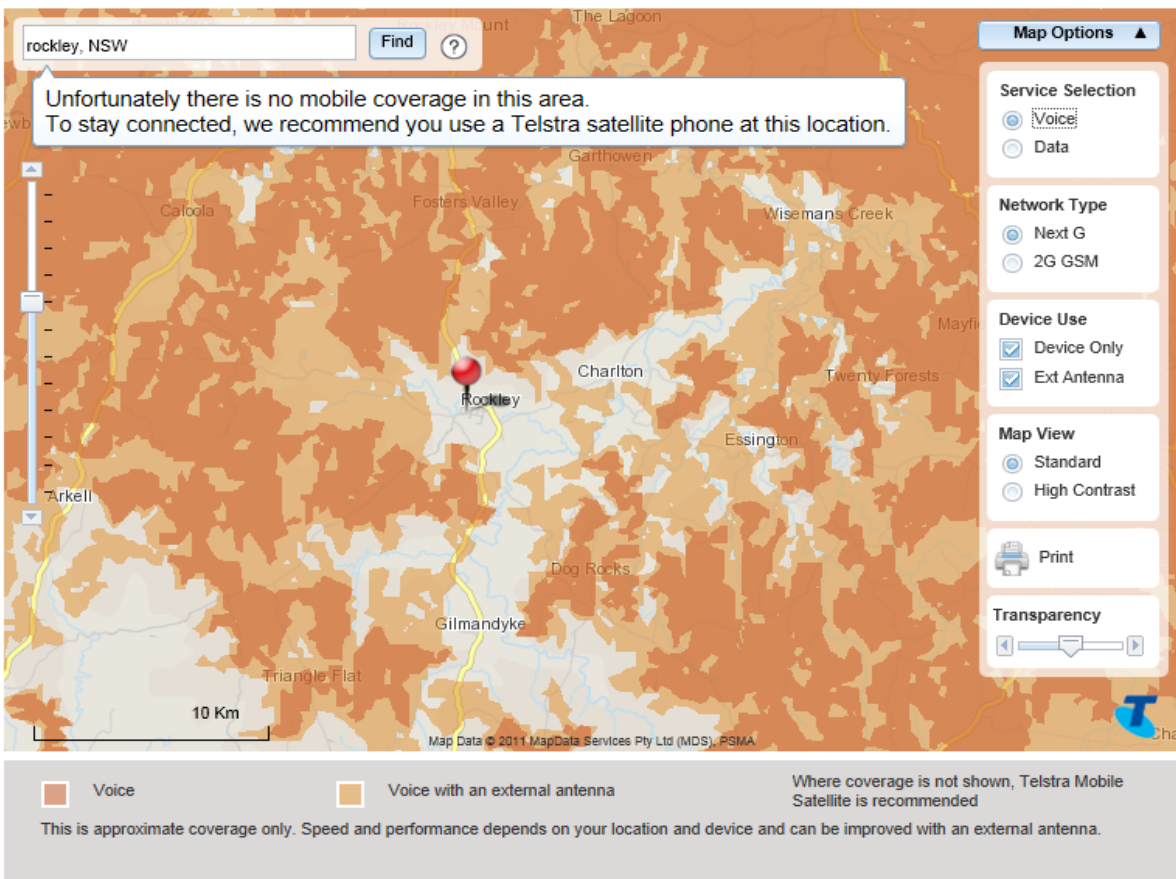




**Rockley**

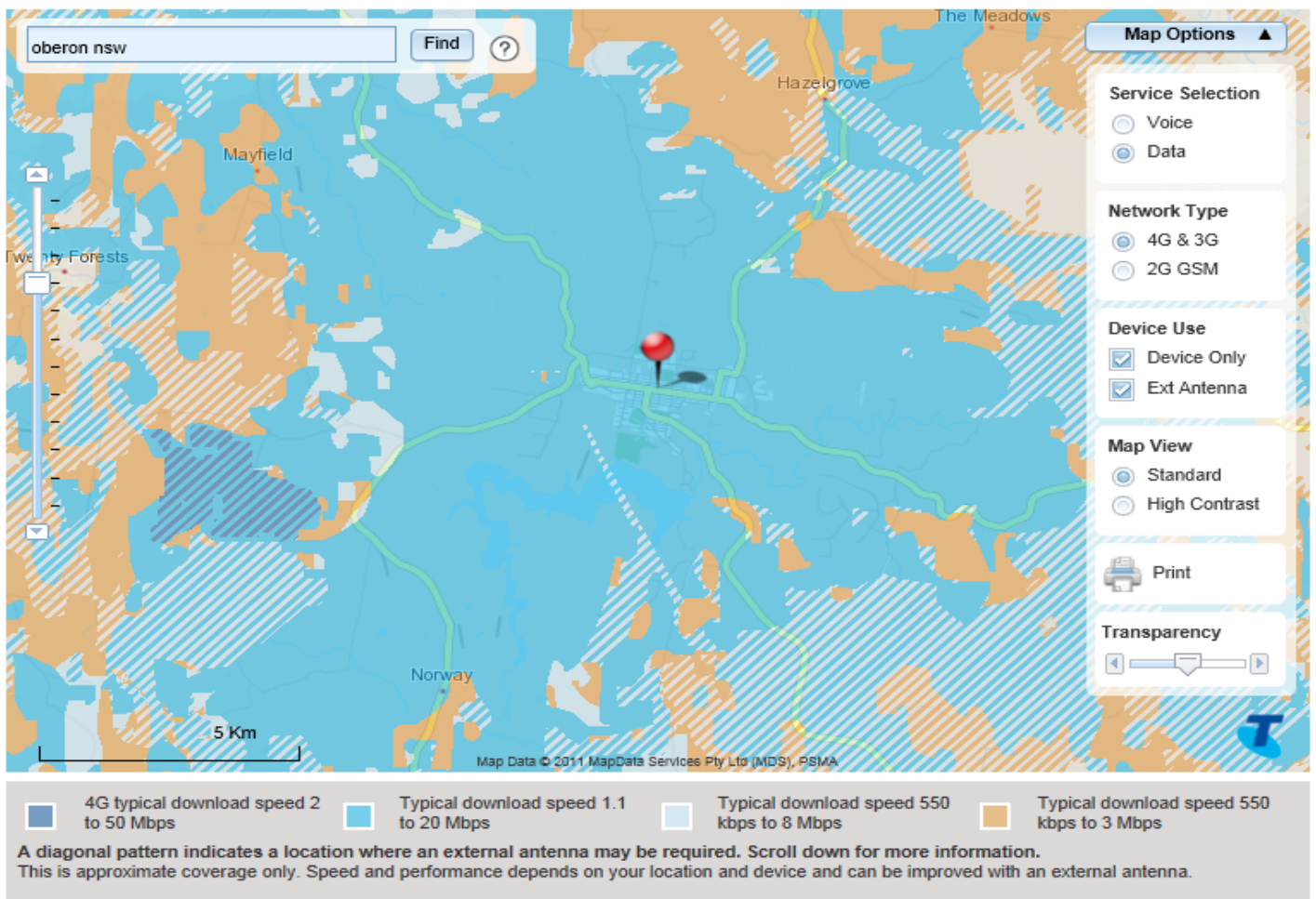
Telstra

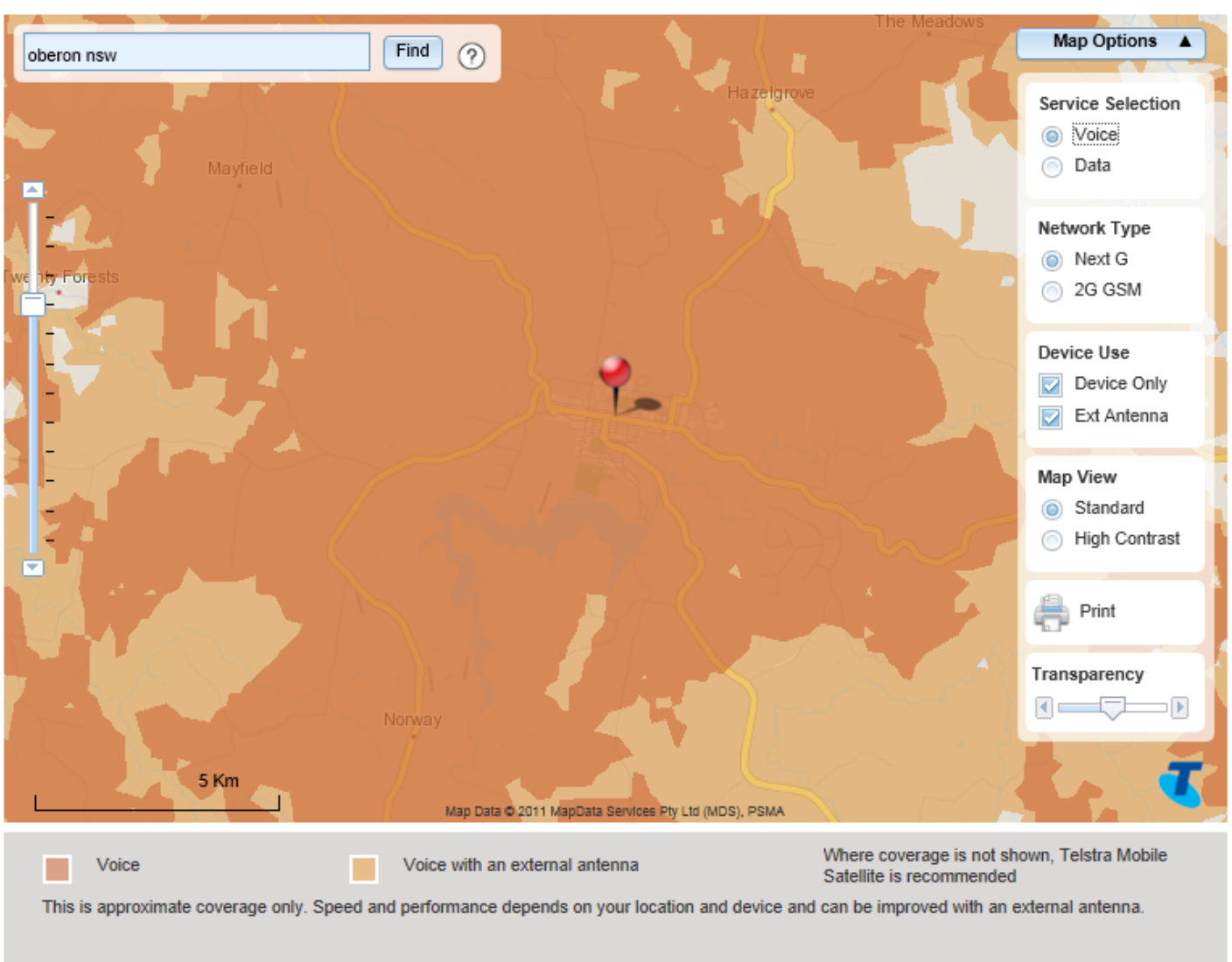




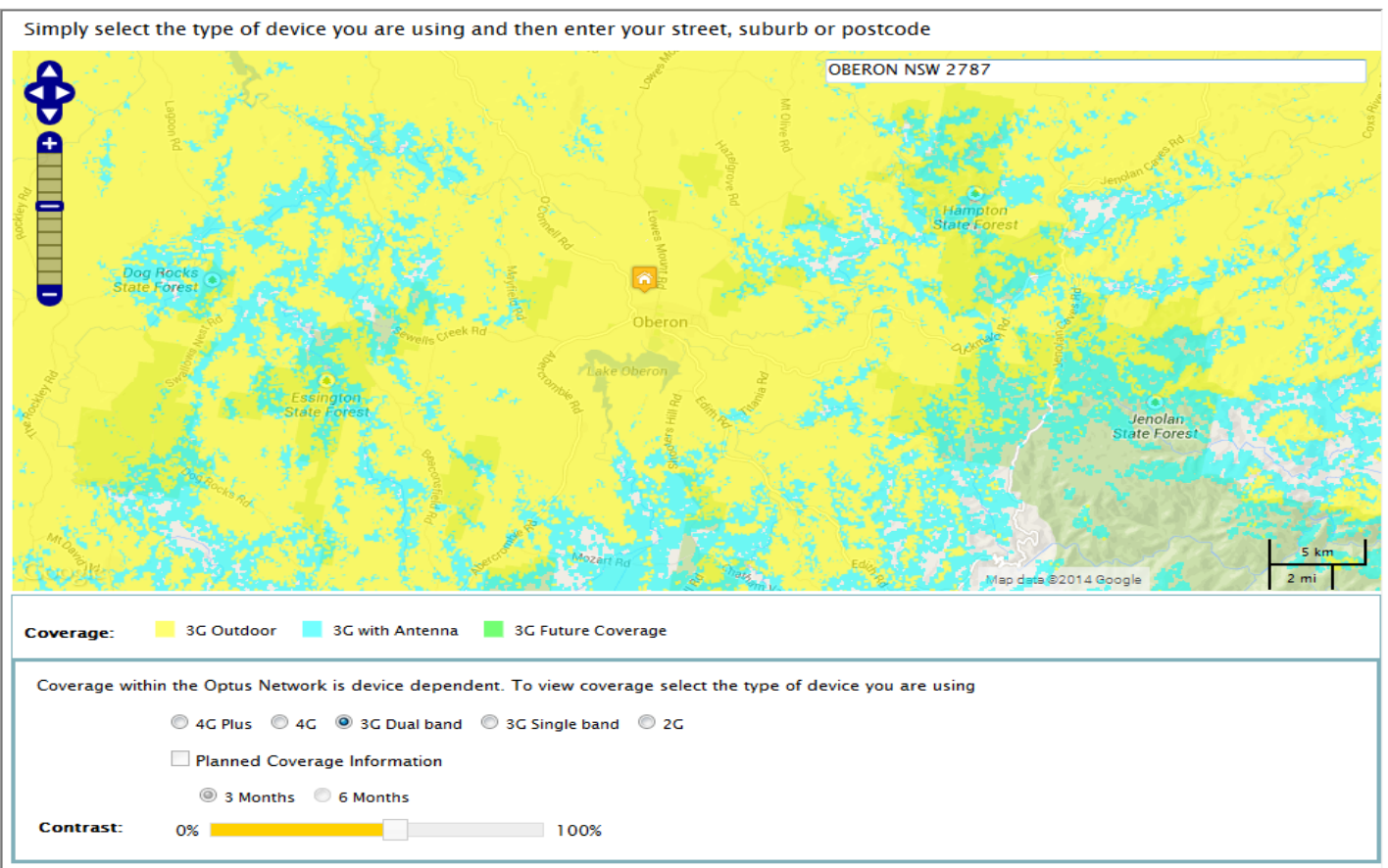
## Oberon

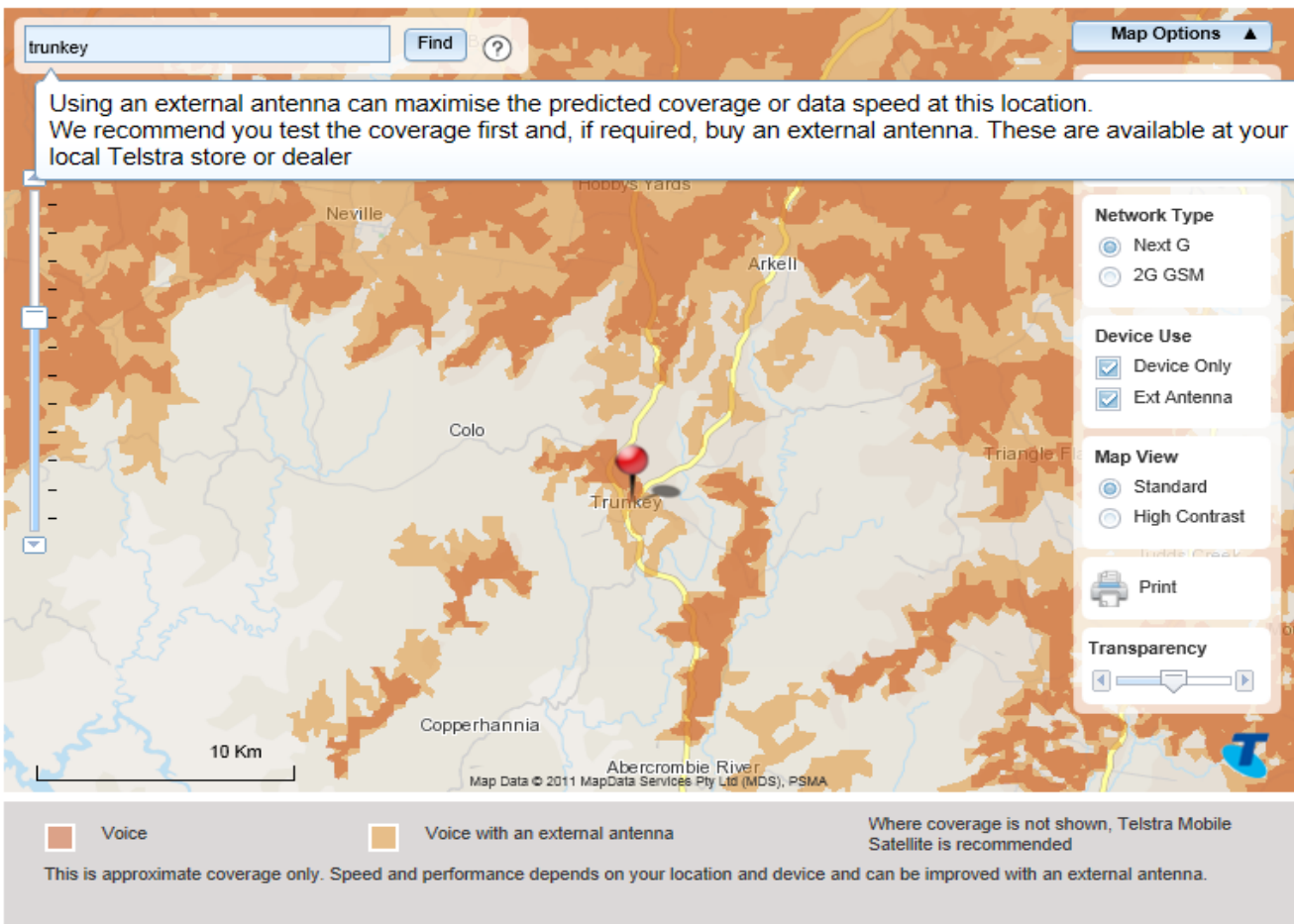
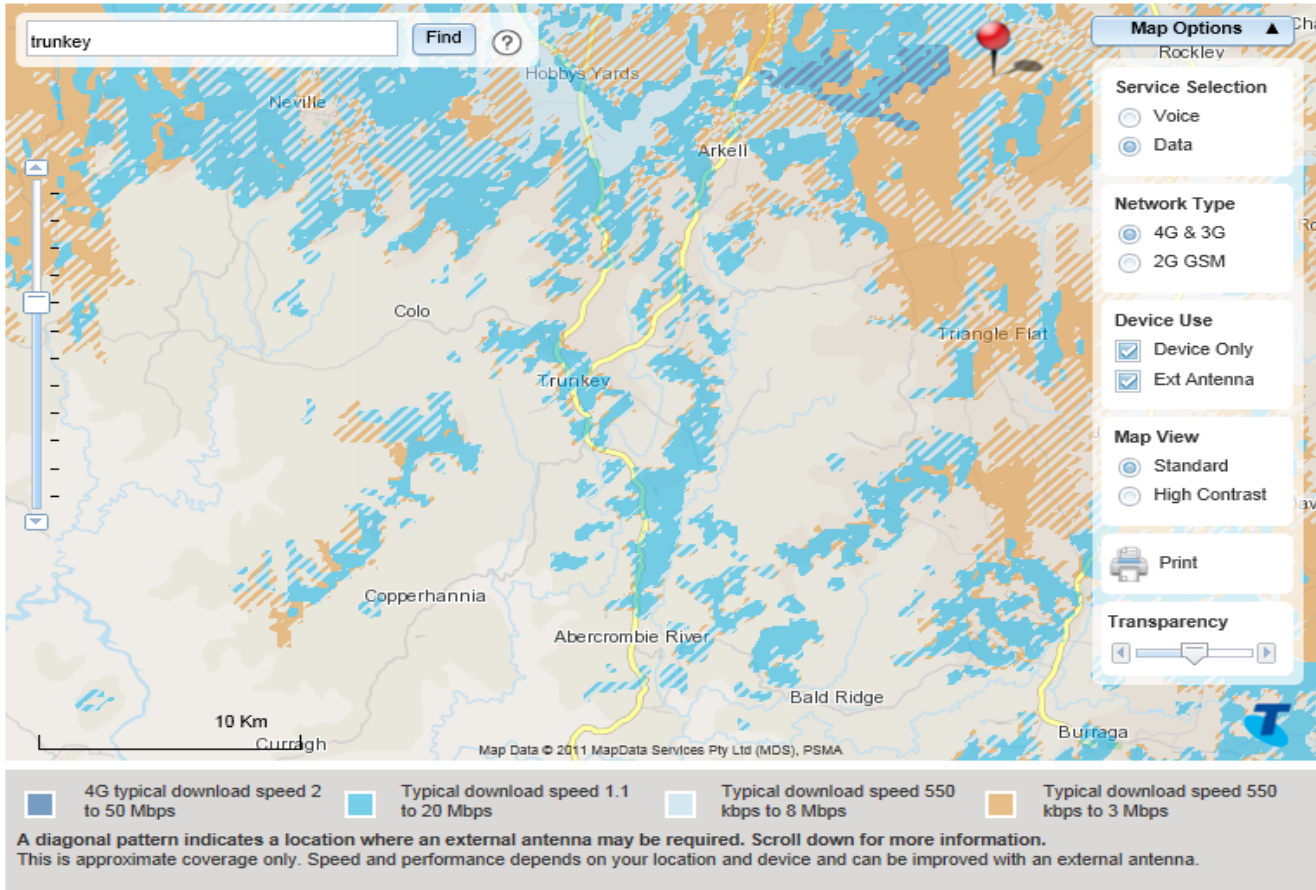
## Telstra

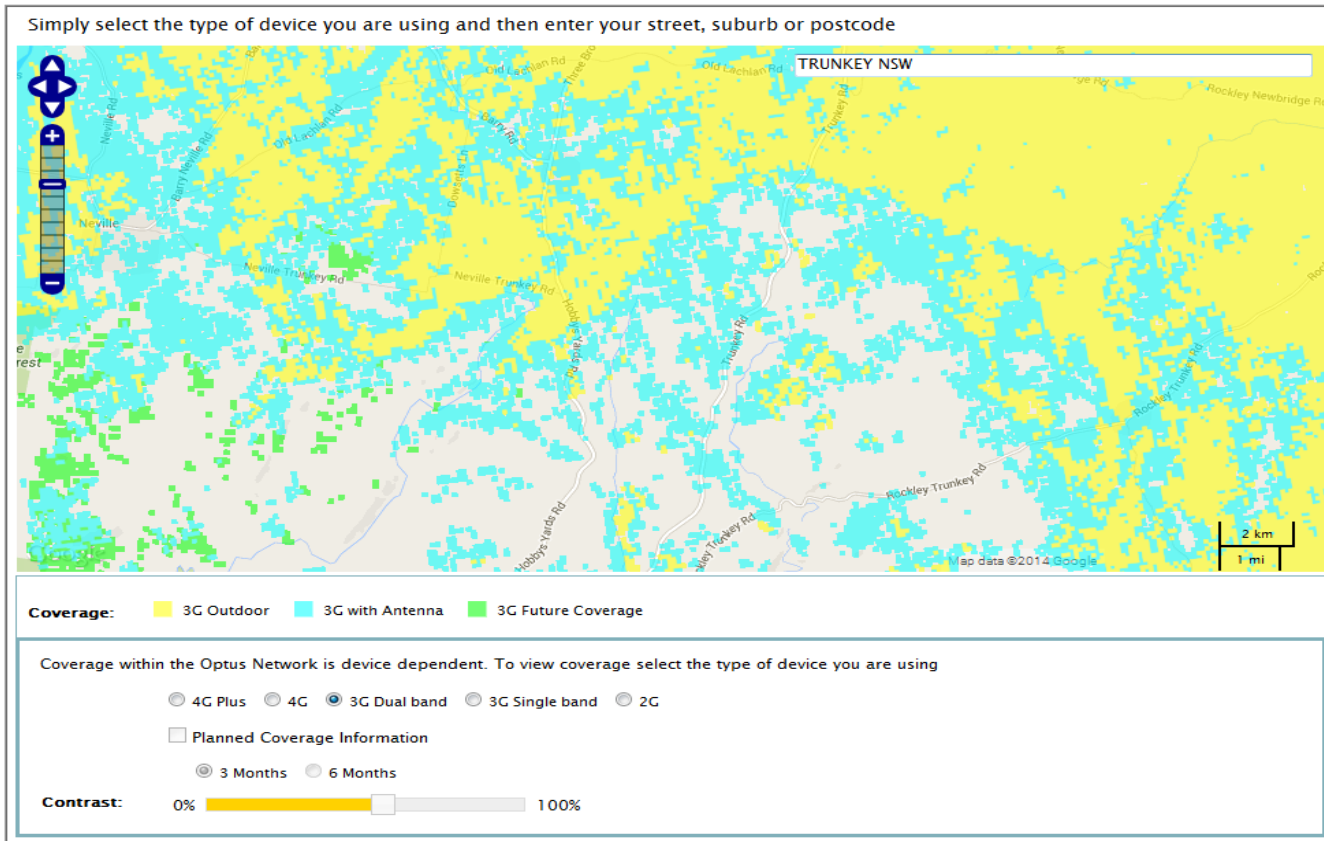




## Optus

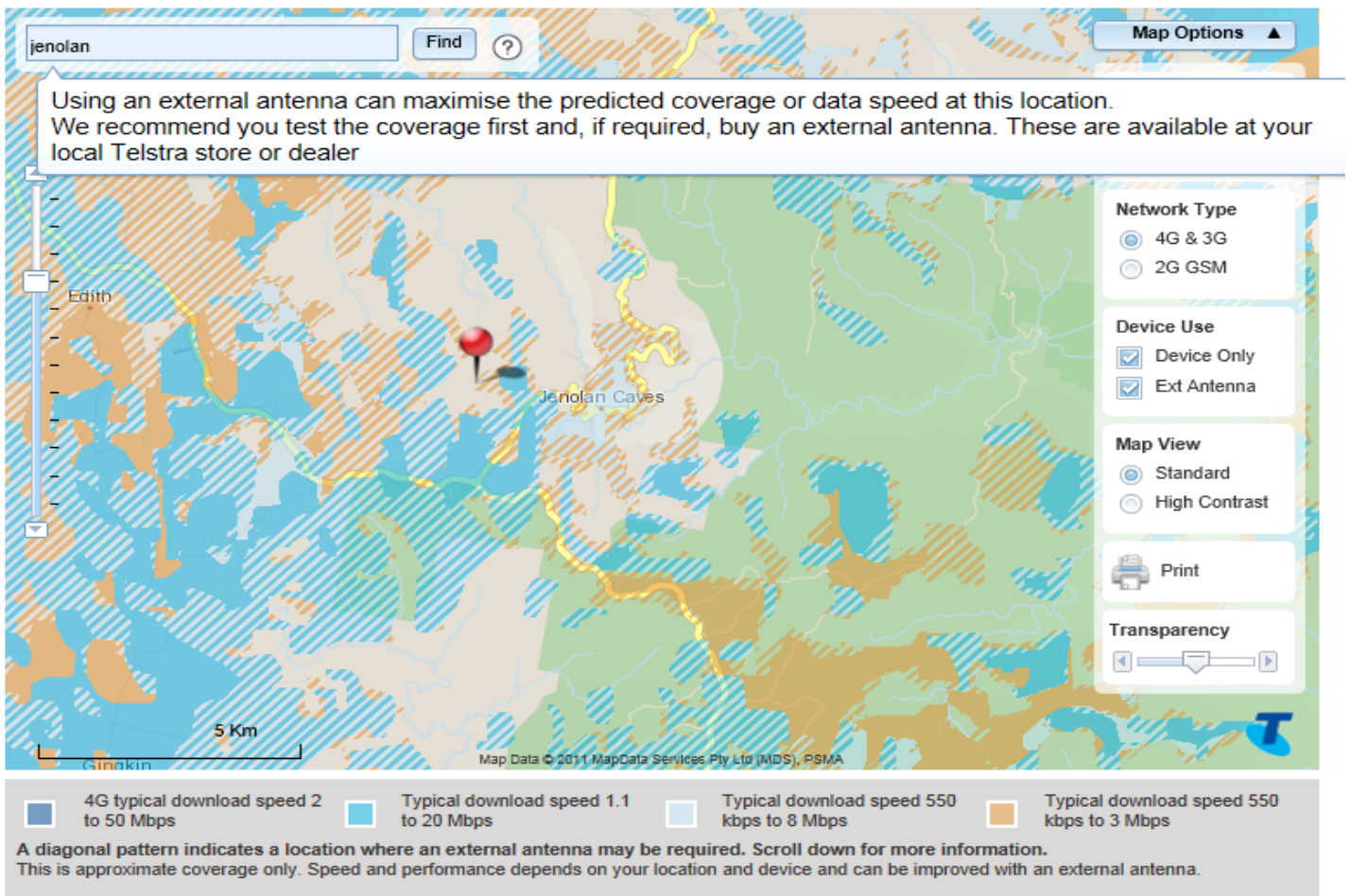


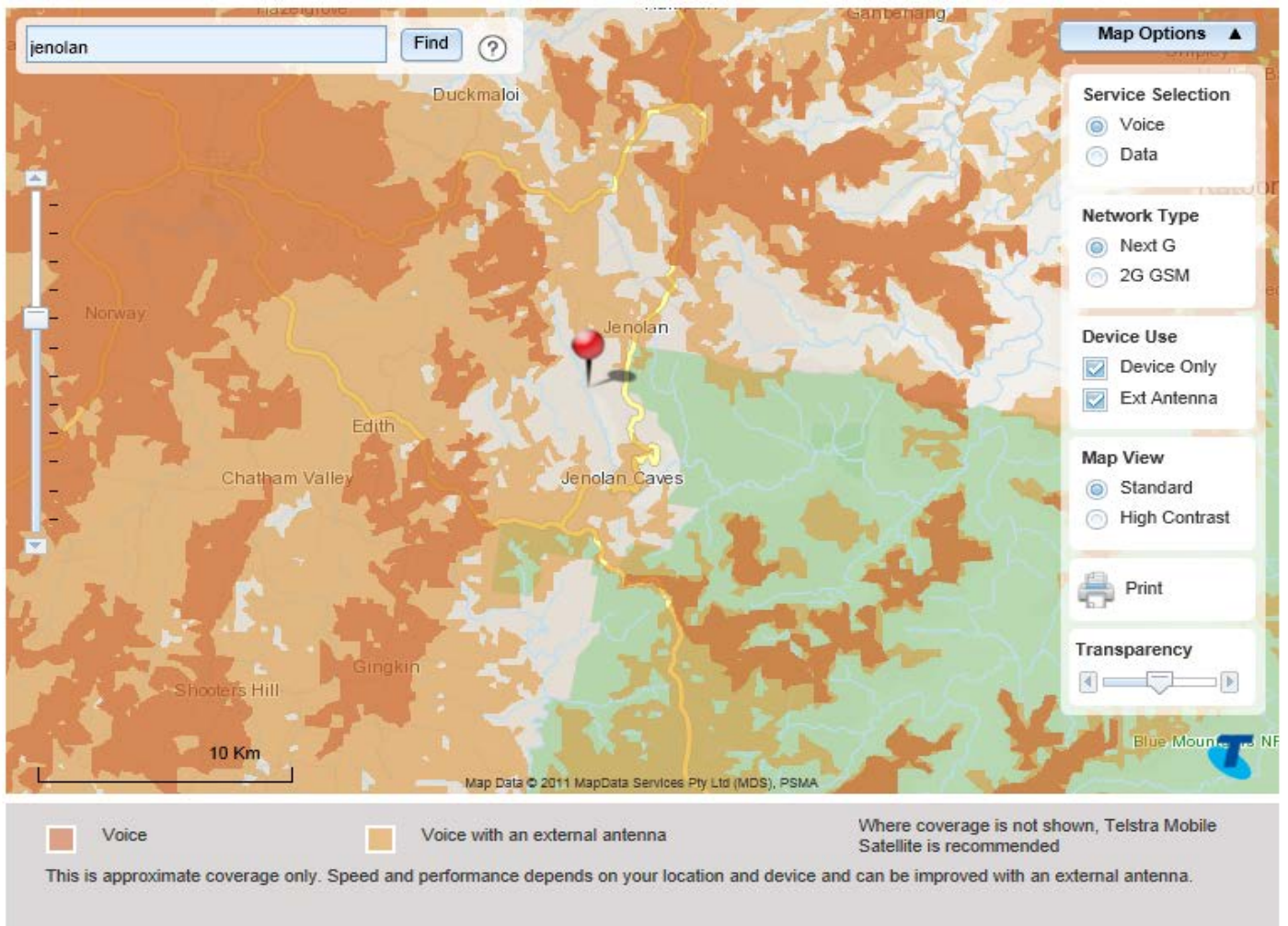




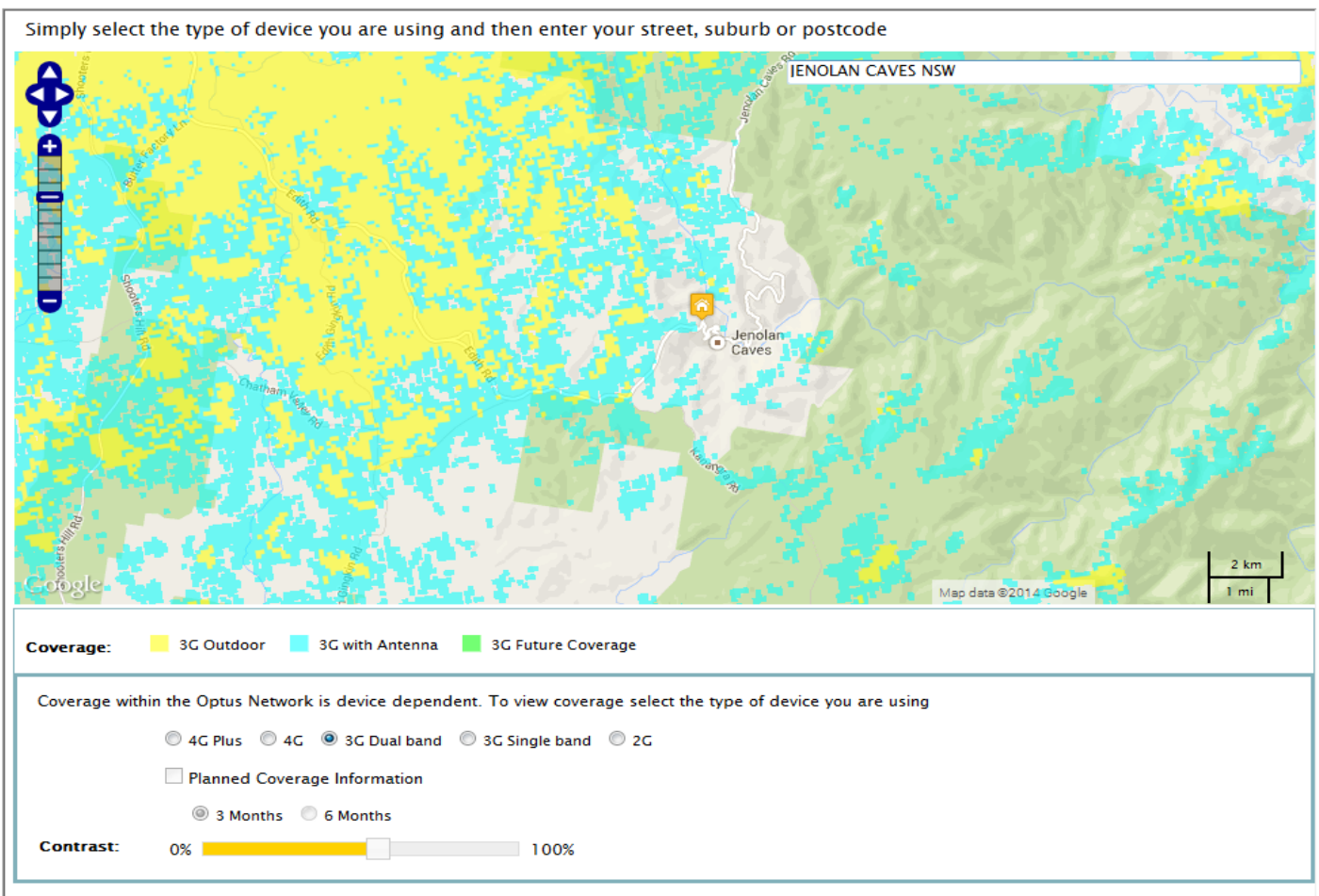
**Jenolan Caves/Jenolan**

Telstra





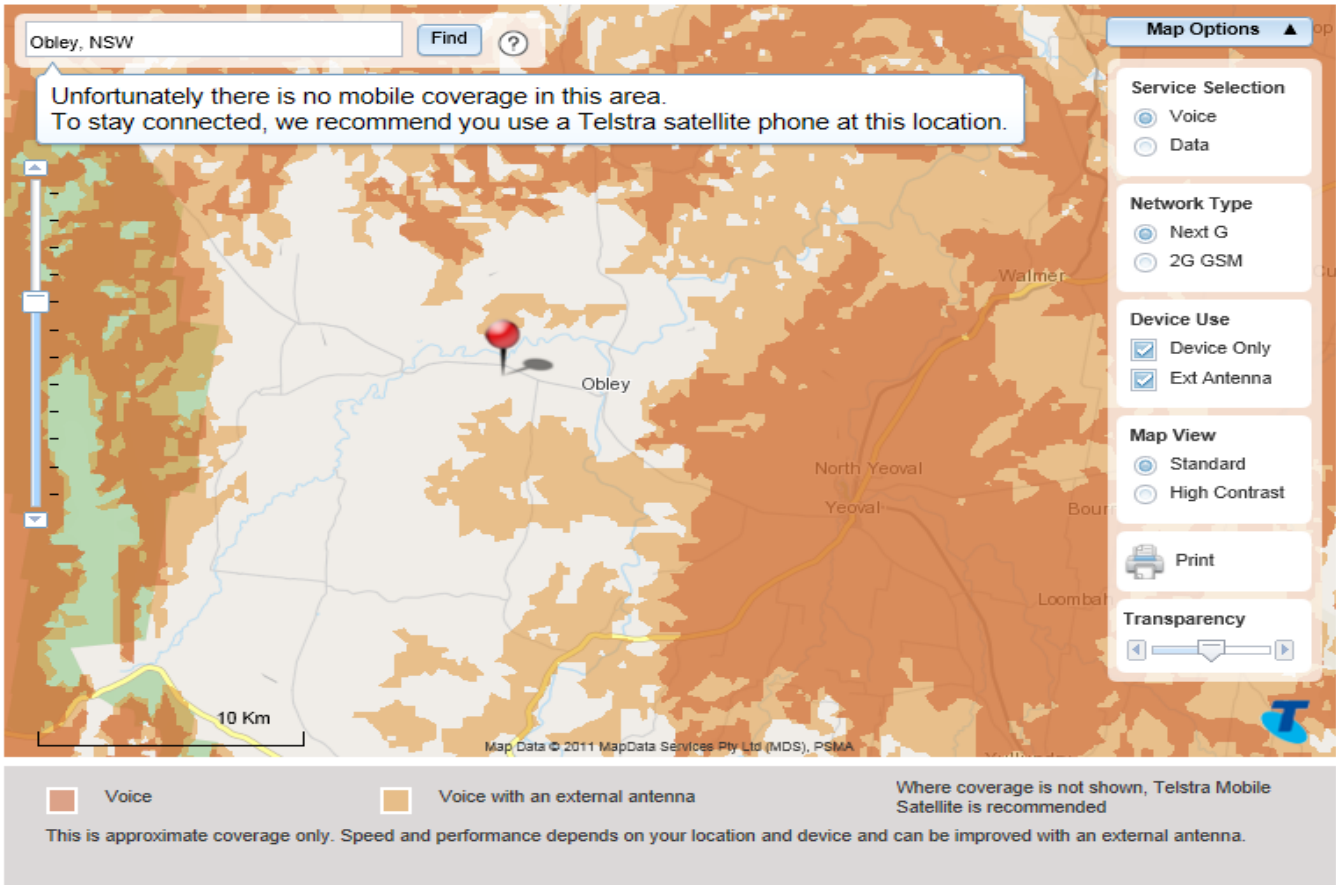
## Optus



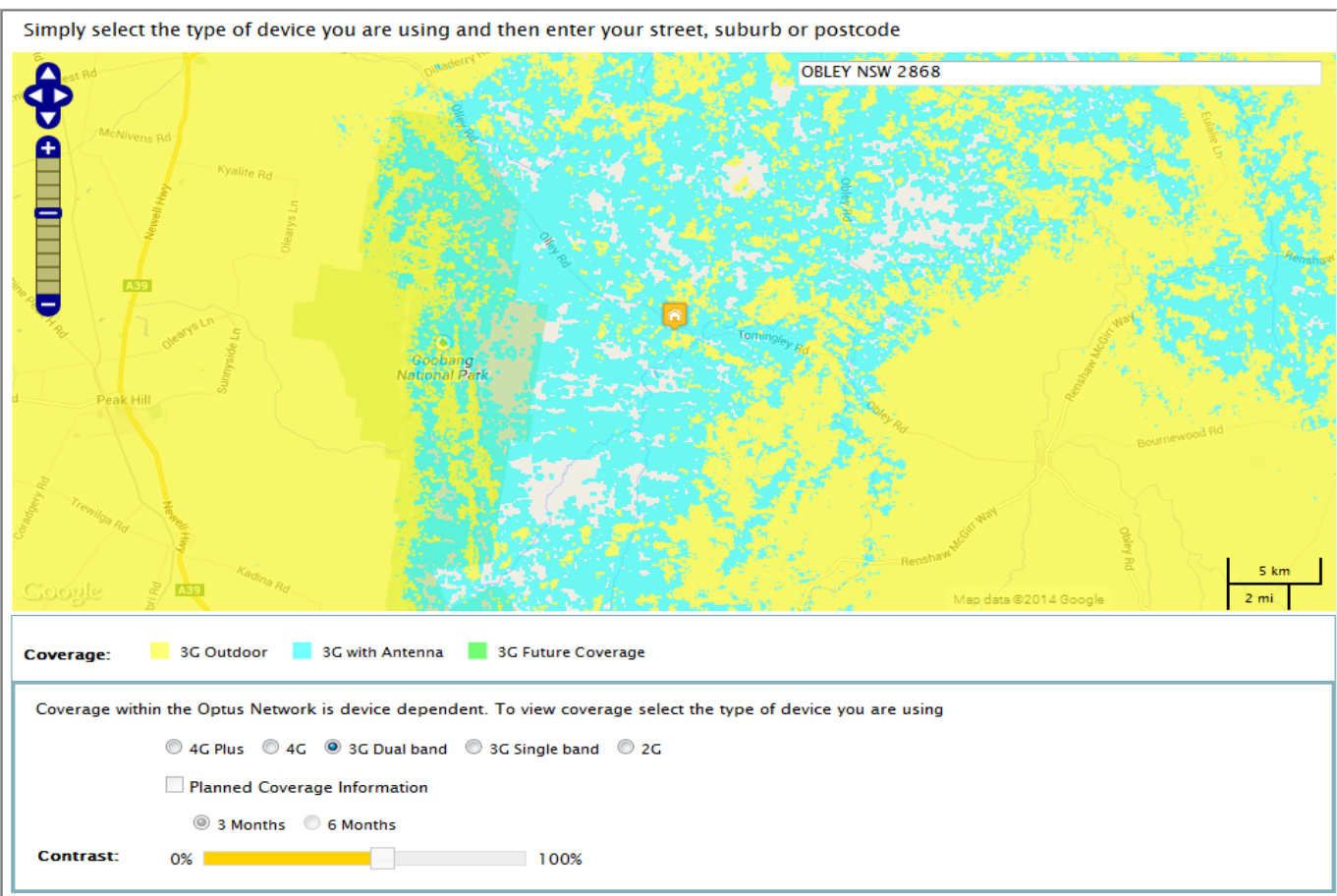


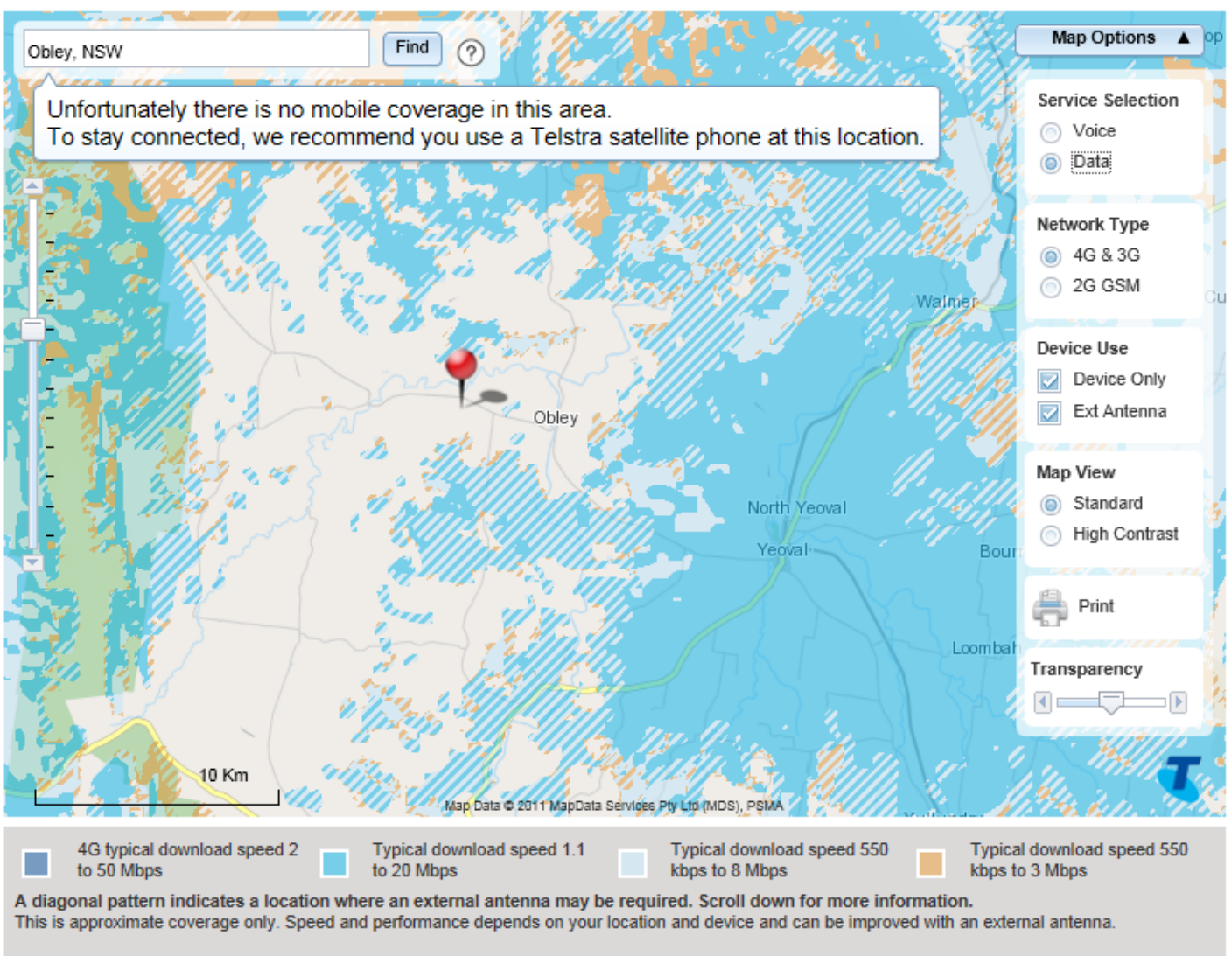
Obley

Telstra:



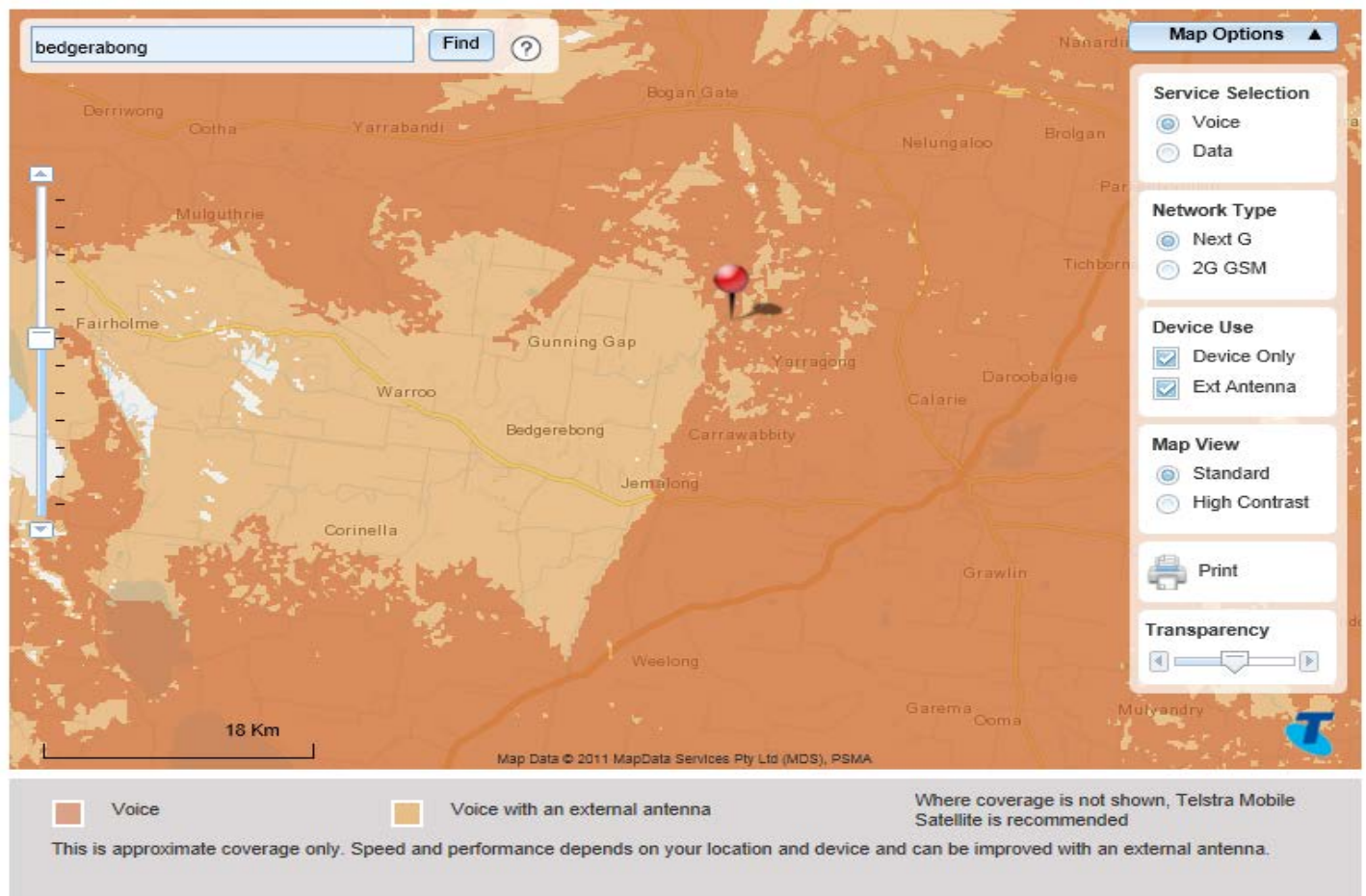
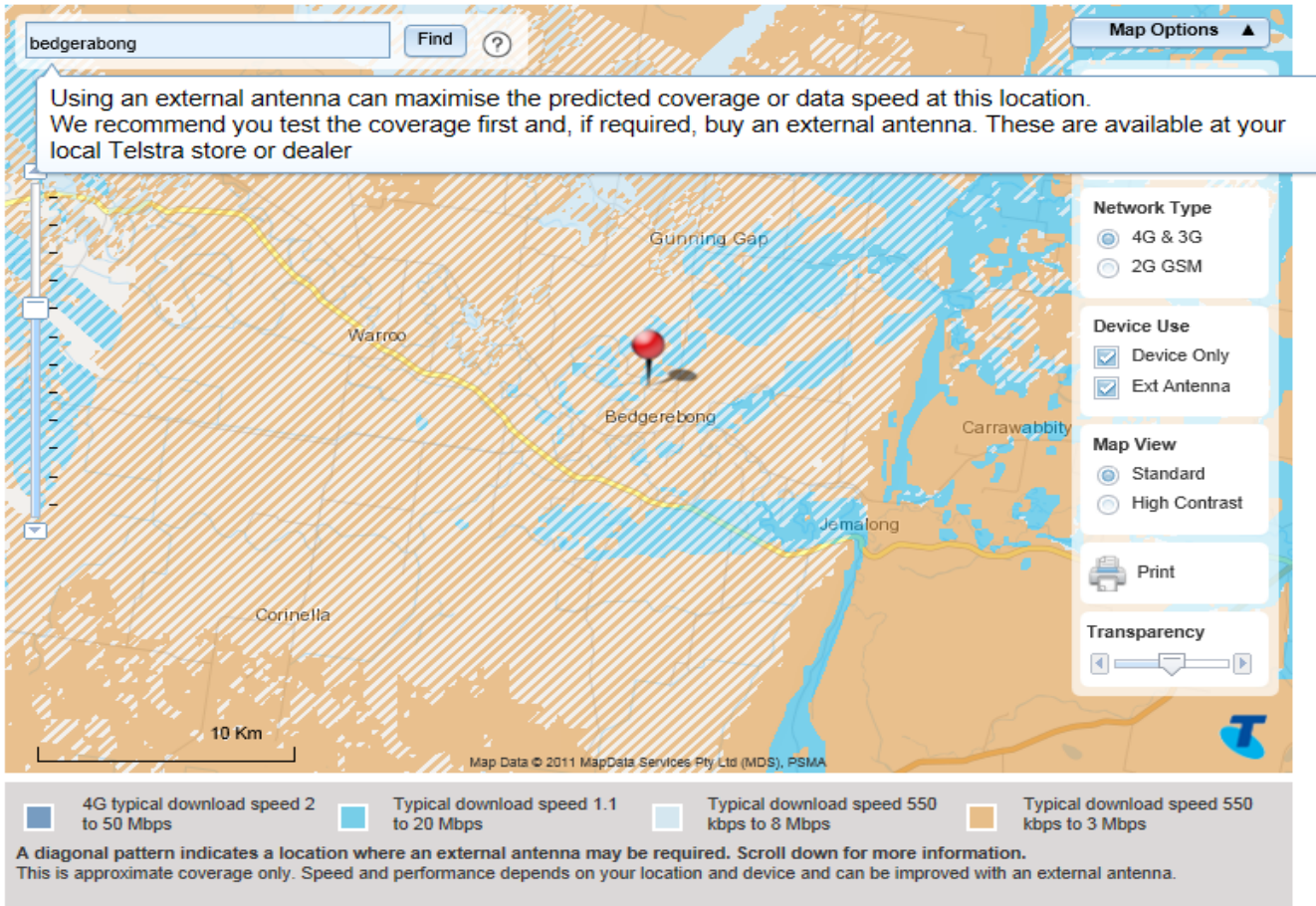
Optus:



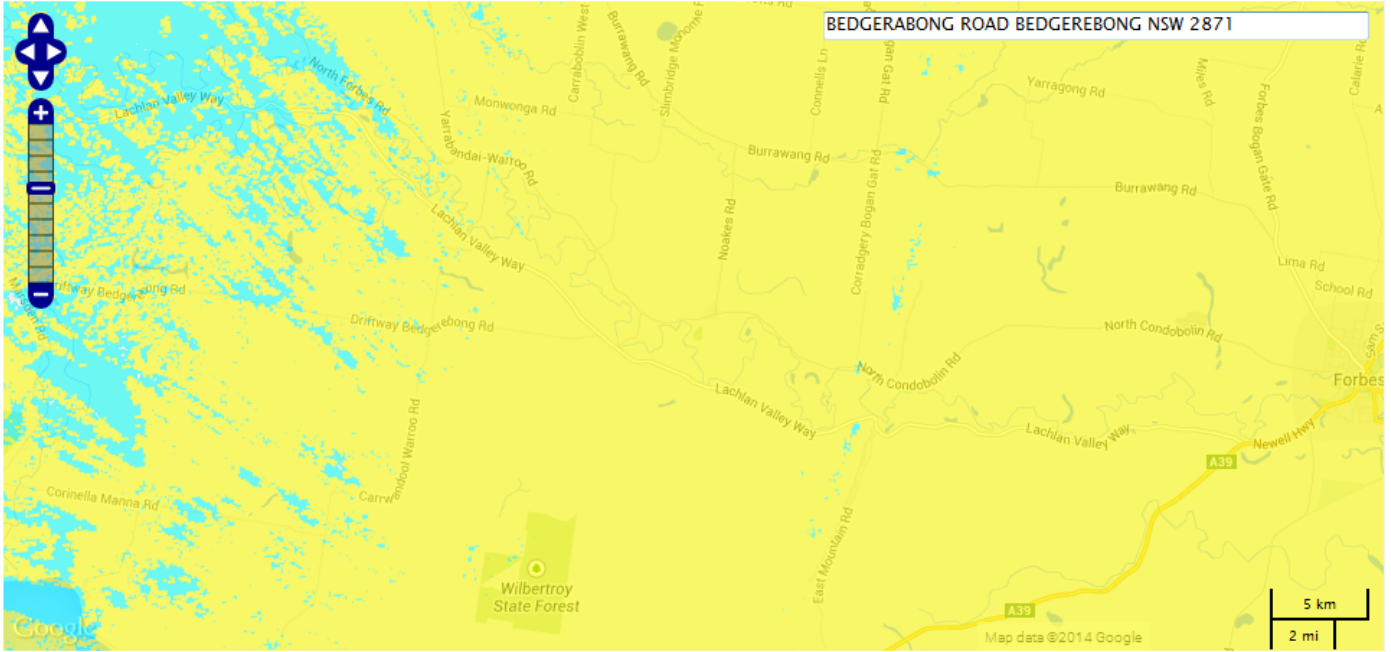


Bedgerabong and Waroo

Telstra



Simply select the type of device you are using and then enter your street, suburb or postcode



**Coverage:** ■ 3G Outdoor ■ 3G with Antenna ■ 3G Future Coverage

Coverage within the Optus Network is device dependent. To view coverage select the type of device you are using

- 4G Plus
- 4G
- 3G Dual band
- 3G Single band
- 2G

Planned Coverage Information

- 3 Months
- 6 Months

**Contrast:** 0%  100%

Tullamore

Optus

Simply select the type of device you are using and then enter your street, suburb or postcode

**Coverage:** 3G Outdoor 3G with Antenna 3G Future Coverage

Coverage within the Optus Network is device dependent. To view coverage select the type of device you are using

4G Plus  4G  3G Dual band  3G Single band  2G

Planned Coverage Information

3 Months  6 Months

**Contrast:** 0%  100%

Telstra

tullamore Find ?

**Map Options** ▲

**Service Selection**

Voice  Data

**Network Type**

Next G  2G GSM

**Device Use**

Device Only  Ext Antenna

**Map View**

Standard  High Contrast

Print

**Transparency**

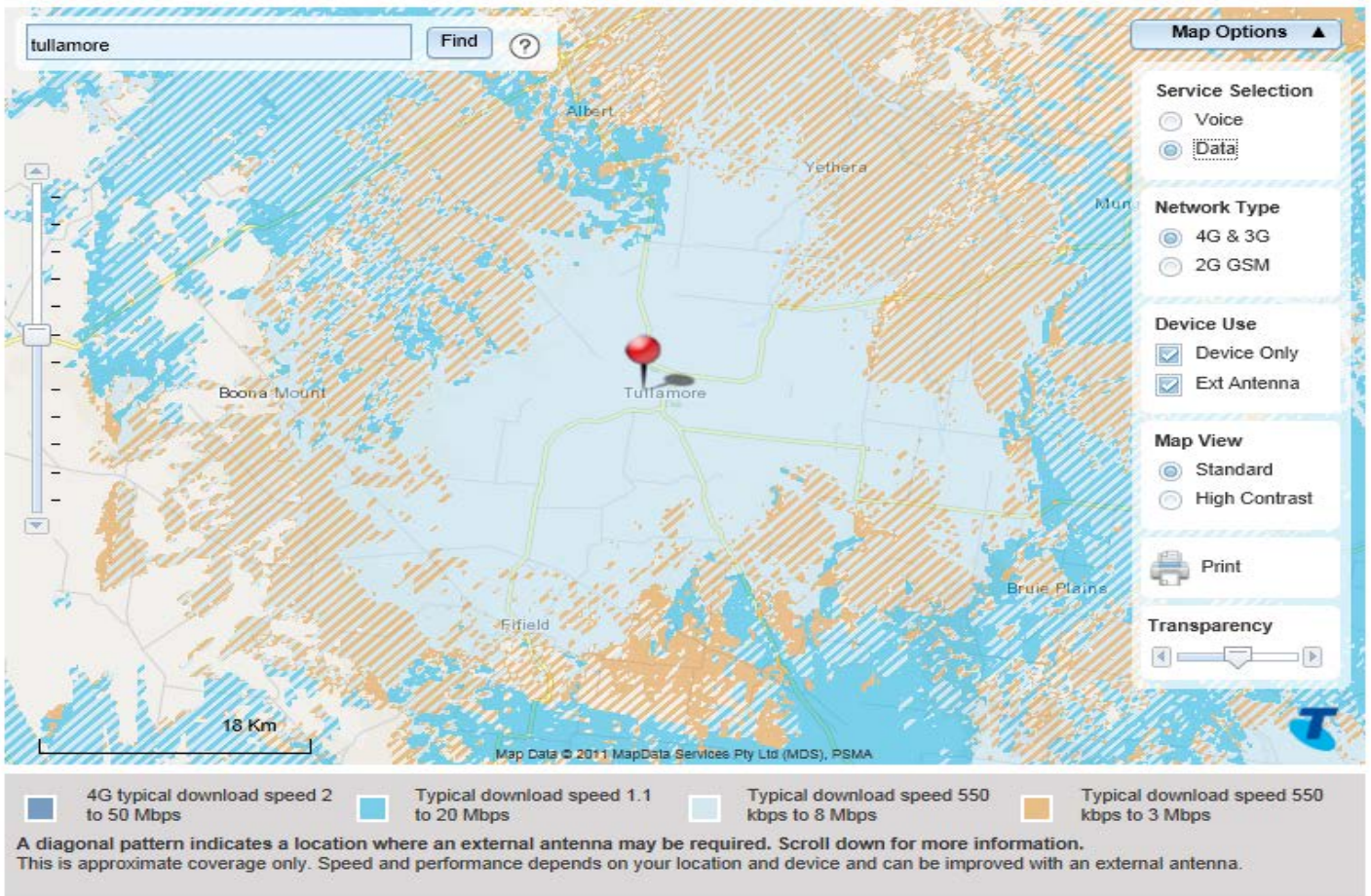
18 Km

Map Data © 2011 MapData Services Pty Ltd (MDS), PSMA

Voice  Voice with an external antenna

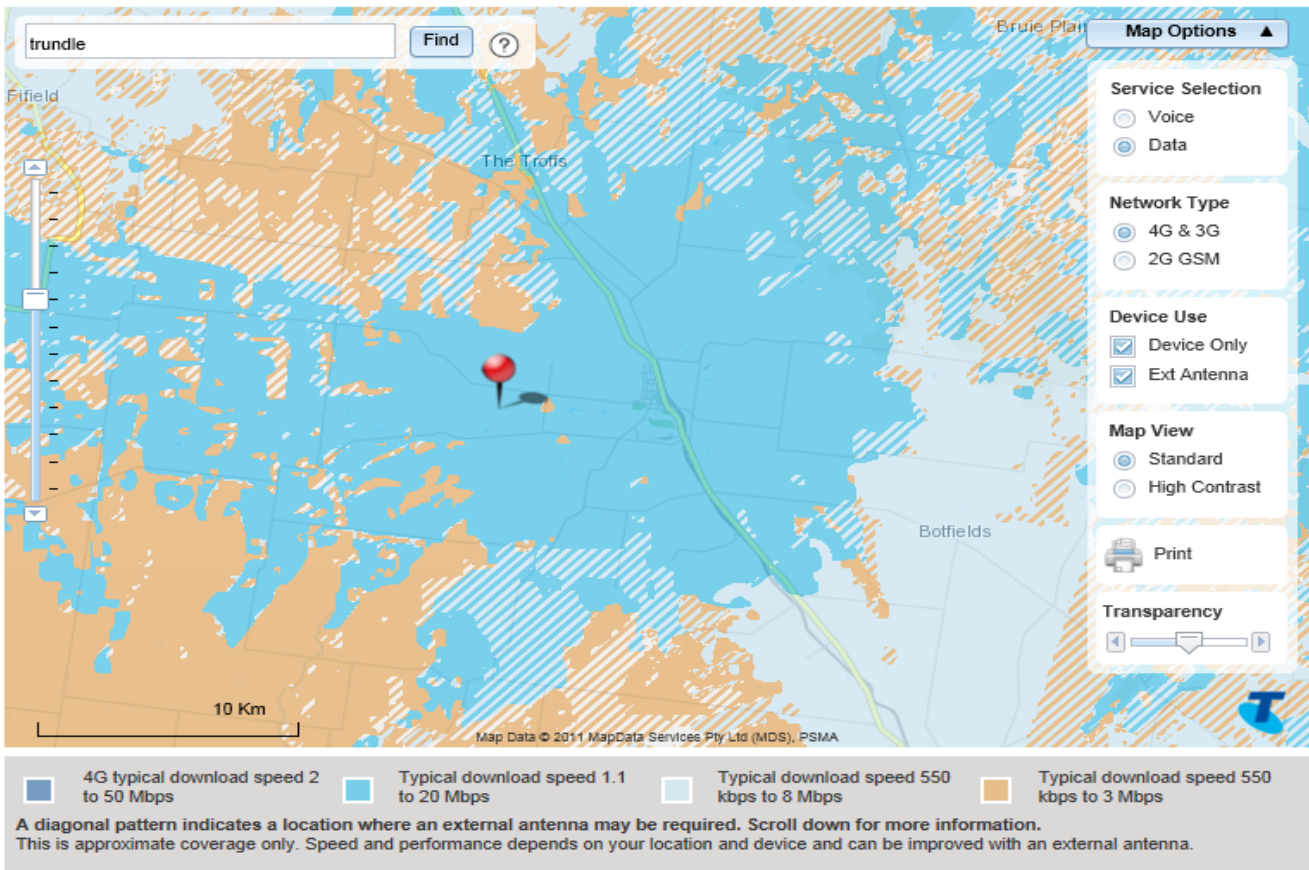
Where coverage is not shown, Telstra Mobile Satellite is recommended

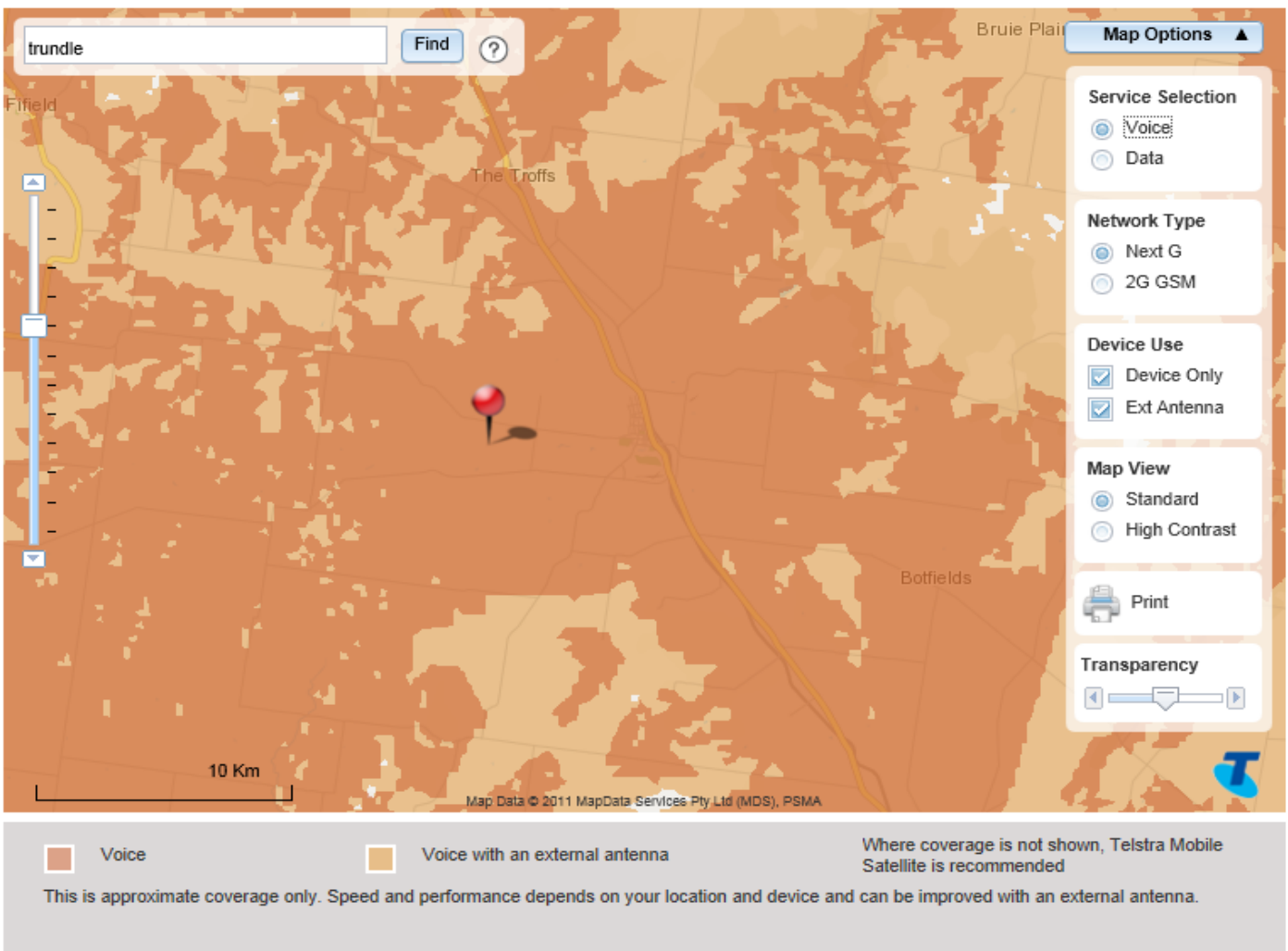
This is approximate coverage only. Speed and performance depends on your location and device and can be improved with an external antenna.



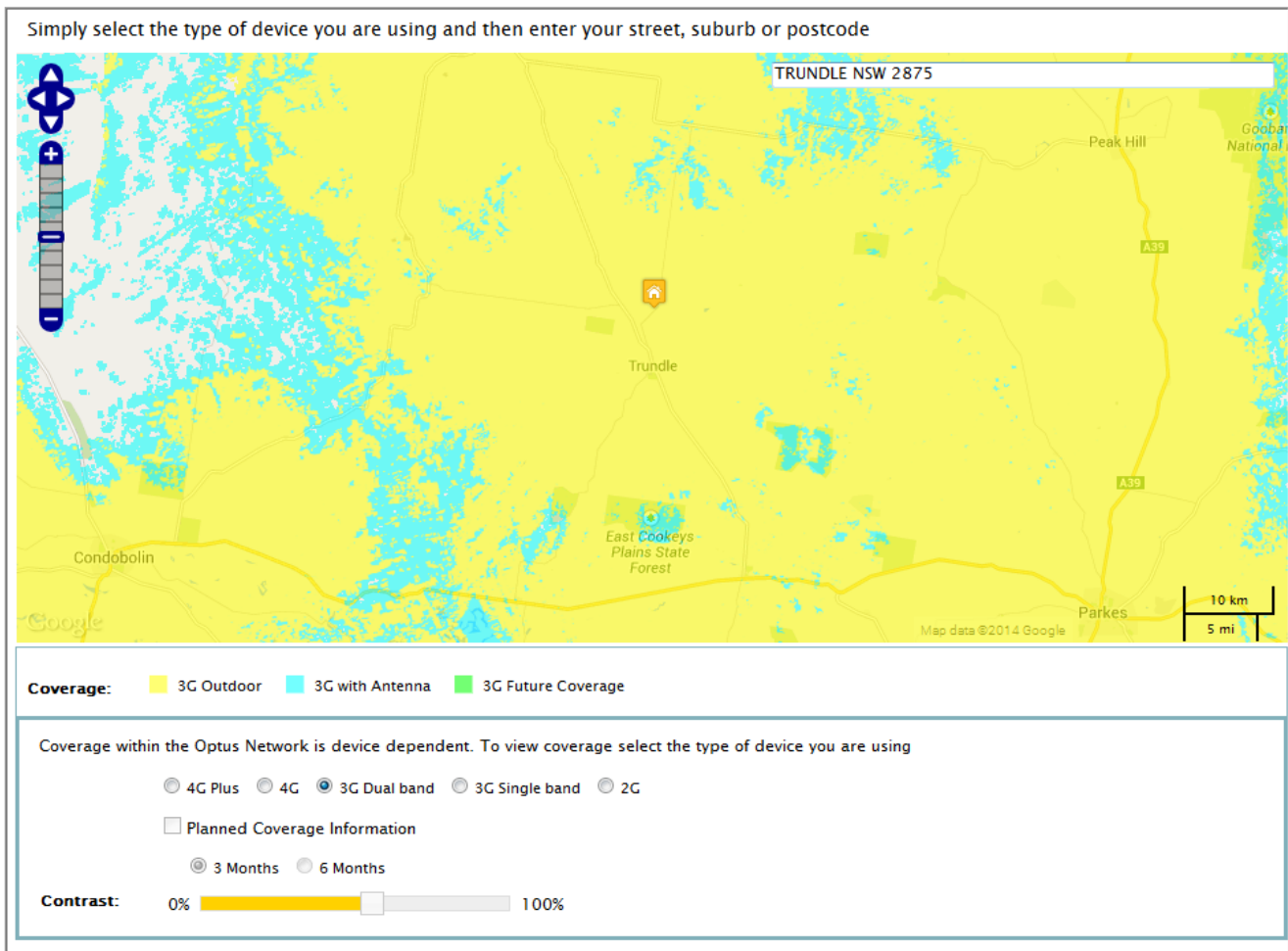
## Trundle

Telstra





## Optus



Simply select the type of device you are using and then enter your street, suburb or postcode

**Coverage:** 3G Outdoor 3G with Antenna 3G Future Coverage

Coverage within the Optus Network is device dependent. To view coverage select the type of device you are using

4G Plus  4G  3G Dual band  3G Single band  2G

Planned Coverage Information

3 Months  6 Months

**Contrast:** 0% 100%

bogan gate Find

**Map Options**

**Service Selection**  
 Voice  Data

**Network Type**  
 Next G  2G GSM

**Device Use**  
 Device Only  Ext Antenna

**Map View**  
 Standard  High Contrast

Print

**Transparency**

10 Km

**Coverage transparency**

Voice  Voice with an external antenna

Where coverage is not shown, Telstra Mobile Satellite is recommended

This is approximate coverage only. Speed and performance depends on your location and device and can be improved with an external antenna.



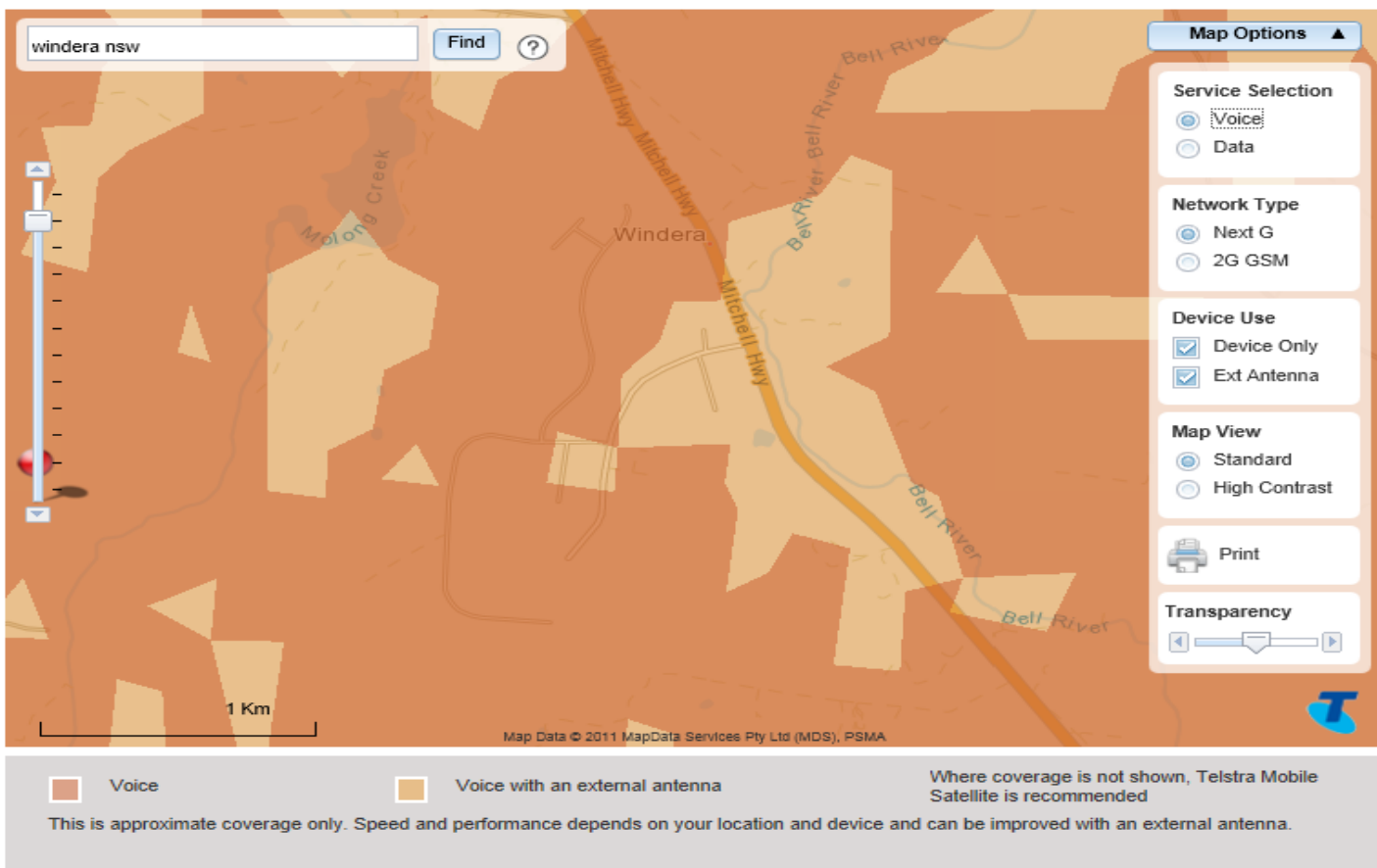
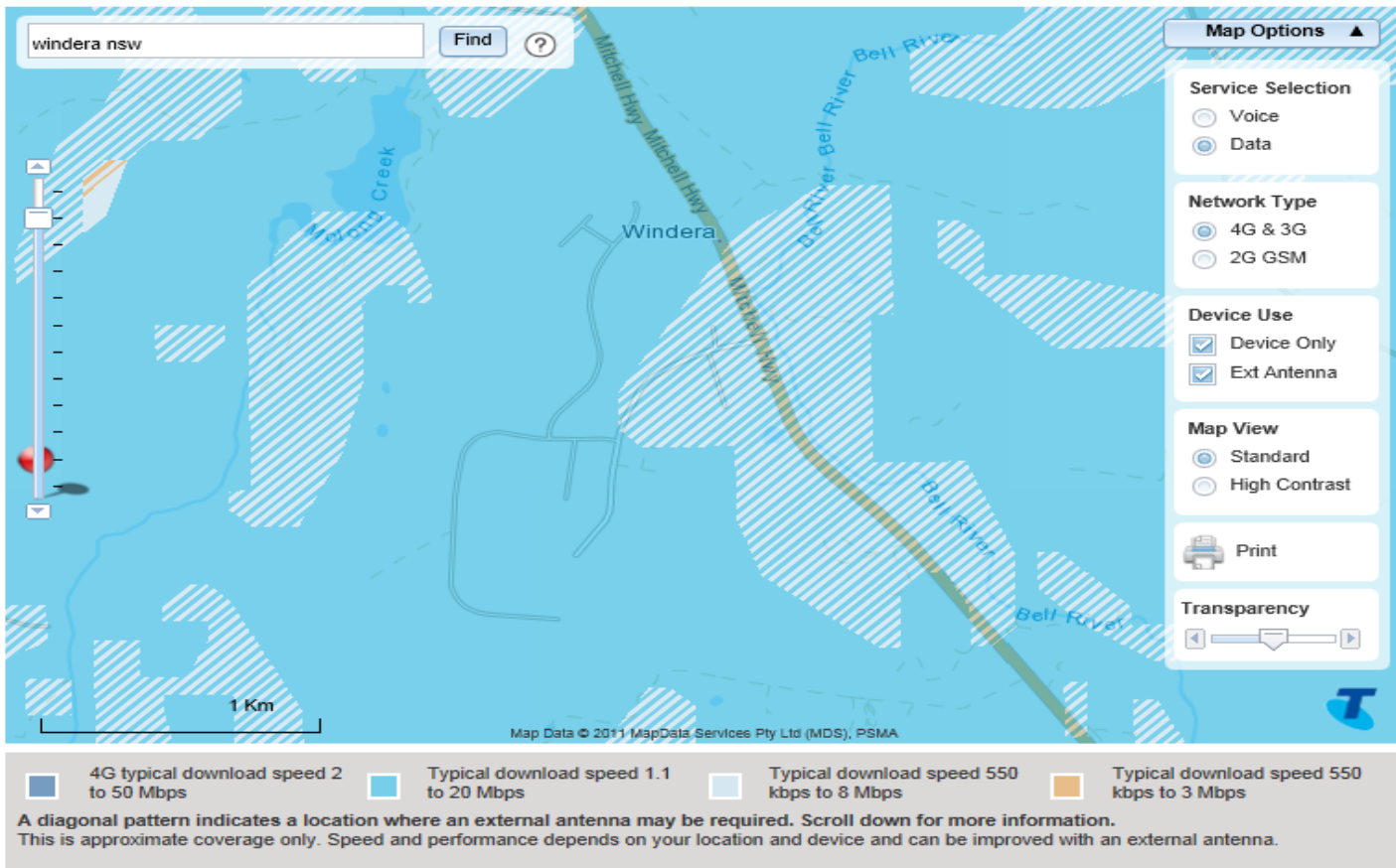


- 4G typical download speed 2 to 50 Mbps
- Typical download speed 1.1 to 20 Mbps
- Typical download speed 550 kbps to 8 Mbps
- Typical download speed 550 kbps to 3 Mbps

A diagonal pattern indicates a location where an external antenna may be required. Scroll down for more information. This is approximate coverage only. Speed and performance depends on your location and device and can be improved with an external antenna.

Windera Estate

Telstra



Simply select the type of device you are using and then enter your street, suburb or postcode

**Coverage:** ■ 3G Outdoor ■ 3G with Antenna ■ 3G Future Coverage

Coverage within the Optus Network is device dependent. To view coverage select the type of device you are using

4G Plus  4G  3G Dual band  3G Single band  2G

Planned Coverage Information

3 Months  6 Months

**Contrast:** 0%  100%