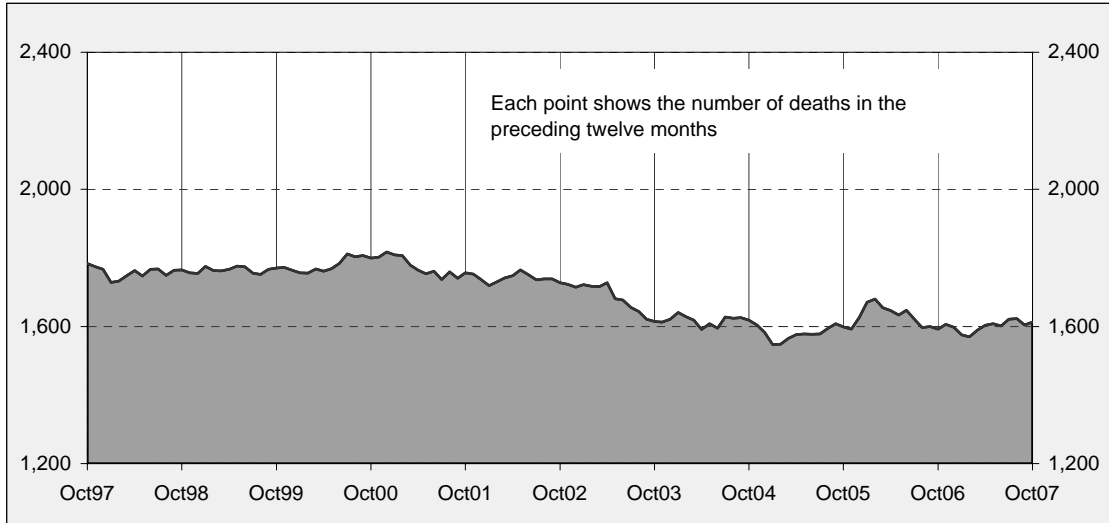




## Australian road deaths for 12 months to date - last 10 years



### Inquiries

For further information about data in this bulletin, contact:

Road Safety Research and Statistics  
Australian Transport Safety Bureau  
PO Box 967,  
Civic Square, ACT 2608  
Email: [research@atsb.gov.au](mailto:research@atsb.gov.au)  
Internet: [www.atsb.gov.au](http://www.atsb.gov.au)

### Data Sources

The data presented here are obtained from the following sources:

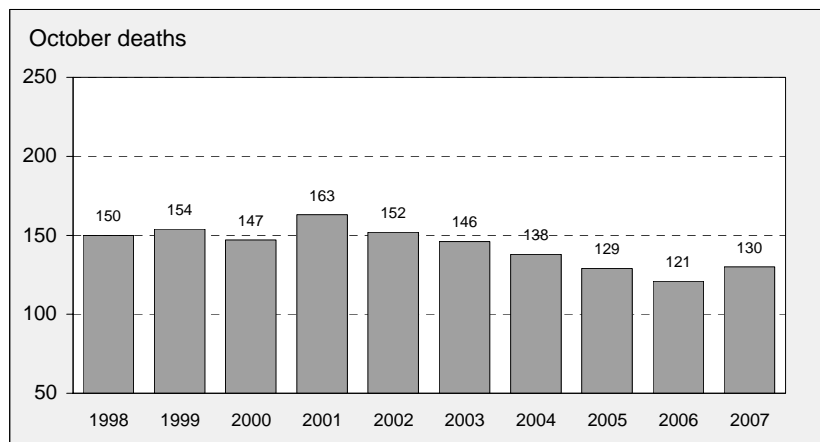
- Roads and Traffic Authority, NSW
- Vicroads
- Queensland Transport
- Department for Transport, Energy and Infrastructure, South Australia
- Western Australia Police
- Department of Infrastructure, Energy and Resources, Tasmania
- Department of Planning and Infrastructure, Northern Territory
- Territory and Municipal Services, ACT

### Note

Road death statistics for recent months are preliminary and subject to revision. They include any deaths occurring within 30 days of a crash stemming from injuries received in the crash.

The Australian Transport Safety Bureau is an operationally independent body within the Australian Government Department of Transport and Regional Services.

## Australian road deaths for October - last 10 years



## This month's key figures

There were a total of 130 road deaths in October 2007.  
- this is a 7.4% increase over the October 2006 figure.

There have been 1,321 road deaths in 2007 to the end of October.  
- this is a 1.1% increase over the same 10 month period in 2006.

# NUMBER OF ROAD CRASH DEATHS IN EACH STATE / TERRITORY

Road deaths by State/Territory for month, year to date, and twelve months - period ended October 2007 and period ended October 2006

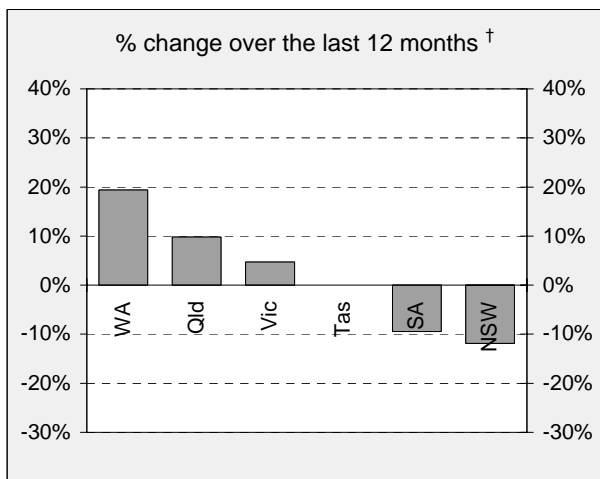
	NSW	Vic	Qld	SA	WA	Tas	NT	ACT	Australia
<b>Current month</b>									
Oct 2007	36	36	23	11	15	1	7	1	130
Oct 2006	42	20	29	4	17	2	5	2	121
% change	-14.3	80.0	-20.7	175.0	-11.8	-50.0	40.0	-50.0	7.4
<b>Year to date</b>									
Jan 2007 - Oct 2007	371	265	305	97	188	41	42	12	1,321
Jan 2006 - Oct 2006	422	267	270	99	163	41	35	9	1,306
% change	-12.1	-0.7	13.0	-2.0	15.3	0.0	20.0	33.3	1.1
<b>12-months to date</b>									
Nov 2006 - Oct 2007	445	335	370	115	228	55	49	16	1,613
Nov 2005 - Oct 2006	505	320	337	127	191	55	45	12	1,592
Difference	-60	15	33	-12	37	0	4	4	21
% change	-11.9	4.7	9.8	-9.4	19.4	0.0	8.9	33.3	1.3

## Average annual % change over 5 years<sup>a</sup>

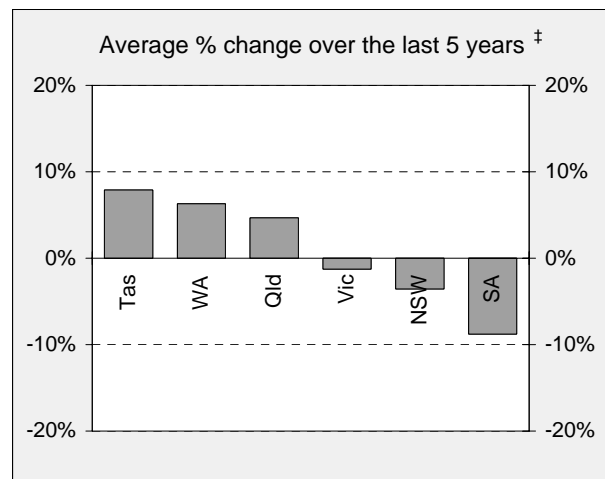
Nov 2002 to Oct 2007	-3.6	-1.2	4.7	-8.8	6.3	7.9	-1.3	14.3	-0.2
----------------------	------	------	-----	------	-----	-----	------	------	------

<sup>a</sup> Average annual percentage change based on the exponential trend for the last five 12 -month periods

## Percentage change in deaths in each State



<sup>†</sup> Percentage change between the 12-month periods of Nov 2005 - Oct 2006 and Nov 2006 - Oct 2007



<sup>‡</sup> Average annual percentage change based on the exponential trend for the last five 12-month periods

# NUMBER OF DEATHS IN EACH ROAD USER GROUP

Road deaths by road user group and gender for twelve months ended October 2007 and twelve months ended October 2006

	Drivers	Passengers	Pedestrians	Motor-cyclists <sup>a</sup>	Cyclists	All road users <sup>b</sup>
<b>Males</b>						
Nov 2006 - Oct 2007	634	171	114	226	38	1,183
Nov 2005 - Oct 2006	558	200	155	224	35	1,173
% change	13.6	-14.5	-26.5	0.9	8.6	0.9
<b>Females</b>						
Nov 2006 - Oct 2007	174	152	83	16	4	429
Nov 2005 - Oct 2006	170	147	78	13	7	415
% change	2.4	3.4	6.4	23.1	-42.9	3.4
<b>Persons<sup>c</sup></b>						
Nov 2006 - Oct 2007	809	323	197	242	42	1,613
Nov 2005 - Oct 2006	729	350	233	237	42	1,592
% change	11.0	-7.7	-15.5	2.1	0.0	1.3
<b>Average annual % change over 5 years<sup>d</sup></b>						
Nov 2002 to Oct 2007	1.2	-5.1	-3.1	5.8	6.1	-0.2

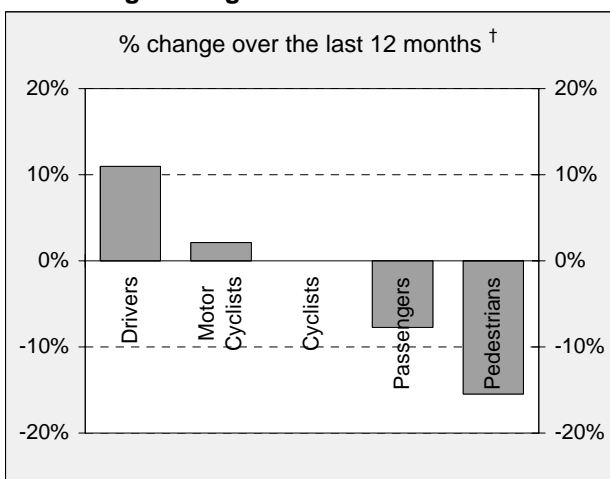
a Includes pillion passengers

b Includes road users not separately specified

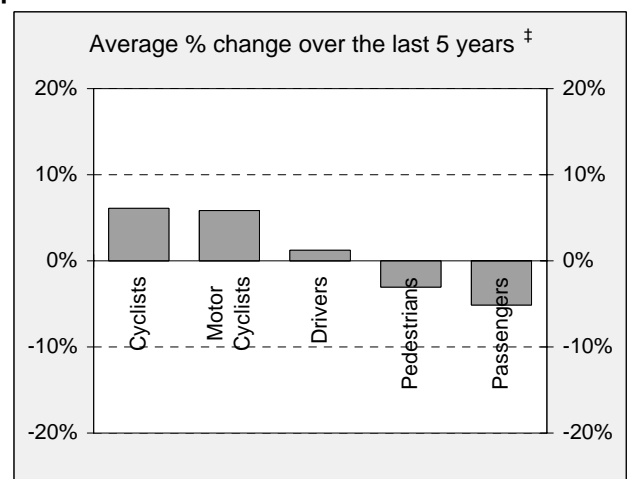
c Includes road users with unstated gender

d Average annual percentage change based on the exponential trend for the last five 12-month period.

## Percentage change in deaths in each road user group



† Percentage change between the 12-month periods of Nov 2005 - Oct 2006 and Nov 2006 - Oct 2007

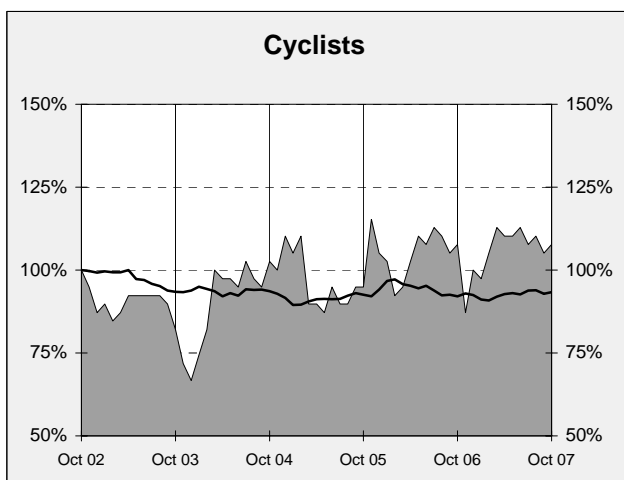
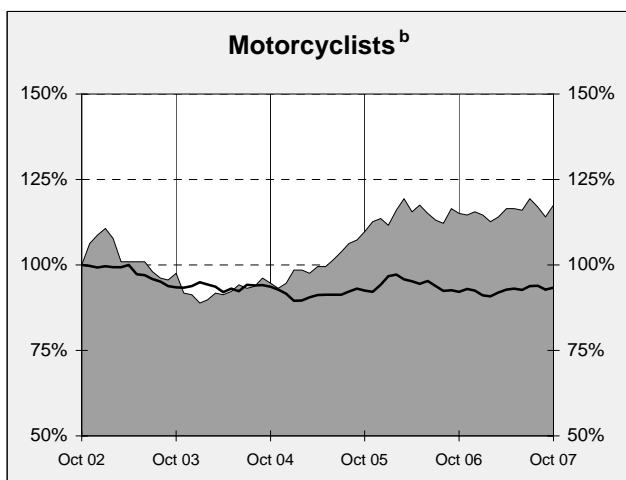
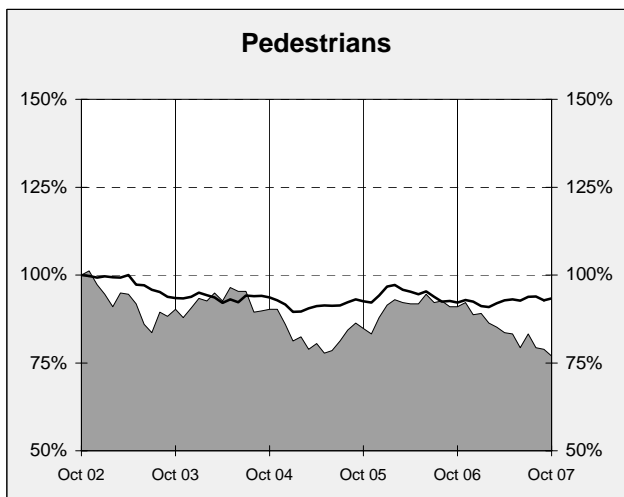
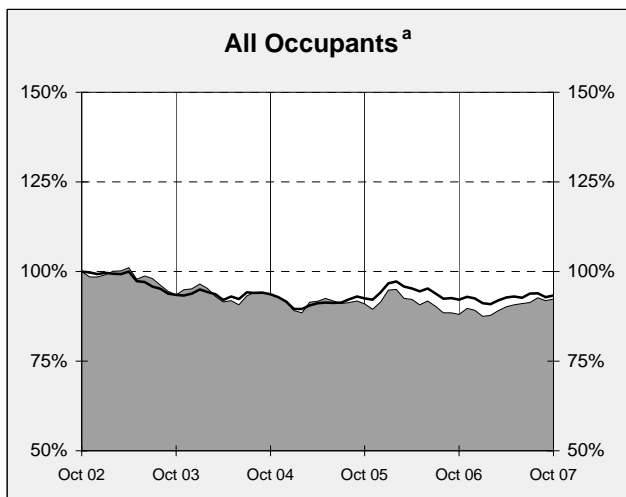
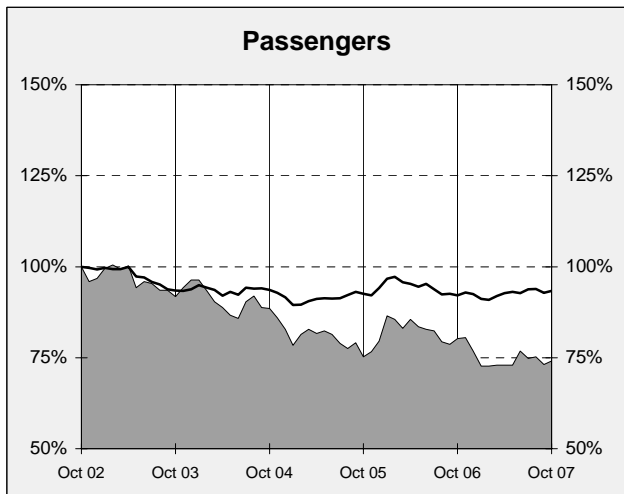
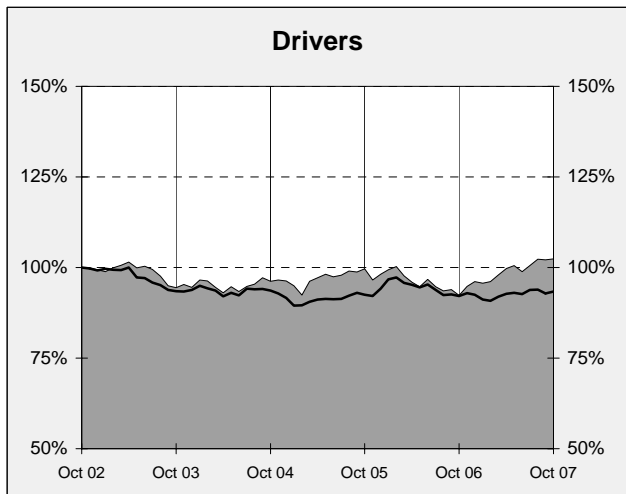
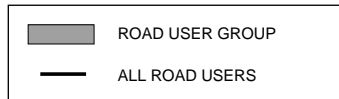


‡ Average annual percentage change based on the exponential trend for the last five 12-month periods

# DEATHS IN EACH ROAD USER GROUP - TRENDS

## Annual deaths in each road user group - last 5 years

The number shown at each month represents the number of deaths in the preceding 12 months expressed as a percentage of the number of deaths in the 12 months to October 2002.



a Comprises drivers and passengers

b Includes pillion passengers

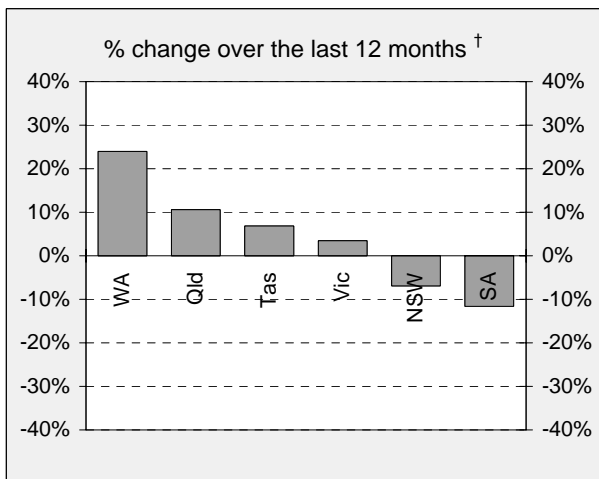
## NUMBER OF FATAL ROAD CRASHES IN EACH STATE / TERRITORY

Fatal crashes by State/Territory for month, year to date and twelve month-period ended October 2007 and period ended October 2006

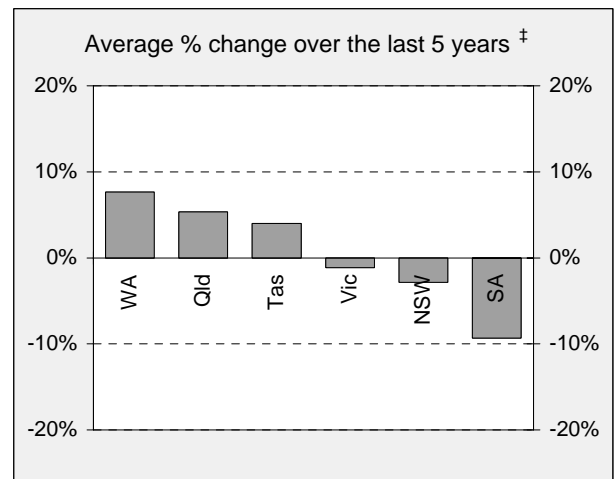
	NSW	Vic	Qld	SA	WA	Tas	NT	ACT	Australia
<b>Current month</b>									
Oct 2007	33	29	22	9	15	1	7	1	117
Oct 2006	38	19	29	4	17	2	4	2	115
% change	-13.2	52.6	-24.1	125.0	-11.8	-50.0	75.0	-50.0	1.7
<b>Year to date</b>									
Jan 2007 - Oct 2007	347	232	285	85	173	35	38	12	1207
Jan 2006 - Oct 2006	379	241	253	90	145	31	32	9	1180
% change	-8.4	-3.7	12.6	-5.6	19.3	12.9	18.8	33.3	2.3
<b>12 months to date</b>									
Nov 2006 - Oct 2007	417	300	345	99	212	47	45	15	1,480
Nov 2005 - Oct 2006	448	290	312	112	171	44	41	12	1,430
% change	-6.9	3.4	10.6	-11.6	24.0	6.8	9.8	25.0	3.5
<b>Average annual % change over 5 years<sup>a</sup></b>									
Nov 2002 to Oct 2007	-2.8	-1.2	5.3	-9.3	7.7	4.0	1.3	15.5	0.3

*a* Average annual percentage change based on the exponential trend for the last five 12-month periods

### Percentage change in fatal crashes in each State



† Percentage change between the 12-month periods of Nov 2005 - Oct 2006 and Nov 2006 - Oct 2007



‡ Average annual percentage change based on the exponential trend for the last five 12-month periods

## FATAL CRASHES INVOLVING TRUCKS OR BUSES

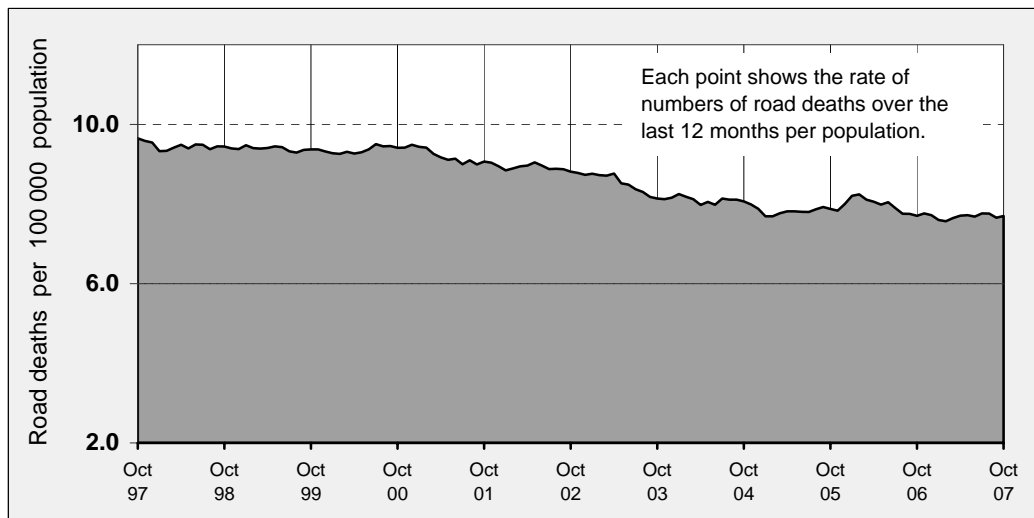
Analysis of fatal crashes involving heavy vehicles is now published in a separate quarterly bulletin on the ATSB website at [www.atsb.gov.au](http://www.atsb.gov.au).

## ROAD DEATH RATES

### Road deaths per 100 000 population

	NSW	Vic	Qld	SA	WA	Tas	NT	ACT	Australia
<b>12-months to date</b>									
Nov 2006 - Oct 2007	6.4	6.5	8.8	7.3	10.9	11.2	22.9	4.7	7.7
Nov 2005 - Oct 2006	7.4	6.3	8.3	8.1	9.3	11.2	21.4	3.6	7.7
<b>Calendar year</b>									
2006	7.3	6.6	8.2	7.5	9.9	11.2	19.9	3.9	7.7
2001	8.0	9.2	8.9	10.1	8.7	12.9	25.3	5.0	8.9

### Australian road deaths per year per 100 000 population - moving 12-monthly data



## CHARACTERISTICS OF FATAL CRASHES

Proportion (per cent) of fatal crashes by speed limit, crash type, time of day, and time of week.  
Two years ended October 2007 and two years ended October 2002

	Speed limit (km/h) <sup>a</sup>			Time of Day	
	Up to 60	65-95	100+	Day	Night <sup>b</sup>
Nov 2005 - Oct 2007	32.7%	21.7%	45.6%	56.4%	43.6%
Nov 2000 - Oct 2002	32.7%	20.9%	46.4%	55.8%	44.2%
	Crash Type			Time of week	
	Pedestrian crash	Other single veh. Crash	Other multiple veh. crash	Week day	Week-end <sup>c</sup>
Nov 2005 - Oct 2007	14.5%	46.9%	38.5%	58.4%	41.6%
Nov 2000 - Oct 2002	16.9%	43.1%	39.9%	60.2%	39.8%

<sup>a</sup> Excludes ACT

<sup>b</sup> 6:00 pm to 5:59 am

<sup>c</sup> 6:00 pm Friday to 5:59 am Monday

# ROAD DEATHS BY AGE, GENDER AND ROAD USER GROUP

## Road deaths by age and gender

	0-16 years	17-20 years	21-25 years	26-39 years	40-59 years	60+ years	All deaths <sup>a</sup>
<b>Males</b>							
Nov 2006 - Oct 2007	60	151	147	329	293	195	1,183
Nov 2005 - Oct 2006	76	171	170	325	246	183	1,173
% change	-21.1	-11.7	-13.5	1.2	19.1	6.6	0.9
<b>Females</b>							
Nov 2006 - Oct 2007	46	49	42	73	96	117	429
Nov 2005 - Oct 2006	53	44	42	73	106	97	415
% change	-13.2	11.4	0.0	0.0	-9.4	20.6	3.4
<b>Persons<sup>b</sup></b>							
Nov 2006 - Oct 2007	106	200	189	402	389	312	1,613
Nov 2005 - Oct 2006	133	215	212	398	352	280	1,592
% change	-20.3	-7.0	-10.8	1.0	10.5	11.4	1.3

a Includes road users with unstated age

b Includes road users with unstated gender

## Road deaths by age for each main road user group

	0-16 years	17-20 years	21-25 years	26-39 years	40-59 years	60+ years	All deaths <sup>a</sup>
<b>Occupants<sup>b</sup></b>							
Nov 2006 - Oct 2007	67	164	134	271	258	230	1,132
Nov 2005 - Oct 2006	89	173	150	258	232	177	1,079
% change	-24.7	-5.2	-10.7	5.0	11.2	29.9	4.9
<b>Motorcyclists<sup>c</sup></b>							
Nov 2006 - Oct 2007	10	21	39	86	68	15	242
Nov 2005 - Oct 2006	4	26	47	89	61	10	237
% change	150.0	-19.2	-17.0	-3.4	11.5	50.0	2.1
<b>Pedestrians</b>							
Nov 2006 - Oct 2007	21	13	15	35	47	63	197
Nov 2005 - Oct 2006	33	13	13	43	46	83	233
% change	-36.4	0.0	15.4	-18.6	2.2	-24.1	-15.5

a Includes road users with unstated age

b Comprises drivers and passengers

c Includes pillion passengers