



Australian Government
Australian Transport Safety Bureau

ISSN 1449-1168

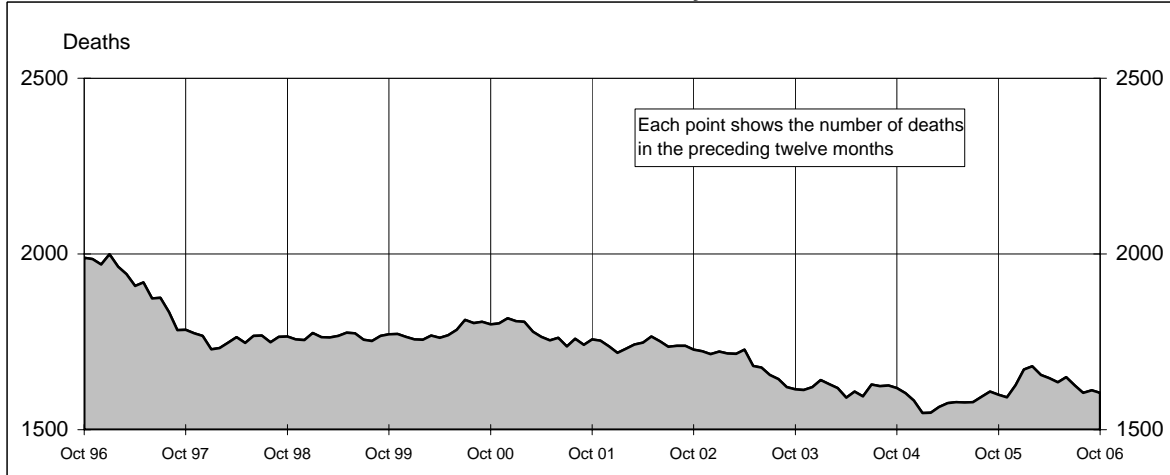
Road Deaths AUSTRALIA



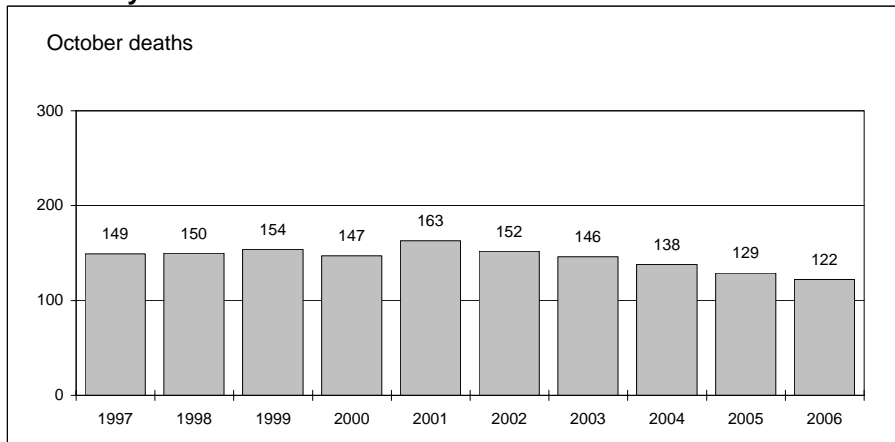
Monthly Bulletin

October 2006

Australian road deaths for 12 months to date - last 10 years



Australian road deaths for October - last 10 years



Inquiries

For further information about data in this bulletin, contact:

The Editor
Transport Safety Statistics Unit
Australian Transport Safety Bureau
PO Box 967,
Civic Square, ACT 2608

Email: stats@atsb.gov.au
Internet: www.atsb.gov.au

Data Sources

The data presented here are obtained from the following sources:

Roads and Traffic Authority, NSW
Vicroads
Queensland Transport
South Australian Police Department
Western Australian Police Service
Department of Infrastructure, Energy and Resources, Tasmania
Northern Territory Police,
Fire & Emergency Services
Department of Urban Services, ACT

Note

Road death statistics for recent months are preliminary and subject to revision. They include any deaths occurring within 30 days of a crash stemming from injuries received in the crash.

© Australian Government

This month's key figures

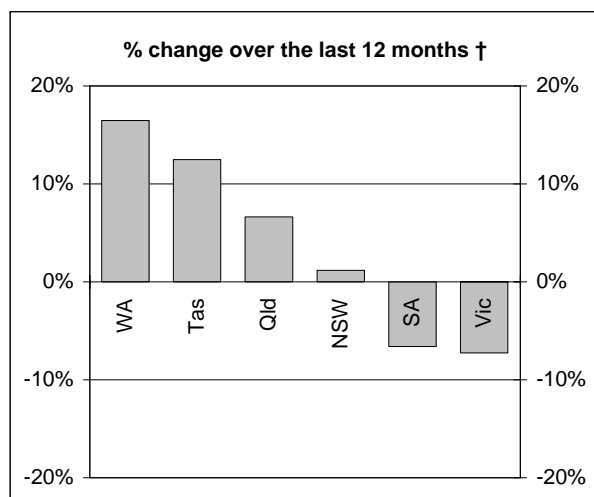
The total number of road deaths in October 2006 was 122
- this is a 5.4% decrease from the October 2005 figure.

The number of road deaths in 2006 to the end of October is 1,319
- this is a 1.6% decrease from the same 10 month period in 2005.

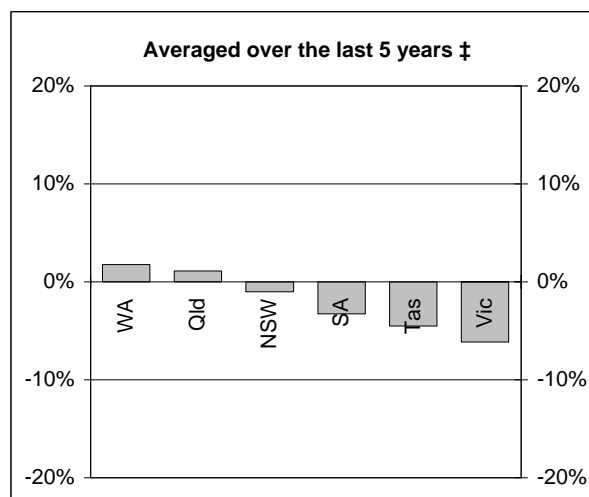
AUSTRALIAN GOVERNMENT DEPARTMENT OF TRANSPORT AND REGIONAL SERVICES

NUMBER OF ROAD CRASH DEATHS

Percentage change in road deaths in each State



† Percentage change between the 12-month periods of Nov 2004 - Oct 2005 and Nov 2005 - Oct 2006



‡ Average annual percentage change over each of the 12-month periods from Nov 2000 - Oct 2001 to Nov 2005 - Oct 2006

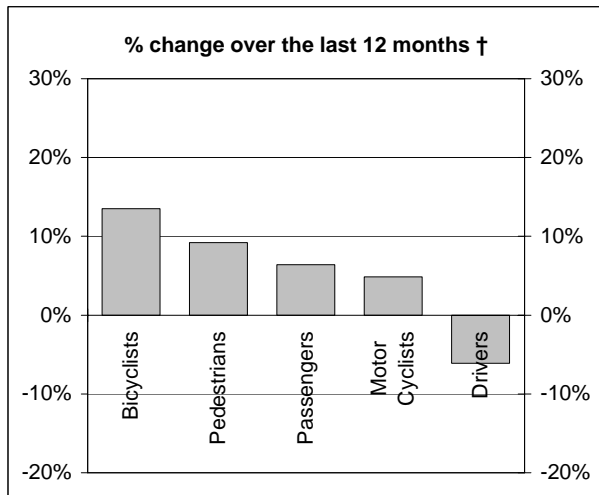
Road deaths by State/Territory for month, year to date, and twelve months - period ended October 2006 and period ended October 2005

	NSW	Vic	Qld	SA	WA	Tas	NT	ACT	Australia
Current month									
Oct 2006	43	20	29	4	17	2	5	2	122
Oct 2005	40	33	30	8	9	4	3	2	129
% change	7.5	-39.4	-3.3	-50.0	88.9	-50.0	66.7	0.0	-5.4
Year to date									
Jan 2006 - Oct 2006	435	267	271	99	163	40	35	9	1319
Jan 2005 - Oct 2005	425	293	263	120	135	37	45	23	1341
% change	2.4	-8.9	3.0	-17.5	20.7	8.1	-22.2	-60.9	-1.6
12-months to date									
Nov 2005 - Oct 2006	518	320	338	127	191	54	45	12	1605
Nov 2004 - Oct 2005	512	345	317	136	164	48	52	25	1599
Difference	6	-25	21	-9	27	6	-7	-13	6
% change	1.2	-7.2	6.6	-6.6	16.5	12.5	-13.5	-52.0	0.4
Ave annual % change (a)									
Oct 2001 to Oct 2006	-1.0	-6.1	1.1	-3.3	1.8	-4.5	-0.4	-3.0	-1.8

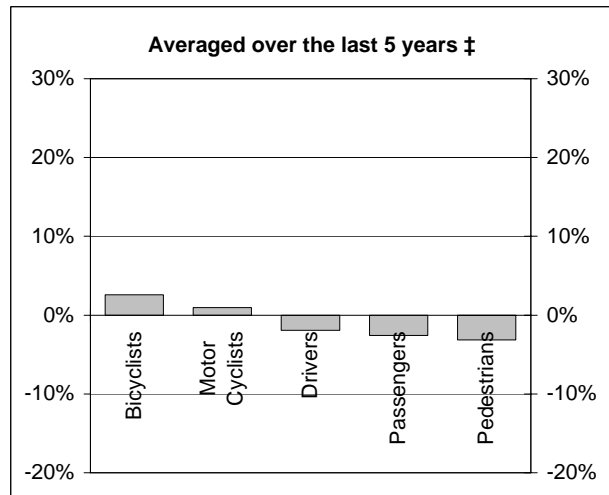
(a) This represents the average annual exponential change between the annual count of 5 years ago and the current annual count

DEATHS IN EACH ROAD USER GROUP

Percentage change in deaths in each road user group



† Percentage change between the 12-month periods of Nov 2004 - Oct 2005 and Nov 2005 - Oct 2006



‡ Average annual percentage change over each of the 12-month periods from Nov 2000 - Oct 2001 to Nov 2005 - Oct 2006

Road deaths by road user group and gender for twelve months ended October 2006 and twelve months ended October 2005

	Drivers	Passengers	Pedestrians	Motor cyclists (a)	Bicyclists	All road users (b)
Males						
Nov 2005 - Oct 2006	565	199	156	225	35	1181
Nov 2004 - Oct 2005	612	167	136	216	31	1165
% change	-7.7	19.2	14.7	4.2	12.9	1.4
Females						
Nov 2005 - Oct 2006	173	148	80	12	7	420
Nov 2004 - Oct 2005	175	161	81	10	6	434
% change	-1.1	-8.1	-1.2	20.0	16.7	-3.2
Persons (c)						
Nov 2005 - Oct 2006	739	349	237	237	42	1605
Nov 2004 - Oct 2005	787	328	217	226	37	1599
% change	-6.1	6.4	9.2	4.9	13.5	0.4
Ave annual % change (d)						
Oct 2001 to Oct 2006	-1.9	-2.6	-3.1	1.0	2.6	-1.8

(a) Includes pillion passengers

(b) Includes road users not separately specified

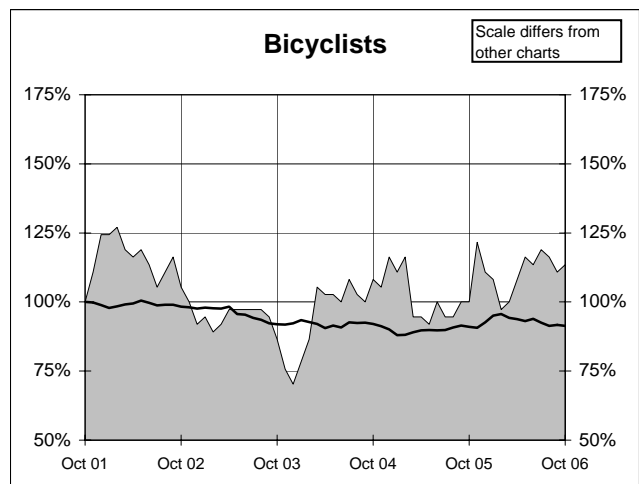
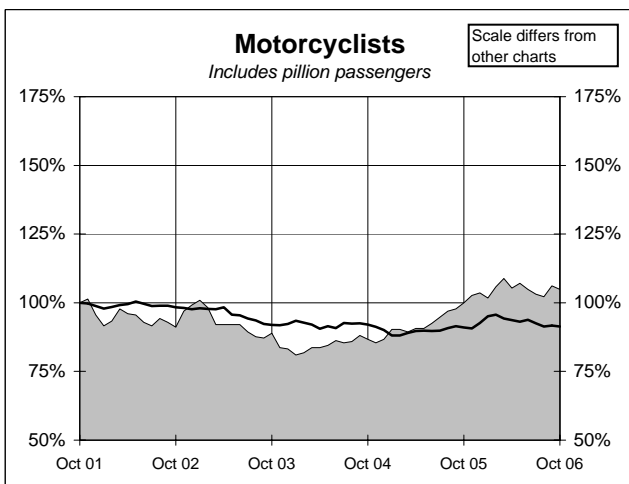
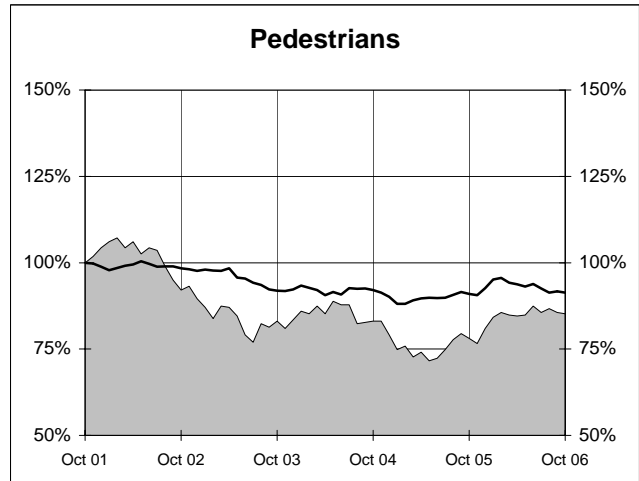
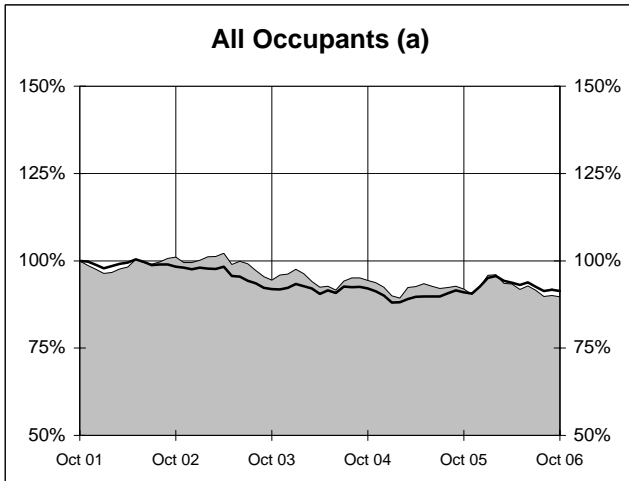
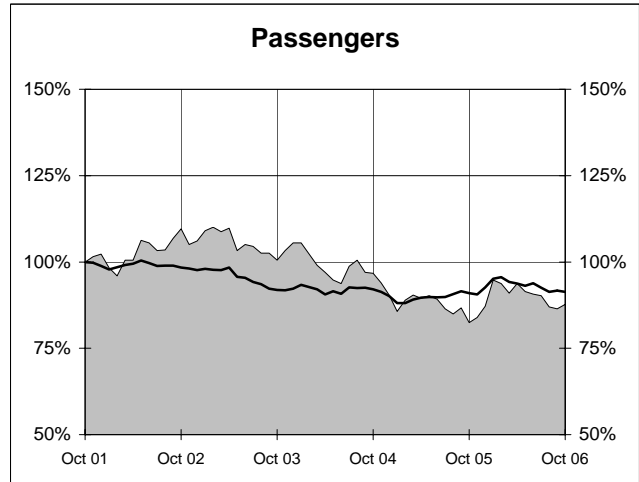
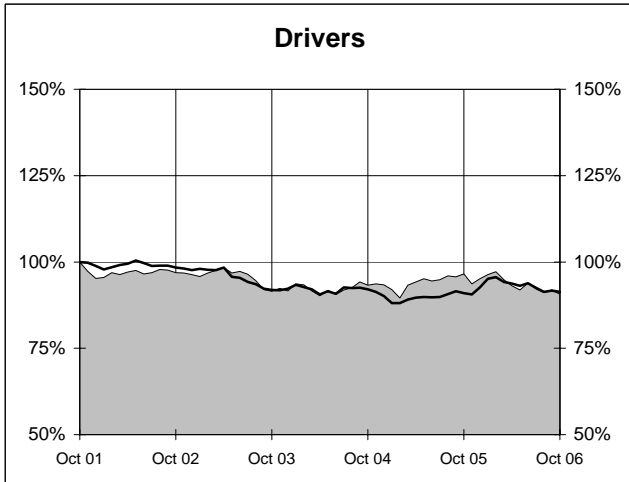
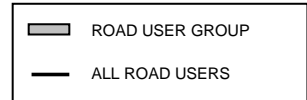
(c) Includes road users with unstated gender

(d) This represents the average annual exponential change between the annual count of 5 years ago and the current annual count

DEATHS IN EACH ROAD USER GROUP - TRENDS

Annual deaths in each road user group - last 5 years

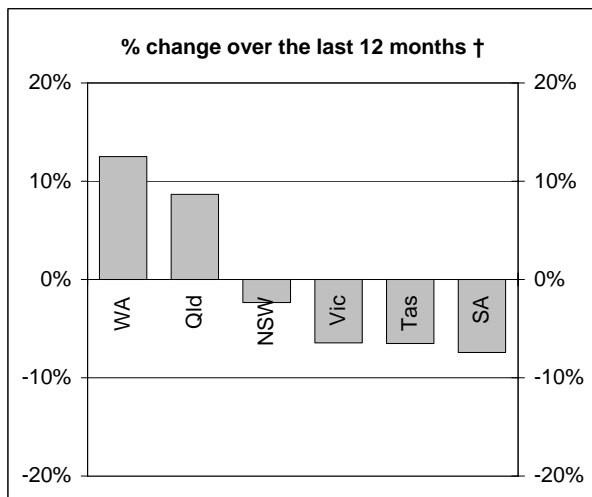
The number shown at each month represents the number of deaths in the preceding 12 months expressed as a percentage of the number of deaths in the 12 months to October 2001.



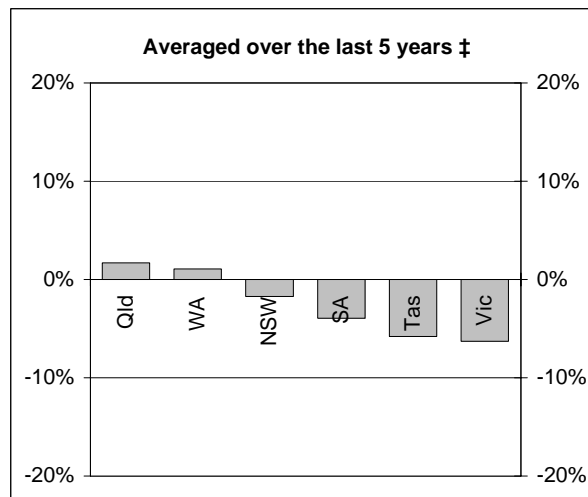
(a) Includes drivers and passengers

NUMBER OF FATAL ROAD CRASHES

Percentage change in fatal crashes in each State



† Percentage change between the 12-month periods of Nov 2004 - Oct 2005 and Nov 2005 - Oct 2006



‡ Average annual percentage change over each of the 12-month periods from Nov 2000 - Oct 2001 to Nov 2005 - Oct 2006

Fatal crashes by State/Territory for month, year to date and twelve months - period ended October 2006 and period ended October 2005

	NSW	Vic	Qld	SA	WA	Tas	NT	ACT	Australia
Current month									
Oct 2006	39	19	29	4	17	2	4	2	116
Oct 2005	38	32	28	8	9	4	3	2	124
% change	2.6	-40.6	3.6	-50.0	88.9	-50.0	33.3	0.0	-6.5
Year to date									
Jan 2006 - Oct 2006	392	241	254	90	145	30	32	9	1193
Jan 2005 - Oct 2005	390	265	237	105	125	36	42	22	1222
% change	0.5	-9.1	7.2	-14.3	16.0	-16.7	-23.8	-59.1	-2.4
12 months to date									
Nov 2005 - Oct 2006	461	290	313	112	171	43	41	12	1443
Nov 2004 - Oct 2005	472	310	288	121	152	46	48	24	1461
% change	-2.3	-6.5	8.7	-7.4	12.5	-6.5	-14.6	-50.0	-1.2
Ave annual % change (a)									
Oct 2001 to Oct 2006	-1.7	-6.3	1.7	-3.9	1.1	-5.8	0.0	-3.0	-2.1

(a) This represents the average annual exponential change between the annual count of 5 years ago and the current annual count

FATAL CRASHES INVOLVING TRUCKS AND BUSES

Fatal crashes and deaths involving articulated trucks and buses -
twelve months ended October 2006 and twelve months ended October 2005

	NSW	Vic	Qld	SA	WA	Tas	NT	ACT	Australia
--	-----	-----	-----	----	----	-----	----	-----	-----------

FATAL CRASHES INVOLVING ARTICULATED TRUCKS

Number of crashes

Nov 2005 - Oct 2006	57	N/A	34	9	10	8	4	0	
Nov 2004 - Oct 2005	48	31	23	16	9	3	0	0	

Number of deaths

Nov 2005 - Oct 2006	70	N/A	43	9	11	10	4	0	
Nov 2004 - Oct 2005	53	35	25	18	11	3	0	0	

Note: Data on heavy rigid trucks not currently available

FATAL CRASHES INVOLVING BUSES

Number of crashes

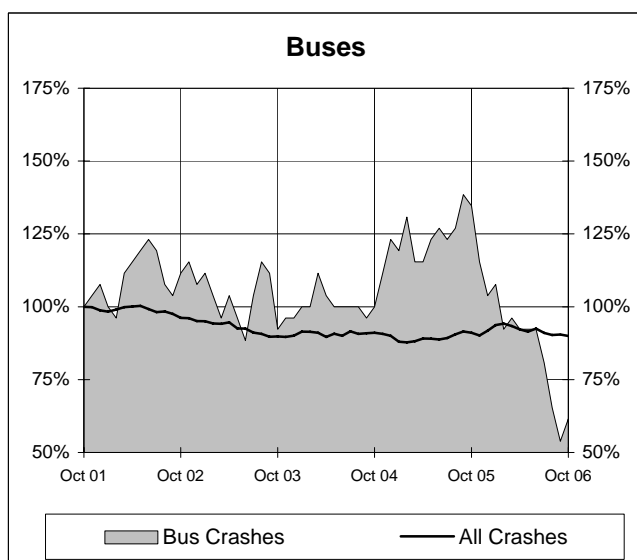
Nov 2005 - Oct 2006	7	3	4	0	1	1	0	0	16
Nov 2004 - Oct 2005	21	5	8	0	1	0	0	0	35
									(-54.3%)

Number of deaths

Nov 2005 - Oct 2006	7	4	4	0	1	1	0	0	17
Nov 2004 - Oct 2005	27	5	10	0	1	0	0	0	43
									(-60.5%)

Annual count of fatal crashes involving buses - last 5 years

The number shown at each month represents the number of fatal crashes in the preceding 12 months expressed as a percentage of the number of fatal crashes in the 12 months to October 2001.



CHARACTERISTICS OF FATAL CRASHES

Proportion (per cent) of fatal crashes by speed limit, crash type, time of day, and time of week - two years ended October 2006 and two years ended October 2001

	<i>Speed limit (km/h) (a)</i>			<i>Time of Day</i>	
	<i>Up to 60</i>	<i>65-95</i>	<i>100+</i>	<i>Day time</i>	<i>Night-time (b)</i>
<i>Nov 2004 - Oct 2006</i>	32.7	22.6	44.7	55.2	44.8
<i>Nov 1999 - Oct 2001</i>	33.4	21.2	45.5	55.8	44.2

	<i>Crash Type</i>			<i>Time of week</i>	
	<i>Pedestrian crash</i>	<i>Other single veh. crash</i>	<i>Other multiple veh. crash</i>	<i>Week day</i>	<i>Week-end (c)</i>
<i>Nov 2004 - Oct 2006</i>	15.3	45.3	39.4	57.7	42.3
<i>Nov 1999 - Oct 2001</i>	18.1	40.8	41.1	60.6	39.4

(a) Excludes ACT

(b) 6:00 pm to 5:59 am

(c) 6:00 pm Friday to 5:59 am Monday