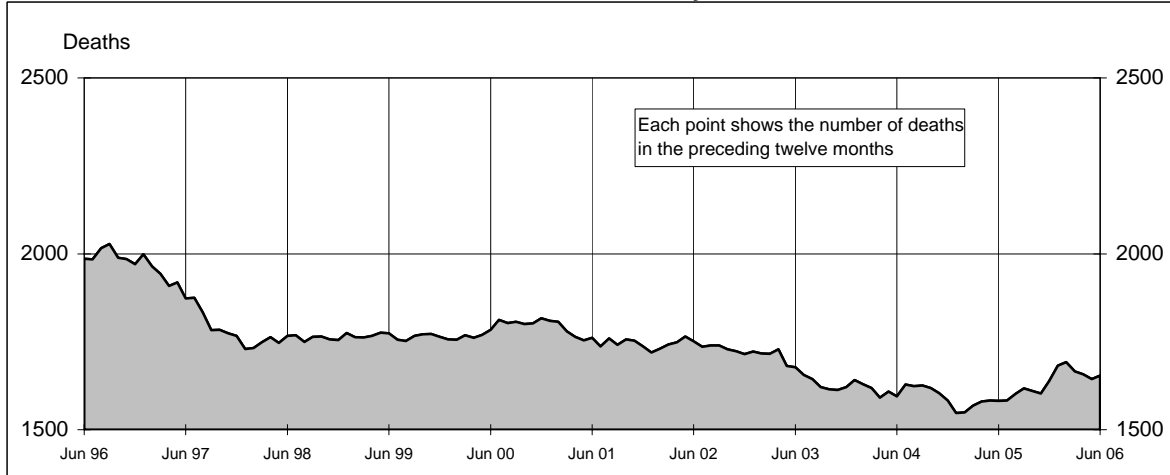
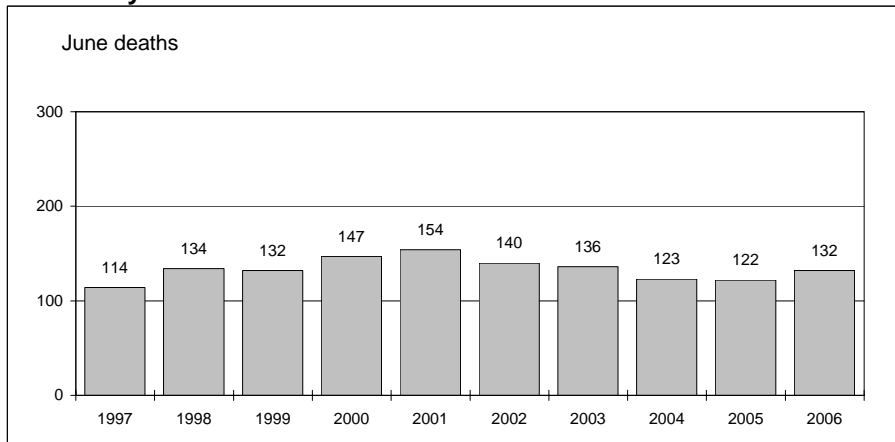




Australian road deaths for 12 months to date - last 10 years



Australian road deaths for June - last 10 years



Inquiries

For further information about data in this bulletin, contact:

The Editor
Transport Safety Statistics Unit
Australian Transport Safety Bureau
PO Box 967,
Civic Square, ACT 2608
Email: stats@atsb.gov.au
Internet: www.atsb.gov.au

Data Sources

The data presented here are obtained from the following sources:

Roads and Traffic Authority, NSW
Vicroads
Queensland Transport
South Australian Police Department
Western Australian Police Service
Department of Infrastructure, Energy and Resources, Tasmania
Northern Territory Police,
Fire & Emergency Services
Department of Urban Services, ACT

Note

Road death statistics for recent months are preliminary and subject to revision. They include any deaths occurring within 30 days of a crash stemming from injuries received in the crash.

© Australian Government

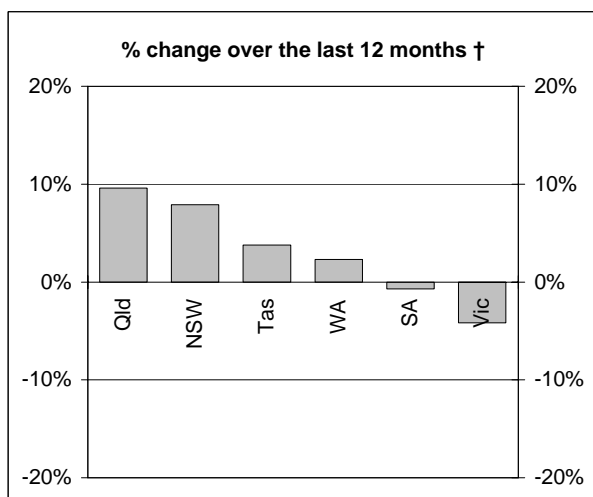
This month's key figures

The total number of road deaths in June 2006 was 132
- this is a 8.2% increase over the June 2005 figure.

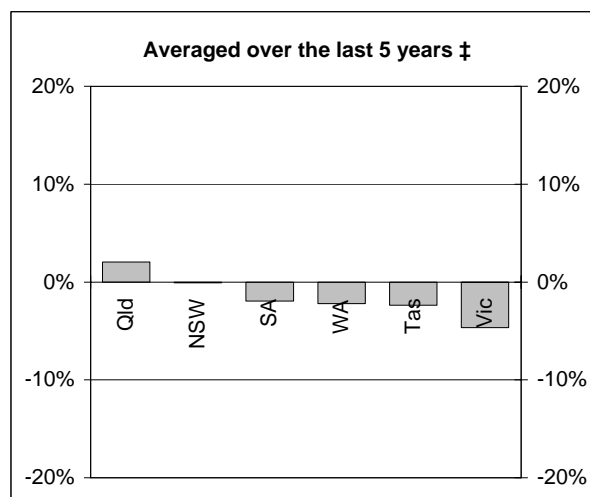
The number of road deaths in 2006 to the end of June is 806
- this is a 2.0% increase over the same 6 month period in 2005.

NUMBER OF ROAD CRASH DEATHS

Percentage change in road deaths in each State



† Percentage change between the 12-month periods of Jul 2004 - Jun 2005 and Jul 2005 - Jun 2006



‡ Average annual percentage change over each of the 12-month periods from Jul 2000 - Jun 2001 to Jul 2005 - Jun 2006

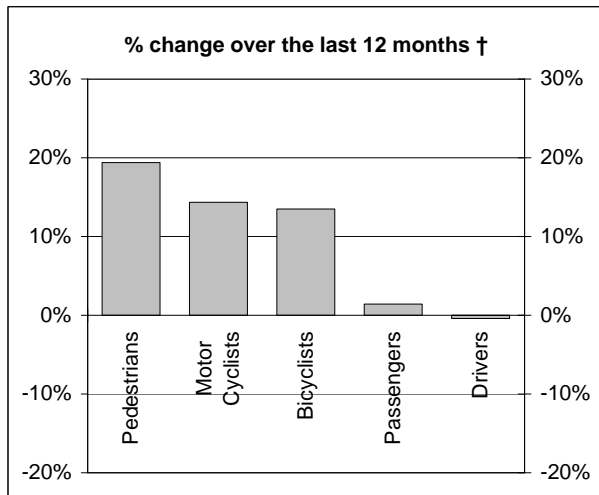
Road deaths by State/Territory for month, year to date, and twelve months - period ended June 2006 and period ended June 2005

	NSW	Vic	Qld	SA	WA	Tas	NT	ACT	Australia
Current month									
Jun 2006	42	21	27	15	17	6	3	1	132
Jun 2005	40	23	29	7	7	9	7	0	122
% change	5.0	-8.7	-6.9	114.3	142.9	-33.3	-57.1	-	8.2
Year to date									
Jan 2006 - Jun 2006	285	155	156	69	94	29	14	4	806
Jan 2005 - Jun 2005	255	181	144	73	79	25	22	11	790
% change	11.8	-14.4	8.3	-5.5	19.0	16.0	-36.4	-63.6	2.0
12-months to date									
Jul 2005 - Jun 2006	547	322	342	144	178	55	47	19	1654
Jul 2004 - Jun 2005	507	336	312	145	174	53	40	15	1582
Difference	40	-14	30	-1	4	2	7	4	72
% change	7.9	-4.2	9.6	-0.7	2.3	3.8	17.5	26.7	4.6
Ave annual % change (a)									
Jun 2001 to Jun 2006	-0.1	-4.7	2.1	-2.0	-2.2	-2.4	-2.7	-1.0	-1.2

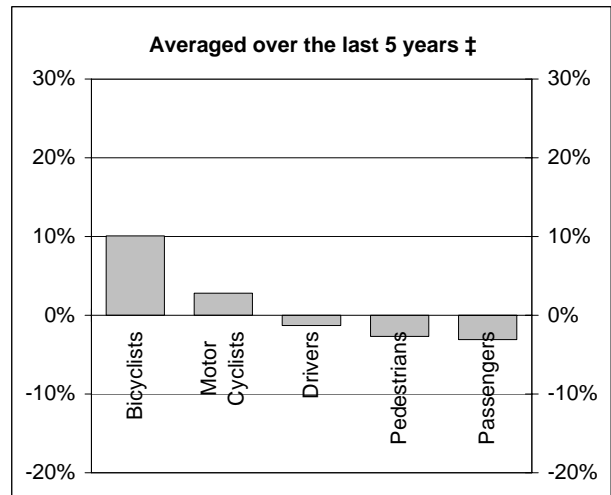
(a) This represents the average annual exponential change between the annual count of 5 years ago and the current annual count

DEATHS IN EACH ROAD USER GROUP

Percentage change in deaths in each road user group



† Percentage change between the 12-month periods of Jul 2004 - Jun 2005 and Jul 2005 - Jun 2006



‡ Average annual percentage change over each of the 12-month periods from Jul 2000 - Jun 2001 to Jul 2005 - Jun 2006

Road deaths by road user group and gender for twelve months ended June 2006 and twelve months ended June 2005

	Drivers	Passengers	Pedestrians	Motor cyclists (a)	Bicyclists	All road users (b)
Males						
Jul 2005 - Jun 2006	588	198	147	229	34	1197
Jul 2004 - Jun 2005	604	187	127	195	32	1149
% change	-2.6	5.9	15.7	17.4	6.3	4.2
Females						
Jul 2005 - Jun 2006	183	160	92	10	8	453
Jul 2004 - Jun 2005	171	168	74	14	5	433
% change	7.0	-4.8	24.3	-28.6	60.0	4.6
Persons (c)						
Jul 2005 - Jun 2006	772	360	240	239	42	1654
Jul 2004 - Jun 2005	775	355	201	209	37	1582
% change	-0.4	1.4	19.4	14.4	13.5	4.6
Ave annual % change (d)						
Jun 2001 to Jun 2006	-1.3	-3.1	-2.7	2.8	10.1	-1.2

(a) Includes pillion passengers

(b) Includes road users not separately specified

(c) Includes road users with unstated gender

(d) This represents the average annual exponential change between the annual count of 5 years ago and the current annual count

DEATHS IN EACH ROAD USER GROUP - QUARTERLY REPORT

Road deaths by road user group and State/Territory for twelve months ended June 2006 and twelve months ended June 2005

	<i>NSW</i>	<i>Vic</i>	<i>Qld</i>	<i>SA</i>	<i>WA</i>	<i>Tas</i>	<i>NT</i>	<i>ACT</i>	Australia
Drivers									
<i>Jul 2005 - Jun 2006</i>	260	144	159	73	84	27	18	7	772
<i>Jul 2004 - Jun 2005</i>	248	170	145	79	89	24	16	4	775
<i>% change</i>	4.8	-15.3	9.7	-7.6	-5.6	12.5	12.5	-	-0.4
<i>Ave annual % change (a)</i>									
<i>Jun 2001 to Jun 2006</i>	0.8	-5.7	0.4	-3.4	-0.5	-0.7	3.7	-	-1.3
Passengers									
<i>Jul 2005 - Jun 2006</i>	118	64	71	32	43	18	10	4	360
<i>Jul 2004 - Jun 2005</i>	102	81	66	35	41	14	16	0	355
<i>% change</i>	15.7	-21.0	7.6	-8.6	4.9	28.6	-37.5	-	1.4
<i>Ave annual % change (a)</i>									
<i>Jun 2001 to Jun 2006</i>	-2.5	-7.6	0.3	0.6	-3.7	1.1	-11.1	-	-3.1
Pedestrians									
<i>Jul 2005 - Jun 2006</i>	92	57	44	12	21	1	11	2	240
<i>Jul 2004 - Jun 2005</i>	81	43	33	11	22	3	4	4	201
<i>% change</i>	13.6	32.6	33.3	9.1	-4.5	-66.7	175.0	-	19.4
<i>Ave annual % change (a)</i>									
<i>Jun 2001 to Jun 2006</i>	-0.6	-1.3	0.5	-12.9	-5.6	-34.0	0.0	-	-2.7
Motor cyclists (b)									
<i>Jul 2005 - Jun 2006</i>	64	48	61	21	26	7	6	6	239
<i>Jul 2004 - Jun 2005</i>	65	35	61	17	17	8	0	6	209
<i>% change</i>	-1.5	37.1	0.0	23.5	52.9	-12.5	-	-	14.4
<i>Ave annual % change (a)</i>									
<i>Jun 2001 to Jun 2006</i>	1.0	-2.0	13.1	8.4	-3.5	-2.6	0.0	-	2.8
Bicyclists									
<i>Jul 2005 - Jun 2006</i>	13	9	7	5	4	2	2	0	42
<i>Jul 2004 - Jun 2005</i>	11	7	6	1	5	4	2	1	37
All road users (c)									
<i>Jul 2005 - Jun 2006</i>	547	322	342	144	178	55	47	19	1654
<i>Jul 2004 - Jun 2005</i>	507	336	312	145	174	53	40	15	1582
<i>% change</i>	7.9	-4.2	9.6	-0.7	2.3	3.8	17.5	26.7	4.6
<i>Ave annual % change (a)</i>									
<i>Jun 2001 to Jun 2006</i>	-0.1	-4.7	2.1	-2.0	-2.2	-2.4	-2.7	-1.0	-1.2

(a) This represents the average annual exponential change between the annual count of 5-years ago and the current annual count

(b) Includes pillion passengers

(c) Includes road users not separately classified

DEATHS IN EACH ROAD USER GROUP - QUARTERLY REPORT

Road deaths by road user group and age for twelve months ended
June 2006 and twelve months ended June 2005

	0-16 years	17-20 years	21-25 years	26-39 years	40-59 years	60+ years	All fatalities(d)
Drivers							
Jul 2005 - Jun 2006	5	103	123	220	169	141	772
Jul 2004 - Jun 2005	4	112	100	192	206	161	775
% change	25.0	-8.0	23.0	14.6	-18.0	-12.4	-0.4
<i>Ave annual % change (a)</i>							
Jun 2001 to Jun 2006	-9.0	-3.3	3.4	-0.3	-4.4	-1.9	-1.3
Passengers							
Jul 2005 - Jun 2006	81	68	45	52	59	46	360
Jul 2004 - Jun 2005	58	67	50	42	58	80	355
% change	39.7	1.5	-10.0	23.8	1.7	-42.5	1.4
<i>Ave annual % change (a)</i>							
Jun 2001 to Jun 2006	-0.5	-2.2	-5.3	-0.8	1.8	-13.5	-3.1
Pedestrians							
Jul 2005 - Jun 2006	31	13	18	49	35	86	240
Jul 2004 - Jun 2005	16	19	15	39	41	71	201
% change	93.8	-31.6	20.0	25.6	-14.6	21.1	19.4
<i>Ave annual % change (a)</i>							
Jun 2001 to Jun 2006	-5.4	-11.5	3.7	2.2	-8.6	-2.2	-2.7
Motor cyclists (b)							
Jul 2005 - Jun 2006	4	25	54	84	58	11	239
Jul 2004 - Jun 2005	6	23	34	83	52	11	209
% change	-33.3	8.7	58.8	1.2	11.5	0.0	14.4
<i>Ave annual % change (a)</i>							
Jun 2001 to Jun 2006	0.0	-1.5	5.2	-0.2	5.2	17.1	2.8
Bicyclists							
Jul 2005 - Jun 2006	6	3	1	8	13	11	42
Jul 2004 - Jun 2005	11	1	1	9	10	5	37
All road users (c)							
Jul 2005 - Jun 2006	127	212	241	414	334	295	1654
Jul 2004 - Jun 2005	95	222	201	366	370	328	1582
% change	33.7	-4.5	19.9	13.1	-9.7	-10.1	4.6
<i>Ave annual % change (a)</i>							
Jun 2001 to Jun 2006	-2.2	-3.6	1.2	0.1	-2.2	-3.5	-1.2

(a) This represents the average annual exponential change between the annual count of 5-years ago and the current annual count

(b) Includes pillion passengers

(c) Includes road users not separately classified

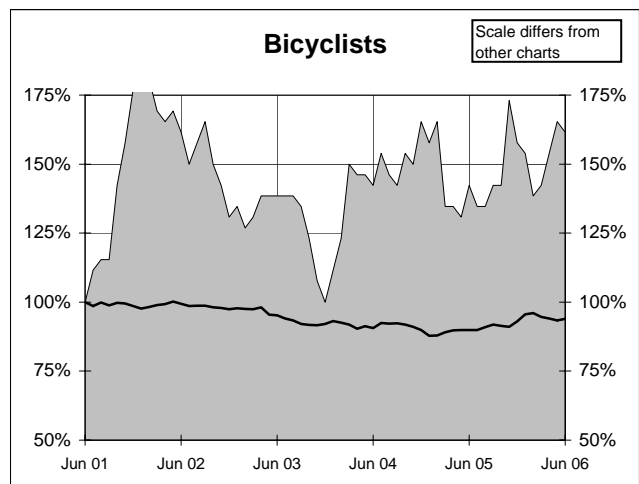
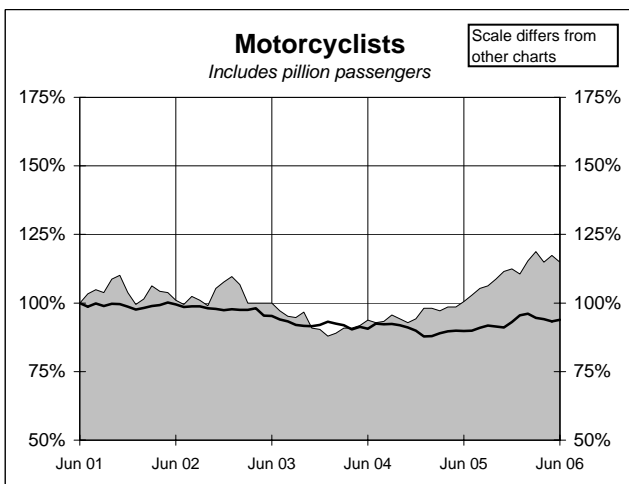
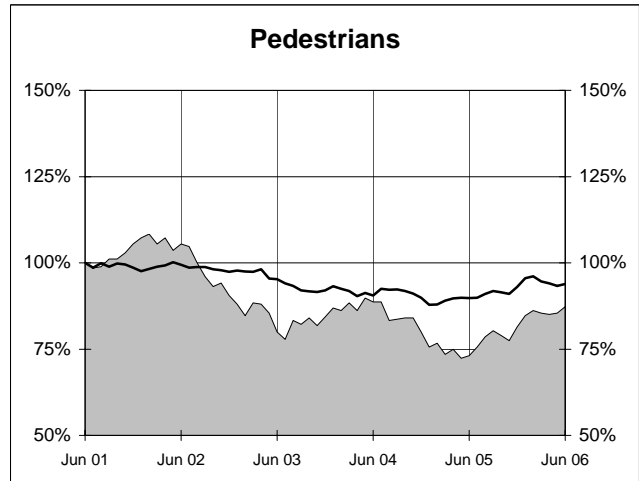
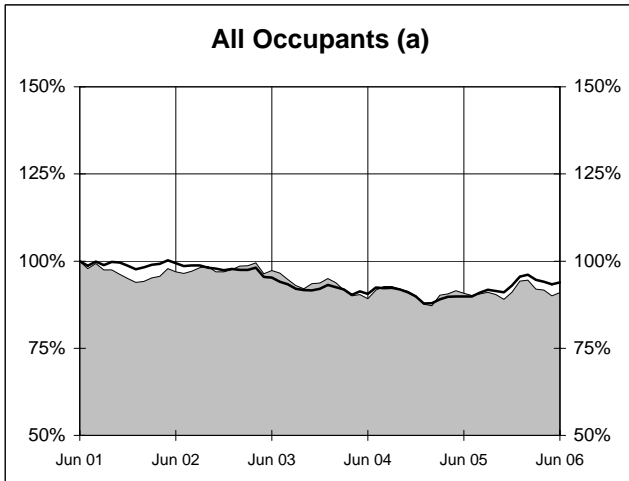
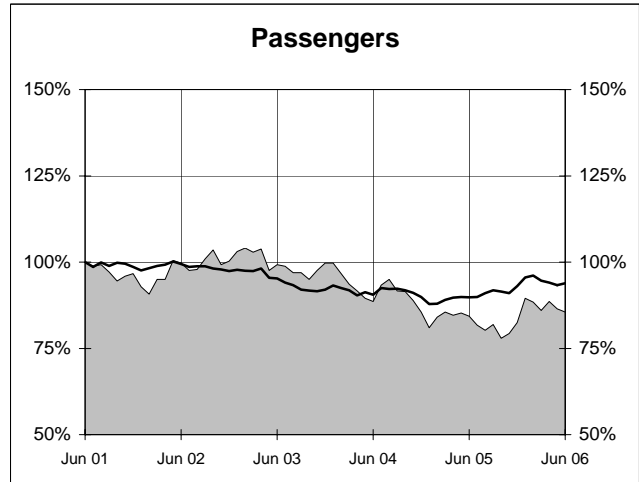
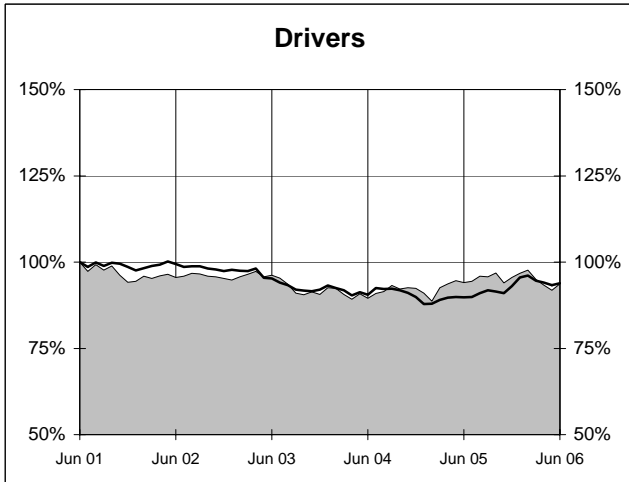
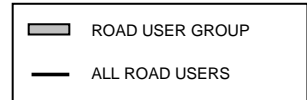
(d) Includes deaths with unstated age

- Percentage change not calculated

DEATHS IN EACH ROAD USER GROUP - TRENDS

Annual deaths in each road user group - last 5 years

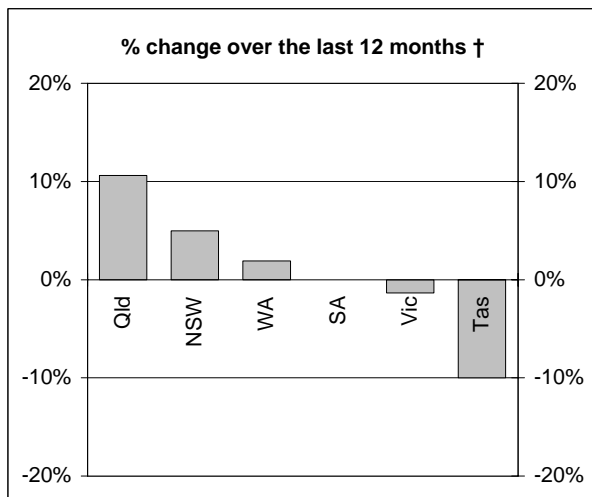
The number shown at each month represents the number of deaths in the preceding 12 months expressed as a percentage of the number of deaths in the 12 months to June 2001.



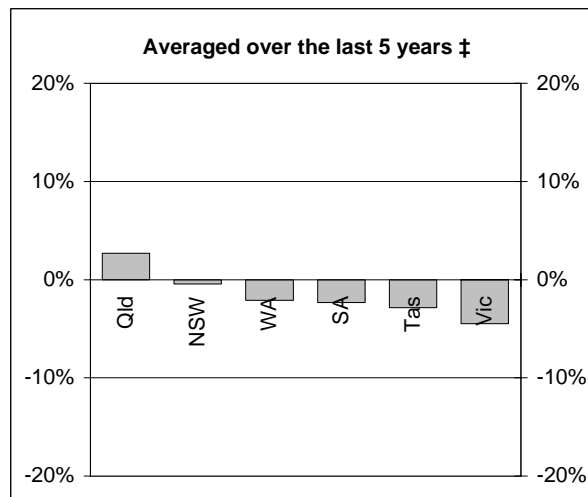
(a) Includes drivers and passengers

NUMBER OF FATAL ROAD CRASHES

Percentage change in fatal crashes in each State



† Percentage change between the 12-month periods of Jul 2004 - Jun 2005 and Jul 2005 - Jun 2006



‡ Average annual percentage change over each of the 12-month periods from Jul 2000 - Jun 2001 to Jul 2005 - Jun 2006

Fatal crashes by State/Territory for month, year to date and twelve months - period ended June 2006 and period ended June 2005

	NSW	Vic	Qld	SA	WA	Tas	NT	ACT	Australia
Current month									
Jun 2006	38	20	26	12	15	6	3	1	121
Jun 2005	34	20	25	7	7	9	6	0	108
% change	11.8	0.0	4.0	71.4	114.3	-33.3	-50.0	-	12.0
Year to date									
Jan 2006 - Jun 2006	253	140	146	62	82	21	14	4	722
Jan 2005 - Jun 2005	235	162	129	62	73	25	19	11	716
% change	7.7	-13.6	13.2	0.0	12.3	-16.0	-26.3	-63.6	0.8
12 months to date									
Jul 2005 - Jun 2006	486	294	313	127	160	45	46	18	1489
Jul 2004 - Jun 2005	463	298	283	127	157	50	36	15	1429
% change	5.0	-1.3	10.6	0.0	1.9	-10.0	27.8	20.0	4.2
Ave annual % change (a)									
Jun 2001 to Jun 2006	-0.4	-4.5	2.7	-2.3	-2.1	-2.9	-0.4	-1.1	-1.2

(a) This represents the average annual exponential change between the annual count of 5 years ago and the current annual count

FATAL CRASHES INVOLVING TRUCKS AND BUSES

Fatal crashes and deaths involving articulated trucks and buses - twelve months ended June 2006 and twelve months ended June 2005

	NSW	Vic	Qld	SA	WA	Tas	NT	ACT	Australia
--	-----	-----	-----	----	----	-----	----	-----	-----------

FATAL CRASHES INVOLVING ARTICULATED TRUCKS

Number of crashes

Jul 2005 - Jun 2006	55	15	31	16	11	5	4	0	137
Jul 2004 - Jun 2005	54	26	19	9	14	4	0	0	126
									(+8.7%)

Number of deaths

Jul 2005 - Jun 2006	67	17	39	16	12	5	4	0	160
Jul 2004 - Jun 2005	59	29	20	13	16	4	0	0	141
									(+13.5%)

Note: Data on heavy rigid trucks not currently available

FATAL CRASHES INVOLVING BUSES

Number of crashes

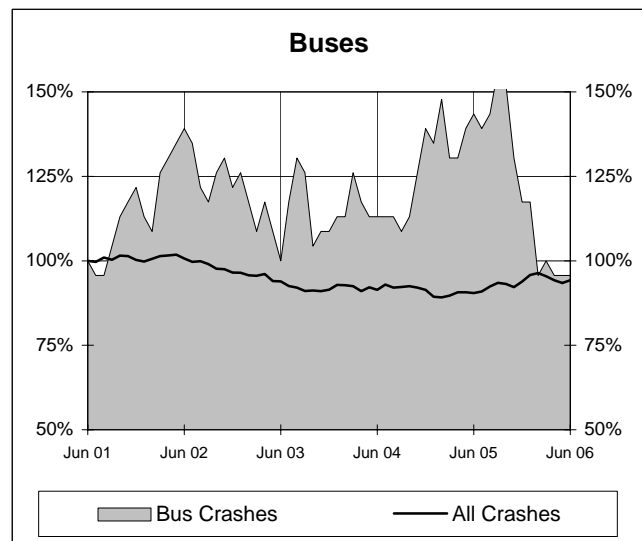
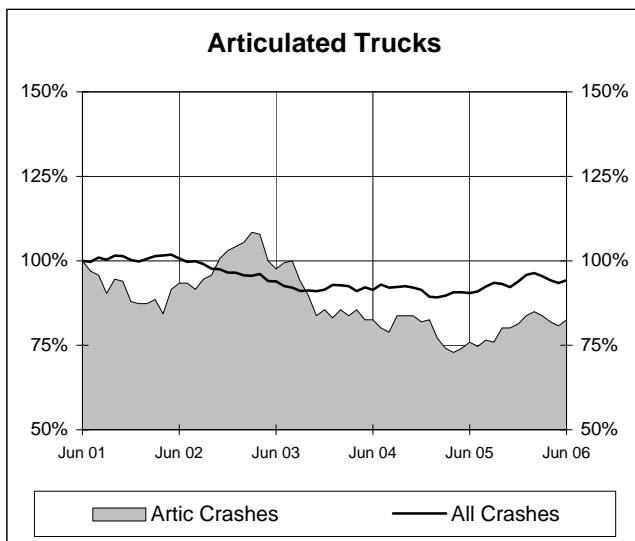
Jul 2005 - Jun 2006	10	3	8	0	0	1	0	0	22
Jul 2004 - Jun 2005	21	4	4	3	1	0	0	0	33
									(-33.3%)

Number of deaths

Jul 2005 - Jun 2006	12	4	10	0	0	1	0	0	27
Jul 2004 - Jun 2005	25	4	4	3	1	0	0	0	37
									(-27.0%)

Annual count of fatal crashes involving articulated trucks and buses - last 5 years

The number shown at each month represents the number of fatal crashes in the preceding 12 months expressed as a percentage of the number of fatal crashes in the 12 months to June 2001.



TIME SERIES - QUARTERLY REPORT

Road deaths by road user group, 1991 to 2004

	<i>Drivers</i>	<i>Passengers</i>	<i>Pedestrians</i>	<i>Motor cyclists (a)</i>	<i>Bicyclists (b)</i>	<i>All road users (c)</i>
1991	910	554	343	248	58	2113
1992	815	570	350	197	41	1974
1993	859	513	331	203	45	1953
1994	809	501	367	190	59	1928
1995	874	491	398	204	48	2017
1996	869	499	351	193	57	1970
1997	776	431	328	177	52	1767
1998	741	468	318	181	44	1755
1999	820	428	299	176	40	1764
2000	852	450	287	191	31	1817
2001	776	407	290	216	46	1737
2002	785	422	249	224	34	1715
2003	747	420	232	188	26	1621
2004	761	360	220	196	43	1583
2005	787	347	224	234	41	1638

(a) Includes pillion passengers.

(b) From 1989, includes pedal cycle passengers.

(c) Includes road users not separately classified.

Road deaths by State/Territory, 1991 to 2004

	<i>NSW</i>	<i>Vic</i>	<i>Qld</i>	<i>SA</i>	<i>WA</i>	<i>Tas</i>	<i>NT</i>	<i>ACT</i>	<i>Australia</i>
1991	663	503	395	184	207	77	67	17	2113
1992	649	396	416	165	200	74	54	20	1974
1993	581	435	396	218	209	58	44	12	1953
1994	646	377	418	159	211	59	41	17	1928
1995	620	418	456	181	209	57	61	15	2017
1996	581	417	385	181	247	64	72	23	1970
1997	576	377	360	148	197	32	60	17	1767
1998	556	390	279	168	223	48	69	22	1755
1999	577	383	314	151	218	53	49	19	1764
2000	603	407	317	166	212	43	51	18	1817
2001	524	444	324	153	165	61	50	16	1737
2002	561	397	322	154	179	37	55	10	1715
2003	539	330	310	157	180	41	53	11	1621
2004	510	343	311	139	178	58	35	9	1583
2005	517	348	330	148	163	51	55	26	1638

DEATH RATES - QUARTERLY REPORT

Road death rates by State/Territory

	<i>NSW</i>	<i>Vic</i>	<i>Qld</i>	<i>SA</i>	<i>WA</i>	<i>Tas</i>	<i>NT</i>	<i>ACT</i>	<i>Australia</i>
Per capita (a)									
2005	7.63	6.93	8.32	9.60	8.11	10.51	27.12	8.00	8.06
2001	7.97	9.24	8.93	10.12	8.68	12.93	25.28	5.01	8.95
Per vehicle (b)									
2005	1.24	0.95	1.19	1.33	1.07	1.41	5.01	1.18	1.18
2001	1.40	1.34	1.38	1.46	1.20	1.84	4.86	0.79	1.39

(a) Annual deaths per 100,000 population: 2005 at June 30 (preliminary data); 1999 at June 30 (revised data) taken from ABS catalogue 3201.0

(b) Annual deaths per 10,000 registered motor vehicles: 2005 at Mar 31; 1999 at Oct 31 taken from ABS catalogue 9309.0.

CHARACTERISTICS OF FATAL CRASHES

Proportion (per cent) of fatal crashes by speed limit, crash type, time of day, and time of week - two years ended June 2006 and two years ended June 2001

	<i>Speed limit (km/h) (a)</i>			<i>Time of Day</i>	
	<i>Up to 60</i>	<i>65-95</i>	<i>100+</i>	<i>Day time</i>	<i>Night-time (b)</i>
<i>Jul 2004 - Jun 2006</i>	32.8	22.1	45.0	54.4	45.6
<i>Jul 1999 - Jun 2001</i>	33.3	21.4	45.3	55.4	44.6

	<i>Crash Type</i>			<i>Time of week</i>	
	<i>Pedestrian crash</i>	<i>Other single veh. crash</i>	<i>Other multiple veh. crash</i>	<i>Week day</i>	<i>Week-end (c)</i>
<i>Jul 2004 - Jun 2006</i>	14.8	45.3	39.9	57.8	42.2
<i>Jul 1999 - Jun 2001</i>	18.1	40.9	41.0	59.9	40.1

(a) Excludes ACT

(b) 6:00 pm to 5:59 am

(c) 6:00 pm Friday to 5:59 am Monday