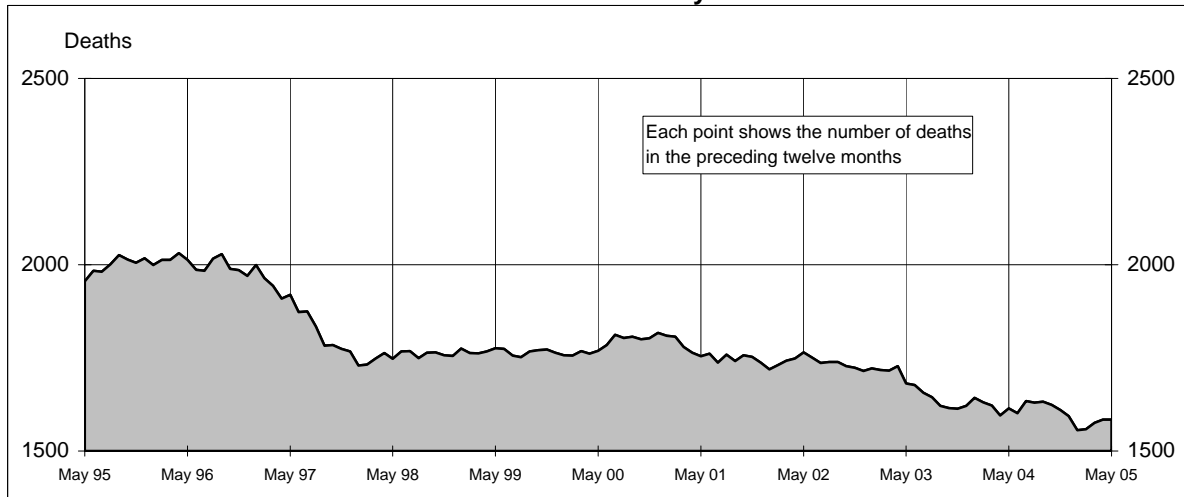
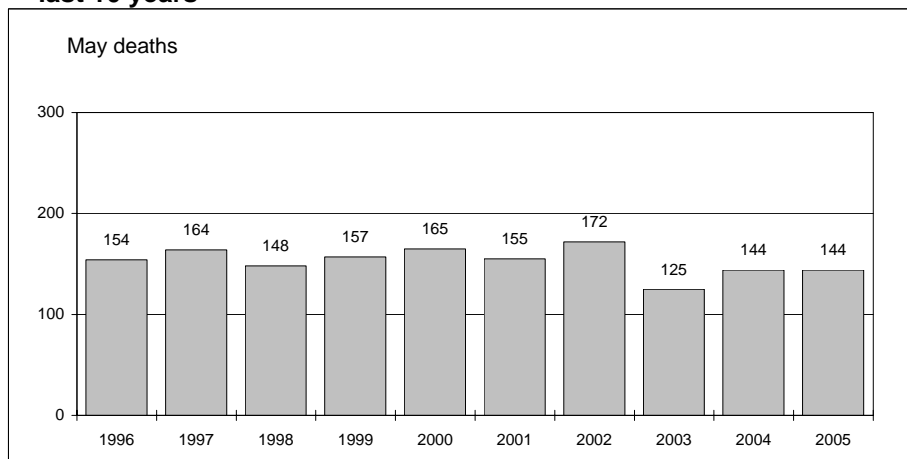




Australian road deaths for 12 months to date - last 10 years



Australian road deaths for May - last 10 years



Inquiries

For further information about data in this bulletin, contact:

The Editor
Transport Safety Statistics Unit
Australian Transport Safety Bureau
PO Box 967,
Civic Square, ACT 2608

Email: stats@atsb.gov.au
Internet: www.atsb.gov.au

Data Sources

The data presented here are obtained from the following sources:

Roads and Traffic Authority, NSW
Vicroads

Queensland Transport
South Australian Police Department
Western Australian Police Service
Department of Infrastructure,
Energy and Resources, Tasmania
Northern Territory Police,
Fire & Emergency Services
Department of Urban Services, ACT

Note

Road death statistics for recent months are preliminary and subject to revision. They include any deaths occurring within 30 days of a crash stemming from injuries received in the crash.

© Australian Government

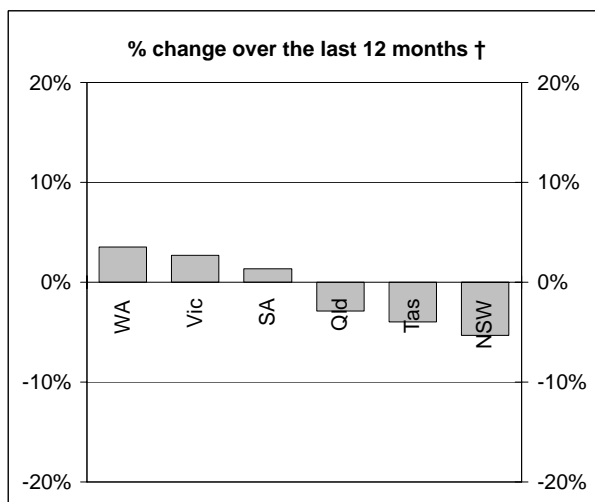
This month's key figures

The total number of road deaths in May 2005 was 144
- this is a 0.0% increase over the May 2004 figure.

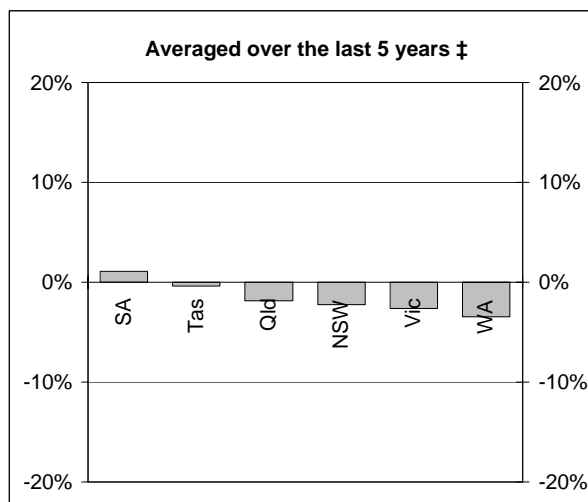
The number of road deaths in 2005 to the end of May is 664
- this is a 1.5% decrease from the same 5 month period in 2004.

NUMBER OF ROAD CRASH DEATHS

Percentage change in road deaths in each State



† Percentage change between the 12-month periods of Jun 2003 - May 2004 and Jun 2004 - May 2005



‡ Average annual percentage change over each of the 12-month periods from Jun 1999 - May 2000 to Jun 2004 - May 2005

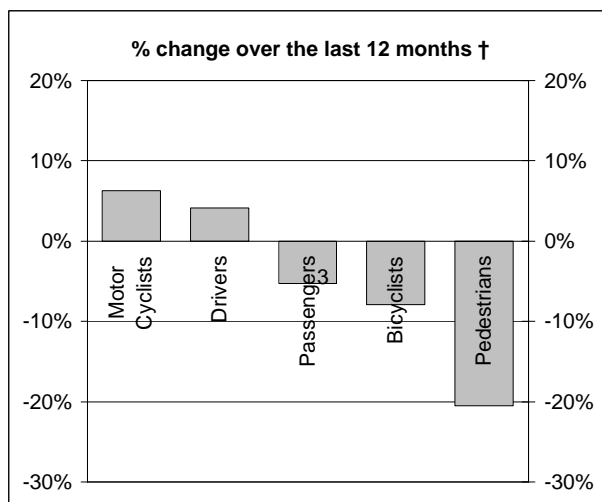
Road deaths by State/Territory for month, year to date, and twelve months - period ended May 2005 and period ended May 2004

	NSW	Vic	Qld	SA	WA	Tas	NT	ACT	Australia
Current month									
May 2005	56	30	20	14	12	8	1	3	144
May 2004	41	46	25	12	14	3	3	0	144
% change	36.6	-34.8	-20.0	16.7	-14.3	166.7	-66.7	-	0.0
Year to date									
Jan 2005 - May 2005	215	159	113	64	72	16	14	11	664
Jan 2004 - May 2004	223	160	121	53	73	26	14	4	674
% change	-3.6	-0.6	-6.6	20.8	-1.4	-38.5	0.0	175.0	-1.5
12-months to date									
Jun 2004 - May 2005	513	342	303	150	177	48	35	16	1584
Jun 2003 - May 2004	542	333	312	148	171	50	47	11	1614
Difference	-29	9	-9	2	6	-2	-12	5	-30
% change	-5.4	2.7	-2.9	1.4	3.5	-4.0	-25.5	45.5	-1.9
Ave annual % change (a)									
May 2000 to May 2005	-2.2	-2.6	-1.9	1.1	-3.5	-0.4	-8.0	0.0	-2.2

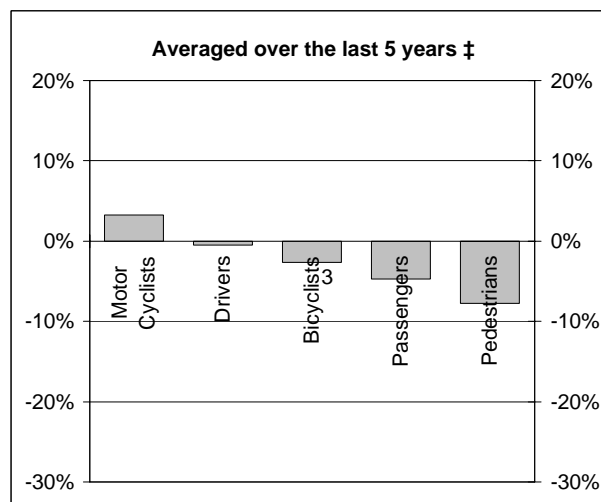
(a) This represents the average annual exponential change between the annual count of 5 years ago and the current annual count

DEATHS IN EACH ROAD USER GROUP

Percentage change in deaths in each road user group



† Percentage change between the 12-month periods of Jun 2003 - May 2004 and Jun 2004 - May 2005



‡ Average annual percentage change over each of the 12-month periods from Jun 1999 - May 2000 to Jun 2004 - May 2005

Road deaths by road user group and gender for twelve months ended May 2005 and twelve months ended May 2004

	Drivers	Passengers	Pedestrians	Motor cyclists (a)	Bicyclists	All road users (b)
Males						
Jun 2004 - May 2005	612	191	123	188	32	1153
Jun 2003 - May 2004	568	185	176	177	31	1142
% change	7.7	3.2	-30.1	6.2	3.2	1.0
Females						
Jun 2004 - May 2005	170	167	75	15	3	431
Jun 2003 - May 2004	183	192	73	14	7	471
% change	-7.1	-13.0	2.7	7.1	-57.1	-8.5
Persons (c)						
Jun 2004 - May 2005	782	358	198	203	35	1584
Jun 2003 - May 2004	751	378	249	191	38	1614
% change	4.1	-5.3	-20.5	6.3	-7.9	-1.9
Ave annual % change (d)						
May 2000 to May 2005	-0.5	-4.7	-7.8	3.2	-2.6	-2.2

(a) Includes pillion passengers

(b) Includes road users not separately specified

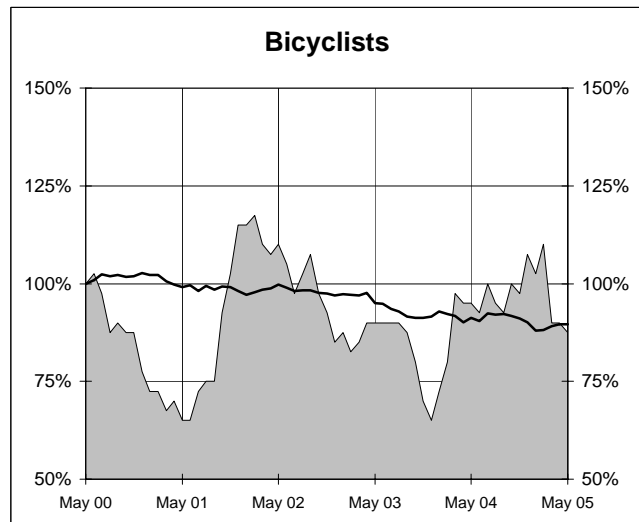
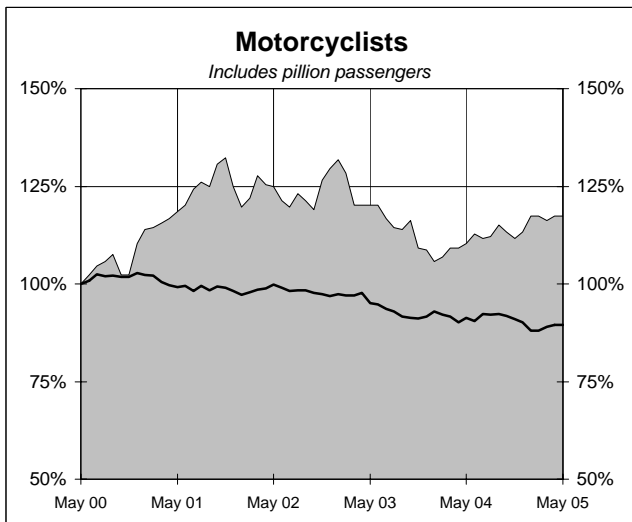
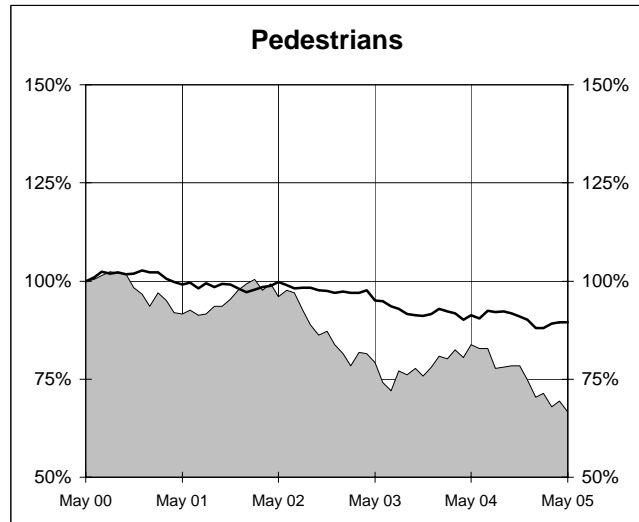
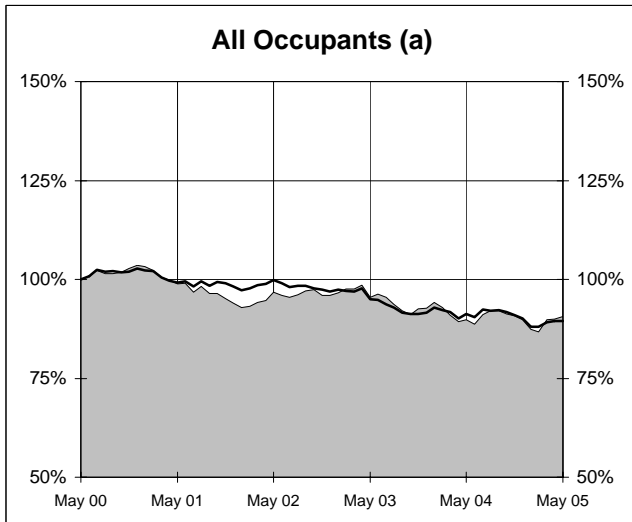
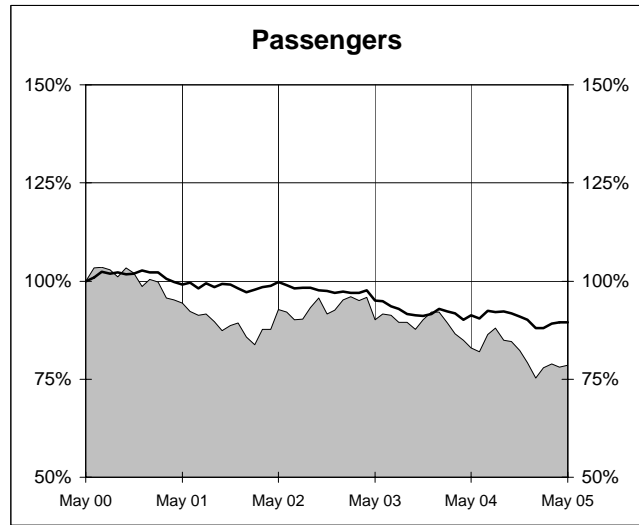
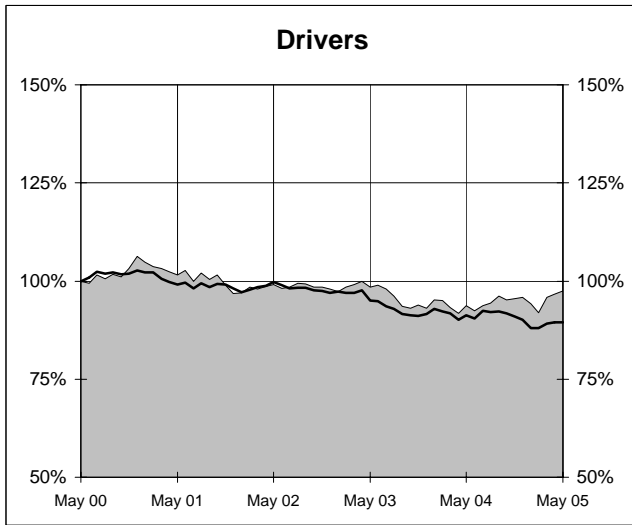
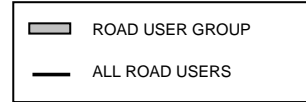
(c) Includes road users with unstated gender

(d) This represents the average annual exponential change between the annual count of 5 years ago and the current annual count

DEATHS IN EACH ROAD USER GROUP - TRENDS

Annual deaths in each road user group - last 5 years

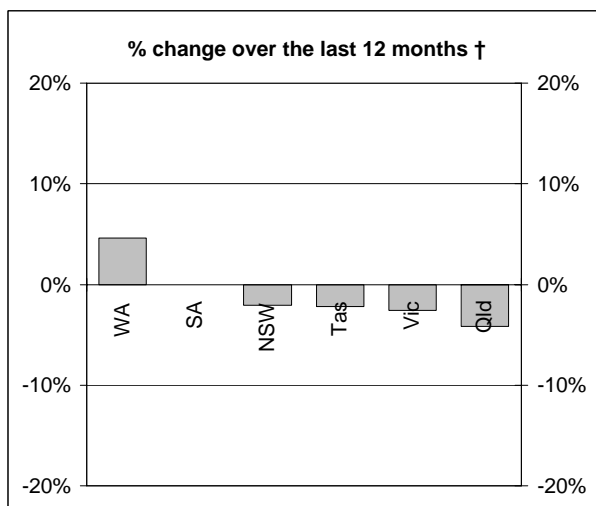
The number shown at each month represents the number of deaths in the preceding 12 months expressed as a percentage of the number of deaths in the 12 months to May 2000.



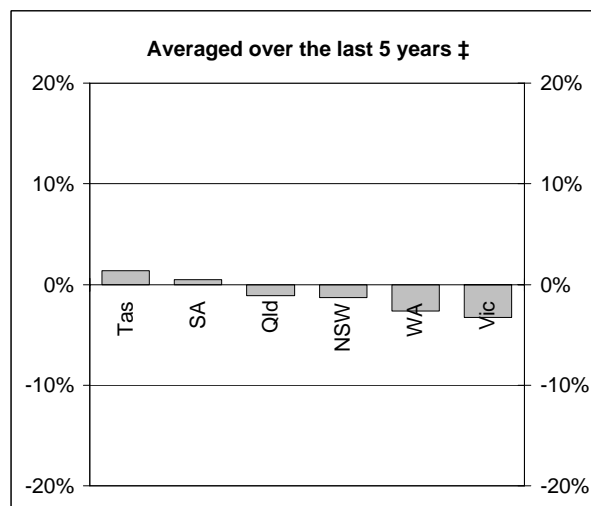
(a) Includes drivers and passengers

NUMBER OF FATAL ROAD CRASHES

Percentage change in fatal crashes in each State



† Percentage change between the 12-month periods of Jun 2003 - May 2004 and Jun 2004 - May 2005



‡ Average annual percentage change over each of the 12-month periods from Jun 1999 - May 2000 to Jun 2004 - May 2005

Fatal crashes by State/Territory for month, year to date and twelve months - period ended May 2005 and period ended May 2004

	NSW	Vic	Qld	SA	WA	Tas	NT	ACT	Australia
Current month									
May 2005	52	28	18	12	11	8	1	3	133
May 2004	36	45	25	10	14	3	3	0	136
% change	44.4	-37.8	-28.0	20.0	-21.4	166.7	-66.7	-	-2.2
Year to date									
Jan 2005 - May 2005	201	143	102	53	66	16	12	11	604
Jan 2004 - May 2004	198	152	115	50	69	23	14	4	625
% change	1.5	-5.9	-11.3	6.0	-4.3	-30.4	-14.3	175.0	-3.4
12 months to date									
Jun 2004 - May 2005	472	303	276	131	159	45	32	16	1434
Jun 2003 - May 2004	482	311	288	131	152	46	41	11	1462
% change	-2.1	-2.6	-4.2	0.0	4.6	-2.2	-22.0	45.5	-1.9
Ave annual % change (a)									
May 2000 to May 2005	-1.3	-3.3	-1.1	0.5	-2.7	1.4	-8.2	4.2	-1.8

(a) This represents the average annual exponential change between the annual count of 5 years ago and the current annual count

FATAL CRASHES INVOLVING TRUCKS AND BUSES

Fatal crashes and deaths involving articulated trucks and buses - twelve months ended May 2005 and twelve months ended May 2004

	NSW	Vic	Qld	SA	WA	Tas	NT	ACT	Australia
--	-----	-----	-----	----	----	-----	----	-----	-----------

FATAL CRASHES INVOLVING ARTICULATED TRUCKS

Number of crashes

Jun 2004 - May 2005	53	24	16	10	13	4	1	0	121
Jun 2003 - May 2004	51	35	21	8	16	3	1	1	136
									(-11.0%)

Number of deaths

Jun 2004 - May 2005	58	27	17	14	15	4	1	0	136
Jun 2003 - May 2004	64	39	24	8	19	3	1	1	159
									(-14.5%)

Note: Data on heavy rigid trucks not currently available

FATAL CRASHES INVOLVING BUSES

Number of crashes

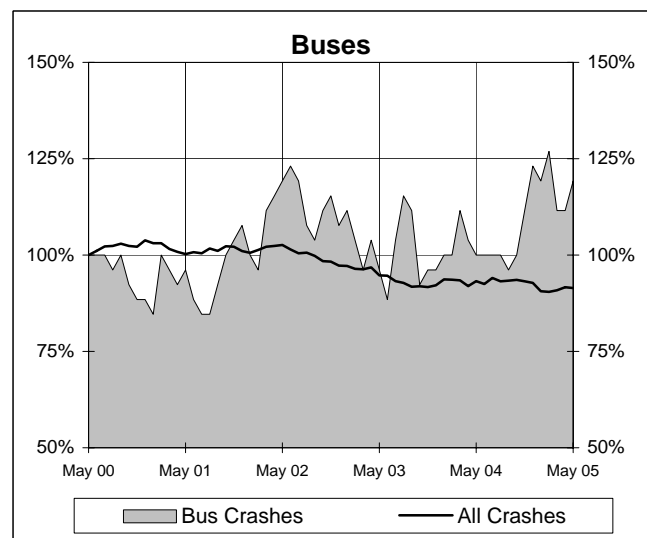
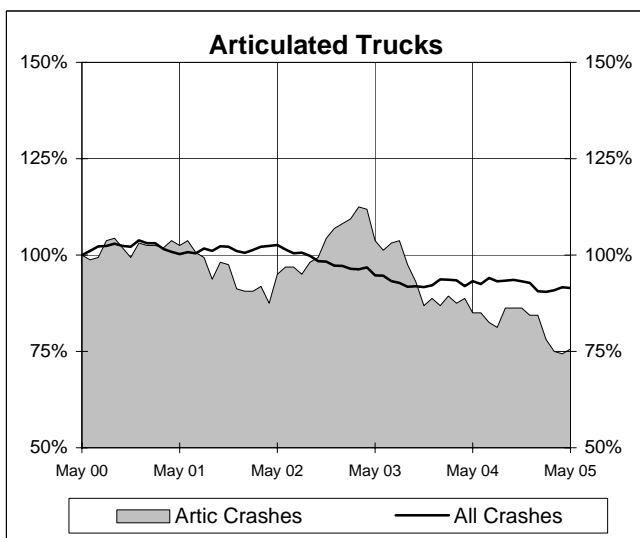
Jun 2004 - May 2005	20	3	4	3	1	0	0	0	31
Jun 2003 - May 2004	10	4	6	2	2	0	1	1	26
									(+19.2%)

Number of deaths

Jun 2004 - May 2005	21	3	4	3	1	0	0	0	32
Jun 2003 - May 2004	11	4	6	3	2	0	1	1	28
									(+14.3%)

Annual count of fatal crashes involving articulated trucks and buses - last 5 years

The number shown at each month represents the number of fatal crashes in the preceding 12 months expressed as a percentage of the number of fatal crashes in the 12 months to May 2000.



CHARACTERISTICS OF FATAL CRASHES

Proportion (per cent) of fatal crashes by speed limit, crash type, time of day, and time of week - two years ended May 2005 and two years ended May 2000

	<i>Speed limit (km/h) (a)</i>			<i>Time of Day</i>	
	<i>Up to 60</i>	<i>65-95</i>	<i>100+</i>	<i>Day time</i>	<i>Night-time (b)</i>
<i>Jun 2003 - May 2005</i>	32.1	23.1	44.8	54.4	45.6
<i>Jun 1998 - May 2000</i>	32.7	22.1	45.2	54.7	45.3

	<i>Crash Type</i>			<i>Time of week</i>	
	<i>Pedestrian crash</i>	<i>Other single veh. crash</i>	<i>Other multiple veh. crash</i>	<i>Week day</i>	<i>Week- end (c)</i>
<i>Jun 2003 - May 2005</i>	15.2	44.4	40.4	58.4	41.6
<i>Jun 1998 - May 2000</i>	19.7	38.6	41.7	59.8	40.2

(a) Excludes ACT

(b) 6:00 pm to 5:59 am

(c) 6:00 pm Friday to 5:59 am Monday