



## Appendix A: Appended Figures

Figure A1: Site Location and Island Features

Figure A2: Site Layout and Potential On-Site PFAS Source Areas

Figure A3: Site Layout and Potential Off-Site PFAS Source Areas

Figure A4: Site Topography and Drainage

Figure A5: Inferred Groundwater Flow and Bore Locations

Figure A6a: Sample Location Plan – Norfolk Island Airport

Figure A6b: Sample Location Plan Potential Source PS01 and PS02

Figure A6c: Sample Location Plan Potential Source PS03

Figure A6d: Sample Location Plan Potential Source PS04

Figure A6e: Sample Location Plan Potential Source PS05

Figure A6f: Sample Location Plan Potential Source PS06

Figure A6g: Sample Location Plan Potential Source PS11

Figure A6h: Sample Location Plan Hospital

Figure A6i: Sample Location Plan Depot

Figure A6j: Sample Location Plan St Barnabas Chapel

Figure A6k: Sample Location Plan Rest of Island

Figure A7a: Shallow Soil Investigation Results (PFOS+PFHxS) – Norfolk Island Airport (Human Health Screening)

Figure A7b: Deeper Soil Investigation Results (PFOS+PFHxS) – Norfolk Island Airport (Human Health Screening)

Figure A7c: Soil Analytical Results (PFOS+PFHxS) – Off-Site Locations (Human Health Screening)



Figure A8a: Shallow Soil Investigation Results (PFOS) – Norfolk Island Airport (Ecological Screening)

Figure A8b: Deeper Soil Investigation Results (PFOS) – Norfolk Island Airport (Ecological Screening)

Figure A8c: Soil Analytical Results (PFOS) – Off-Site Locations (Ecological Screening)

Figure A9a: Sediment Analytical Results (PFOS+PFHxS) – Mission Creek Catchment (Human Health Screening)

Figure A9b: Sediment Analytical Results (PFOS+PFHxS) – Wider Norfolk Island (Human Health Screening)

Figure A10a: Sediment Analytical Results (PFOS) – Mission Creek Catchment (Ecological Screening)

Figure A10b: Sediment Analytical Results (PFOS) – Wider Norfolk Island (Ecological Screening)

Figure A11a: Shallow Leachable Soil Analytical Results (PFOS+PFHxS) – Norfolk Island Airport

Figure A11b: Deeper Leachable Soil Analytical Results (PFOS+PFHxS) – Norfolk Island Airport

Figure A11c: Leachable Soil Analytical Results (PFOS+PFHxS) – Wider Norfolk Island

Figure A12a: Surface Water Analytical Results (PFOS+PFHxS) – On and Off-Site Locations (Human Health Screening)

Figure A12b: Surface Water Analytical Results (PFOS) – On and Off-Site Locations (Ecological Screening)

Figure A12c: Bore, Tap and Tank Results (PFOS+PFHxS) – Norfolk Island Airport

Figure A12b: Bore, Tap and Tank Results (PFOS+PFHxS) – Wider Norfolk Island

Figure A13: Grass Analytical Results (PFOS, PFHxS) – On and Off-Site Locations

Figure A14: PFAS Conceptual Site Model - Mission Creek Catchment



**Legend:**

- Approximate Airport Boundary (the site)
- Areas of Significance
- National Park
- Kingston and Arthurs Vale Historic Area (KAHVA)
- ▲ Mountain Peak
- Approximate Extent of Mission Creek Catchment
- WWII Dam
- Airport Bore
- Creek



**Details:**

Data Sources:  
 Aerial imagery: Esri maps  
 Vector Datasets: Open Street Maps

Created: S. Koroblitsas  
 PM: C. Sandiford  
 Approved: x  
 Date: 10/06/2021  
 Revision: 0



Datum/Projection: WGS 1984 Web Mercator Auxiliary Sphere Scale: 1:35,000(A3)

**Figure No:** A1  
**Title:** Site Location and Island Features

**Project:** PFAS Detailed Site Investigation

**Location:** Norfolk Island International Airport  
 Department for Infrastructure, Transport,  
 Regional Development and Communications

**Client:**

© Senversa 2019 Path: S:\01\_Jobs\1\_NSW\_Jobs\17776\_DITCRD\_NORFOLK\_DSI\17776\_backup.aprx

Maxar

Last Edited by: Stefanos Koroblitsas



**Legend:**

- Approximate Airport Boundary
- PFAS Source Areas (Potential and Confirmed)
- Group 1 Source Area
- Group 2 Source Area
- Group 3 Source Area
- Group 4 Source Area
- WWII Dam
- Airport Bore
- Creek



**Details:**

Data Sources:  
 Aerial imagery: Nearmap Pty Ltd  
 Vector Datasets: Open Street Maps

Created: S. Koroblitsas  
 PM: C. Sandiford  
 Approved: x  
 Date: 11/06/2021  
 Revision: 0



Datum/Projection: WGS 1984 Web Mercator Auxiliary Sphere Scale: 1:7,500 (A3)

**Figure No:**

**A2**

**Title:**

**Site Layout and Potential On-Site PFAS Source Areas**

**Project:**

PFAS Detailed Site Investigation

**Location:**

Norfolk Island International Airport

**Client:**

Department for Infrastructure, Transport, Regional Development and Communications



Path: S:\01\_Jobs\1\_NSW\_Jobs\17776\_DITCRD\_NORFOLK\_DSI\17776\_backup.aprx

© Senversa 2021



- Legend:**
- Approximate Airport Boundary
  - PFAS Source Areas (Potential and Confirmed)
    - Group 1 Source Area
    - Group 2 Source Area
    - Group 3 Source Area
    - Group 4 Source Area
  - Elevation Contours (approximate)
  - Creek
  - National Park
  - Kingston and Arthurs Vale Historic Area (KAVHA)
  - Airport Bore
  - WWII Dam
  - Mountain Peak

**Details:**

Data Sources:  
 Aerial imagery: Nearmap Pty Ltd  
 Vector Datasets: Open Street Maps

Created: S. Koroblitsas  
 PM: C. Sandiford  
 Approved: -  
 Date: 11/06/2021  
 Revision: 0

0 500 1,000 1,500  
 Metres

Datum/Projection: WGS 1984 Web Mercator Auxiliary Sphere Scale: 1:25,000 (A3)

**Figure No:** A3

**Title:** Off-Site Features and Potential PFAS Sources Areas

**Project:** PFAS Detailed Site Investigation

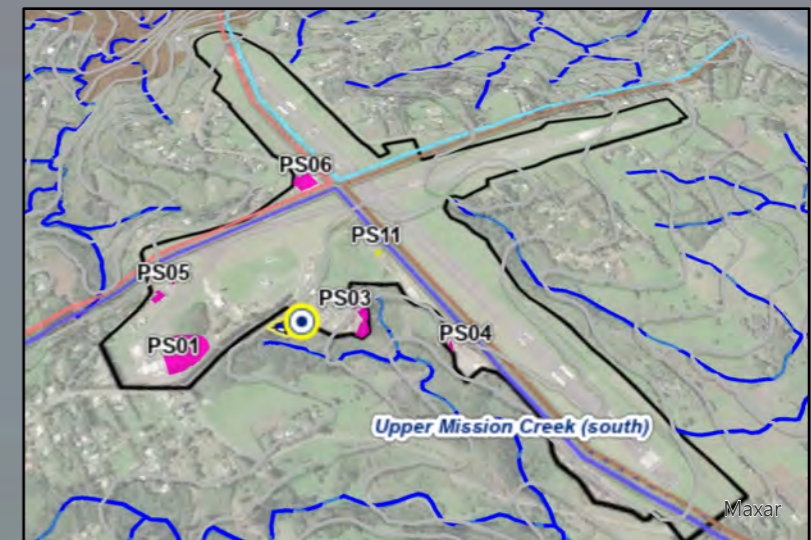
**Location:** Norfolk Island International Airport  
 Department for Infrastructure, Transport,  
 Regional Development and Communications

**Client:**

Maxar

Last Edited by: Stefanos Koroblitsas





Source: Esri, Maxar, GeoEye, Earthstar Geographics, CNES/Airbus DS, USDA, USGS, AeroGRID, IGN, and the GIS User Community



<b>Legend:</b> Creek - Creek - Approximate Airport Boundary Areas of Significance - National Park - Kingston and Arthurs Vale Historic Area (KAVHA) Approximate Extent of Surface Water Catchments - Headstone Creek - Mission Creek - Mt Pitt / Broken Bridge Creek		Rocky Point Creek Stockyard Creek Town Creek / Watermill Creek Mountain Peak Contour (10 m)		<b>PFAS Source Areas (Potential and Confirmed)</b> Group 1 Source Area Group 2 Source Area Group 3 Source Area Group 4 Source Area WWII Dam Airport Bore	
--	--	---	--	--	--

**Details:**

Data Sources:  
 Aerial imagery: Nearmap Pty Ltd  
 Vector Datasets: Open Street Maps

Created: S. Koroblitsas  
 PM: C. Sandiford  
 Approved: x  
 Date: 11/06/2021  
 Revision: 0

0 160 320 480 Metres

Datum/Projection: Scale:1:6,058 (A3)

<b>Figure No:</b>	<b>A4</b>
<b>Title:</b>	<b>Site Topography and Drainage</b>
<b>Project:</b>	PFAS Detailed Site Investigation
<b>Location:</b>	Norfolk Island International Airport Department for Infrastructure, Transport, Regional Development and Communications
<b>Client:</b>	



**Legend:**

- Approximate Airport Boundary
- Historical Groundwater Flow Direction
- Approximate Extent of Surface Water Catchments
- Headstone Creek
- Mission Creek
- Mt Pitt / Broken Bridge Creek
- Rocky Point Creek
- Stockyard Creek
- Town Creek / Watermill Creek
- Potential Sources
- Group 1 Source Area
- Group 2 Source Area
- Group 3 Source Area
- Group 4 Source Area
- WWII Dam
- Airport Bore

**Details:**

Data Sources:  
 Aerial imagery: Nearmap Pty Ltd  
 Vector Datasets: Open Street Maps

Created: S. Koroblitsas  
 PM: C. Sandiford  
 Approved: x  
 Date: 7/06/2021  
 Revision: 0



Datum/Projection: WGS 1984 Web Mercator Auxiliary Sphere Scale: 1:35,000(A3)

**Figure No:**

**A5**

**Title:**

**Inferred Groundwater Flow Direction**

**Project:**

PFAS Detailed Site Investigation

**Location:**

Norfolk Island International Airport

**Client:**

Department for Infrastructure, Transport,  
 Regional Development and Communications



Historical Groundwater Flow Regime (as measured in July – August 1974)”. Reference: Hydrogeology of Norfolk Island, South Pacific Ocean. BMR Bulletin 234



**Legend:**

Approximate Airport Boundary	Biota
PFAS Source Areas (Potential and Confirmed)	Soil
Group 1 Source Area	Creek
Group 2 Source Area	Airport Bore
Group 3 Source Area	WWII Dam
Group 4 Source Area	Sediment
Sediment	Elevation Contour (10 m)
Water	Sampled in 2021
Surface Water	Sampled in 2020

**Details:**

Data Sources:  
 Aerial imagery: Nearmap Pty Ltd  
 Vector Datasets: Open Street Maps

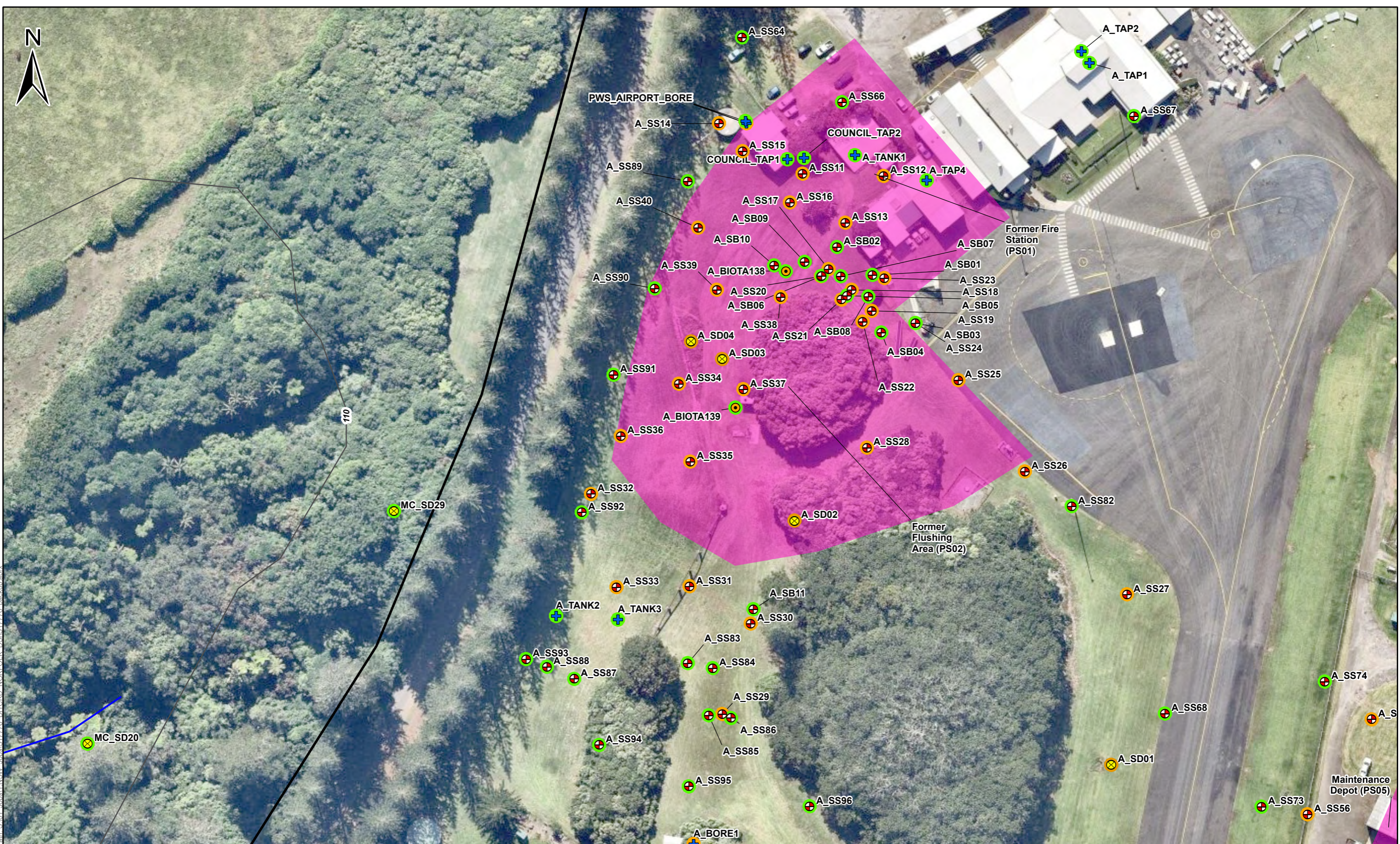
Created: S. Koroblitsas  
 PM: C. Sandiford  
 Approved: -  
 Date: 26/08/2021  
 Revision: 0

0 150 300 450 Metres

Datum/Projection: WGS 1984 Web Mercator Auxiliary Sphere Scale: 1:7,500 (A3)

<b>Figure No:</b>	<b>A6A</b>
<b>Title:</b>	<b>Sample Location Plan Norfolk Island Airport</b>
<b>Project:</b>	PFAS Detailed Site Investigation
<b>Location:</b>	Norfolk Island Airport Department for Infrastructure, Transport, Regional Development and Communications
<b>Client:</b>	





Path: S:\01\_Jobs\1\_NSW\_Jobs\17776\_DITCRD\_NORFOLK\_DSI\17776\_backup.aprx



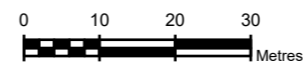
- Legend:**
- Approximate Airport Boundary
  - PFAS Source Areas (Potential and Confirmed)
  - Group 1 Source Area
  - Group 2 Source Area
  - Group 3 Source Area
  - Group 4 Source Area
  - Sediment
  - + Water
  - ⊗ Surface Water
  - ⊗ Biota
  - ⊗ Soil
  - Elevation Contour (10 m)
  - Creek
  - ⊗ Sampled in 2020
  - ⊗ Sampled in 2021

**Details:**

Data Sources:  
 Aerial imagery: Nearmap Pty Ltd  
 Vector Datasets: Open Street Maps

Created: S. Koroblitsas  
 PM: C. Sandiford  
 Approved: -  
 Date: 26/08/2021  
 Revision: 0

Datum/Projection: WGS 1984 Web Mercator Auxiliary Sphere Scale: 1:1,000 (A3)



**Figure No:** A6B

**Title:** Sample Location Plan  
PS01, PS02

**Project:** PFAS Detailed Site Investigation

**Location:** Norfolk Island Airport  
Department for Infrastructure, Transport,  
Regional Development and Communications

**Client:**

Last Edited by: fidelma.gurnett

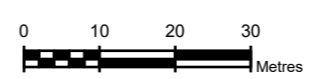


Legend:	
Approximate Airport Boundary	Surface Water
PFAS Source Areas (Potential and Confirmed)	Biota
Group 1 Source Area	Soil
Group 2 Source Area	Creek
Group 3 Source Area	Elevation Contour (10 m)
Group 4 Source Area	Sampled in 2021
Sediment	Sampled in 2020
Water	

Details:	
Data Sources:	Created: S. Koroblitsas
Aerial imagery: Nearmap Pty Ltd	PM: C. Sandiford
Vector Datasets: Open Street Maps	Approved: -
	Date: 26/08/2021
	Revision: 0

Datum/Projection: WGS 1984 Web Mercator Auxiliary Sphere Scale: 1:1,000 (A3)

Figure No:	<b>A6C</b>
Title:	<b>Sample Location Plan PS03</b>
Project:	PFAS Detailed Site Investigation
Location:	Norfolk Island Airport Department for Infrastructure, Transport, Regional Development and Communications
Client:	





- Legend:
- Approximate Airport Boundary
  - Approximate Airport Boundary
  - PFAS Source Areas (Potential and Confirmed)
    - Group 1 Source Area
    - Group 2 Source Area
    - Group 3 Source Area
    - Group 4 Source Area
  - Sediment
  - Water

- Surface Water
- Biota
- Soil
- Elevation Contour (10 m)
- Creek
- Sampled in 2021
- Sampled in 2020

**Details:**

Data Sources:  
 Aerial imagery: Nearmap Pty Ltd  
 Vector Datasets: Open Street Maps

Created: S. Koroblitsas  
 PM: C. Sandiford  
 Approved: -  
 Date: 26/08/2021  
 Revision: 0

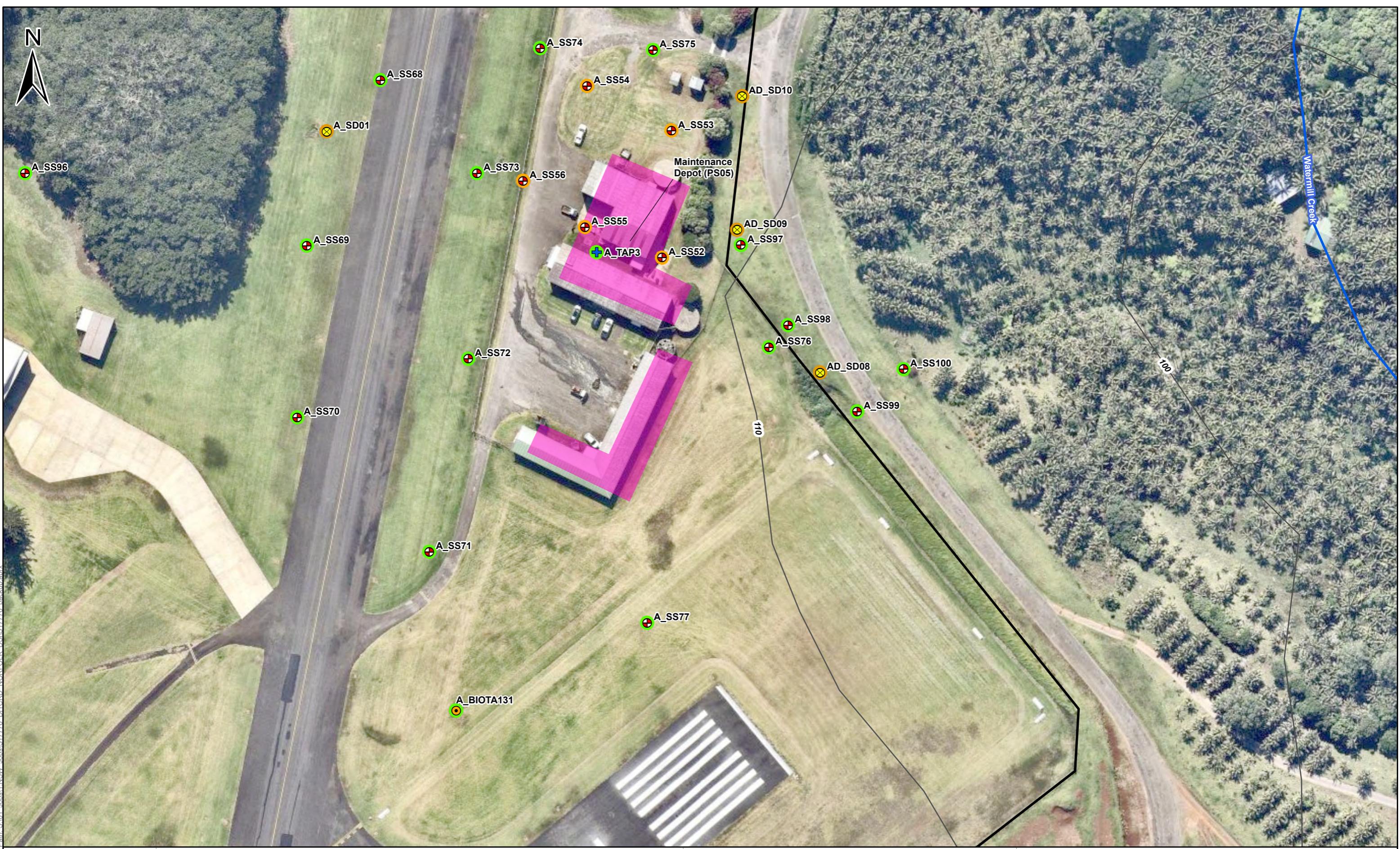


Datum/Projection: WGS 1984 Web Mercator Auxiliary Sphere Scale: 1:1,160 (A3)

**Figure No:** A6D  
**Title:** Sample Location Plan PS04  
**Project:** PFAS Detailed Site Investigation  
**Location:** Norfolk Island Airport  
 Department for Infrastructure, Transport, Regional Development and Communications  
**Client:**

© Senversa 2021 Path: S:\01\_Jobs\1\_NSW\_Jobs\17776\_DITCRD\_NORFOLK\_DSI\17776\_backup.aprx

Last Edited by: fidelma.gurnett



Legend:	
Approximate Airport Boundary	Surface Water
PFAS Source Areas (Potential and Confirmed)	
Group 1 Source Area	Biota
Group 2 Source Area	Soil
Group 3 Source Area	Creek
Group 4 Source Area	Elevation Contour (10 m)
Sediment	Sampled in 2021
Water	Sampled in 2020

Details:	
Data Sources:	Created: S. Koroblitsas
Aerial imagery: Nearmap Pty Ltd	PM: C. Sandiford
Vector Datasets: Open Street Maps	Approved: -
	Date: 26/08/2021
	Revision: 0

Datum/Projection: WGS 1984 Web Mercator Auxiliary Sphere Scale: 1:1,000 (A3)

<b>Figure No:</b>	<b>A6E</b>
<b>Title:</b>	<b>Sample Location Plan PS05</b>
Project:	PFAS Detailed Site Investigation
Location:	Norfolk Island Airport Department for Infrastructure, Transport, Regional Development and Communications
Client:	



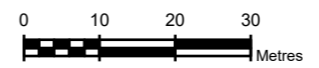
**Legend:**

- Approximate Airport Boundary
- PFAS Source Areas (Potential and Confirmed)
  - Group 1 Source Area
  - Group 2 Source Area
  - Group 3 Source Area
  - Group 4 Source Area
- Sediment
- Water
- Surface Water
- Biota
- Soil
- Elevation Contour (10 m)
- Sampled in 2021
- Sampled in 2020

**Details:**

Data Sources:  
 Aerial imagery: Nearmap Pty Ltd  
 Vector Datasets: Open Street Maps

Created: S. Koroblitsas  
 PM: C. Sandiford  
 Approved: -  
 Date: 26/08/2021  
 Revision: 0



Datum/Projection: WGS 1984 Web Mercator Auxiliary Sphere Scale: 1:1,000 (A3)

**Figure No: A6F**

**Title: Sample Location Plan PS06**

Project: PFAS Detailed Site Investigation

Location: Norfolk Island Airport  
 Department for Infrastructure, Transport,  
 Regional Development and Communications

Client:



Path: S:\01\_Jobs\1\_NSW\_Jobs\17776\_DITCRD\_NORFOLK\_DSI\17776\_backup.aprx



Legend:	
Approximate Airport Boundary	Surface Water
PFAS Source Areas (Potential and Confirmed)	
Group 1 Source Area	Biota
Group 2 Source Area	Soil
Group 3 Source Area	Elevation Contour (10 m)
Group 4 Source Area	Sampled in 2021
Sediment	Sampled in 2020
Water	

<b>Details:</b>	
Data Sources:	Created: S. Koroblitsas
Aerial imagery: Nearmap Pty Ltd	PM: C. Sandiford
Vector Datasets: Open Street Maps	Approved: -
	Date: 26/08/2021
	Revision: 0

Datum/Projection: WGS 1984 Web Mercator Auxiliary Sphere Scale: 1:1,000 (A3)

<b>Figure No:</b>	<b>A6G</b>
<b>Title:</b>	<b>Sample Location Plan PS11</b>
Project:	PFAS Detailed Site Investigation
Location:	Norfolk Island Airport Department for Infrastructure, Transport, Regional Development and Communications
Client:	



Path: S:\01\_Jobs\1 NSW\_Jobs\17776 DITCRD\_NORFOLK\_DSIS\17776\_backup.aprx



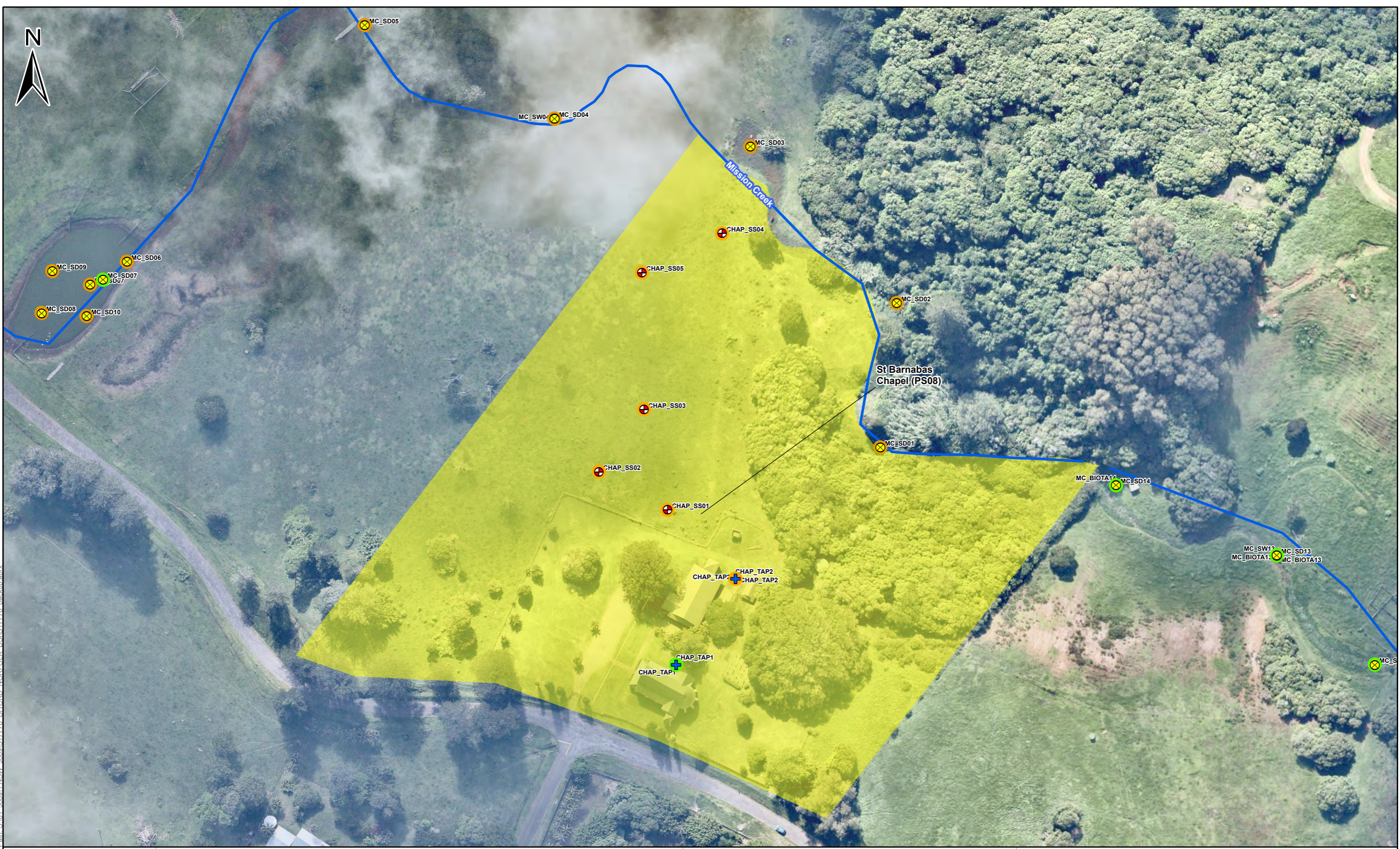
Legend:	
Approximate Airport Boundary	Water
PFAS Source Areas (Potential and Confirmed)	Surface Water
Group 1 Source Area	Biota
Group 2 Source Area	Soil
Group 3 Source Area	Elevation Contour (10 m)
Group 4 Source Area	Sampled in 2021
Sediment	Sampled in 2020

<b>Details:</b>	
Data Sources:	Created: S. Koroblitsas
Aerial imagery: Nearmap Pty Ltd	PM: C. Sandiford
Vector Datasets: Open Street Maps	Approved: -
	Date: 26/08/2021
	Revision: 0

0 10 20 30 Metres

Datum/Projection: WGS 1984 Web Mercator Auxiliary Sphere Scale: 1:800 (A3)

<b>Figure No:</b>	<b>A6H</b>
<b>Title:</b>	<b>Sample Location Plan Hospital</b>
<b>Project:</b>	PFAS Detailed Site Investigation
<b>Location:</b>	Norfolk Island Airport Department for Infrastructure, Transport, Regional Development and Communications
<b>Client:</b>	



Path: S:\01\_Jobs\1\_NSW\_Jobs\17776\_DITCRD\_NORFOLK\_DSI\17776\_backup.aprx



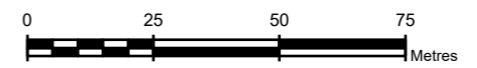
- Legend:**
- Approximate Airport Boundary
  - PFAS Source Areas (Potential and Confirmed)
    - Group 1 Source Area
    - Group 2 Source Area
    - Group 3 Source Area
    - Group 4 Source Area
  - Sediment
  - + Water
  - ⊗ Surface Water
  - ⊗ Biota
  - ⊗ Soil
  - ⊗ Sampled in 2021
  - ⊗ Sampled in 2020
  - Creek

**Details:**

Data Sources:  
 Aerial imagery: Nearmap Pty Ltd  
 Vector Datasets: Open Street Maps

Created: S. Koroblitsas  
 PM: C. Sandiford  
 Approved: -  
 Date: 26/08/2021  
 Revision: 0

Datum/Projection: WGS 1984 Web Mercator Auxiliary Sphere Scale: 1:500 (A3)



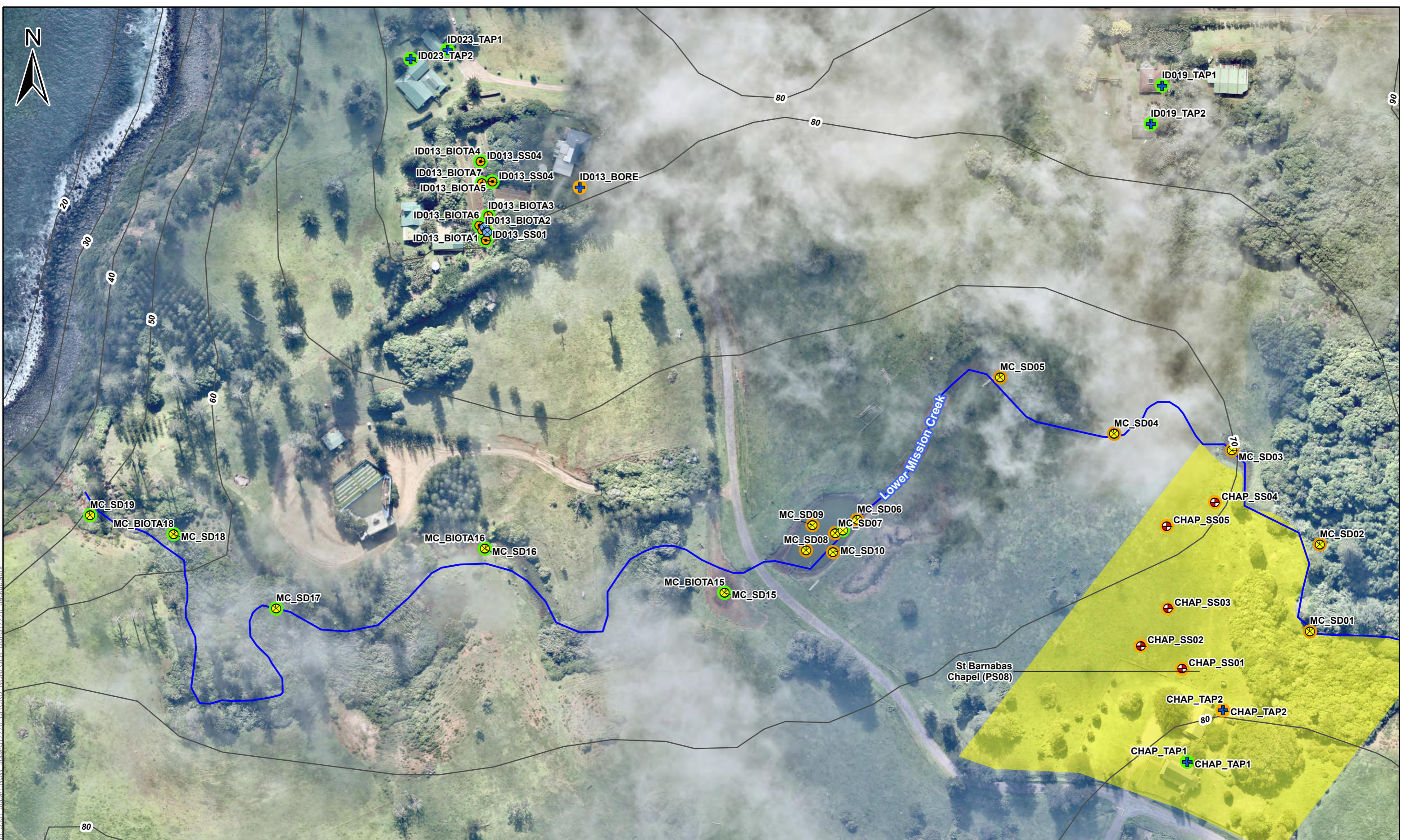
**Figure No:** A6I  
**Title:** Sample Location Plan  
 St Barnabas Chapel and Lower Mission Creek

**Project:** PFAS Detailed Site Investigation

**Location:** Norfolk Island Airport  
 Department for Infrastructure, Transport,  
 Regional Development and Communications

**Client:**





- Legend:**
- |  |   |
|--|---|
| <ul style="list-style-type: none"> <li>PFAS Source Areas (Potential and Confirmed)</li> <li>Group 1 Source Area</li> <li>Group 2 Source Area</li> <li>Group 3 Source Area</li> <li>Group 4 Source Area</li> <li>Approximate Airport Boundary</li> <li>Sediment</li> <li>Water</li> </ul> | <ul style="list-style-type: none"> <li>Surface Water</li> <li>Biota</li> <li>Soil</li> <li>Creek</li> <li>Elevation Contour (10 m)</li> <li>Sampled in 2021</li> <li>Sampled in 2020</li> </ul> |
|--|---|



**Details:**

Data Sources:	Created:	S. Koroblitsas
Aerial imagery: Nearmap Pty Ltd	PM:	C. Sandiford
Vector Datasets: Open Street Maps	Approved:	-
	Date:	27/08/2021
	Revision:	0

Datum/Projection: WGS 1984 Web Mercator Auxiliary Sphere Scale: 1:2,500 (A3)



**Figure No:** A6J

**Title:** Sample Location Plan  
St Barnabas Chapel

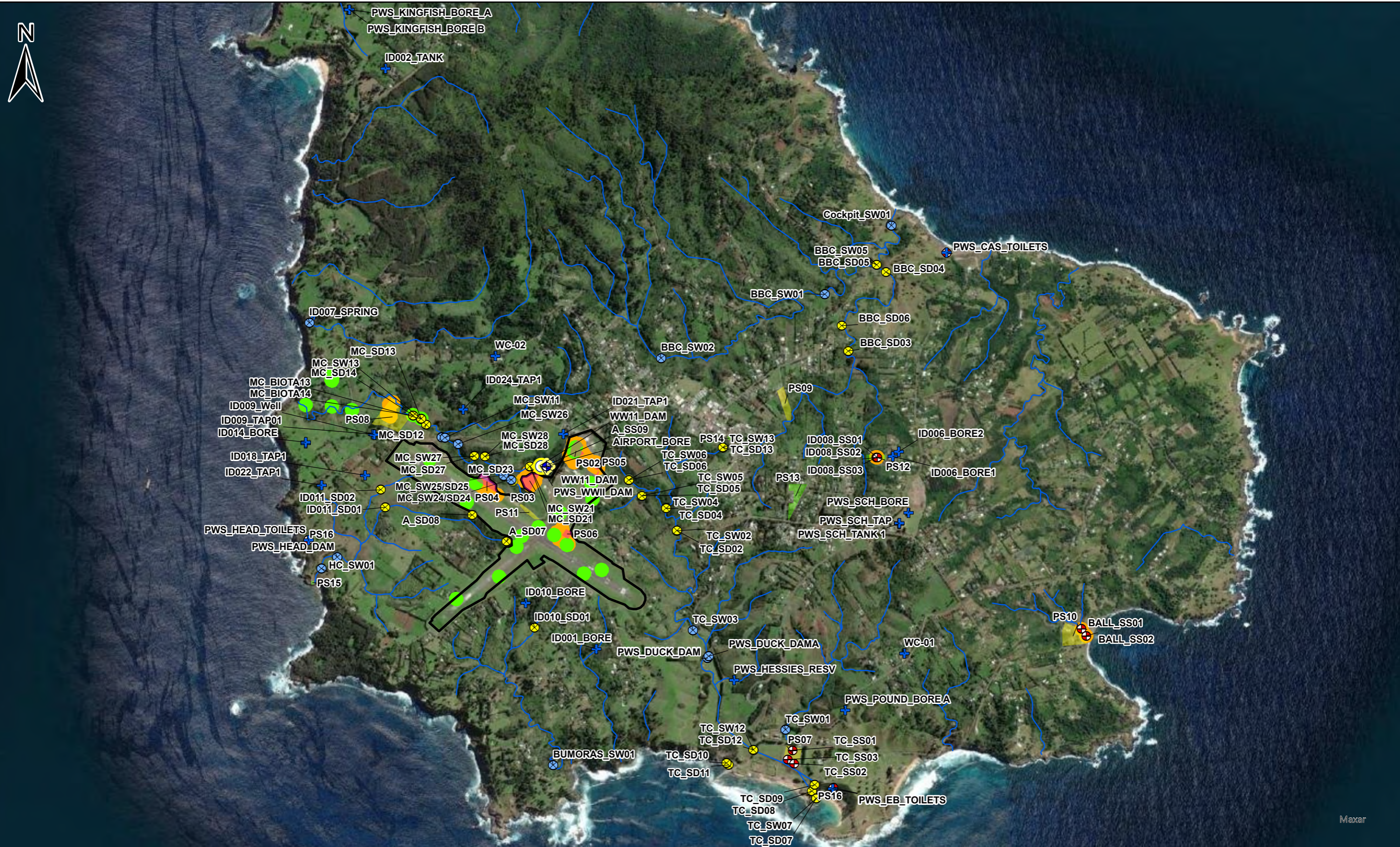
**Project:** PFAS Detailed Site Investigation

**Location:** Norfolk Island Airport  
Department for Infrastructure, Transport,  
Regional Development and Communications

**Client:**

© Senversa 2021 Path: S:\01\_Jobs\1.NSW\_Jobs\17776\_DITCRD\_NORFOLK\_DSI\17776\_backup.aprx

Last Edited by: fidelma.gurnett



- Legend:**
- Approximate Airport Boundary
  - PFAS Source Areas (Potential and Confirmed)
  - Group 1 Source Area
  - Group 2 Source Area
  - Group 3 Source Area
  - Group 4 Source Area
  - Sediment
  - + Water
  - + Soil
  - + Creeks
  - Airport Bore
  - WWII Dam
  - Sampled in 2020
  - Sampled in 2021

**Details:**

Data Sources:  
 Aerial imagery: Nearmap Pty Ltd  
 Vector Datasets: Open Street Maps

Created: S. Koroblitsas  
 PM: C. Sandiford  
 Approved: x  
 Date: 27/08/2021  
 Revision: 0

0 600 1,200 1,800  
 Metres

Datum/Projection: WGS 1984 Web Mercator Auxiliary Sphere Scale: 1:30,000(A3)

**Figure No:** A6K

**Title:** Sample Location Plan  
Rest of Island

**Project:** PFAS Detailed Site Investigation

**Location:** Norfolk Island International Airport  
Department for Infrastructure, Transport,  
Regional Development and Communications

**Client:**

© Senversa 2021 Path: S:\01\_Jobs\1\_NSW\_Jobs\17776\_DITCRD\_NORFOLK\_DSI\17776\_backup.aprx



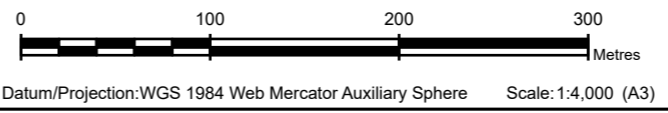
Legend:  
 Sum of PFHxS and PFOS (mg/kg) - Samples between 0 and 0.2 m below ground  
 ● <LOR  
 ● >LOR - 20  
 ● >20  
 □ Approximate Airport Boundary  
 — Elevation Contour (10 m)  
 ⊕ Airport Bore  
 — Creek Legend

● WWII Dam  
 PFAS Source Areas (Potential and Confirmed)  
 Legend  
 □ Group 1 Source Area  
 □ Group 2 Source Area  
 □ Group 3 Source Area  
 □ Group 4 Source Area

Sum of PFHxS and PFOS (mg/kg) - Samples between 0 and 0.2 m below ground  
 ■ <LOR - 0.05 mg/kg  
 ■ 0.05 - 0.1 mg/kg  
 ■ 0.1 - 0.5 mg/kg  
 ■ 0.5 - 1.0 mg/kg  
 ■ 1.0 - 5.0 mg/kg  
 ■ 5.0 - 10 mg/kg

**Details:**  
 Data Sources:  
 Aerial imagery: Nearmap Pty Ltd  
 Vector Datasets: Open Street Maps

Created: S. Koroblitsas  
 PM: C. Sandiford  
 Approved: x  
 Date: 6/10/2021  
 Revision: 0



**Figure No:** A7A  
**Title:** **Shallow Soil Investigation Results (PFOS+PFHxS) Norfolk Island Airport (Human Health Screening)**  
**Project:** PFAS Detailed Site Investigation  
**Location:** Norfolk Island International Airport  
 Department for Infrastructure, Transport,  
 Regional Development and Communications  
**Client:**

© Senversa 2021 Path: S:\01\_jobs\1\_NSW\_jobs\17776\_DITCRD\_NORFOLK\_DS\IC:17776\_019\_HHERA\_FG.aprx

Last Edited by: fidelma.gurnett

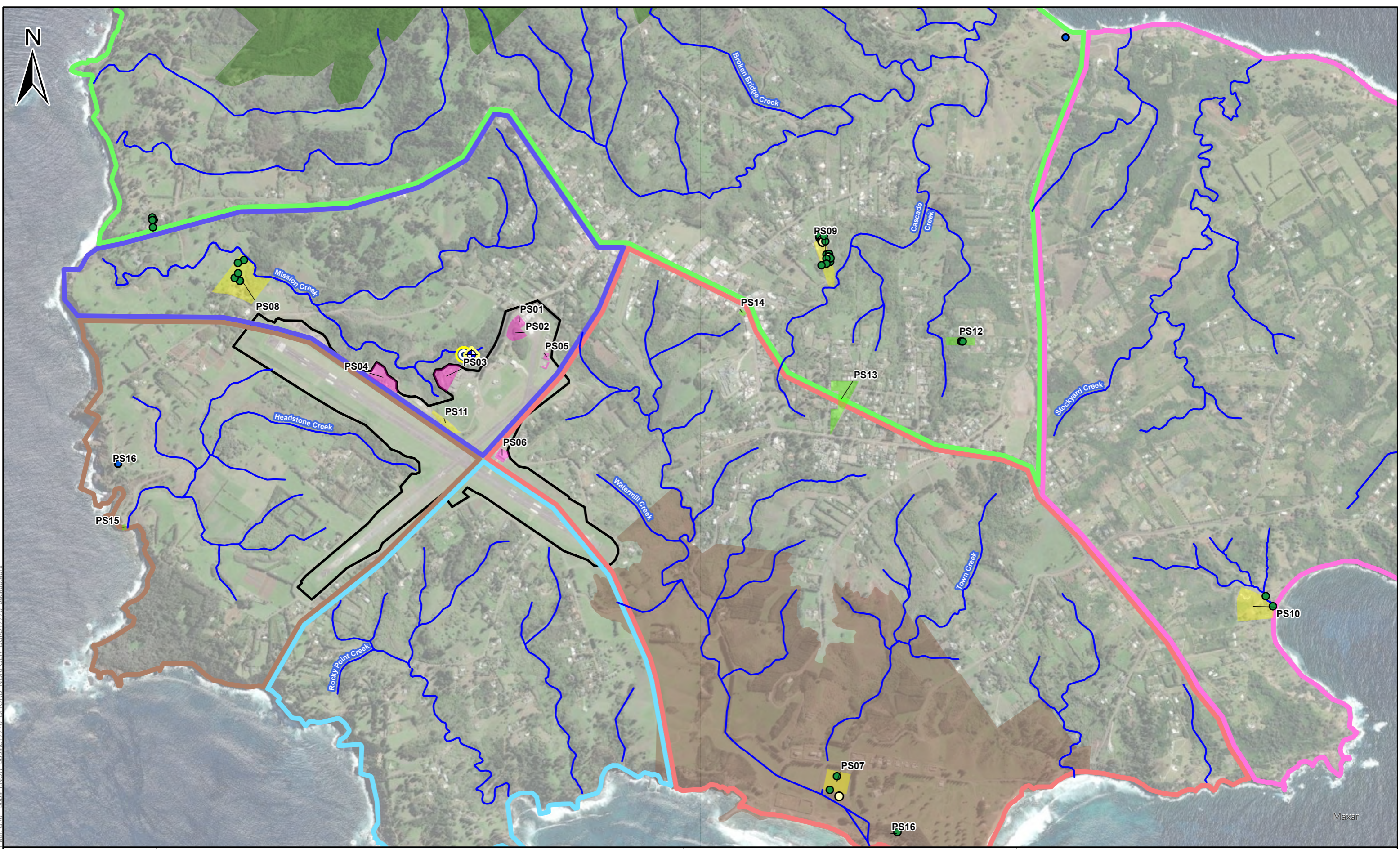


<b>Legend:</b> Sum of PFHxS and PFOS (mg/kg) - Samples deeper than 0.2 m below ground ● <LOR ● >LOR - 20 ● >20 — Creek □ Approximate Airport Boundary — Elevation Contour (10 m)		<b>PFAS Source Areas (Potential and Confirmed)</b> ■ Group 1 Source Area ■ Group 2 Source Area ■ Group 3 Source Area ■ Group 4 Source Area ⊕ Airport Bore ⊙ WWII Dam	
---	--	--	--

<b>Details:</b>	
Data Sources:	Created: S. Koroblitsas
Aerial imagery: Nearmap Pty Ltd	PM: C. Sandiford
Vector Datasets: Open Street Maps	Approved: x
	Date: 8/06/2021
	Revision: 0

Datum/Projection: WGS 1984 Web Mercator Auxiliary Sphere Scale: 1:4,000 (A3)

<b>Figure No:</b>	<b>A7B</b>
<b>Title:</b>	<b>Deeper Soil Investigation Results (PFOS+PFHxS) Norfolk Island Airport (Human Health Screening)</b>
<b>Project:</b>	PFAS Detailed Site Investigation
<b>Location:</b>	Norfolk Island International Airport Department for Infrastructure, Transport, Regional Development and Communications
<b>Client:</b>	



Path: S:\01\_Jobs\1\_NSW\_Jobs\17776\_DITCRD\_NORFOLK\_DSI\17776\_backup.aprx



**Legend:**  
Sum of PFHxS and PFOS (mg/kg)

- <LOR
- >LOR - 0.01
- 0.01-10
- 10-20
- >20
- Creek
- Approximate Airport Boundary

**Approximate Extent of Surface Water Catchments**

- Headstone Creek
- Mission Creek
- Mt Pitt / Broken Bridge Creek
- Rocky Point Creek
- Stockyard Creek
- Town Creek / Watermill Creek
- National Park
- Kingston and Arthurs Vale Historic Area (KAVHA)

**PFAS Source Areas (Potential and Confirmed)**

- Group 1 Source Area
- Group 2 Source Area
- Group 3 Source Area
- Group 4 Source Area
- + Airport Bore
- WWII Dam

**Details:**

Data Sources:  
Aerial imagery: Nearmap Pty Ltd  
Vector Datasets: Open Street Maps

Created: S. Koroblitsas  
PM: C. Sandiford  
Approved: x  
Date: 8/06/2021  
Revision: 0

0 500 1,000 1,500  
Metres

Datum/Projection: WGS 1984 Web Mercator Auxiliary Sphere Scale: 1:20,000(A3)

**Figure No:** A7C

**Title:** Soil Analytical Results (PFOS+PFHxS) Off-Site Locations (Human Health Screening)

**Project:** PFAS Detailed Site Investigation

**Location:** Norfolk Island International Airport  
Department for Infrastructure, Transport, Regional Development and Communications

**Client:**



**Legend:**

PFOS (mg/kg) - Samples between 0 and 0.2 m below ground

- <LOR
- >LOR - 0.01
- 0.01 - 1
- >1

- Creek
- Approximate Airport Boundary
- Elevation Contour (10 m)

PFAS Source Areas (Potential and Confirmed)

- Group 1 Source Area
- Group 2 Source Area
- Group 3 Source Area
- Group 4 Source Area
- Airport Bore
- WWII Dam



**Details:**

Data Sources:  
 Aerial imagery: Nearmap Pty Ltd  
 Vector Datasets: Open Street Maps

Created: S. Korobiltsas  
 PM: C. Sandiford  
 Approved: x  
 Date: 8/06/2021  
 Revision: 0



Datum/Projection: WGS 1984 Web Mercator Auxiliary Sphere Scale: 1:7,500 (A3)

**Figure No:** A8A

**Title:** **Shallow Soil Investigation Results (PFOS)  
 Norfolk Island Airport (Ecological Screening)**

**Project:** PFAS Detailed Site Investigation

**Location:** Norfolk Island International Airport  
 Department for Infrastructure, Transport,  
 Regional Development and Communications

**Client:**



Path: S:\01\_jobs\1\_NSW\_jobs\17776\_DITCROD\_NORFOLK\_DSIS\17776\_backup.aprx © Senversa 2021

**Legend:**

- Approximate Airport Boundary
- PFOS (mg/kg) - Samples deeper than 0.2 m below ground
- <LOR
- >LOR - 0.01
- 0.01 - 1
- >1
- Creek
- Elevation Contour (10 m)

**PFAS Source Areas (Potential and Confirmed)**

- Group 1 Source Area
- Group 2 Source Area
- Group 3 Source Area
- Group 4 Source Area
- WWII Dam
- Airport Bore



**Details:**

<p>Data Sources: Aerial imagery: Nearmap Pty Ltd Vector Datasets: Open Street Maps</p>	<p>Created: S. Koroblitsas PM: H. Pederson Approved: x Date: 8/06/2021 Revision: 0</p>
--	--

0 200 400 600 Metres

Datum/Projection: WGS 1984 Web Mercator Auxiliary Sphere Scale: 1:7,500 (A3)

**Figure No:** A8B

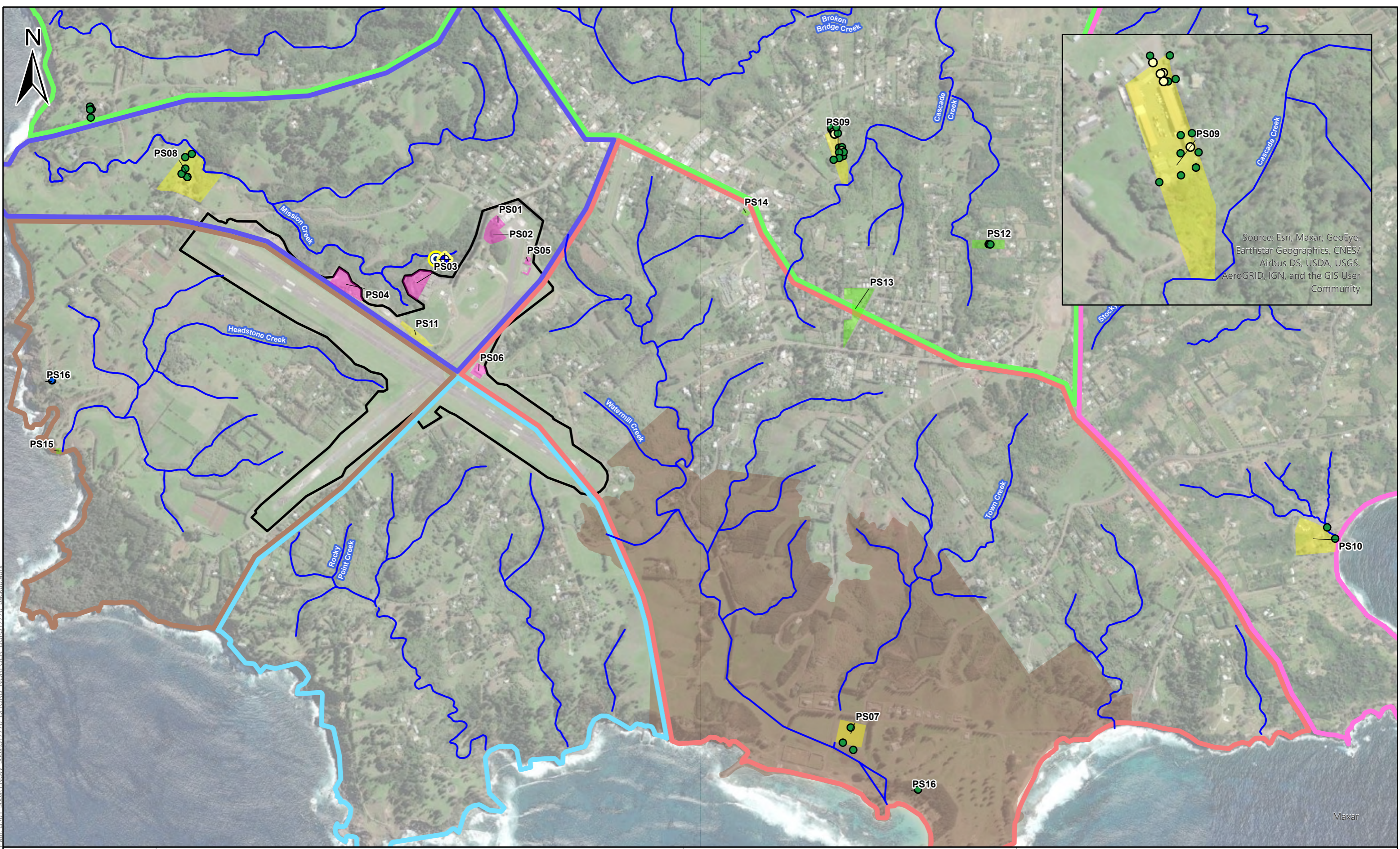
**Title:** Deeper Soil Investigation Results (PFOS) Norfolk Island Airport (Ecological Screening)

**Project:** PFAS Detailed Site Investigation

**Location:** Norfolk Island International Airport  
Department for Infrastructure, Transport, Regional Development and Communications

**Client:**

Last Edited by: Stefanos Koroblitsas



Source: Esri, Maxar, GeoEye, Earthstar Geographics, CNES/Airbus DS, USDA, USGS, AeroGRID, IGN, and the GIS User Community

Path: S:\01\_Jobs\1\_NSW\_Jobs\17776\_DITCRD\_NORFOLK\_DSI\17776\_backup.aprx



- Legend:**
- PFOS (mg/kg)**
- <LOR
  - >LOR - 0.01
  - 0.01 - 1
  - >1
- Approximate Extent of Surface Water Catchments**
- Headstone Creek
  - Mission Creek
  - Mt Pitt / Broken Bridge Creek
  - Rocky Point Creek
  - Stockyard Creek
  - Town Creek / Watermill Creek
  - Kingston and Arthurs Vale Historic Area (KAVHA)
- PFAS Source Areas (Potential and Confirmed)**
- Group 1 Source Area
  - Group 2 Source Area
  - Group 3 Source Area
  - Group 4 Source Area
- Other Symbols:**
- WWII Dam
  - Airport Bore

**Details:**

**Data Sources:**  
 Aerial imagery: Nearmap Pty Ltd  
 Vector Datasets: Open Street Maps

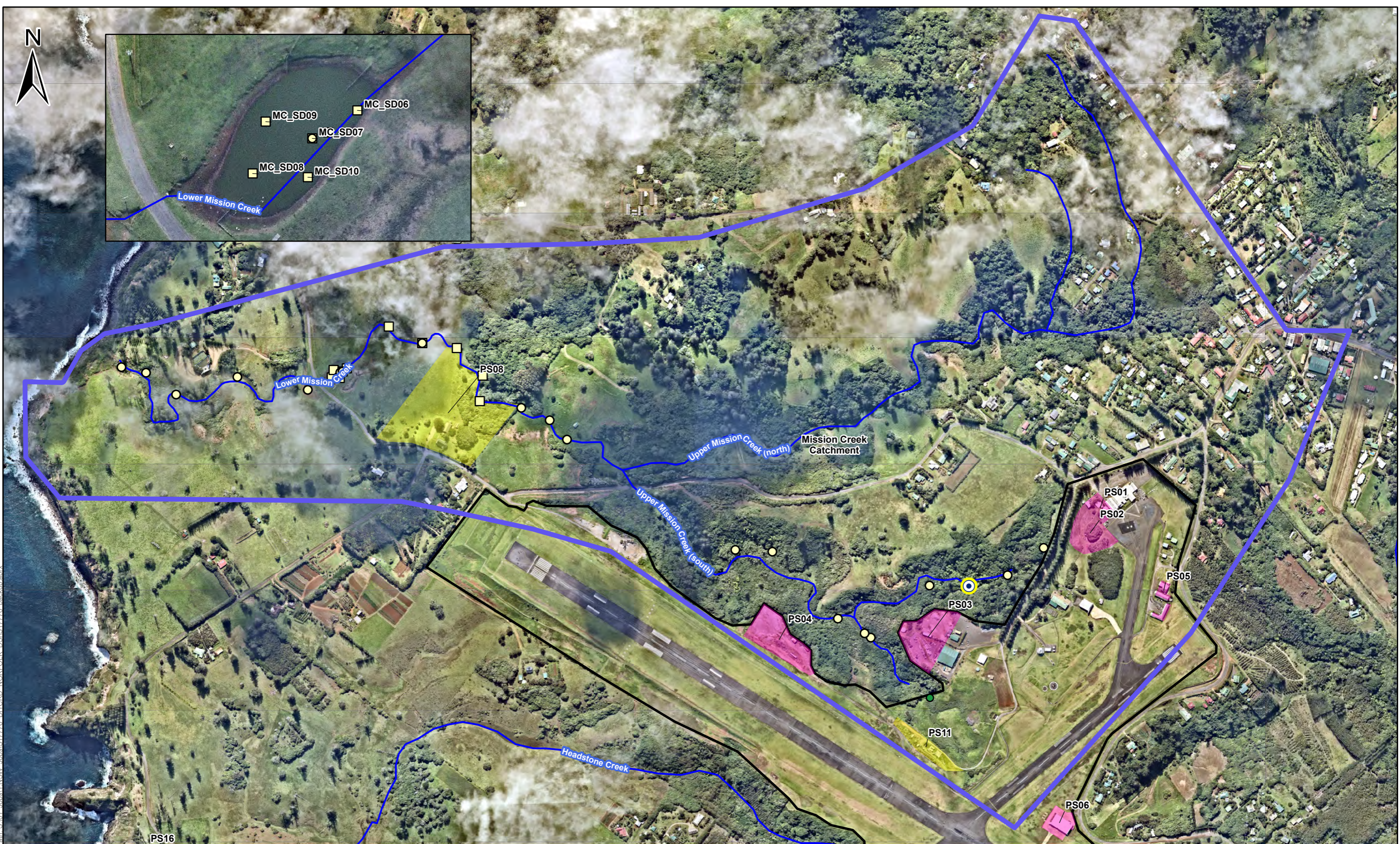
**Created:** S. Koroblitsas  
**PM:** C. Sandiford  
**Approved:** x  
**Date:** 8/06/2021  
**Revision:** 0

**Scale:** 1:18,000  
**Datum/Projection:** (A3)



**Figure No:** A8C  
**Title:** Soil Analytical Results (PFOS) – Off-Site Locations (Ecological Screening)  
**Project:** PFAS Detailed Site Investigation  
**Location:** Norfolk Island International Airport  
 Department for Infrastructure, Transport, Regional Development and Communications  
**Client:**





Path: S:\01\_Jobs\1\_NSW\_Jobs\17776\_DITCRD\_NORFOLK\_DSIS\17776\_backup.aprx



- Legend:**
- |  |  |  |
|--|--|--|
| <p>Sediment results: Sum of PFHxS and PFOS (mg/kg)</p> <p>- 2021 results</p> <ul style="list-style-type: none"> <li><span style="color: blue;">●</span> &lt;LOR</li> <li><span style="color: green;">●</span> &gt;LOR - 0.01</li> <li><span style="color: yellow;">●</span> 0.01 - 1</li> <li><span style="color: orange;">●</span> &gt;1</li> </ul> | <p>Sediment results: Sum of PFHxS and PFOS (mg/kg)</p> <p>- 2020 results</p> <ul style="list-style-type: none"> <li><span style="color: blue;">■</span> &lt;LOR</li> <li><span style="color: green;">■</span> &gt;LOR - 0.01</li> <li><span style="color: yellow;">■</span> 0.01 - 1</li> <li><span style="color: orange;">■</span> &gt;1</li> </ul> <p>Approximate Airport Boundary</p> | <ul style="list-style-type: none"> <li><span style="border-bottom: 1px solid blue; width: 20px; display: inline-block;"></span> Mission Creek Catchment</li> <li><span style="background-color: pink; width: 10px; height: 10px; display: inline-block;"></span> PFAS Source Areas (Potential and Confirmed)</li> <li><span style="background-color: yellow; width: 10px; height: 10px; display: inline-block;"></span> Group 1 Source Area</li> <li><span style="background-color: lightgreen; width: 10px; height: 10px; display: inline-block;"></span> Group 2 Source Area</li> <li><span style="background-color: lightblue; width: 10px; height: 10px; display: inline-block;"></span> Group 3 Source Area</li> <li><span style="background-color: lightyellow; width: 10px; height: 10px; display: inline-block;"></span> Group 4 Source Area</li> <li><span style="border: 1px solid black; border-radius: 50%; width: 10px; height: 10px; display: inline-block;"></span> WWII Dam</li> <li><span style="color: blue; font-weight: bold;">—</span> Creek</li> </ul> |
|--|--|--|

**Details:**

Data Sources:  
 Aerial imagery: Nearmap Pty Ltd  
 Vector Datasets: Open Street Maps

Created: S. Koroblitsas  
 PM: C. Sandiford  
 Approved: x  
 Date: 11/06/2021  
 Revision: 0

Datum/Projection: Scale: (A3) 1:8,500

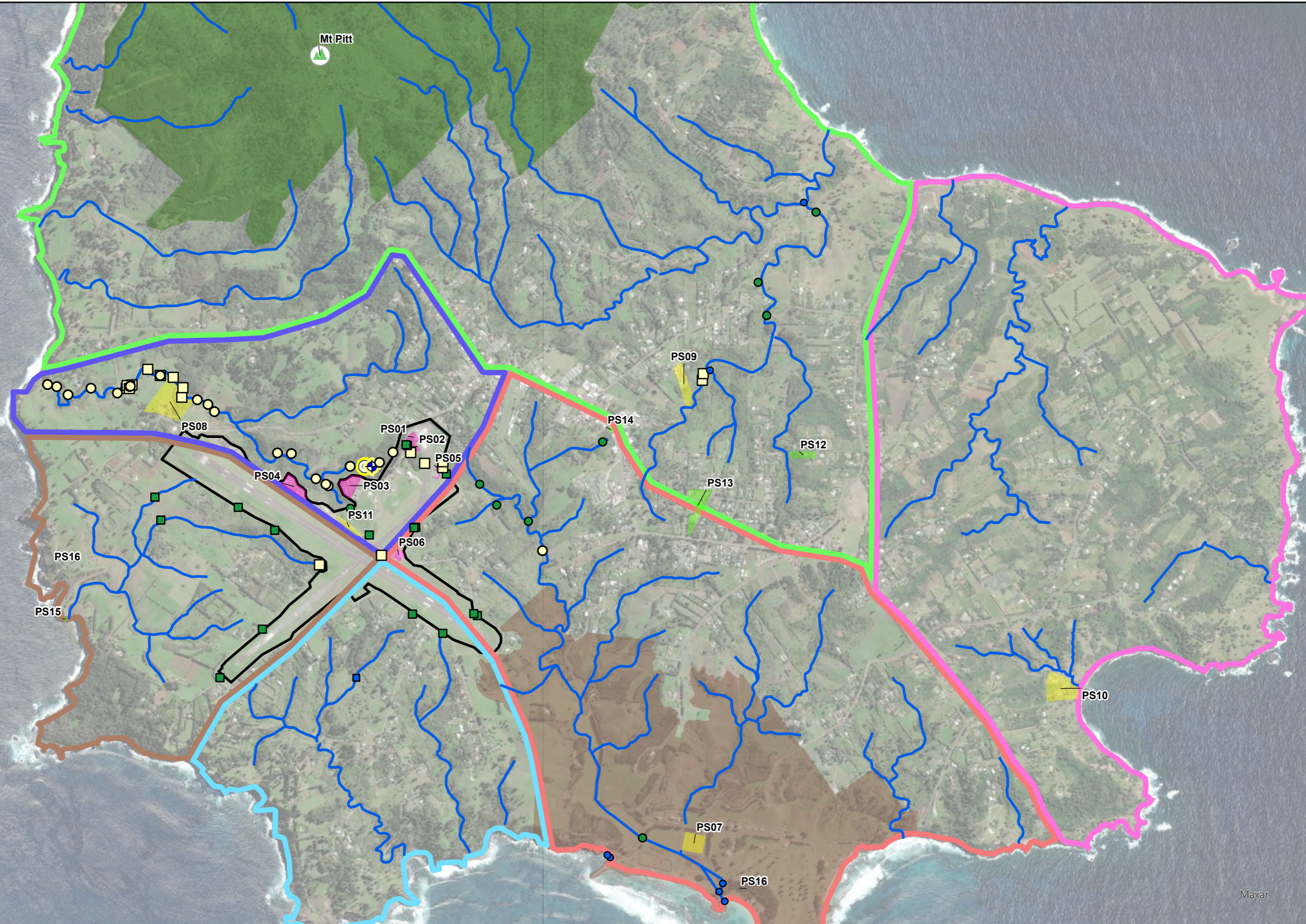
**Figure No:** A9A

**Title:** Sediment Analytical Results (PFOS+PFHxS)  
 Mission Creek Catchment (Human Health Screening)

**Project:** PFAS Detailed Site Investigation

**Location:** Norfolk Island International Airport  
 Department for Infrastructure, Transport,  
 Regional Development and Communications

**Client:**



**Legend:**

Sum of PFHxS and PFOS (mg/kg) - 2021 results

- <LOR
- >LOR - 0.01
- 0.01 - 1
- >1

Sum of PFHxS and PFOS (mg/kg) - 2020 results

- <LOR
- >LOR - 0.01
- 0.01 - 1
- >1

Approximate Airport Boundary

Approximate Extent of Surface Water Catchments

- Headstone Creek
- Mission Creek
- Mt Pitt / Broken Bridge Creek
- Rocky Point Creek
- Stockyard Creek
- Town Creek / Watermill Creek

Kingston and Arthurs Vale Historic Area (KAVHA)

PFAS Source Areas (Potential and Confirmed)

- Group 1 Source Area
- Group 2 Source Area
- Group 3 Source Area
- Group 4 Source Area

Airport Bore

WWII Dam

Creek

Mountain Peak

National Park

**Details:**

Data Sources:  
Aerial imagery: Nearmap Pty Ltd  
Vector Datasets: Open Street Maps

Created: S. Koroblitsas  
PM: C. Sandiford  
Approved: x  
Date: 11/06/2021  
Revision: 0

0 500 1,000 1,500 Metres

Datum/Projection: WGS 1984 Web Mercator Auxiliary Sphere Scale: 1:25,000(A3)

**Figure No:** A9B

**Title:** Sediment Analytical Results (PFOS+PFHxS) Wider Norfolk Island (Human Health Screening)

**Project:** PFAS Detailed Site Investigation

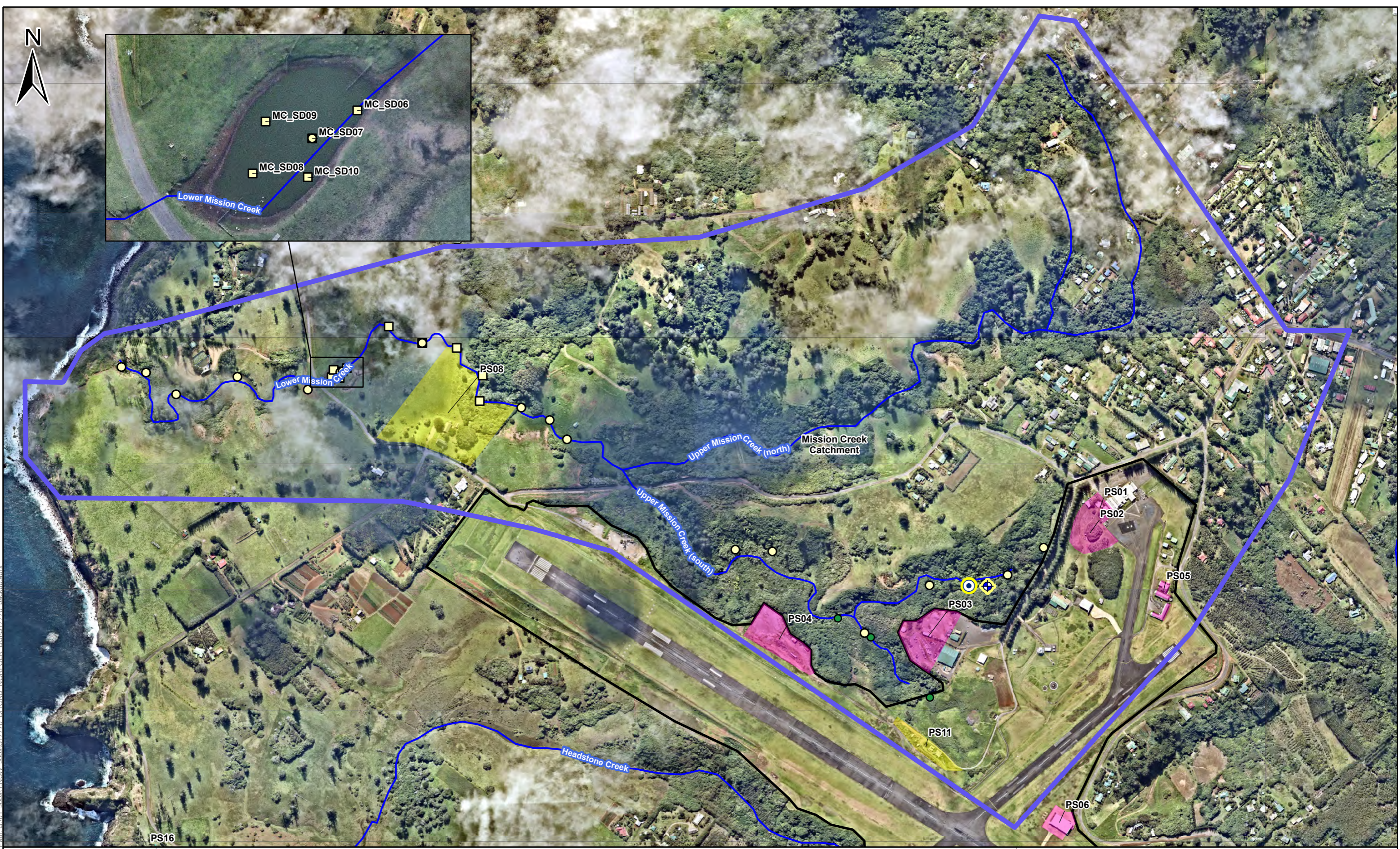
**Location:** Norfolk Island International Airport  
Department for Infrastructure, Transport, Regional Development and Communications

**Client:**



© Senversa 2021 Path: S:\01\_Jobs\1\_NSW\_Jobs\17776\_DITCRD\_NORFOLK\_DSI\17776\_backup.aprx

Last Edited by: Stefanos Koroblitsas



Legend:

Sediment results: PFOS (mg/kg) - 2021 results

- < LOR
- > LOR
- 0.01
- >1

Sediment results: PFOS (mg/kg) - 2020 results

- < LOR
- > LOR
- 0.01 - 1
- >1

Approximate Airport Boundary

Mission Creek Catchment

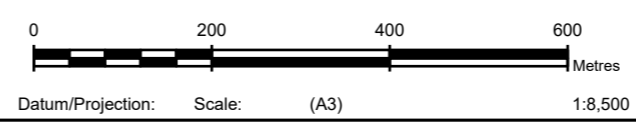
PFAS Source Areas (Potential and Confirmed)

- Group 1 Source Area
- Group 2 Source Area
- Group 3 Source Area
- Group 4 Source Area
- WWII Dam
- + Airport Bore
- Creek

**Details:**

Data Sources:  
 Aerial imagery: Nearmap Pty Ltd  
 Vector Datasets: Open Street Maps

Created: S. Koroblitsas  
 PM: C. Sandiford  
 Approved: x  
 Date: 11/06/2021  
 Revision: 0



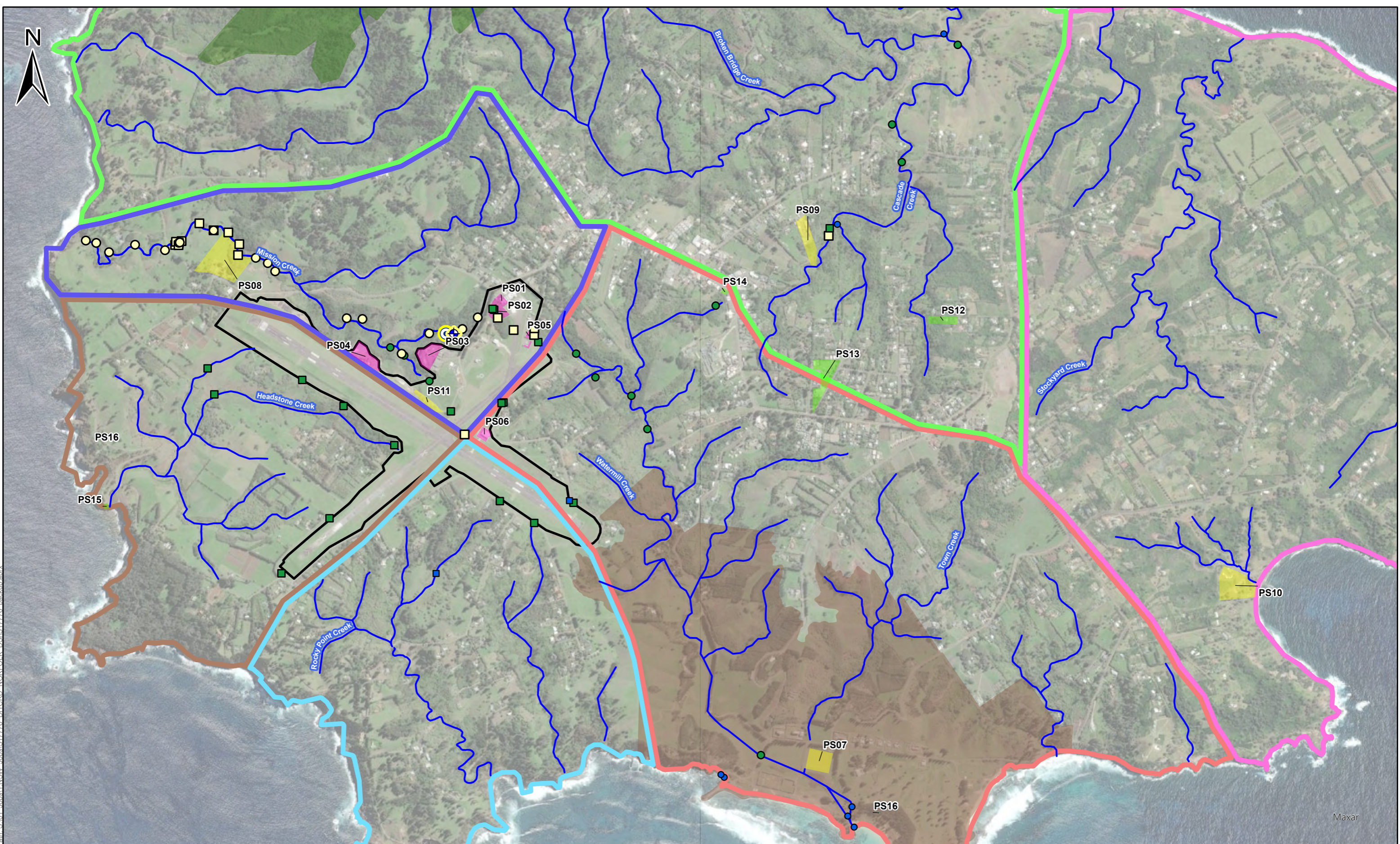
**Figure No:** A10A

**Title:** Sediment Analytical Results (PFOS) – Mission Creek Catchment (Ecological Screening)

**Project:** PFAS Detailed Site Investigation

**Location:** Norfolk Island International Airport  
 Department for Infrastructure, Transport, Regional Development and Communications

**Client:**



Path: S:\01\_Jobs\1\_NSW\_Jobs\17776\_DITCRD\_NORFOLK\_DSIS\17776\_backup.aprx



<p><b>Legend:</b></p> <p>PFOS (mg/kg) - 2021 results</p> <ul style="list-style-type: none"> <li><span style="color: blue;">●</span> &lt; LOR</li> <li><span style="color: green;">●</span> &gt; LOR</li> <li><span style="border: 1px solid black; border-radius: 50%; padding: 2px;">0.01</span></li> <li><span style="border: 1px solid black; border-radius: 50%; padding: 2px;">&gt;1</span></li> </ul> <p>PFOS (mg/kg) - 2020 results</p> <ul style="list-style-type: none"> <li><span style="border: 1px solid blue; border-radius: 50%; padding: 2px;">&lt; LOR</span></li> <li><span style="border: 1px solid green; border-radius: 50%; padding: 2px;">&gt; LOR</span></li> <li><span style="border: 1px solid black; border-radius: 50%; padding: 2px;">0.01 - 1</span></li> <li><span style="border: 1px solid orange; border-radius: 50%; padding: 2px;">&gt;1</span></li> </ul>	<ul style="list-style-type: none"> <li><span style="border: 1px solid black; display: inline-block; width: 10px; height: 10px;"></span> Approximate Airport Boundary</li> <li><span style="border-bottom: 1px solid blue; width: 10px; display: inline-block;"></span> Creek</li> <li><span style="border-bottom: 1px solid blue; width: 10px; display: inline-block;"></span> Approximate Extent of Surface Water Catchments</li> <li><span style="border-bottom: 1px solid brown; width: 10px; display: inline-block;"></span> Headstone Creek</li> <li><span style="border-bottom: 1px solid blue; width: 10px; display: inline-block;"></span> Mission Creek</li> <li><span style="border-bottom: 1px solid green; width: 10px; display: inline-block;"></span> Mt Pitt / Broken Bridge Creek</li> <li><span style="border-bottom: 1px solid cyan; width: 10px; display: inline-block;"></span> Rocky Point Creek</li> <li><span style="border-bottom: 1px solid pink; width: 10px; display: inline-block;"></span> Stockyard Creek</li> <li><span style="border-bottom: 1px solid red; width: 10px; display: inline-block;"></span> Town Creek / Watermill Creek</li> <li><span style="border: 1px solid black; border-radius: 50%; padding: 2px;"> </span> PFAS Source Areas (Potential and Confirmed)</li> <li><span style="background-color: yellow; border: 1px solid black; width: 10px; height: 10px; display: inline-block;"></span> Group 1 Source Area</li> </ul>	<ul style="list-style-type: none"> <li><span style="background-color: yellow; border: 1px solid black; width: 10px; height: 10px; display: inline-block;"></span> Group 2 Source Area</li> <li><span style="background-color: lightgreen; border: 1px solid black; width: 10px; height: 10px; display: inline-block;"></span> Group 3 Source Area</li> <li><span style="background-color: lightblue; border: 1px solid black; width: 10px; height: 10px; display: inline-block;"></span> Group 4 Source Area</li> </ul> <p>Areas of Significance</p> <ul style="list-style-type: none"> <li><span style="background-color: #c0c0c0; width: 10px; height: 10px; display: inline-block;"></span> National Park</li> <li><span style="background-color: #808080; width: 10px; height: 10px; display: inline-block;"></span> Kingston and Arthurs Vale Historic Area (KAVHA)</li> <li><span style="border: 1px solid black; border-radius: 50%; padding: 2px;"> </span> Airport Bore</li> <li><span style="border: 1px solid blue; border-radius: 50%; padding: 2px;"> </span> WWII Dam</li> </ul>
--	---	--

<p><b>Details:</b></p> <p>Data Sources: Aerial imagery: Nearmap Pty Ltd Vector Datasets: Open Street Maps</p>	<p>Created: S. Koroblitsas PM: C. Sandiford Approved: x Date: 8/06/2021 Revision: 0</p>
<p>0 400 800 1,200 Metres</p>	
<p>Datum/Projection: WGS 1984 Web Mercator Auxiliary Sphere Scale: 1:20,000(A3)</p>	

<b>Figure No:</b>	<b>A10B</b>
<b>Title:</b>	<b>Sediment Analytical Results (PFOS) Wider Norfolk Island (Ecological Screening)</b>
<b>Project:</b>	PFAS Detailed Site Investigation
<b>Location:</b>	Norfolk Island International Airport Department for Infrastructure, Transport, Regional Development and Communications
<b>Client:</b>	



Legend:  
 Leachable Soil Results (PFOS+PFHxS, µg/L)  
 Samples between 0 and 0.2 m below ground

- < LOR
- >LOR - 1.0
- 1.0 - 10
- >10

Approximate Airport Boundary  
 Elevation Contour (10 m)

PFAS Source Areas (Potential and Confirmed)

- Group 1 Source Area
- Group 2 Source Area
- Group 3 Source Area
- Group 4 Source Area
- WWII Dam
- ⊕ Airport Bore
- Creek

**Details:**

Data Sources:	Created:	S. Koroblitsas
Aerial imagery: Nearmap Pty Ltd	PM:	C. Sandiford
Vector Datasets: Open Street Maps	Approved:	x
	Date:	11/06/2021
	Revision:	0



Datum/Projection: WGS 1984 Web Mercator Auxiliary Sphere Scale: 1:4,000 (A3)

**Figure No:** A11A  
**Title:** **Shallow Leachable Soil Analytical Results (PFOS+PFHxS) Norfolk Island Airport**  
**Project:** PFAS Detailed Site Investigation  
**Location:** Norfolk Island International Airport  
 Department for Infrastructure, Transport, Regional Development and Communications  
**Client:**



**Legend:**  
 Leachable Soil Results (PFOS+PFHxS, µg/L)  
 Samples deeper than 0.2 m below ground

- < LOR
- >LOR - 1.0
- 1.0 - 10
- >10
- Approximate Airport Boundary

**PFAS Source Areas (Potential and Confirmed)**

- Group 1 Source Area
- Group 2 Source Area
- Group 3 Source Area
- Group 4 Source Area
- ⊕ Airport Bore
- ⊙ WWII Dam
- Creek
- Elevation Contour (10 m)

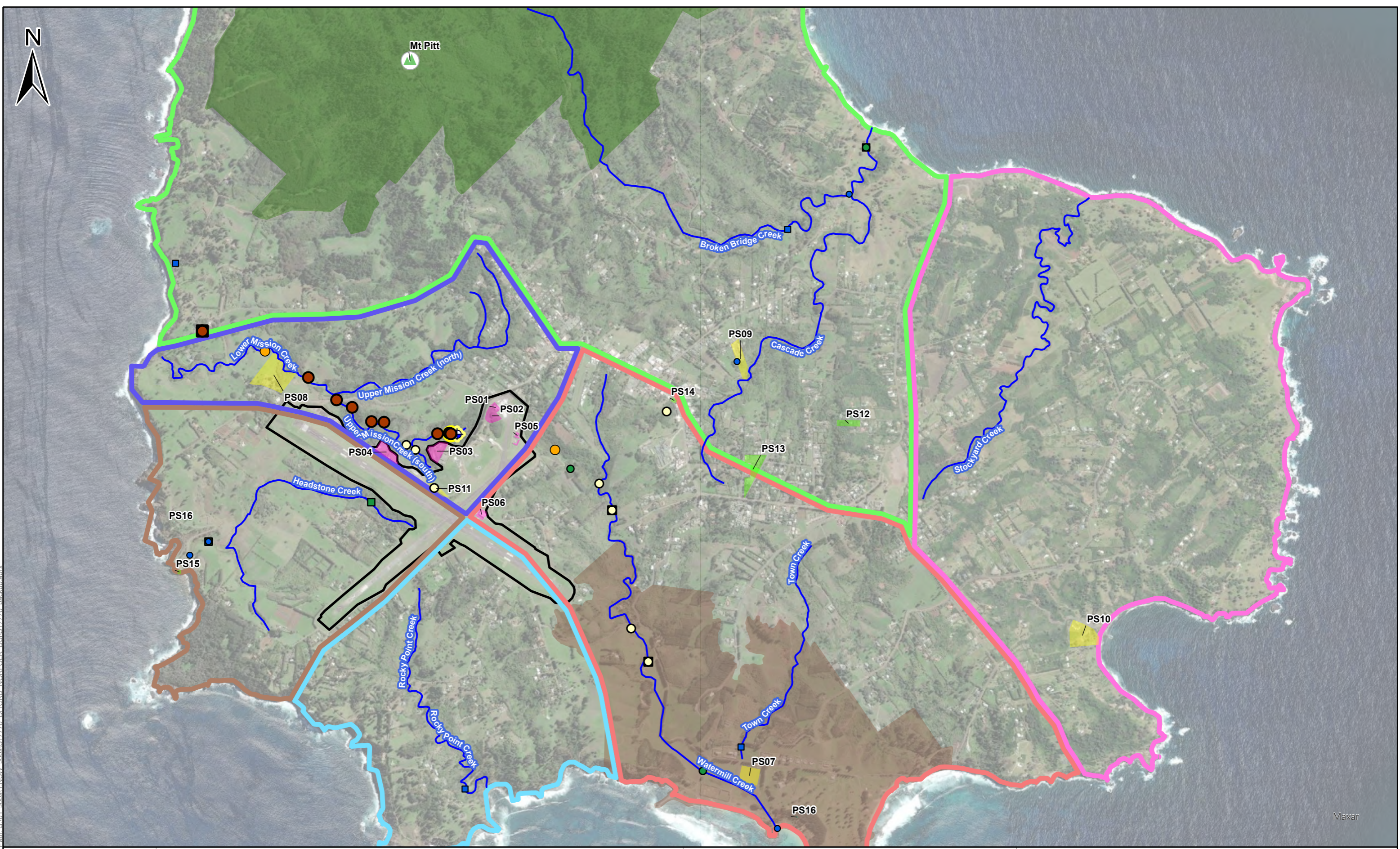
**Details:**

Data Sources:	Created:	S. Koroblitsas
Aerial imagery: Nearmap Pty Ltd	PM:	C. Sandiford
Vector Datasets: Open Street Maps	Approved:	x
	Date:	11/06/2021
	Revision:	0



Datum/Projection: WGS 1984 Web Mercator Auxiliary Sphere Scale: 1:4,000 (A3)

**Figure No:** A11B  
**Title:** Deeper Leachable Soil Analytical Results (PFOS+PFHxS) Norfolk Island Airport  
**Project:** PFAS Detailed Site Investigation  
**Location:** Norfolk Island International Airport  
 Department for Infrastructure, Transport, Regional Development and Communications  
**Client:**



Path: S:\01\_Jobs\1\_NSW\_Jobs\17776\_DITCRD\_NORFOLK\_DSI\17776\_backup.aprx



- Legend:**
- Sum of PFHxS and PFOS (µg/L) 2021 Results
- <LOR
  - >LOR - 0.07
  - 0.07 - 0.7
  - 0.7 - 2
  - >2
- Sum of PFHxS and PFOS (µg/L) 2020 Results
- <LOR
  - >LOR - 0.07
  - 0.07 - 0.7
  - 0.7 - 2
- >2
  - Approximate Airport Boundary
  - Approximate Extent of Surface Water Catchments
  - Headstone Creek
  - Mission Creek
  - Mt Pitt / Broken Bridge Creek
  - Rocky Point Creek
  - Stockyard Creek
  - Town Creek / Watermill Creek
  - ▲ Mountain Peak
  - National Park
  - Kingston and Arthurs Vale Historic Area (KAVHA)
  - PFAS Source Areas (Potential and Confirmed)
    - Group 1 Source Area
    - Group 2 Source Area
    - Group 3 Source Area
    - Group 4 Source Area
  - WWII Dam
  - Airport Bore
  - Creek

**Details:**

Data Sources:  
 Aerial imagery: Nearmap Pty Ltd  
 Vector Datasets: Open Street Maps

Created: S. Koroblitsas  
 PM: C. Sandiford  
 Approved: x  
 Date: 11/06/2021  
 Revision: 0

0 500 1,000 1,500 Metres

Datum/Projection: WGS 1984 Web Mercator Auxiliary Sphere Scale: 1:25,000(A3)

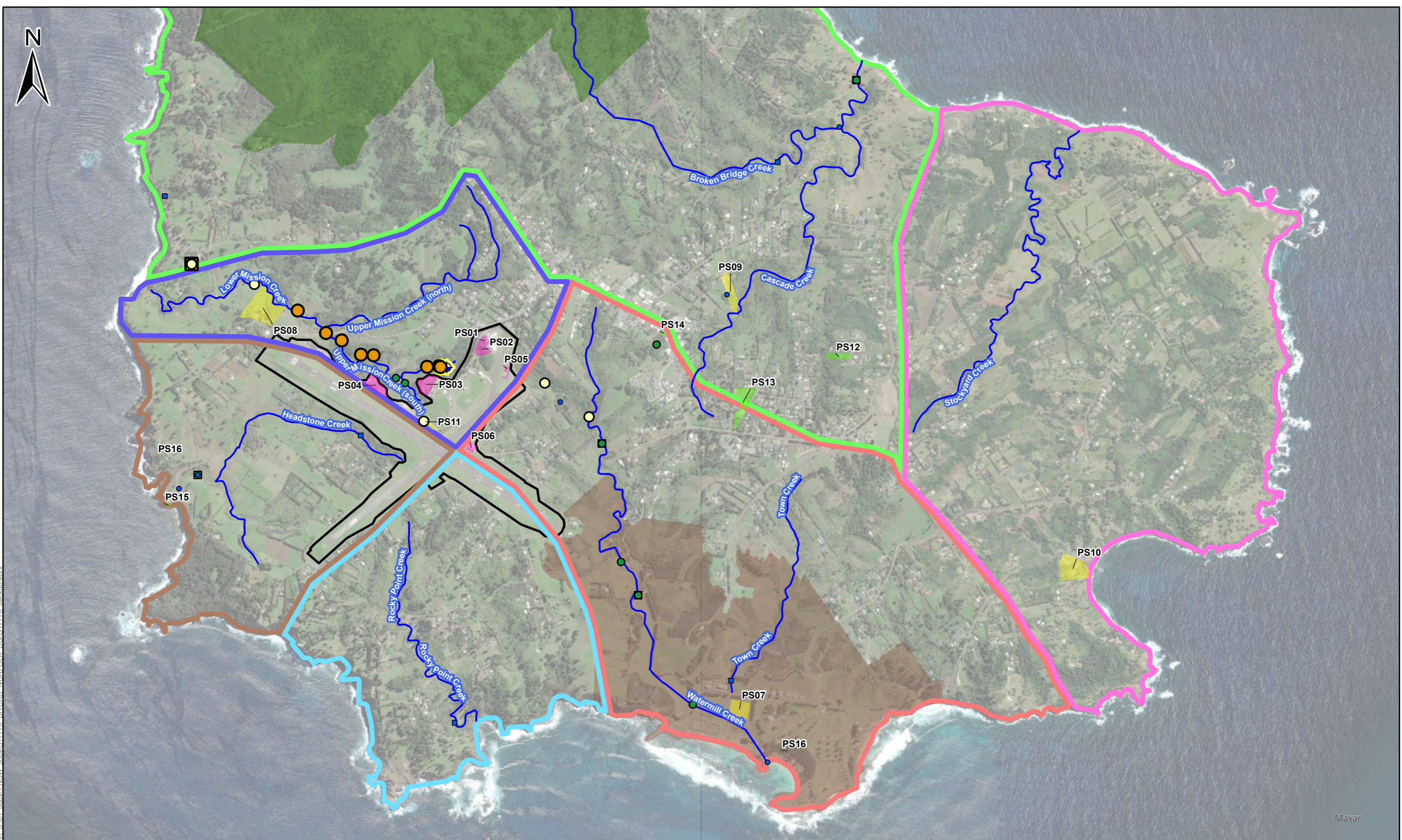
**Figure No:** 12A

**Title:** Surface Water Analytical Results (PFOS+PFHxS) On and Off-Site Locations (Human Health Screening)

**Project:** PFAS Detailed Site Investigation

**Location:** Norfolk Island International Airport  
 Department for Infrastructure, Transport,  
 Regional Development and Communications

**Client:**



Path: S:\01\_Jobs\1\_NSW\_Jobs\17776\_DITCRD\_NORFOLK\_DSI\17776\_backup.aprx



- Legend:**
- PFOS (µg/L) 2021 Results
    - <LOR
    - >LOR - 0.13
    - 0.13 - 2.0
    - >2.0
  - PFOS (µg/L) 2020 Results
    - <LOR
    - >LOR - 0.13
    - 0.13 - 2.0
    - >2.0
  - Approximate Airport Boundary
  - Approximate Extent of Surface Water Catchments
  - Headstone Creek
  - Mission Creek
  - Mt Pitt / Broken Bridge Creek
  - Rocky Point Creek
  - Stockyard Creek
  - Town Creek / Watermill Creek
  - ▲ Mountain Peak
  - National Park
  - Kingston and Arthurs Vale Historic Area (KAVHA)
  - PFAS Source Areas (Potential and Confirmed)
    - Group 1 Source Area
    - Group 2 Source Area
    - Group 3 Source Area
    - Group 4 Source Area
  - WWII Dam
  - Airport Bore
  - Creek

**Details:**

Data Sources:  
 Aerial imagery: Nearmap Pty Ltd  
 Vector Datasets: Open Street Maps

Created: S. Koroblitsas  
 PM: C. Sandiford  
 Approved: x  
 Date: 11/06/2021  
 Revision: 0

0 500 1,000 1,500 Metres

Datum/Projection: WGS 1984 Web Mercator Auxiliary Sphere Scale: 1:25,000(A3)

**Figure No:** A12B

**Title:** Surface Water Analytical Results (PFOS) On and Off-Site Locations (Ecological Screening)

**Project:** PFAS Detailed Site Investigation

**Location:** Norfolk Island International Airport  
 Department for Infrastructure, Transport,  
 Regional Development and Communications

**Client:**

Maxar





Path: S:\01\_jobs\1\_NSW\_jobs\17776\_DITCRD\_NORFOLK\_DSIS\17776\_backup.aprx



- Legend:**
- |  |  |  |
|--|--|--|
| <p>Sum of PFHxS and PFOS (µg/L) 2020 Results</p> <ul style="list-style-type: none"> <li><span style="display: inline-block; width: 10px; height: 10px; background-color: blue; border: 1px solid black; margin-right: 5px;"></span> &lt;LOR</li> <li><span style="display: inline-block; width: 10px; height: 10px; background-color: green; border: 1px solid black; margin-right: 5px;"></span> &gt;LOR - 0.07</li> <li><span style="display: inline-block; width: 10px; height: 10px; background-color: yellow; border: 1px solid black; margin-right: 5px;"></span> 0.07 - 0.7</li> <li><span style="display: inline-block; width: 10px; height: 10px; background-color: orange; border: 1px solid black; margin-right: 5px;"></span> 0.7 - 2</li> <li><span style="display: inline-block; width: 10px; height: 10px; background-color: brown; border: 1px solid black; margin-right: 5px;"></span> &gt;2</li> </ul> | <p>Sum of PFHxS and PFOS (µg/L) 2021 Results</p> <ul style="list-style-type: none"> <li><span style="display: inline-block; width: 10px; height: 10px; background-color: blue; border: 1px solid black; border-radius: 50%; margin-right: 5px;"></span> &lt;LOR</li> <li><span style="display: inline-block; width: 10px; height: 10px; background-color: green; border: 1px solid black; border-radius: 50%; margin-right: 5px;"></span> &gt;LOR - 0.07</li> <li><span style="display: inline-block; width: 10px; height: 10px; background-color: yellow; border: 1px solid black; border-radius: 50%; margin-right: 5px;"></span> 0.07 - 0.7</li> <li><span style="display: inline-block; width: 10px; height: 10px; background-color: orange; border: 1px solid black; border-radius: 50%; margin-right: 5px;"></span> 0.7 - 2</li> <li><span style="display: inline-block; width: 10px; height: 10px; background-color: brown; border: 1px solid black; border-radius: 50%; margin-right: 5px;"></span> &gt;2</li> <li><span style="display: inline-block; width: 10px; height: 10px; border: 1px solid black; margin-right: 5px;"></span> Approximate Airport Boundary</li> </ul> | <ul style="list-style-type: none"> <li><span style="display: inline-block; width: 10px; height: 10px; border-bottom: 2px solid blue; margin-right: 5px;"></span> Mission Creek Catchment</li> <li><span style="display: inline-block; width: 10px; height: 10px; background-color: pink; border: 1px solid black; margin-right: 5px;"></span> PFAS Source Areas (Potential and Confirmed)</li> <li><span style="display: inline-block; width: 10px; height: 10px; background-color: lightpink; border: 1px solid black; margin-right: 5px;"></span> Group 1 Source Area</li> <li><span style="display: inline-block; width: 10px; height: 10px; background-color: yellow; border: 1px solid black; margin-right: 5px;"></span> Group 2 Source Area</li> <li><span style="display: inline-block; width: 10px; height: 10px; background-color: lightgreen; border: 1px solid black; margin-right: 5px;"></span> Group 3 Source Area</li> <li><span style="display: inline-block; width: 10px; height: 10px; background-color: lightblue; border: 1px solid black; margin-right: 5px;"></span> Group 4 Source Area</li> <li><span style="display: inline-block; width: 10px; height: 10px; border: 1px solid blue; border-radius: 50%; margin-right: 5px;"></span> WWII Dam</li> <li><span style="display: inline-block; width: 10px; height: 10px; border-bottom: 2px solid blue; margin-right: 5px;"></span> Creek</li> </ul> |
|--|--|--|

**Details:**

Data Sources:  
 Aerial imagery: Nearmap Pty Ltd  
 Vector Datasets: Open Street Maps

Created: S. Koroblitsas  
 PM: C. Sandiford  
 Approved: x  
 Date: 11/06/2021  
 Revision: 0

0 80 160 240  
 Metres

Datum/Projection: WGS 1984 Web Mercator Auxiliary Sphere Scale: 1:3,500 (A3)

**Figure No:** A12C

**Title:** Bore, Tap and Tank Results (PFOS+PFHxS) Norfolk Island Airport

**Project:** PFAS Detailed Site Investigation

**Location:** Norfolk Island International Airport  
 Department for Infrastructure, Transport,  
 Regional Development and Communications

**Client:**

Last Edited by: Stefanos Koroblitsas



Path: S:\01\_Jobs\1\_NSW\_Jobs\17776\_DITCRD\_NORFOLK\_DSI\17776\_backup.aprx



- Legend:**
- Sum of PFHxS and PFOS (µg/L) 2021 Results
    - <LOR
    - >LOR - 0.07
    - 0.07 - 7.0
    - >7.0
  - Sum of PFHxS and PFOS (µg/L) 2020 Results
    - <LOR
    - >LOR - 0.07
    - 0.07 - 7.0
    - >7.0
  - Approximate Airport Boundary
  - Approximate Extent of Surface Water Catchments
    - Headstone Creek
    - Mission Creek
    - Mt Pitt / Broken Bridge Creek
    - Rocky Point Creek
    - Stockyard Creek
    - Town Creek / Watermill Creek
  - Mountain Peak
  - National Park
  - Kingston and Arthurs Vale Historic Area (KAVHA)
  - PFAS Source Areas (Potential and Confirmed)
    - Group 1 Source Area
    - Group 2 Source Area
    - Group 3 Source Area
    - Group 4 Source Area
  - WWII Dam
  - Airport Bore

**Details:**

Data Sources:  
 Aerial imagery: Nearmap Pty Ltd  
 Vector Datasets: Open Street Maps

Created: S. Koroblitsas  
 PM: C. Sandiford  
 Approved: x  
 Date: 8/06/2021  
 Revision: 0

0 600 1,200 1,800 Metres

Datum/Projection: Scale: (A3) 1:30,000

**Figure No:** 12D

**Title:** Bore, Tap and Tank Results (PFOS+PFHxS) On and Off-Site Locations

**Project:** PFAS Detailed Site Investigation

**Location:** Norfolk Island International Airport  
 Department for Infrastructure, Transport,  
 Regional Development and Communications

**Client:**

Maxar

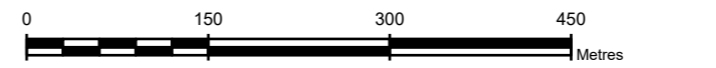


Legend:  
 Sum of PFHxS and PFOS (mg/kg) \*Size of result based on PFOS result only  
 ● <LOR  
 ○ >LOR  
 □ Approximate Airport Boundary  
 — Elevation Contour (10 m)  
 ⊕ Airport Bore

● WWII Dam  
 PFAS Source Areas (Potential and Confirmed)  
 ■ Group 1 Source Area  
 ■ Group 2 Source Area  
 ■ Group 3 Source Area  
 ■ Group 4 Source Area  
 — Creek

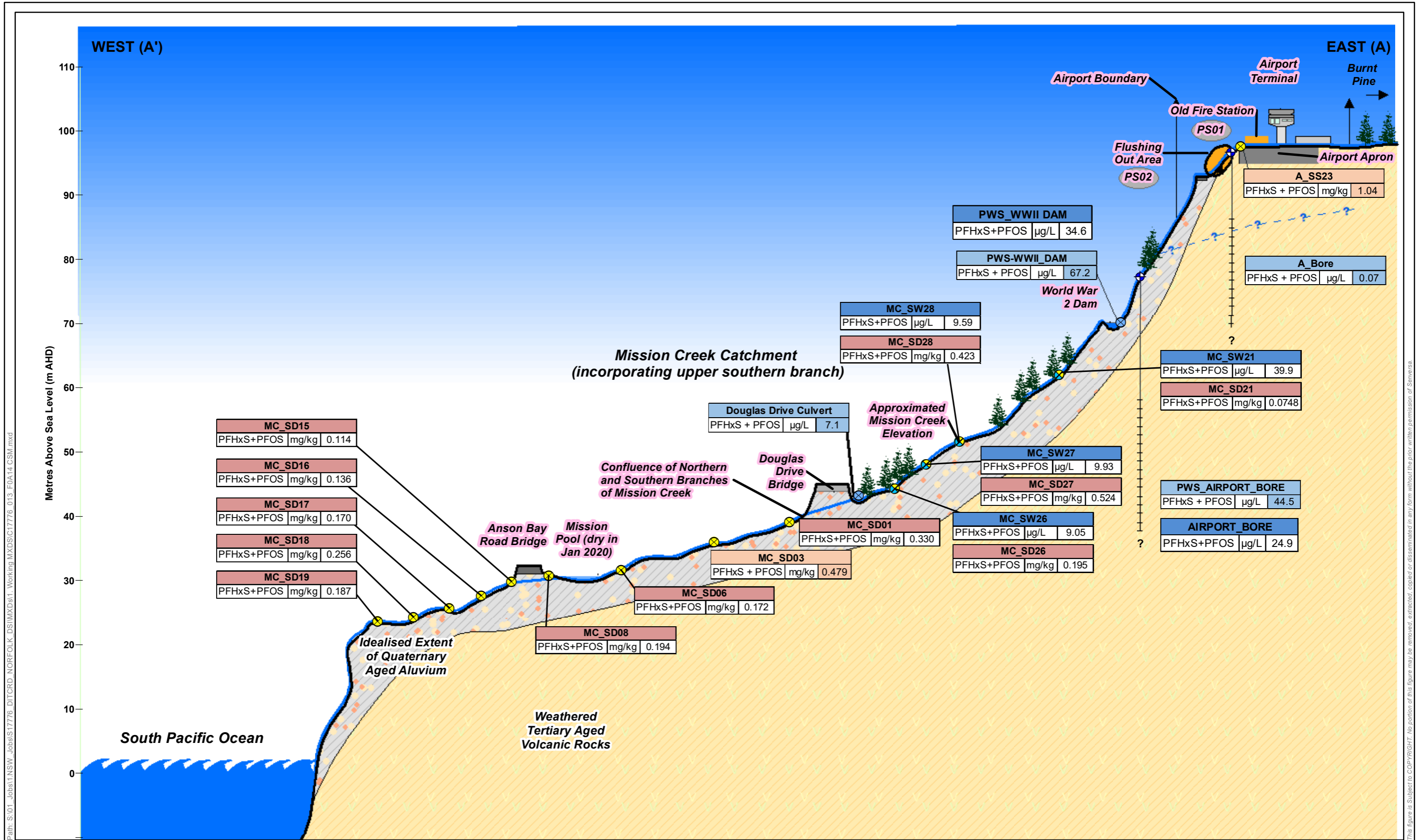
**Details:**

Data Sources:  
 Aerial Imagery: Nearmap Pty Ltd  
 Vector Datasets: Open Street Maps  
 Created: S. Koroblitsas  
 PM: C. Sandiford  
 Approved: x  
 Date: 11/06/2021  
 Revision: 0



Datum/Projection: WGS 1984 Web Mercator Auxiliary Sphere Scale: 1:6,250 (A3)

**Figure No:** A13  
**Title:** Grass Analytical Results (PFOS, PFHxS) On and Off-Site Locations  
**Project:** PFAS Detailed Site Investigation  
**Location:** Norfolk Island International Airport  
 Department for Infrastructure, Transport, Regional Development and Communications  
**Client:**



Path: S:\01\_Jobs\11\_NSW\_Jobs\11\_NSW\_Working\MXSD\117776\_013\_F0A14\_CSM.mxd

This figure is Subject to COPYRIGHT. No portion of this figure may be removed, extracted, copied or disseminated in any form without the prior written permission of Senversa.

Address: Level 6, 15 William Street  
Melbourne VIC 3000  
Phone: (03) 9606 0070  
Website: www.senversa.com.au

**Legend**

- ⊗ Surface Water /Sediment Sample Location
- ⊗ Soil/Sediment Sample Location
- ⊗ Surface Water Sample Location
- ⊕ Groundwater Bore
- ? Inferred Water Table Aquifer
- Apron
- Idealised Extent of Quaternary Aged Alluvium
- Weathered Tertiary Aged Volcanic Rocks

**Estimated Screen Length**

Sample ID	Concentration of PFHxS + PFOS in Soil or Sediment - mg/kg (January 2020)
MC_SD15	0.114
MC_SD16	0.136
MC_SD17	0.170
MC_SD18	0.256
MC_SD19	0.187
MC_SD01	0.330
MC_SD03	0.479
MC_SD06	0.172
MC_SD08	0.194
MC_SD21	0.0748
MC_SD26	0.195
MC_SD27	0.524
MC_SD28	0.423
MC_SW21	39.9
MC_SW26	9.05
MC_SW27	9.93
MC_SW28	9.59
PWS_AIRPORT_BORE	44.5
PWS_WWII_DAM	34.6
PWS-WWII_DAM	67.2
A_Bore	0.07
AIRPORT_BORE	24.9
A_SS23	1.04

Designed:	C. Sandiford	Date:	11/06/2021
Drawn:	S. Koroblitsas	Revision:	0
Checked:		Scale:	1:110 (A3)
File:	C17776_013_F0A14_CSM		

0 1 2 4 6 8 Metres

Datum/Projection:GDA 1994 MGA Zone 55

<b>Figure No:</b>	<b>A14</b>
<b>Title:</b>	<b>Conceptual Site Model – Airport &amp; Mission Creek Catchment Hydrogeological Cross Section Plan</b>
<b>Project:</b>	PFAS Detailed Site Investigation
<b>Location:</b>	Norfolk Island International Airport Department for Infrastructure, Transport, Regional Development and Communications
<b>Client:</b>	