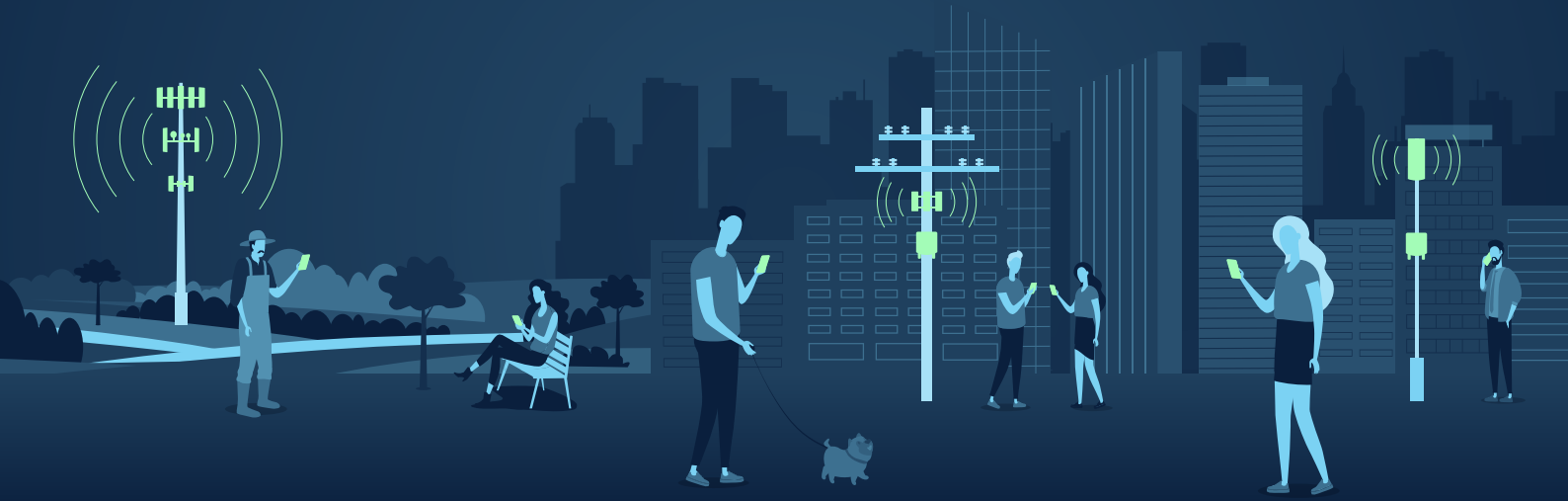




Australian Government

Digital equity and inclusion

In communities across Australia, wireless communication is essential for digital inclusion and national productivity growth. It helps people access healthcare and support services, remote education, employment and entertainment. It also enables them to stay connected to loved ones.



Backed by evidence

In Australia, telecommunications towers, transmitters, antennas and other equipment are required by law to operate within strict regulations that are backed by scientific evidence to ensure they operate safely in your community.

To provide necessary coverage and capacity, these facilities need to be installed close to the area they are expected to service and safety regulations apply to this requirement.



Essential access

In an increasingly digital world, accessing improved connectivity is no longer a luxury – it's essential.

As many services shift to digital-only models, communities cannot fully participate in modern society without this connectivity and the telecommunications facilities that enable it.



Telecommunications infrastructure facilitates connectivity

- It drives productivity growth and enables participation in our digital society.
- Reliable mobile service coverage is essential for communities regardless of their location.

In Australia, electromagnetic energy (EME) from telecommunications facilities and infrastructure is researched, regulated and safe.

Find out more at eme.gov.au