



Australian Government

Department of Infrastructure,
Transport, Regional Development
and Local Government

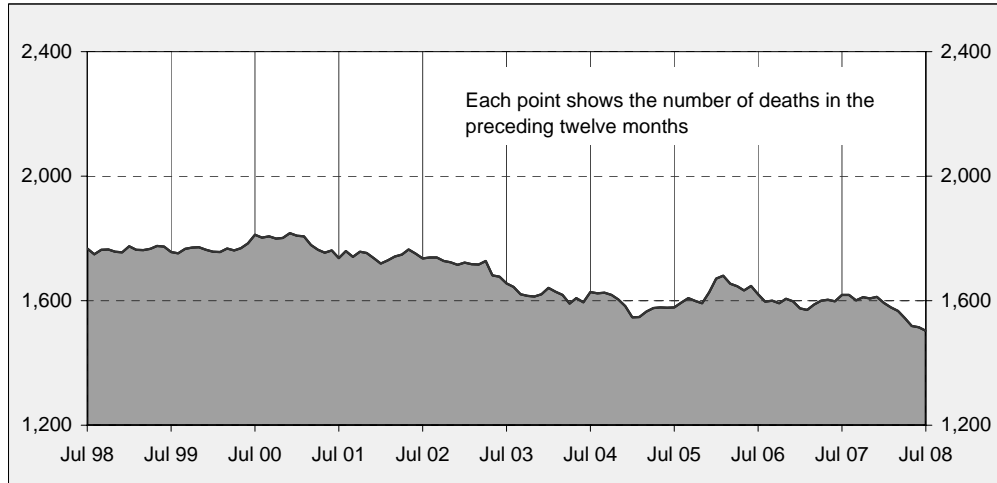
Road Deaths Australia

Monthly Bulletin

ISSN 1449-1168

July 2008

Australian road deaths for 12 months to date — last 10 years



Inquiries

For further information about data in this bulletin, contact:

Strategy and Analysis Section
Road Safety Branch
GPO Box 594,
Canberra, ACT 2601
Email: roadsafety@infrastructure.gov.au
Internet: www.infrastructure.gov.au

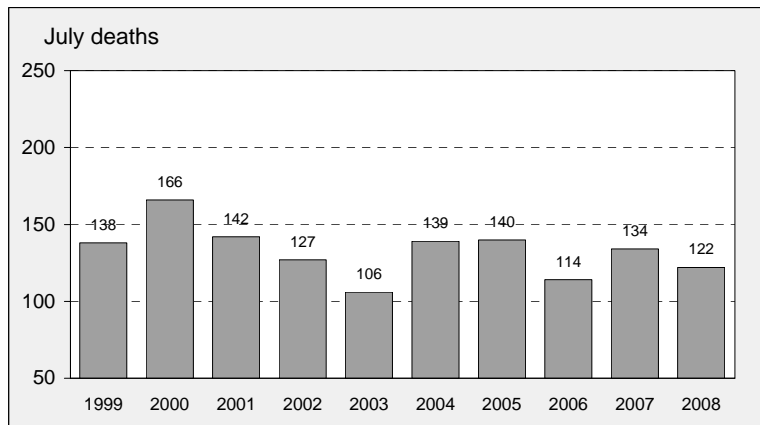
Data Sources

The data presented here are obtained from the following sources:

- Roads and Traffic Authority, NSW
- Vicroads
- Queensland Transport
- Department for Transport, Energy and Infrastructure, South Australia
- Western Australia Police
- Department of Infrastructure, Energy and Resources, Tasmania
- Department of Planning and Infrastructure, Northern Territory
- Territory and Municipal Services, ACT

- Road deaths from recent months are preliminary and subject to revision.

Australian road deaths for July — last 10 years



This month's key figures

There was a total of 122 road deaths in July 2008.
- this is a 9.0 per cent decrease from the July 2007 figure.

There have been 830 road deaths in 2008 to the end of July.
- this is a 11.6 per cent decrease from the same 7 month period in 2007.

NUMBER OF ROAD CRASH DEATHS IN EACH STATE / TERRITORY

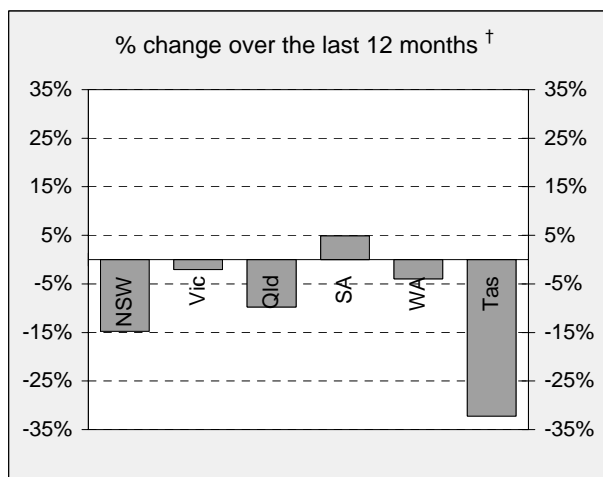
Road deaths by State/Territory

for current month, year to date, 12 months ended July, and five year trend

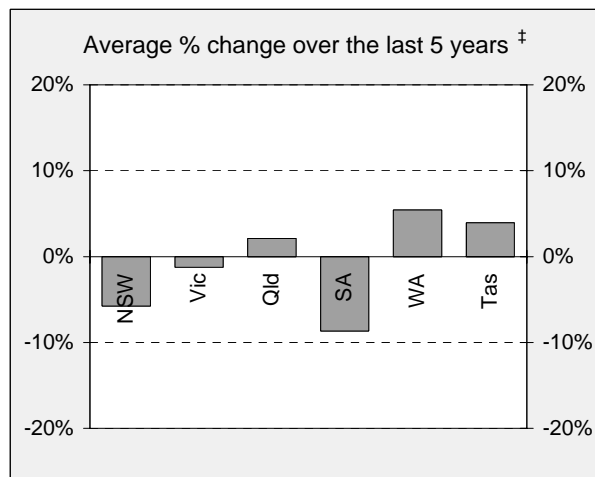
	NSW	Vic	Qld	SA	WA	Tas	NT	ACT	Australia
Current month									
Jul 2008	31	27	32	8	14	2	7	1	122
Jul 2007	41	28	29	7	18	4	6	1	134
% change	-24.4	-3.6	10.3	14.3	-22.2	-50.0	16.7	0.0	-9.0
Year to date									
Jan 2008 - Jul 2008	212	184	190	49	116	30	39	10	830
Jan 2007 - Jul 2007	270	185	216	65	134	35	25	9	939
% change	-21.5	-0.5	-12.0	-24.6	-13.4	-14.3	56.0	11.1	-11.6
12-months to date									
Aug 2007 - Jul 2008	386	333	334	108	217	40	70	15	1,503
Aug 2006 - Jul 2007	453	340	370	103	226	59	49	18	1,618
Difference	-67	-7	-36	5	-9	-19	21	-3	-115
% change	-14.8	-2.1	-9.7	4.9	-4.0	-32.2	42.9	-16.7	-7.1
Average annual % change over 5 years^a									
YE July 2003 to YE July 2008	-5.7	-1.2	2.1	-8.7	5.4	3.9	3.6	7.2	-1.4

^a This represents the average annual exponential change between the annual count of 5 years ago and the current annual count

Percentage change in deaths in each State



† Percentage change between the 12-month periods



‡ Average annual percentage change based on the exponential trend from the year ending June 2003 to the year ending June 2008.

NUMBER OF DEATHS IN EACH ROAD USER GROUP

Road deaths by road user group and gender

for 12 months ended July 2008, July 2007 and five year trend

	Drivers	Passengers	Pedestrians	Motor-cyclists ^a	Cyclists	All road users ^b
Males						
Aug 2007 - Jul 2008	582	166	123	216	24	1,112
Aug 2006 - Jul 2007	607	183	133	231	38	1,192
% change	-4.1	-9.3	-7.5	-6.5	-36.8	-6.7
Females						
Aug 2007 - Jul 2008	162	141	57	21	2	383
Aug 2006 - Jul 2007	181	144	81	15	4	425
% change	-10.5	-2.1	-29.6	40.0	-50.0	-9.9
Persons^c						
Aug 2007 - Jul 2008	747	312	180	237	26	1,503
Aug 2006 - Jul 2007	789	327	214	246	42	1,618
% change	-5.3	-4.6	-15.9	-3.7	-38.1	-7.1
Average annual % change over 5 years^d						
YE July 2003 to YE July 2008	-0.4	-5.4	-3.2	4.8	-3.5	-1.4

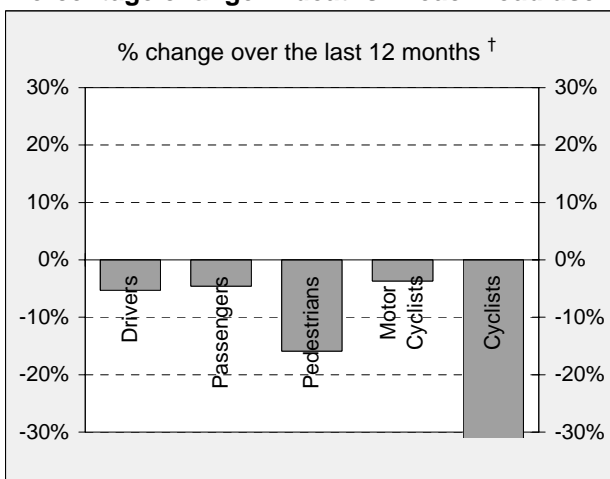
^a Includes pillion passengers

^b Includes road users not separately specified

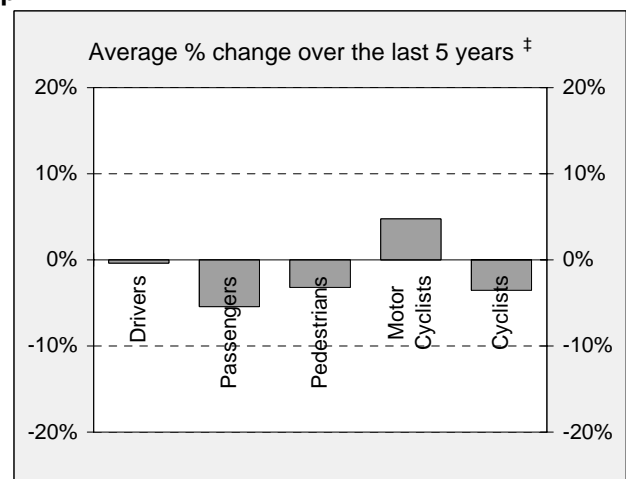
^c Includes road users with unstated gender

^d Average annual percentage change based on the exponential trend for the last five 12-month period.

Percentage change in deaths in each road user group



† Percentage change between the 12-month periods of Aug 2006 - Jul 2007 and Aug 2007 - Jul 2008

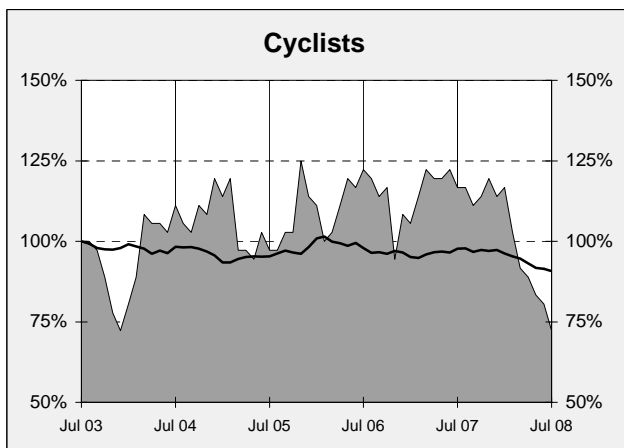
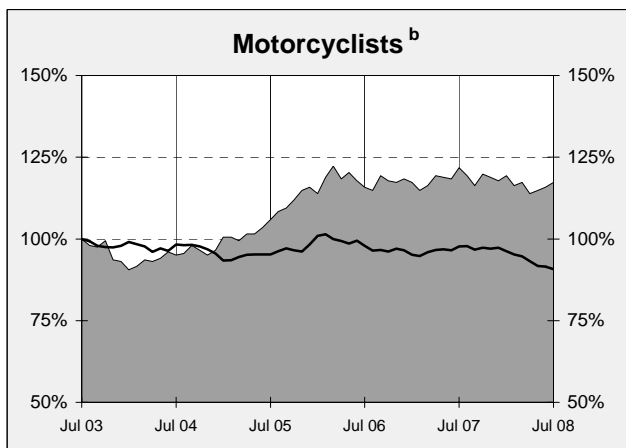
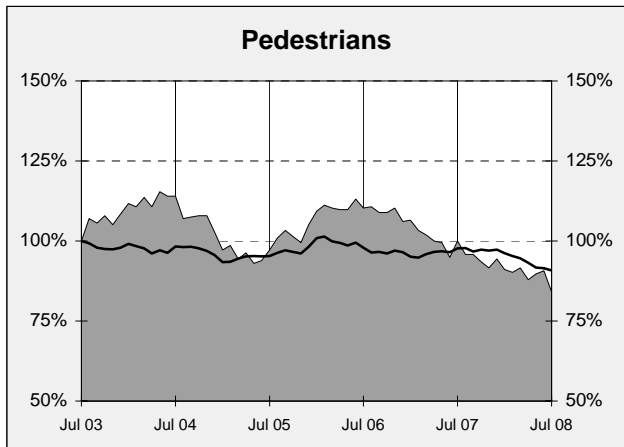
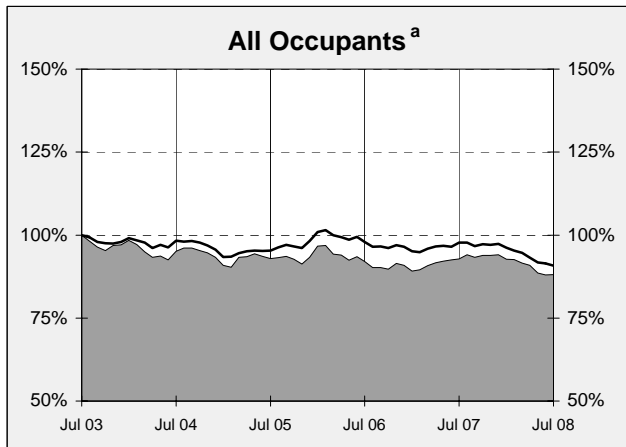
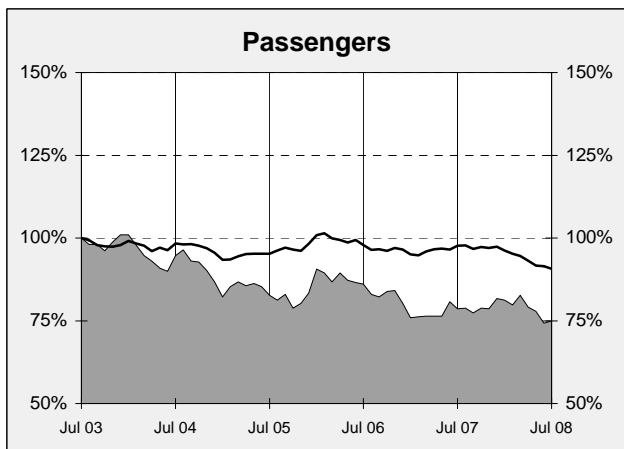
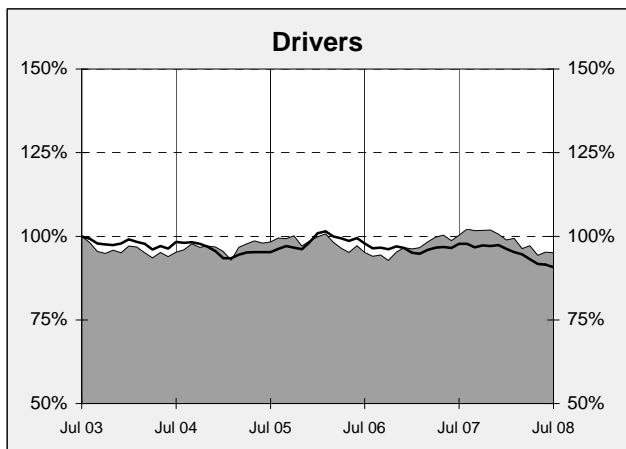
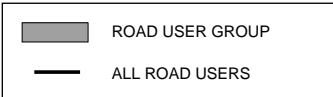


‡ Average annual percentage change based on the exponential trend over the period beginning with the 12 months to Jun 03 and ending with the 12 months to Jun 08.

DEATHS IN EACH ROAD USER GROUP - TRENDS

Annual deaths in each road user group - last 5 years

The number shown at each month represents the number of deaths in the preceding 12 months expressed as a percentage of the number of deaths in the 12 months to July 2003.



a Comprises drivers and passengers

b Includes pillion passengers

NUMBER OF FATAL ROAD CRASHES IN EACH STATE / TERRITORY

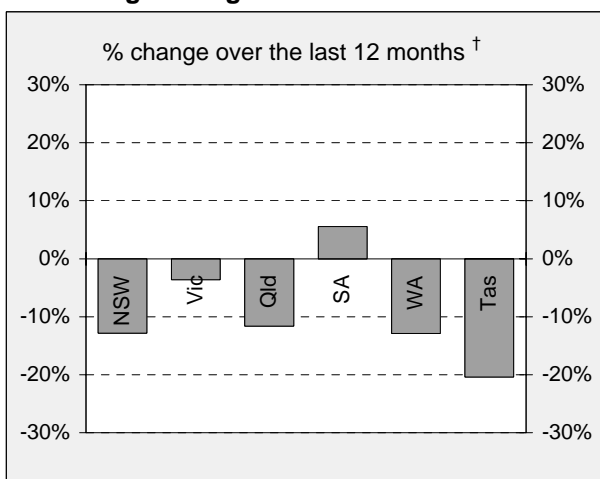
Fatal crashes by State/Territory

for current month, year to date, 12 months ended July, and five year trend.

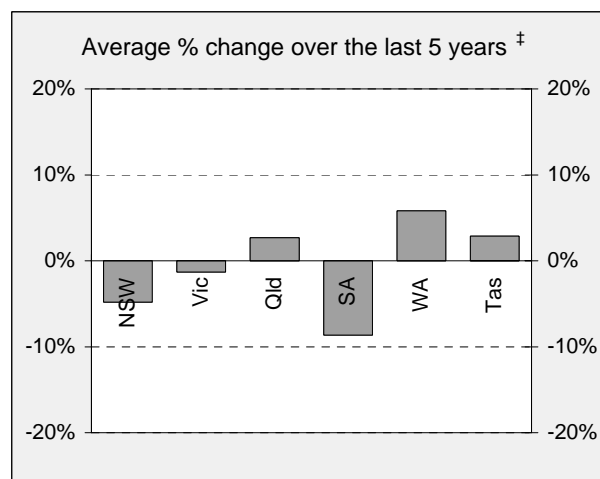
	NSW	Vic	Qld	SA	WA	Tas	NT	ACT	Australia
Current month									
Jul 2008	29	25	27	7	14	2	7	1	112
Jul 2007	39	25	29	7	17	4	5	1	127
% change	-25.6	0.0	-6.9	0.0	-17.6	-50.0	40.0	0.0	-11.8
Year to date									
Jan 2008 - Jul 2008	202	167	166	45	102	29	38	10	759
Jan 2007 - Jul 2007	250	162	200	57	127	29	23	9	857
% change	-19.2	3.1	-17.0	-21.1	-19.7	0.0	65.2	11.1	-11.4
12 months to date									
Aug 2007 - Jul 2008	366	295	304	95	189	39	61	15	1,364
Aug 2006 - Jul 2007	420	306	344	90	217	49	44	17	1,487
% change	-12.9	-3.6	-11.6	5.6	-12.9	-20.4	38.6	-11.8	-8.3
Average annual % change over 5 years^a									
YE July 2003 to YE July 2008	-4.8	-1.3	2.7	-8.6	5.8	2.9	6.2	11.4	-0.8

^a Average annual percentage change based on the exponential trend for the last five 12-month periods

Percentage change in fatal crashes in each State



† Percentage change between the 12-month periods



‡ Average annual percentage change based on the exponential trend from the year ending June 2003 to the year ending June 2008.

FATAL CRASHES INVOLVING TRUCKS OR BUSES

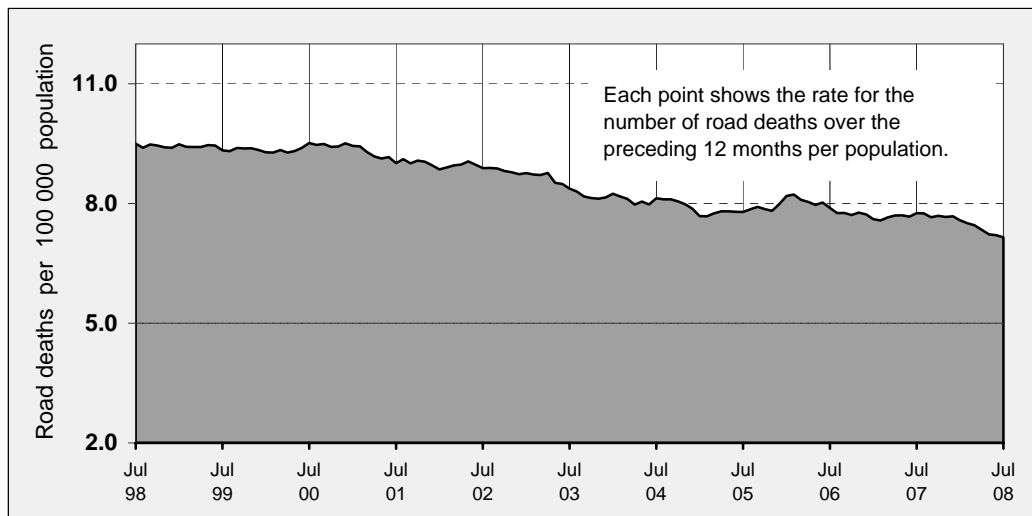
Analysis of fatal crashes involving heavy vehicles is now published in a separate quarterly bulletin

ROAD DEATH RATES

Road deaths per 100 000 population

	NSW	Vic	Qld	SA	WA	Tas	NT	ACT	Australia
12-months to date									
Aug 2007 - Jul 2008	5.6	6.3	7.9	6.8	10.2	8.1	32.2	4.4	7.1
Aug 2006 - Jul 2007	6.6	6.6	8.9	6.5	10.8	12.0	23.0	5.3	7.7
Calendar year									
2007	6.4	6.4	8.6	7.8	11.2	9.1	26.1	4.1	7.7
2002	8.5	8.2	8.7	10.1	9.3	7.8	27.6	3.1	8.7

Australian road deaths per year per 100 000 population - moving 12-monthly data



CHARACTERISTICS OF FATAL CRASHES

Proportion (per cent) of fatal crashes by speed limit, crash type, time of day, and time of week. Two years ended July 2008 and two years ended July 2003

	Speed limit (km/h) ^a			Time of Day	
	Up to 60	65-95	100+	Day	Night ^b
Aug 2006 - Jul 2008	31.5%	22.1%	46.4%	56.4%	43.6%
Aug 2001 - Jul 2003	31.2%	22.4%	46.5%	56.2%	43.8%
	Crash Type			Time of week	
	Pedestrian crash	Other single veh. Crash	Other multiple veh. crash	Week day	Week-end ^c
Aug 2006 - Jul 2008	13.8%	47.8%	38.4%	58.4%	41.6%
Aug 2001 - Jul 2003	16.4%	43.6%	40.0%	59.8%	40.2%

^a Excludes ACT

^b 6:00 pm to 5:59 am

^c 6:00 pm Friday to 5:59 am Monday

ROAD DEATHS BY AGE, GENDER AND ROAD USER GROUP

Road deaths by age and gender

for 12 months ended July 2008 and July 2007

	0-16 years	17-20 years	21-25 years	26-39 years	40-59 years	60+ years	All deaths ^a
Males							
Aug 2007 - Jul 2008	53	150	158	288	277	180	1,112
Aug 2006 - Jul 2007	66	154	152	340	280	198	1,192
% change	-19.7	-2.6	3.9	-15.3	-1.1	-9.1	-6.7
Females							
Aug 2007 - Jul 2008	32	39	34	66	106	103	383
Aug 2006 - Jul 2007	49	49	46	72	96	111	425
% change	-34.7	-20.4	-26.1	-8.3	10.4	-7.2	-9.9
Persons^b							
Aug 2007 - Jul 2008	90	189	192	354	383	283	1,503
Aug 2006 - Jul 2007	116	203	198	412	376	309	1,618
% change	-22.4	-6.9	-3.0	-14.1	1.9	-8.4	-7.1

a Includes road users with unstated age

b Includes road users with unstated gender

Road deaths by age for each main road user group

	0-16 years	17-20 years	21-25 years	26-39 years	40-59 years	60+ years	All deaths ^a
Occupants^b							
Aug 2007 - Jul 2008	68	152	137	227	261	205	1,059
Aug 2006 - Jul 2007	77	168	140	273	236	219	1,116
% change	-11.7	-9.5	-2.1	-16.8	10.6	-6.4	-5.1
Motorcyclists^c							
Aug 2007 - Jul 2008	3	24	36	85	73	15	237
Aug 2006 - Jul 2007	9	16	42	92	73	14	246
% change	-66.7	50.0	-14.3	-7.6	0.0	7.1	-3.7
Pedestrians							
Aug 2007 - Jul 2008	15	11	18	38	37	59	180
Aug 2006 - Jul 2007	23	17	13	37	51	72	214
% change	-34.8	-35.3	38.5	2.7	-27.5	-18.1	-15.9

a Includes road users with unstated age

b Comprises drivers and passengers

c Includes pillion passengers