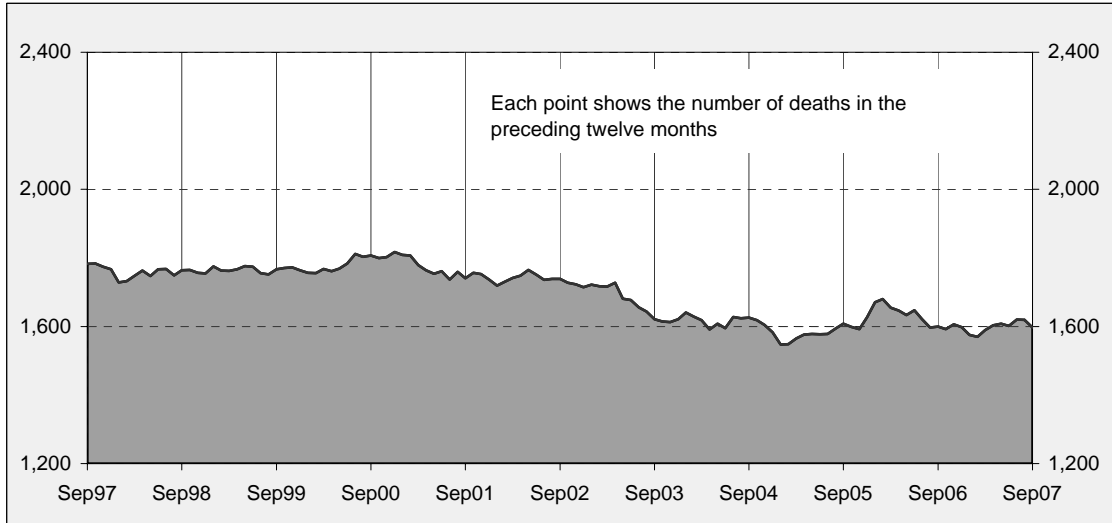




Australian road deaths for 12 months to date - last 10 years



Inquiries

For further information about data in this bulletin, contact:

Road Safety Research and Statistics
Australian Transport Safety Bureau
PO Box 967,
Civic Square, ACT 2608
Email: research@atsb.gov.au
Internet: www.atsb.gov.au

Data Sources

The data presented here are obtained from the following sources:

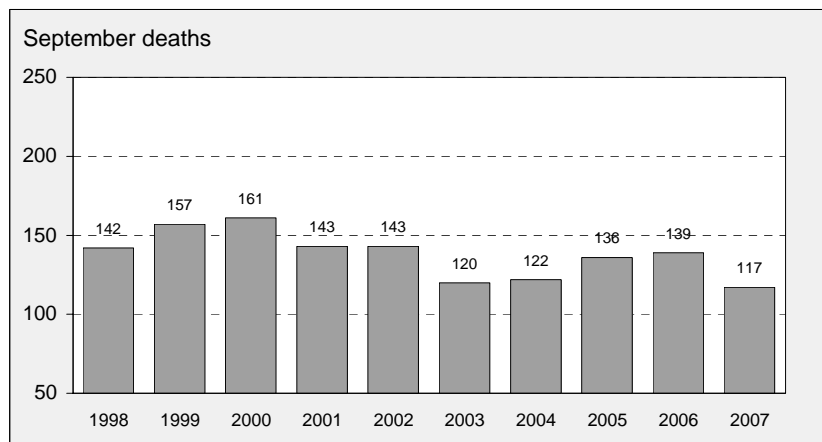
- Roads and Traffic Authority, NSW
- Vicroads
- Queensland Transport
- Department for Transport, Energy and Infrastructure, South Australia
- Western Australia Police
- Department of Infrastructure, Energy and Resources, Tasmania
- Department of Planning and Infrastructure, Northern Territory
- Territory and Municipal Services, ACT

Note

Road death statistics for recent months are preliminary and subject to revision. They include any deaths occurring within 30 days of a crash stemming from injuries received in the crash.

The Australian Transport Safety Bureau is an operationally independent body within the Australian Government Department of Transport and Regional Services.

Australian road deaths for September - last 10 years



This month's key figures

There were a total of 117 road deaths in September 2007.
- this is a 15.8% decrease from the September 2006 figure.

There have been 1,184 road deaths in 2007 to the end of September.
- this is a 0.1% decrease from the same 9 month period in 2006.

NUMBER OF ROAD CRASH DEATHS IN EACH STATE / TERRITORY

Road deaths by State/Territory for month, year to date, and twelve months - period ended September 2007 and period ended September 2006

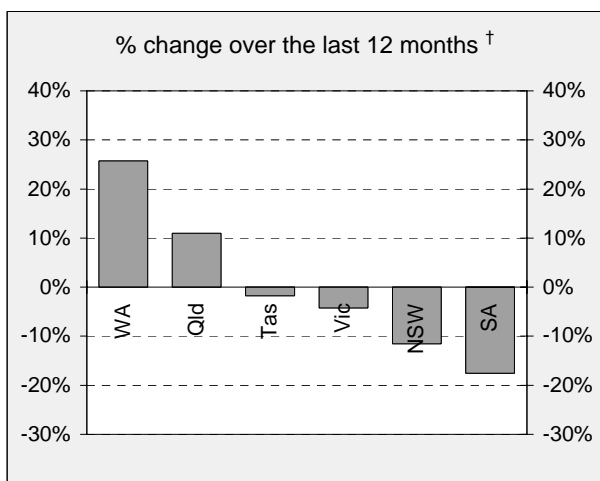
	NSW	Vic	Qld	SA	WA	Tas	NT	ACT	Australia
Current month									
Sep 2007	29	24	30	10	19	1	4	0	117
Sep 2006	33	43	32	8	16	5	1	1	139
% change	-12.1	-44.2	-6.3	25.0	18.8	-80.0	300.0	-100.0	-15.8
Year to date									
Jan 2007 - Sep 2007	329	229	281	86	173	40	35	11	1,184
Jan 2006 - Sep 2006	380	247	241	95	146	39	30	7	1,185
% change	-13.4	-7.3	16.6	-9.5	18.5	2.6	16.7	57.1	-0.1
12-months to date									
Oct 2006 - Sep 2007	445	319	375	108	230	56	47	17	1,597
Oct 2005 - Sep 2006	503	333	338	131	183	57	43	12	1,600
Difference	-58	-14	37	-23	47	-1	4	5	-3
% change	-11.5	-4.2	10.9	-17.6	25.7	-1.8	9.3	41.7	-0.2

Average annual % change over 5 years^a

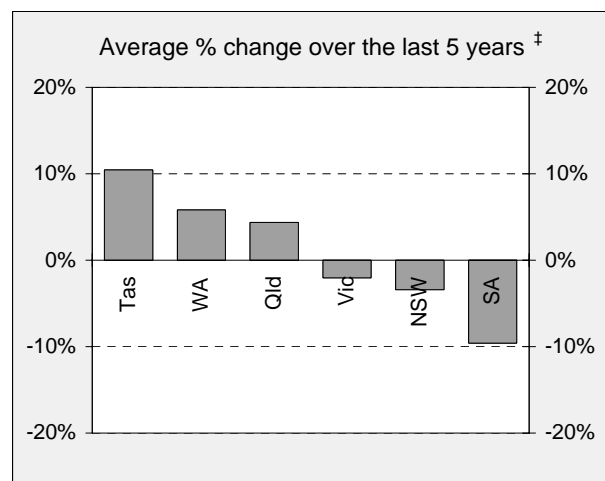
Oct 2002 to Sep 2007	-3.4	-2.0	4.4	-9.6	5.8	10.5	-3.3	14.6	-0.5
----------------------	------	------	-----	------	-----	------	------	------	------

^a Average annual percentage change based on the exponential trend for the last five 12 -month periods

Percentage change in deaths in each State



[†] Percentage change between the 12-month periods of Oct 2005 - Sep 2006 and Oct 2006 - Sep 2007



[‡] Average annual percentage change based on the exponential trend for the last five 12-month periods

NUMBER OF DEATHS IN EACH ROAD USER GROUP

Road deaths by road user group and gender for twelve months ended September 2007 and twelve months ended September 2006

	Drivers	Passengers	Pedestrians	Motor-cyclists ^a	Cyclists	All road users ^b
Males						
Oct 2006 - Sep 2007	626	166	118	217	37	1,164
Oct 2005 - Sep 2006	571	196	155	228	34	1,185
% change	9.6	-15.3	-23.9	-4.8	8.8	-1.8
Females						
Oct 2006 - Sep 2007	178	149	82	18	4	431
Oct 2005 - Sep 2006	170	144	78	12	7	411
% change	4.7	3.5	5.1	50.0	-42.9	4.9
Persons^c						
Oct 2006 - Sep 2007	805	315	200	236	41	1,597
Oct 2005 - Sep 2006	742	343	233	240	41	1,600
% change	8.5	-8.2	-14.2	-1.7	0.0	-0.2
Average annual % change over 5 years^d						
Oct 2002 to Sep 2007	1.1	-6.2	-2.3	5.7	4.3	-0.5

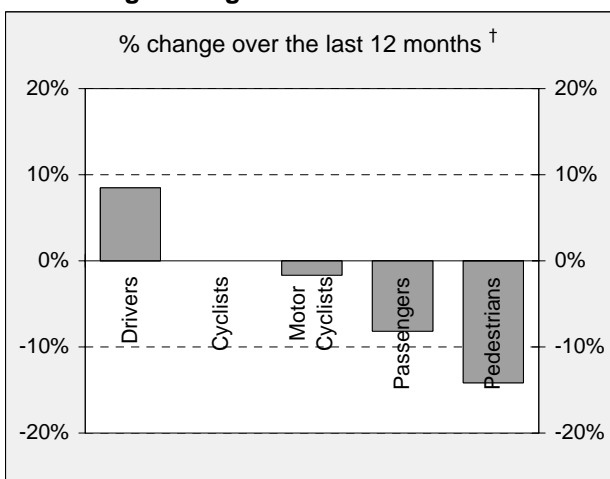
a Includes pillion passengers

b Includes road users not separately specified

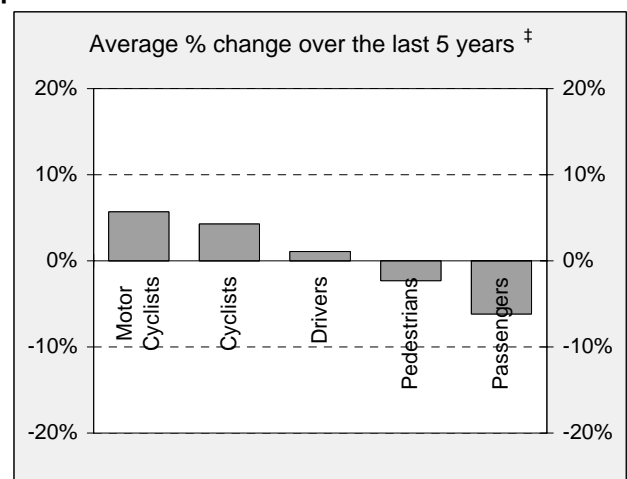
c Includes road users with unstated gender

d Average annual percentage change based on the exponential trend for the last five 12-month period.

Percentage change in deaths in each road user group



† Percentage change between the 12-month periods of Oct 2005 - Sep 2006 and Oct 2006 - Sep 2007

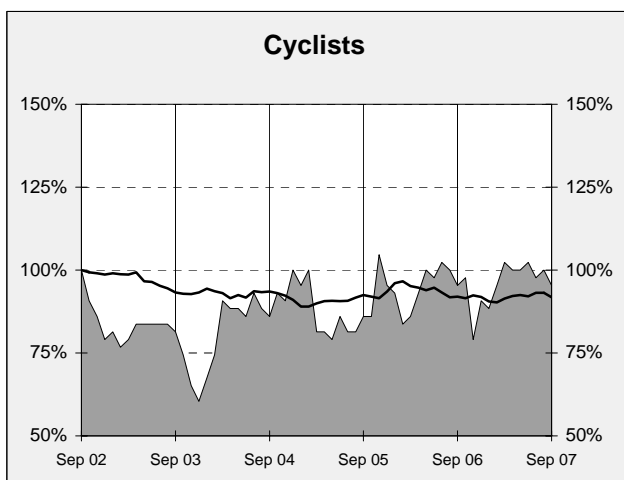
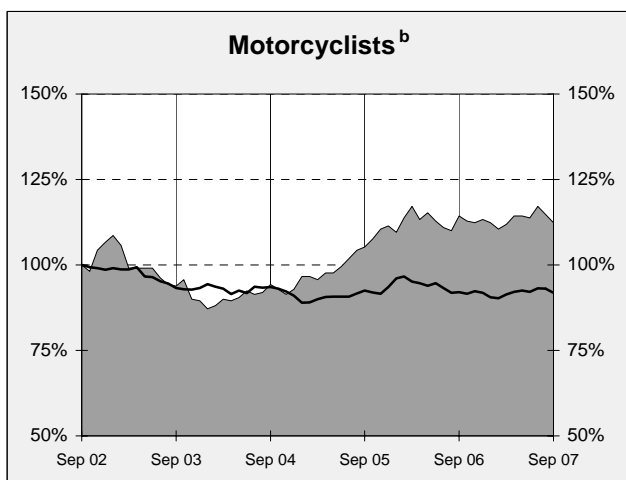
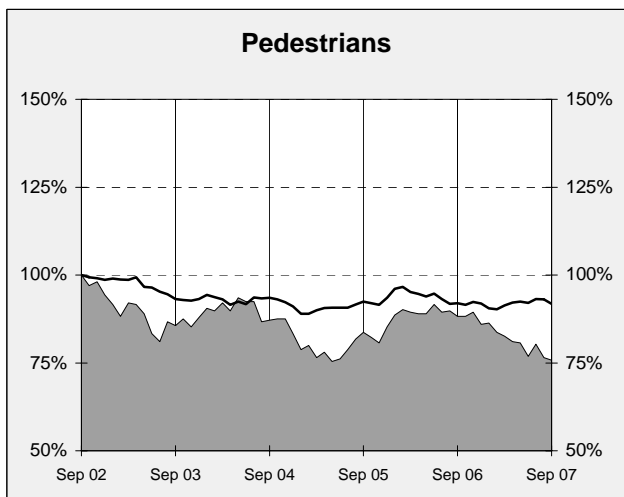
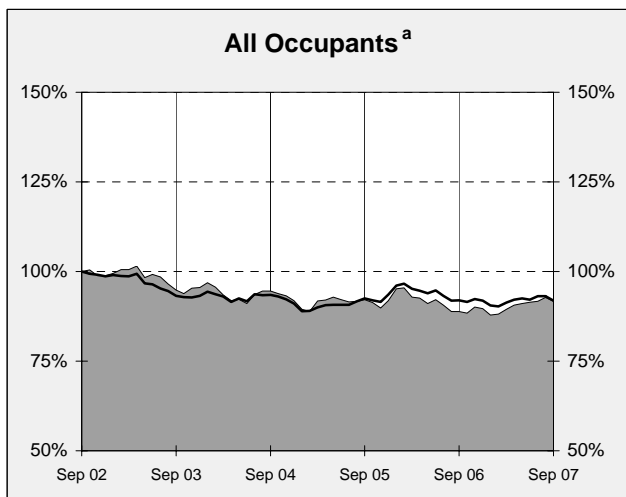
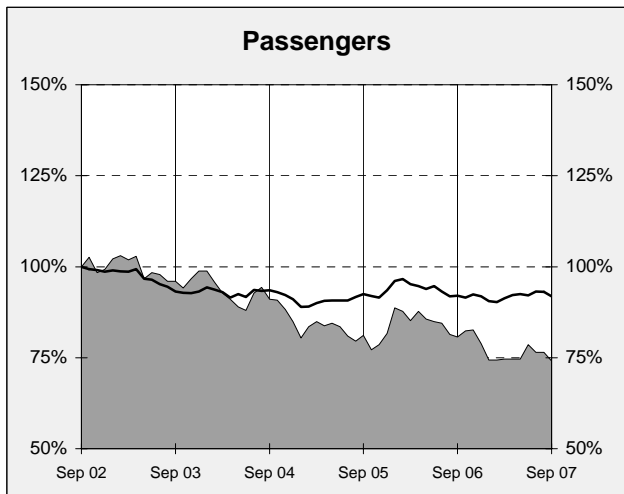
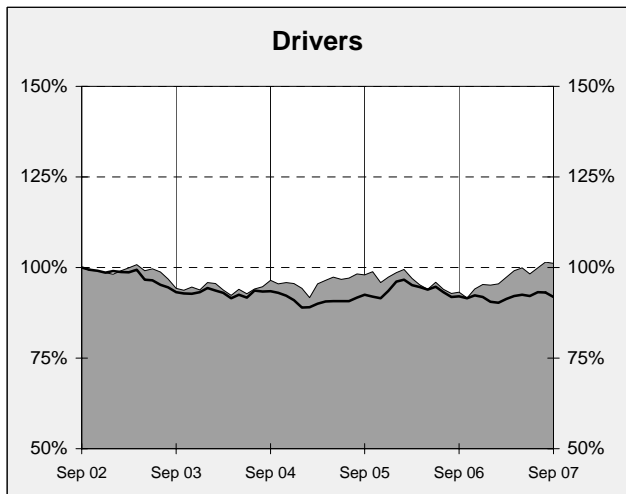
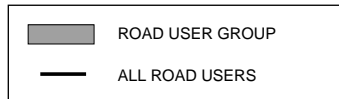


‡ Average annual percentage change based on the exponential trend for the last five 12-month periods

DEATHS IN EACH ROAD USER GROUP - TRENDS

Annual deaths in each road user group - last 5 years

The number shown at each month represents the number of deaths in the preceding 12 months expressed as a percentage of the number of deaths in the 12 months to September 2002.



a Comprises drivers and passengers

b Includes pillion passengers

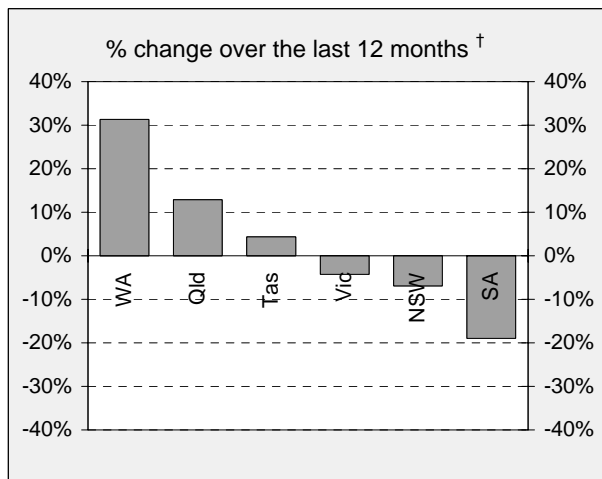
NUMBER OF FATAL ROAD CRASHES IN EACH STATE / TERRITORY

Fatal crashes by State/Territory for month, year to date and twelve month-period ended September 2007 and period ended September 2006

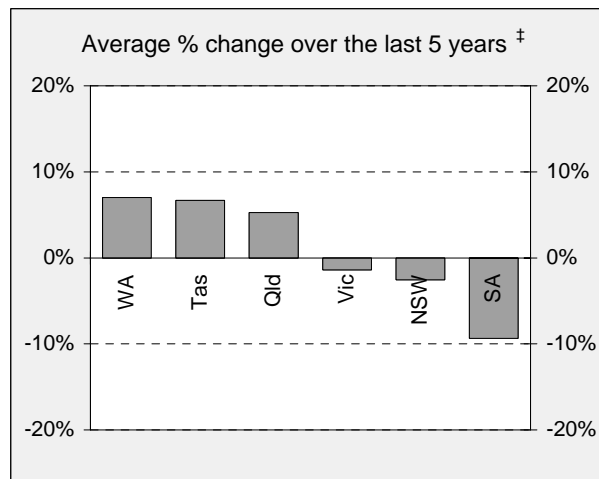
	NSW	Vic	Qld	SA	WA	Tas	NT	ACT	Australia
Current month									
Sep 2007	29	23	29	10	16	1	4	0	112
Sep 2006	31	36	28	7	15	3	1	1	122
% change	-6.5	-36.1	3.6	42.9	6.7	-66.7	300.0	-100.0	-8.2
Year to date									
Jan 2007 - Sep 2007	309	203	262	76	158	34	31	11	1084
Jan 2006 - Sep 2006	341	222	224	86	128	29	28	7	1065
% change	-9.4	-8.6	17.0	-11.6	23.4	17.2	10.7	57.1	1.8
12 months to date									
Oct 2006 - Sep 2007	417	290	351	94	214	48	42	16	1,472
Oct 2005 - Sep 2006	448	303	311	116	163	46	40	12	1,439
% change	-6.9	-4.3	12.9	-19.0	31.3	4.3	5.0	33.3	2.3
Average annual % change over 5 years^a									
Oct 2002 to Sep 2007	-2.6	-1.4	5.3	-9.4	7.0	6.7	-1.3	15.9	0.3

a Average annual percentage change based on the exponential trend for the last five 12-month periods

Percentage change in fatal crashes in each State



† Percentage change between the 12-month periods of Oct 2005 - Sep 2006 and Oct 2006 - Sep 2007



‡ Average annual percentage change based on the exponential trend for the last five 12-month periods

FATAL CRASHES INVOLVING TRUCKS OR BUSES

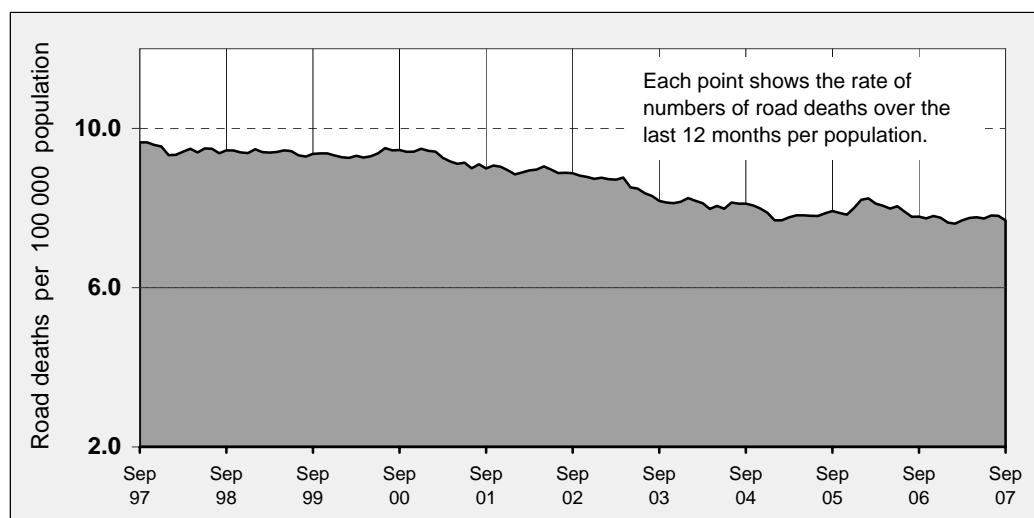
Analysis of fatal crashes involving heavy vehicles is now published in a separate quarterly bulletin on the ATSB website at www.atsb.gov.au.

ROAD DEATH RATES

Road deaths per 100 000 population

	NSW	Vic	Qld	SA	WA	Tas	NT	ACT	Australia
12-months to date									
Oct 2006 - Sep 2007	6.5	6.2	9.1	6.9	11.1	11.4	22.5	5.1	7.7
Oct 2005 - Sep 2006	7.4	6.6	8.4	8.4	9.0	11.7	20.9	3.7	7.8
Calendar year									
2006	7.3	6.6	8.3	7.5	9.9	11.2	20.3	4.0	7.8
2001	8.0	9.2	8.9	10.1	8.7	12.9	25.3	5.0	8.9

Australian road deaths per year per 100 000 population - moving 12-monthly data



CHARACTERISTICS OF FATAL CRASHES

Proportion (per cent) of fatal crashes by speed limit, crash type, time of day, and time of week. Two years ended September 2007 and two years ended September 2002

	Speed limit (km/h) ^a			Time of Day	
	Up to 60	65-95	100+	Day	Night ^b
Oct 2005 - Sep 2007	33.1%	21.4%	45.5%	56.1%	43.9%
Oct 2000 - Sep 2002	32.9%	20.8%	46.3%	56.0%	44.0%
	Crash Type			Time of week	
	Pedestrian crash	Other single veh. Crash	Other multiple veh. crash	Week day	Week-end ^c
Oct 2005 - Sep 2007	14.6%	46.5%	38.9%	58.2%	41.8%
Oct 2000 - Sep 2002	17.2%	43.2%	39.6%	59.9%	40.1%

^a Excludes ACT

^b 6:00 pm to 5:59 am

^c 6:00 pm Friday to 5:59 am Monday

ROAD DEATHS BY AGE, GENDER AND ROAD USER GROUP

Road deaths by age and gender

	0-16 years	17-20 years	21-25 years	26-39 years	40-59 years	60+ years	All deaths ^a
Males							
Oct 2006 - Sep 2007	59	145	146	326	284	197	1,164
Oct 2005 - Sep 2006	77	177	173	329	253	174	1,185
% change	-23.4	-18.1	-15.6	-0.9	12.3	13.2	-1.8
Females							
Oct 2006 - Sep 2007	46	45	43	75	99	115	431
Oct 2005 - Sep 2006	53	44	45	73	102	94	411
% change	-13.2	2.3	-4.4	2.7	-2.9	22.3	4.9
Persons^b							
Oct 2006 - Sep 2007	105	190	189	401	383	312	1,597
Oct 2005 - Sep 2006	134	221	218	402	355	268	1,600
% change	-21.6	-14.0	-13.3	-0.2	7.9	16.4	-0.2

a Includes road users with unstated age

b Includes road users with unstated gender

Road deaths by age for each main road user group

	0-16 years	17-20 years	21-25 years	26-39 years	40-59 years	60+ years	All deaths ^a
Occupants^b							
Oct 2006 - Sep 2007	67	157	132	273	250	231	1,120
Oct 2005 - Sep 2006	88	177	156	259	237	168	1,085
% change	-23.9	-11.3	-15.4	5.4	5.5	37.5	3.2
Motorcyclists^c							
Oct 2006 - Sep 2007	10	18	41	84	66	13	236
Oct 2005 - Sep 2006	4	27	45	89	65	10	240
% change	150.0	-33.3	-8.9	-5.6	1.5	30.0	-1.7
Pedestrians							
Oct 2006 - Sep 2007	21	13	15	34	50	64	200
Oct 2005 - Sep 2006	35	14	15	46	42	79	233
% change	-40.0	-7.1	0.0	-26.1	19.0	-19.0	-14.2

a Includes road users with unstated age

b Comprises drivers and passengers

c Includes pillion passengers

TIME SERIES - QUARTERLY SUPPLEMENT

Road deaths by road user group, 1992 to 2006

	<i>Drivers</i>	<i>Passengers</i>	<i>Pedestrians</i>	<i>Motor-cyclists^a</i>	<i>Cyclists</i>	<i>All road users^b</i>
1992	815	570	350	197	41	1,974
1993	859	513	331	203	45	1,953
1994	809	501	367	190	59	1,928
1995	874	491	398	204	48	2,017
1996	869	499	351	193	57	1,970
1997	776	431	328	177	52	1,767
1998	741	468	318	181	44	1,755
1999	820	428	299	176	40	1,764
2000	852	450	287	191	31	1,817
2001	776	407	290	216	46	1,737
2002	785	422	249	224	34	1,715
2003	747	420	232	188	26	1,621
2004	761	361	220	195	43	1,583
2005	775	347	225	234	41	1,627
2006	759	335	227	238	39	1,598

a Includes pillion passengers

b Includes road users not separately specified

Road deaths by State/Territory, 1992 to 2006

	<i>NSW</i>	<i>Vic</i>	<i>Qld</i>	<i>SA</i>	<i>WA</i>	<i>Tas</i>	<i>NT</i>	<i>ACT</i>	<i>Australia</i>
1992	649	396	416	165	200	74	54	20	1,974
1993	581	435	396	218	209	58	44	12	1,953
1994	646	377	418	159	211	59	41	17	1,928
1995	620	418	456	181	209	57	61	15	2,017
1996	581	417	385	181	247	64	72	23	1,970
1997	576	377	360	148	197	32	60	17	1,767
1998	556	390	279	168	223	48	69	22	1,755
1999	577	383	314	151	218	53	49	19	1,764
2000	603	407	317	166	212	43	51	18	1,817
2001	524	444	324	153	165	61	50	16	1,737
2002	561	397	322	154	179	37	55	10	1,715
2003	539	330	310	157	180	41	53	11	1,621
2004	510	343	311	139	178	58	35	9	1,583
2005	508	346	330	148	163	51	55	26	1,627
2006	496	337	335	117	203	55	42	13	1,598

DEATH RATES - QUARTERLY REPORT

Road death rates by State/Territory

	<i>NSW</i>	<i>Vic</i>	<i>Qld</i>	<i>SA</i>	<i>WA</i>	<i>Tas</i>	<i>NT</i>	<i>ACT</i>	<i>Australia</i>
<i>Per capita^a</i>									
2006	7.26	6.62	8.26	7.53	9.90	11.25	20.32	3.95	7.76
2001	7.97	9.24	8.93	10.12	8.68	12.93	25.28	5.01	8.95
<i>Per vehicle^b</i>									
2006	1.16	0.90	1.16	1.03	1.27	1.47	3.68	0.58	1.11
2001	1.40	1.34	1.38	1.46	1.20	1.84	4.86	0.79	1.39

a Annual deaths per 100,000 population: 2006 at June 30 (preliminary data); 2001 at June 30 (revised data) taken from ABS catalogue 3201.0

b Annual deaths per 10,000 registered motor vehicles: 2006 at Mar 31; 2001 at Oct 31 taken from ABS catalogue 9309.0.

DEATHS BY AGE AND ROAD USER GROUP - QUARTERLY SUPPLEMENT

Road deaths by road user group and age for twelve months ended
September 2007 and twelve months ended September 2006

	0-16 years	17-20 years	21-25 years	26-39 years	40-59 years	60+ years	All deaths ^d
Drivers							
Oct 2006 - Sep 2007	6	104	97	216	209	168	805
Oct 2005 - Sep 2006	8	102	118	205	180	129	742
% change	-25.0	2.0	-17.8	5.4	16.1	30.2	8.5
Ave annual % change ^a Sep 2002 to Sep 2007	-7.8	-1.6	-0.8	-0.6	1.8	1.1	0.2
Passengers							
Oct 2006 - Sep 2007	61	53	35	57	41	63	315
Oct 2005 - Sep 2006	80	75	38	54	57	39	343
% change	-23.8	-29.3	-7.9	5.6	-28.1	61.5	-8.2
Ave annual % change ^a Sep 2002 to Sep 2007	-4.3	-7.9	-5.7	-6.1	-8.2	-4.9	-5.8
Pedestrians							
Oct 2006 - Sep 2007	21	13	15	34	50	64	200
Oct 2005 - Sep 2006	35	14	15	46	42	79	233
% change	-40.0	-7.1	0.0	-26.1	19.0	-19.0	-14.2
Ave annual % change ^a Sep 2002 to Sep 2007	-6.9	-5.2	-5.6	-6.7	-3.9	-6.2	-5.4
Motorcyclists^b							
Oct 2006 - Sep 2007	10	18	41	84	66	13	236
Oct 2005 - Sep 2006	4	27	45	89	65	10	240
% change	150.0	-33.3	-8.9	-5.6	1.5	30.0	-1.7
Ave annual % change ^a Sep 2002 to Sep 2007	10.8	5.2	5.1	-2.8	5.3	5.4	2.4
Cyclists							
Oct 2006 - Sep 2007	7	2	1	10	17	4	41
Oct 2005 - Sep 2006	7	3	2	7	11	11	41
All road users^c							
Oct 2006 - Sep 2007	105	190	189	401	383	312	1,597
Oct 2005 - Sep 2006	134	221	218	402	355	268	1,600
% change	-21.6	-14.0	-13.3	-0.2	7.9	16.4	-0.2
Ave annual % change ^a Sep 2002 to Sep 2007	-4.6	-3.3	-1.4	-2.5	0.5	-2.2	-1.7

^a This represents the average annual exponential change between the annual count of 5-years ago and the current annual count

^b Includes pillion passengers

^c Includes road users not separately classified

^d Includes deaths with unstated age

DEATHS BY STATE / TERRITORY AND ROAD USER - QUARTERLY SUPPLEMENT

Road deaths by road user group and State/Territory for twelve months ended September 2007 and twelve months ended September 2006

	NSW	Vic	Qld	SA	WA	Tas	NT	ACT	Australia
Drivers									
Oct 2006 - Sep 2007	222	173	182	51	121	24	23	9	805
Oct 2005 - Sep 2006	239	142	163	68	79	30	15	6	742
% change	-7.1	21.8	11.7	-25.0	53.2	-20.0	53.3	-	8.5
<i>Ave annual % change^a</i>									
Sep 2002 to Sep 2007	-4.1	-2.9	6.2	-6.1	9.2	4.8	12.1	-	0.2
Passengers									
Oct 2006 - Sep 2007	82	58	66	27	53	16	11	2	315
Oct 2005 - Sep 2006	107	68	70	26	45	17	10	0	343
% change	-23.4	-14.7	-5.7	3.8	17.8	-5.9	10.0	-	-8.2
<i>Ave annual % change^a</i>									
Sep 2002 to Sep 2007	-8.8	-9.0	-5.8	-5.1	2.4	26.2	-12.9	-	-5.8
Pedestrians									
Oct 2006 - Sep 2007	67	40	42	13	20	6	10	2	200
Oct 2005 - Sep 2006	78	63	44	10	23	1	12	2	233
% change	-14.1	-36.5	-4.5	30.0	-13.0	500.0	-16.7	-	-14.2
<i>Ave annual % change^a</i>									
Sep 2002 to Sep 2007	-7.5	-10.1	2.0	-5.2	-1.9	3.7	-6.5	-	-5.4
Motorcyclists^b									
Oct 2006 - Sep 2007	63	41	76	10	32	8	3	3	236
Oct 2005 - Sep 2006	68	47	52	23	33	7	6	4	240
% change	-7.4	-12.8	46.2	-56.5	-3.0	14.3	-50.0	-	-1.7
<i>Ave annual % change^a</i>									
Sep 2002 to Sep 2007	3.1	-7.0	10.6	-9.0	7.8	-4.4	0.0	-	2.4
Cyclists									
Oct 2006 - Sep 2007	11	7	9	7	4	2	0	1	41
Oct 2005 - Sep 2006	11	13	9	3	3	2	0	0	41
All road users^c									
Oct 2006 - Sep 2007	445	319	375	108	230	56	47	17	1,597
Oct 2005 - Sep 2006	503	333	338	131	183	57	43	12	1,600
% change	-11.5	-4.2	10.9	-17.6	25.7	-1.8	9.3	41.7	-0.2
<i>Ave annual % change^a</i>									
Sep 2002 to Sep 2007	-4.9	-5.7	3.2	-5.2	5.5	7.5	-2.0	7.2	-1.7

^a This represents the average annual exponential change between the annual count of 5-years ago and the current annual count

^b Includes pillion passengers

^c Includes road users not separately classified