

UNCLASSIFIED



Australian Government  
Department of Infrastructure and Regional Development

This is a Meeting  
Brief for  
Information

<b>FOR: The Hon Darren Chester MP</b> cc: Mr Mike Mrdak, Secretary Ms Pip Spence, A/g Deputy Secretary	<b>PDR ID:</b> MB17-000487	<b>Action required by:</b> 5 September 2017  <b>Reason:</b> Meeting on 6 September 2017
--	-------------------------------	---

**SUBJECT:** The proposed Inland Rail route through Gilgandra Shire

**MEETING WITH:** The Hon Mark Coulton MP and Cr Ash Walker

**TIME/DATE:** 10:45 – 11:15 am, Wednesday 6 September 2017

**VENUE:** M1.26 Parliament House, Canberra

### Purpose of Meeting

1. To discuss the proposed Inland Rail route through the Gilgandra Shire.

### Main Issues and Expected Outcomes

1. The Inland Rail route through the Gilgandra Shire is still to be determined.
2. The Narromine to Narrabri project (N2N), which includes the railway corridor that passes through the shire, was subject to a multi-criteria analysis (MCA) conducted in May 2017. The base case map on the N2N section is at **Attachment A**.
2. Two alignment options between Burroway and Curban (the portion that passes through Gilgandra Shire) were analysed. These both lie to the west of Gilgandra – the base case travelling near Kickabil (orange line on the Burroway to Curban study map at **Attachment B**) and an alternative option east of Gilmours Road (pink line on the study map).
3. Early information from the Australian Rail Track Corporation (ARTC) indicates the alternative alignment option east of Gilmours Road (pink line) may be preferred on technical, constructability and environmental grounds. However, this information cannot be confirmed until ARTC submits its report recommending the preferred alignment corridor.
4. The ARTC has confirmed that Inland Rail will connect with the Coonamble-Dubbo freight railway at Curban. The Coonamble-Dubbo freight line travels through Armatree (Councillor Walker's home town) and Gilgandra. The Curban connection will enable traffic from Gilgandra to access Inland Rail.
5. While there is strong local support for Inland Rail to follow a portion of the Coonamble-Dubbo freight line north of Gilgandra through Armatree as far as Box Ridge Road, Gulargambone, the base case alignment scored higher than this alternative option during the MCA process. The Curban to Mt Tenandra study map is at **Attachment C**.
6. The base case option between Curban and Mt Tenandra (orange line on the study map) demonstrated a better service offering, constructability, fewer environmental and heritage impacts and lower technical difficulty.

Cleared by: Scott Mashford, General Manager Date: 31 August 2017 Phone: 6274 7624 Branch: Communications and Stakeholder Engagement Division: Inland Rail Unit	DARREN CHESTER  ..... / ..... / .....
---	---

UNCLASSIFIED

7. The detailed configuration of the connection to the Coonamble-Dubbo freight line at Curban will be determined during the detailed design phase of the Narromine to Narrabri project and in consultation with the Department of Transport for New South Wales.
8. ARTC's report on the N2N project will be considered by the Inland Rail Sponsors' Group before the Department submits the report and recommendation to you for approval in September 2017.

## Consultation

ARTC.

## Attached Biographical Details



**The Hon Mark Coulton MP** – Mr Coulton has been the Member for Parkes since 2007, before which he was the Mayor of the Gwydir Shire Council from 2004 to 2007. Mr Coulton is the Deputy Speaker of the House of Representatives. He is supportive of Inland Rail.



### **Cr Ash Walker**

Cr Walker is the Deputy Mayor of the Gilgandra Shire Council. He was first elected to the Council in 2012. He is also a publican at Armatree, which lies on the Coonamble-Dubbo freight line and a portion of the local alternative alignment option. Gilgandra Shire Council is supportive of Inland Rail.

## Background

The Gilgandra Shire lies in the N2N section of Inland Rail.

The original N2N corridor was selected in the *2010 Inland Rail Alignment Study*. This corridor was then taken forward by ARTC as part of the *2015 Inland Rail Programme Business Case*.

In 2016 ARTC consulted with local councils, farmer representatives and community, which resulted in other route options being put forward. These options were reviewed by ARTC internally in Oct 2016, which led to further consultation, investigation and feedback to narrow down options.

ARTC held a multi-criteria analysis workshop on the shortlisted options in May 2017 and will soon report to the Minister for Infrastructure and Transport with a recommended route.

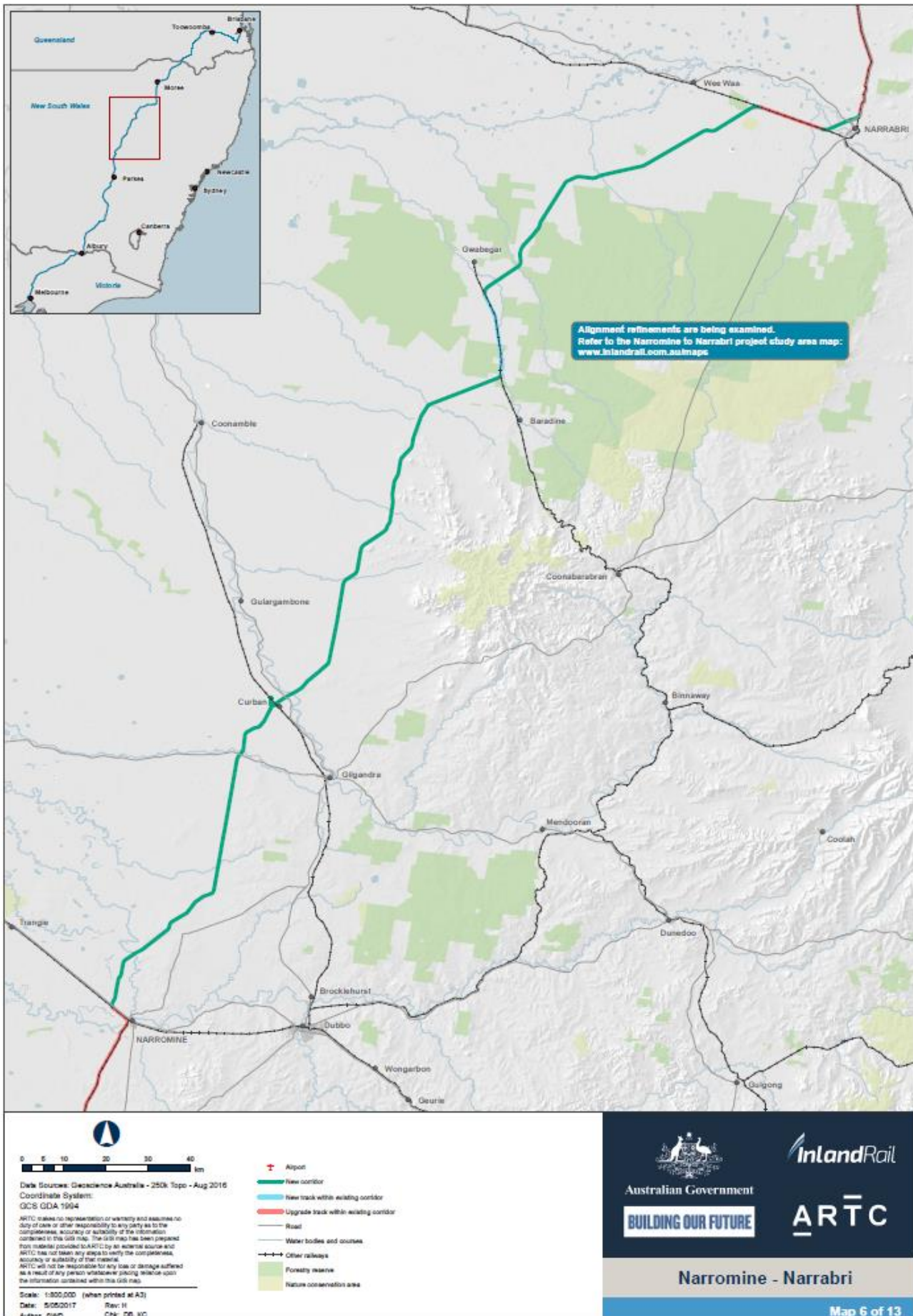
## Attachments

[Attachment A](#) - ARTC's Narromine to Narrabri Project - Base Case Map.

[Attachment B](#) - ARTC's Burroway to Curban Study Map

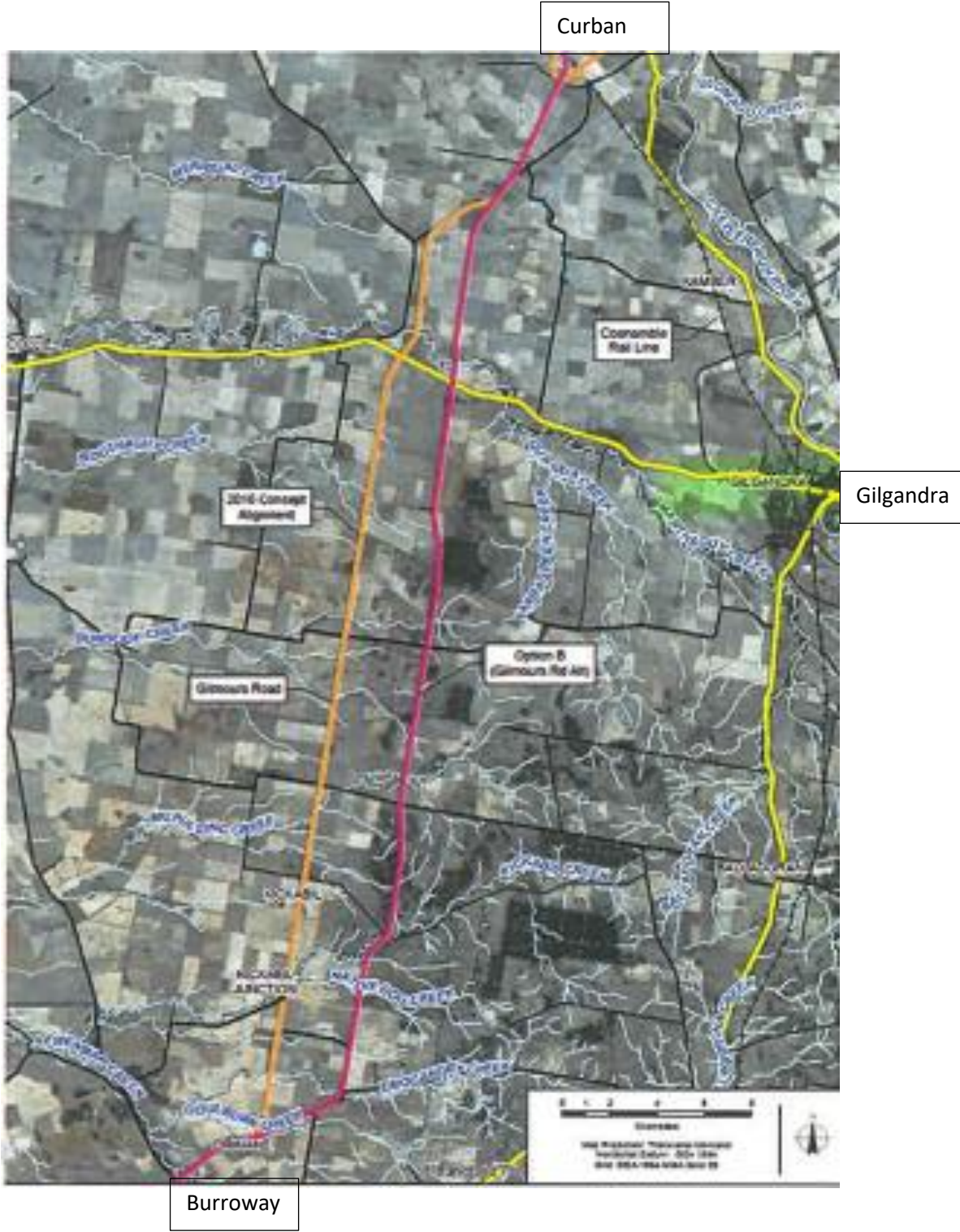
[Attachment C](#) - ARTC's Curban to Mt Tenandra Study Map

Narromine to Narrabri Section Map



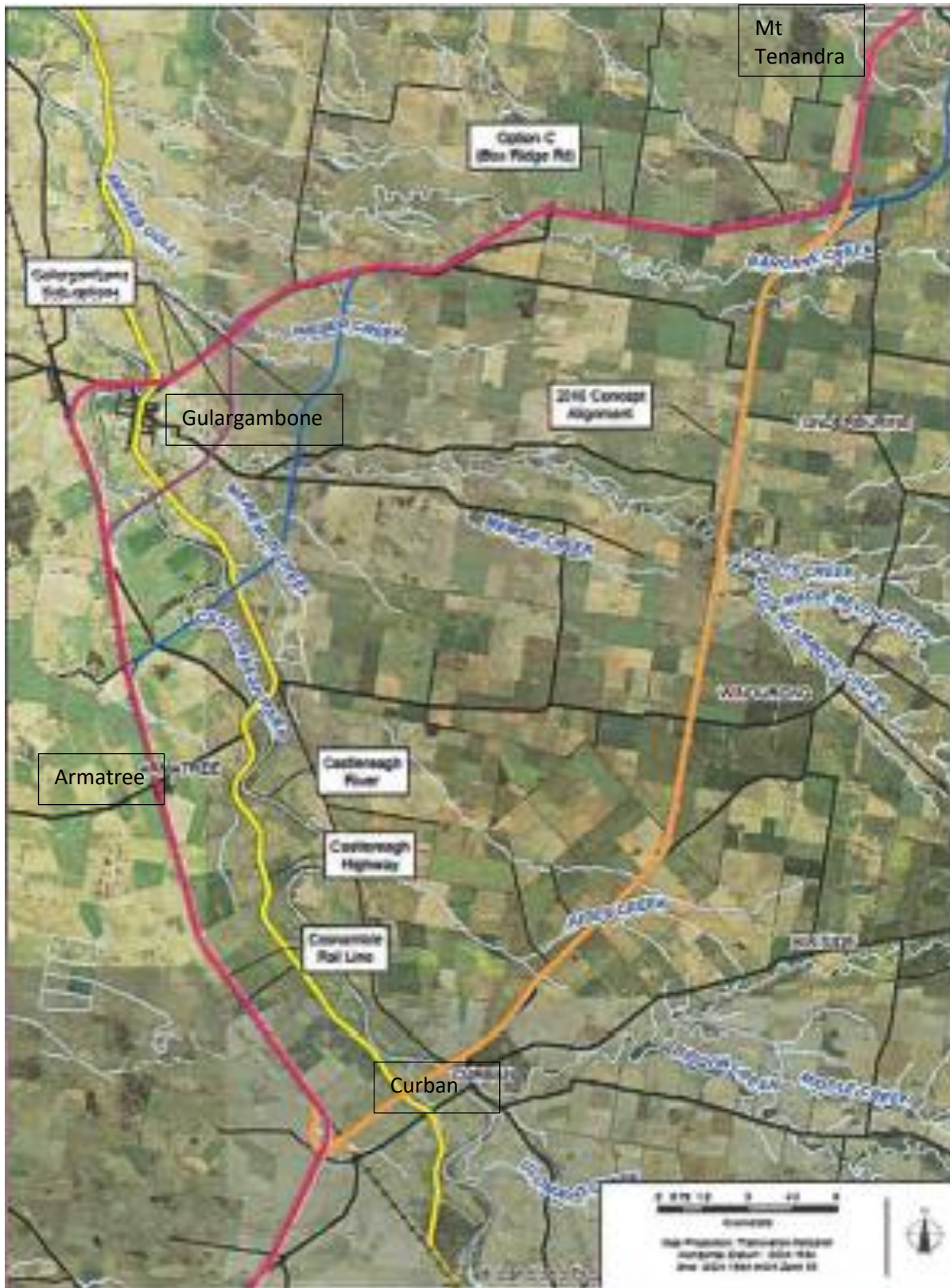


ARTC's Burroway to Curban Study Map



- Base Case Alignment
- Alternative Alignment Option

Curban to Mt Tenandra Study Map



- Base Case Alignment
- Alternative Alignment Option